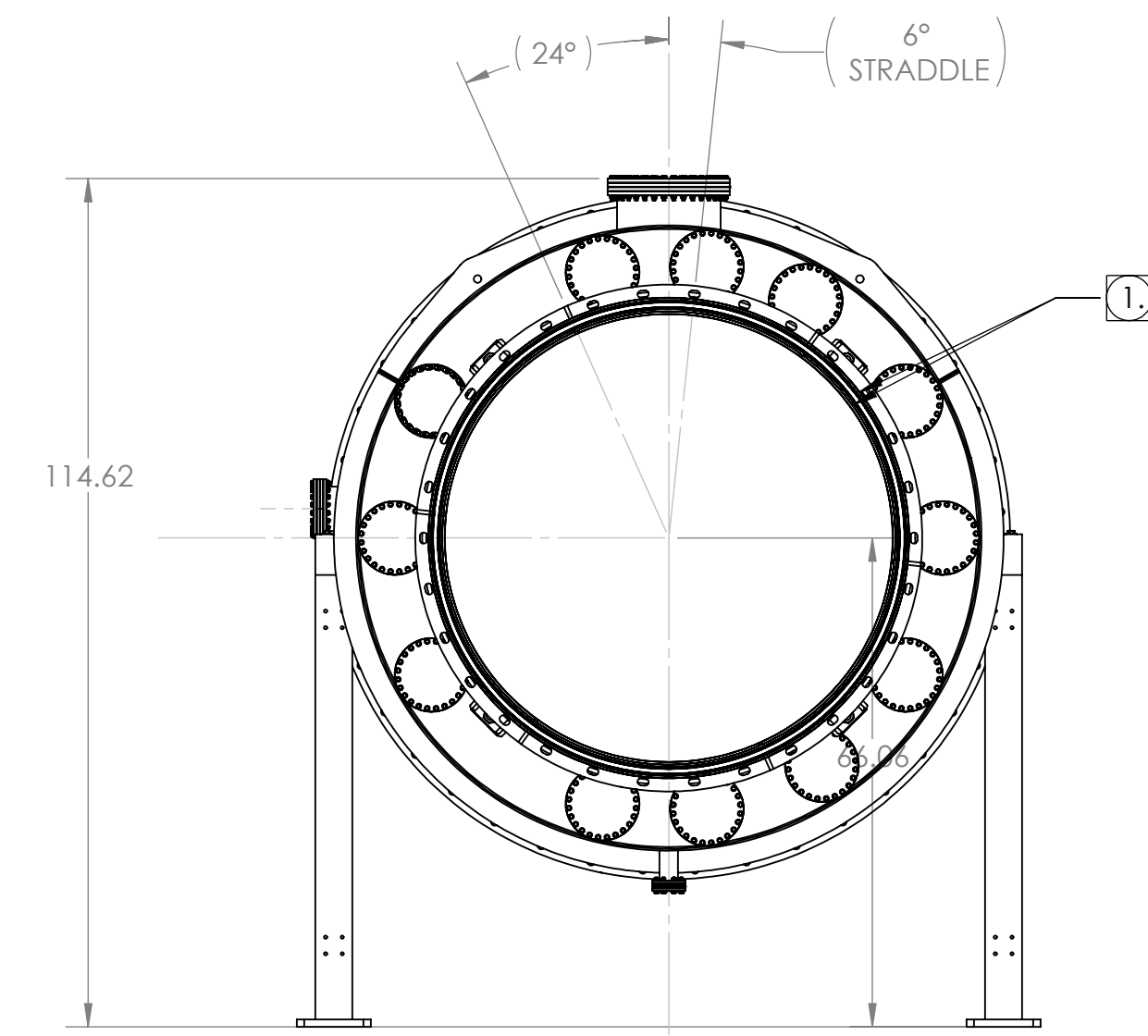
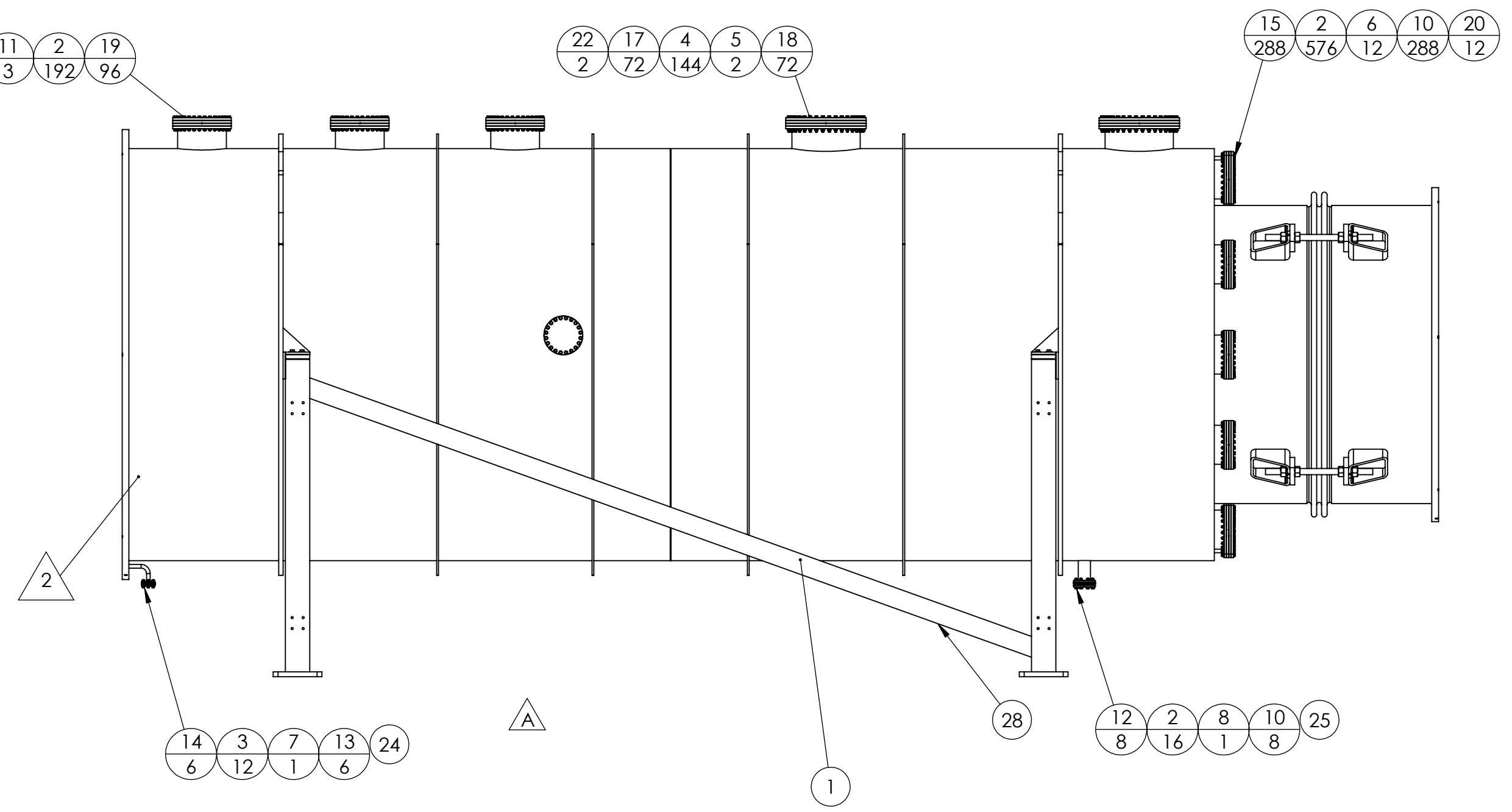
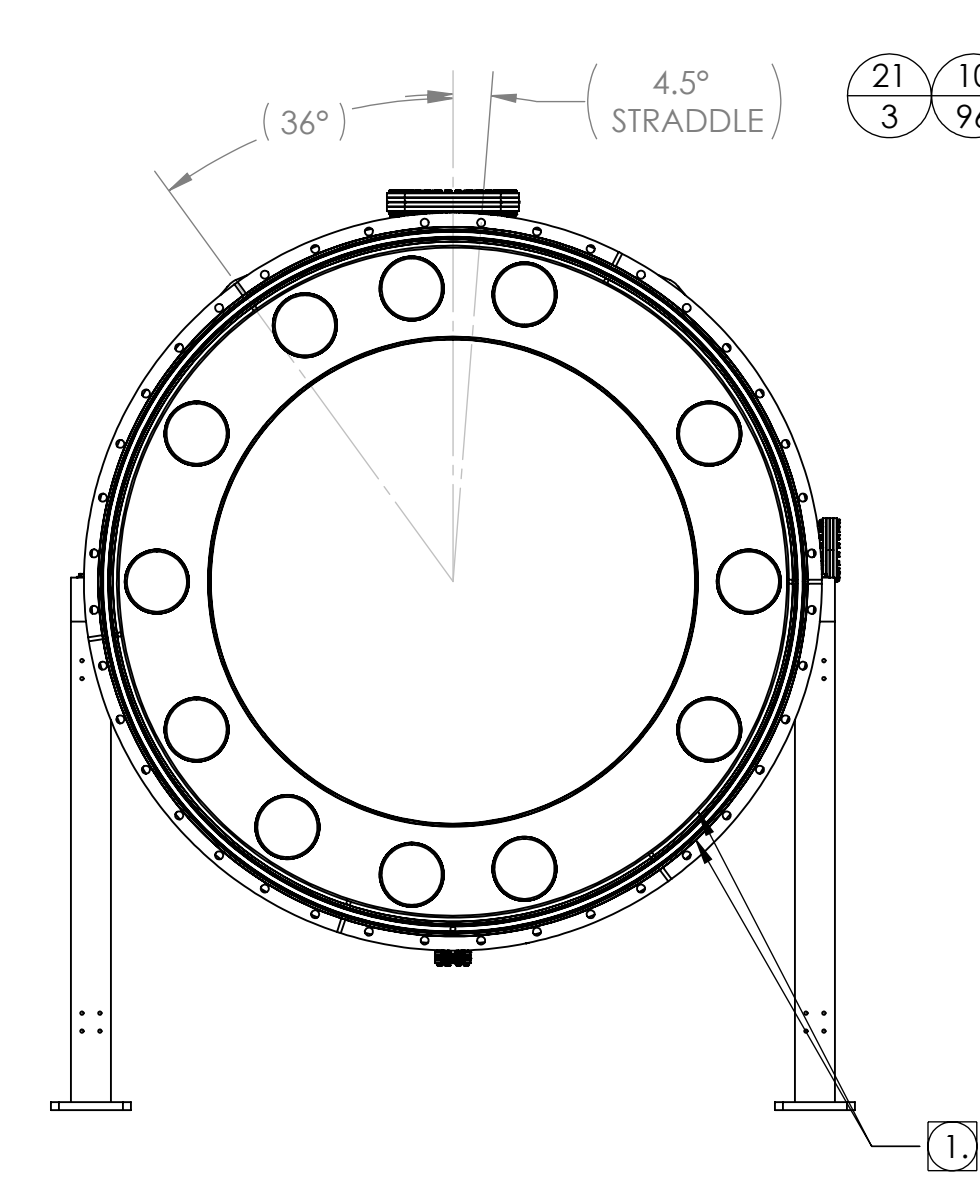
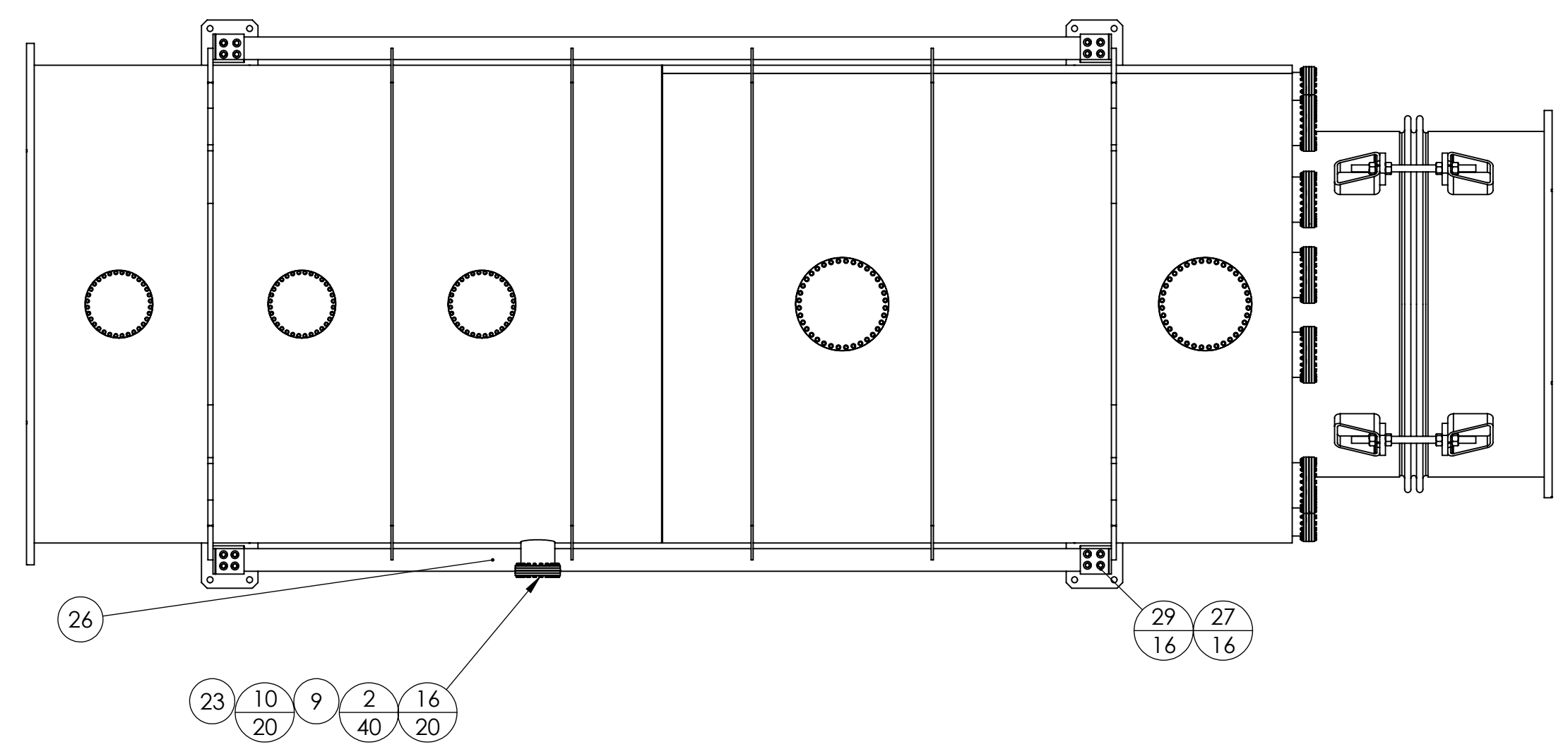


REVISIONS				
ZONE	REV.	DESCRIPTION	DATE	APPROVED
	A	REVISED STAND DESIGN, BOM	7/29/2010	MKM2
	B	REVISED HARDWARE: RELEASED TO PRODUCTION	8/24/2010	MKM2



ITEM NO.	PART NUMBER	DESCRIPTION	QTY.
1	114200-03WS	FINAL WELDMENT, MCB TUBE	1
2	F0500000Z	WASHER, 5/16 NOM ID, 0.065 THK, Zn COATED	824
3	F0400000Z	WASHER, 1/4 NOM ID, 0.065 THK, Zn COATED	12
4	F0600000Z	WASHER, 3/8 NOM ID, 0.065 THK, Zn COATED	144
5	1650-000N	(NORCAL) BLANK, CF, 16.50 OD	2
6	1000-000N	(NORCAL) BLANK, CF, 10" OD	12
7	275-000N	(NORCAL) BLANK, CF, 2.75" OD	1
8	450-000N	(NORCAL) BLANK, CF 4.50" OD	1
9	800-000N	(NORCAL) BLANK, CF, 8" OD	1
10	G05F0000Z	HEX NUT, 5/16-24, Zn COATED	412
11	1200-000N	(NORCAL) BLANK, CF, 12" OD	3
12	C05F0300Z	HHCS, 5/16-24, 1.88 LG, Zn COATED	8
13	G04F0000Z	HEX NUT, 1/4-28, Zn COATED	6
14	C04F0240Z	HHCS, 1/4-28, 1.50 LG, Zn COATED	6
15	C05F0400Z	HHCS, 5/16-24, 2.50 LG, Zn COATED	288
16	C05F0360Z	HHCS, 5/16-24, 2.25 LG, Zn COATED	20
17	G06F0000Z	HEX NUT, 3/8-24, Zn COATED	72
18	C06F0480Z	HHCS, 3/8-24, 3.00 LG, Zn COATED	72
19	C05F0440Z	HHCS, 5/16-24, 2.75 LG, Zn COATED	96
20	G-1000	(NORCAL) GASKET, COPPER, 10" CF	12
21	G-1200	(NORCAL) GASKET, COPPER, 12" CF	3
22	G-1650	(NORCAL) GASKET, COPPER, 16.50" CF	2
23	G-800	(NORCAL) GASKET, COPPER, 8" CF	1
24	G-275	(NORCAL) GASKET, COPPER, 2.75" CF	1
25	G-450	(NORCAL) GASKET, COPPER, 4.5" CF	1
26	114237-00WM	WELDMENT, MCB TUBE STAND	1
27	C08C0320Z	HHCS, 1/2-13, 2.00 LG, Zn COATED	16
28	114237-01WM	WELDMENT, MCB TUBE STAND	1
29	91525A145	(McM) WASHER, FENDER, 1/2 NOM ID, 1.5" OD	16

NOTES:

- 1. VACUUM SEALING SURFACE
- 2. SCRIBE THE FOLLOWING ON THE INDICATED SURFACE:
  - a. LIGO PART NUMBER,
  - b. SERIAL NUMBER,
  - c. GNB PART NUMBER
- 2. CLEAN PER LIGO SPECIFICATION E0900403
- 3. BAKEOUT PER LIGO SPECIFICATION E0900407
- 4. LEAK CHECK PER LIGO SPECIFICATION E0900404
- 5. KEEP FREE OF CONTAMINATION. ANY CONTAMINATION MUST BE REMOVED WITH A CO2 SPRAY IMMEDIATELY.
- 6. VERIFY CLEANLINESS PER PROCEDURE QP1750-A3
- 7. AFTER CLEANING, LEAVE ALL CF BLANKS IN PLACE, SHIPPING COVERS OVER MAIN FLANGES, AND BELLOWS TIE RODS IN PLACE AT ALL TIMES, UNLESS OTHERWISE NECESSARY.
- 8. ALL CONFLAT FLANGES ARE NON-ROTATABLE WITH THRU HOLES.

TORQUE TABLE		
ITEM	TORQUE VALUE	UNITS
14	110	IN-LB
12, 15, 16, 19	190	IN-LB
18, 27	345	IN-LB

MATERIAL: AISI 304/AISI 304L DUAL CERT PER SA240  
 UNLESS OTHERWISE SPECIFIED: WEIGHT: 8986.80 #  
 DIMENSIONS ARE IN INCHES: FINISH: 125  
 TOLERANCES: ANGULAR: ±10°/30°  
 XXX ±.005 UNFINISHED RADII: R.015  
 BREAK EDGES: .010x45° REMOVE ALL BURRS  
 // □ ⊥ WITHIN .03

APPROVALS: DATE: 6/9/10  
 DRAFTER: MKM2  
 CHECKER: RW  
 ENGINEER: MKM2

GNB CORPORATION  
 SCIENTIFIC AND INDUSTRIAL EQUIPMENT  
 3200 DWIGHT RD. SUITE #100  
 ELK GROVE, CA 95758  
 916-395-3003 FAX: 916-395-3363  
 www.gnbolives.com

TITLE: ASSEMBLY, TUBE, MCB4 WAMCB#4  
 DWG. NO. 114199-03S  
 SCALE: 1:24 SHEET 1 OF 1

DO NOT SCALE DRAWING  
 REV B