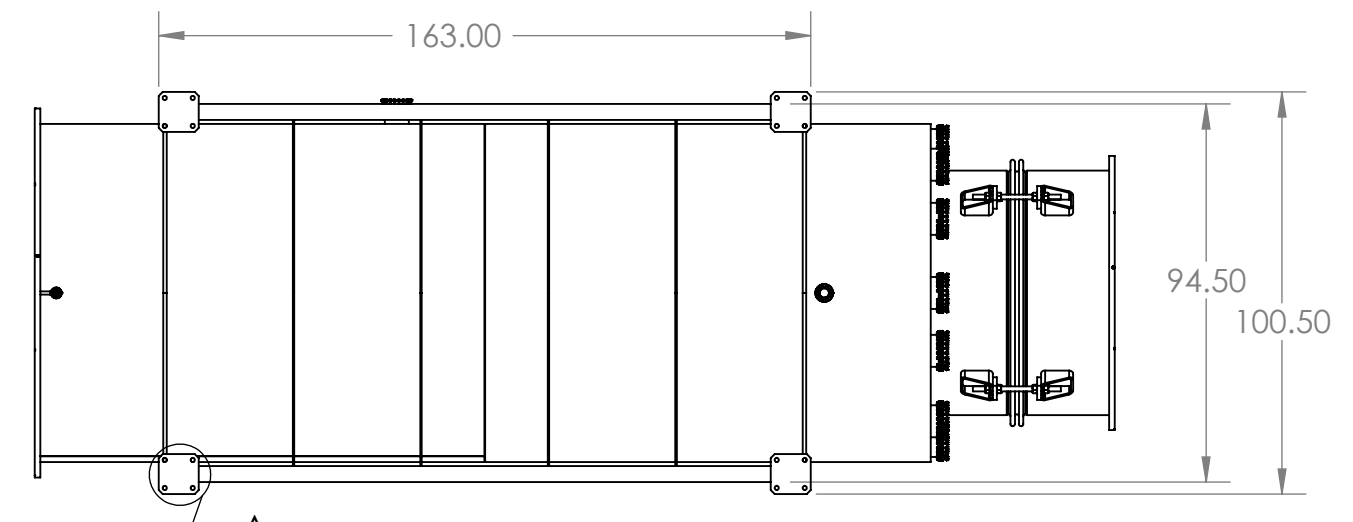
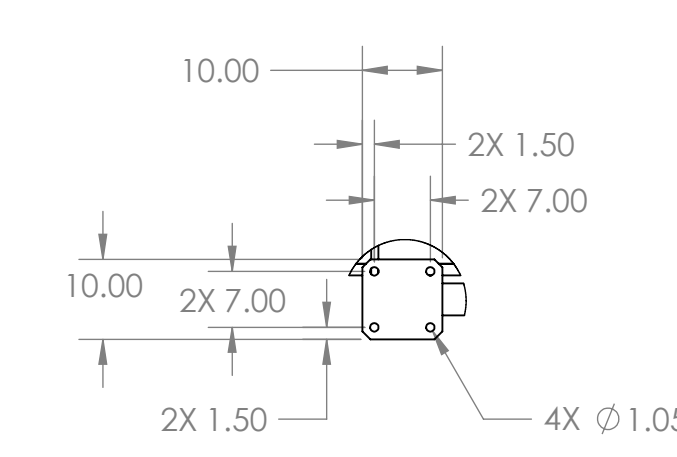
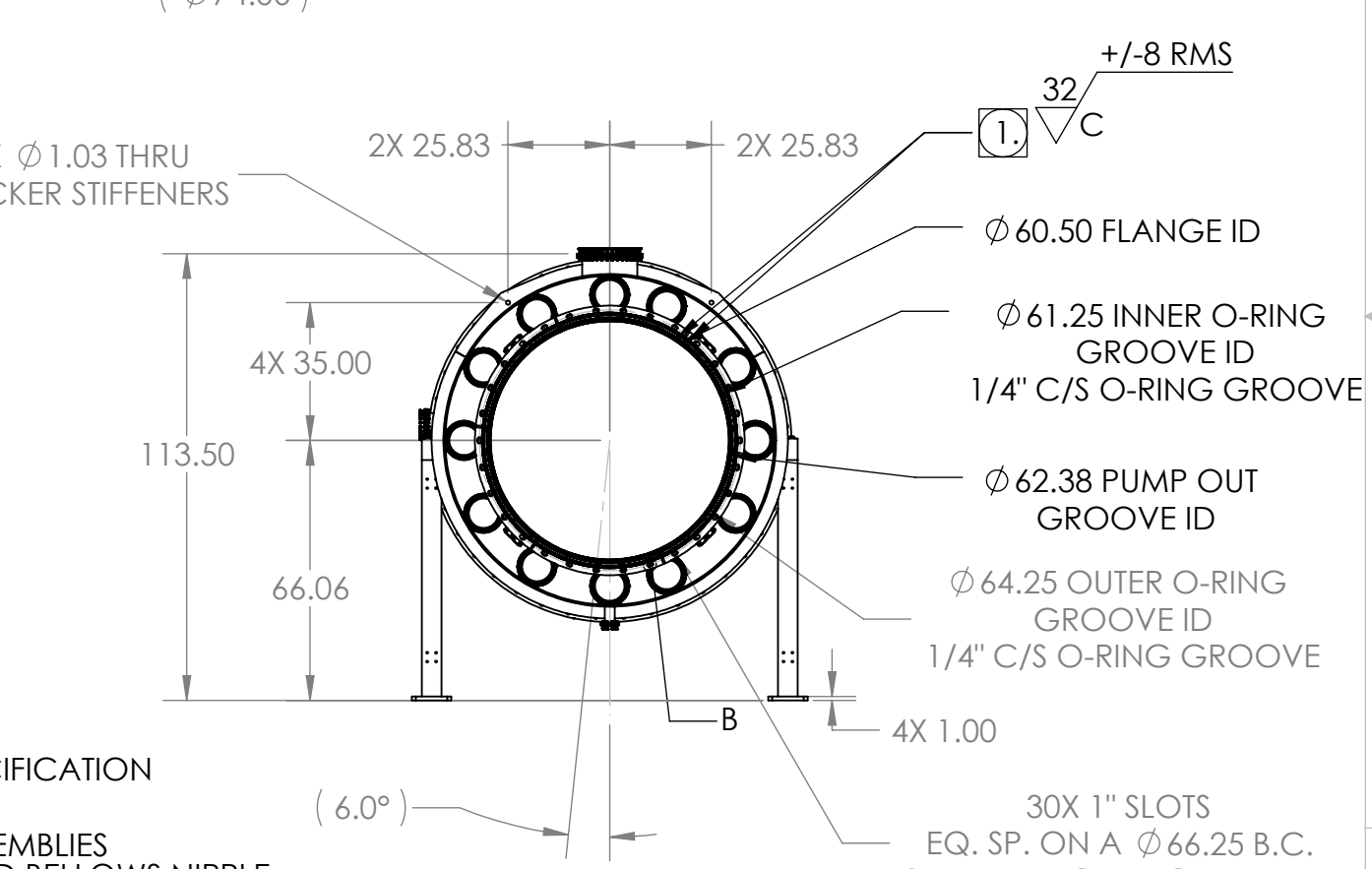
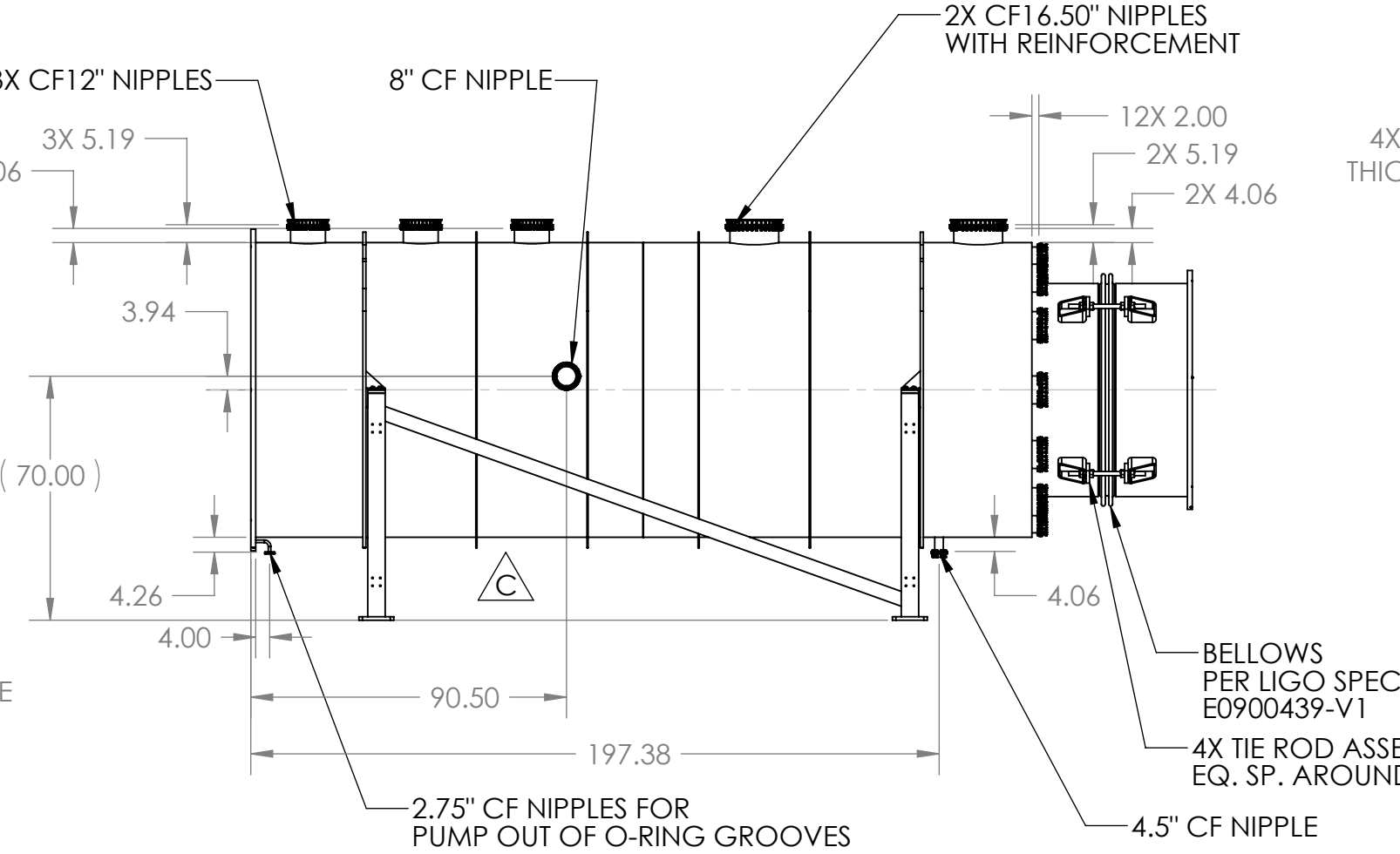
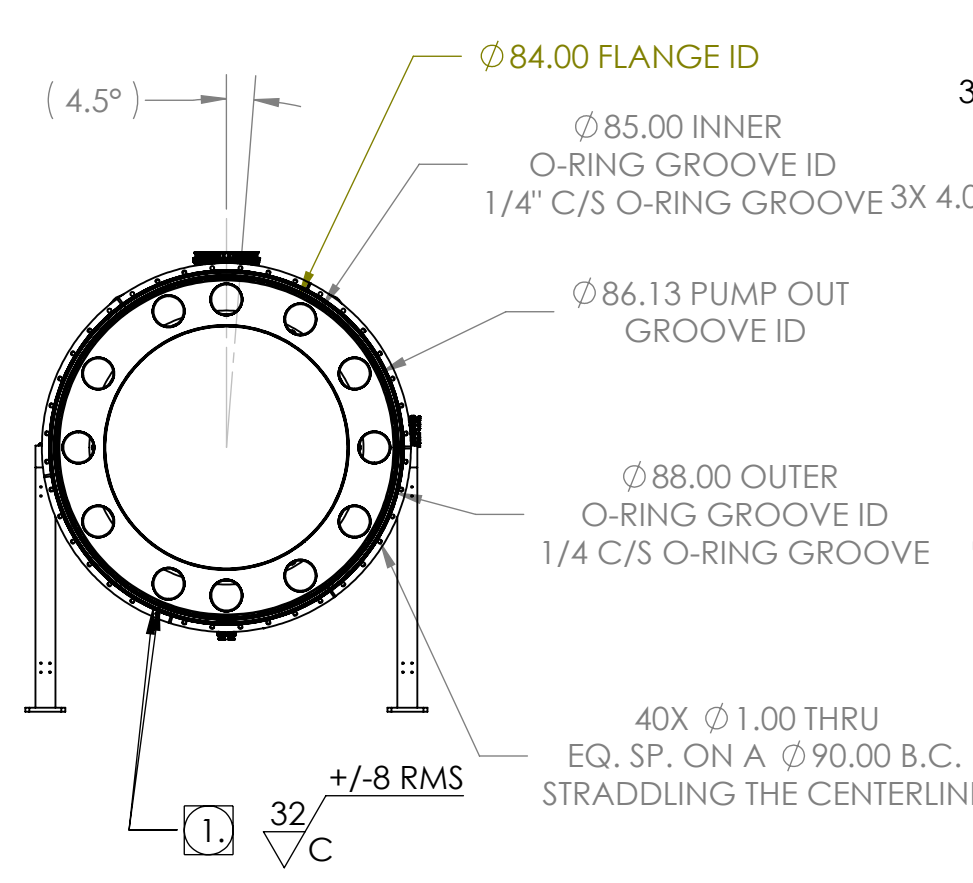
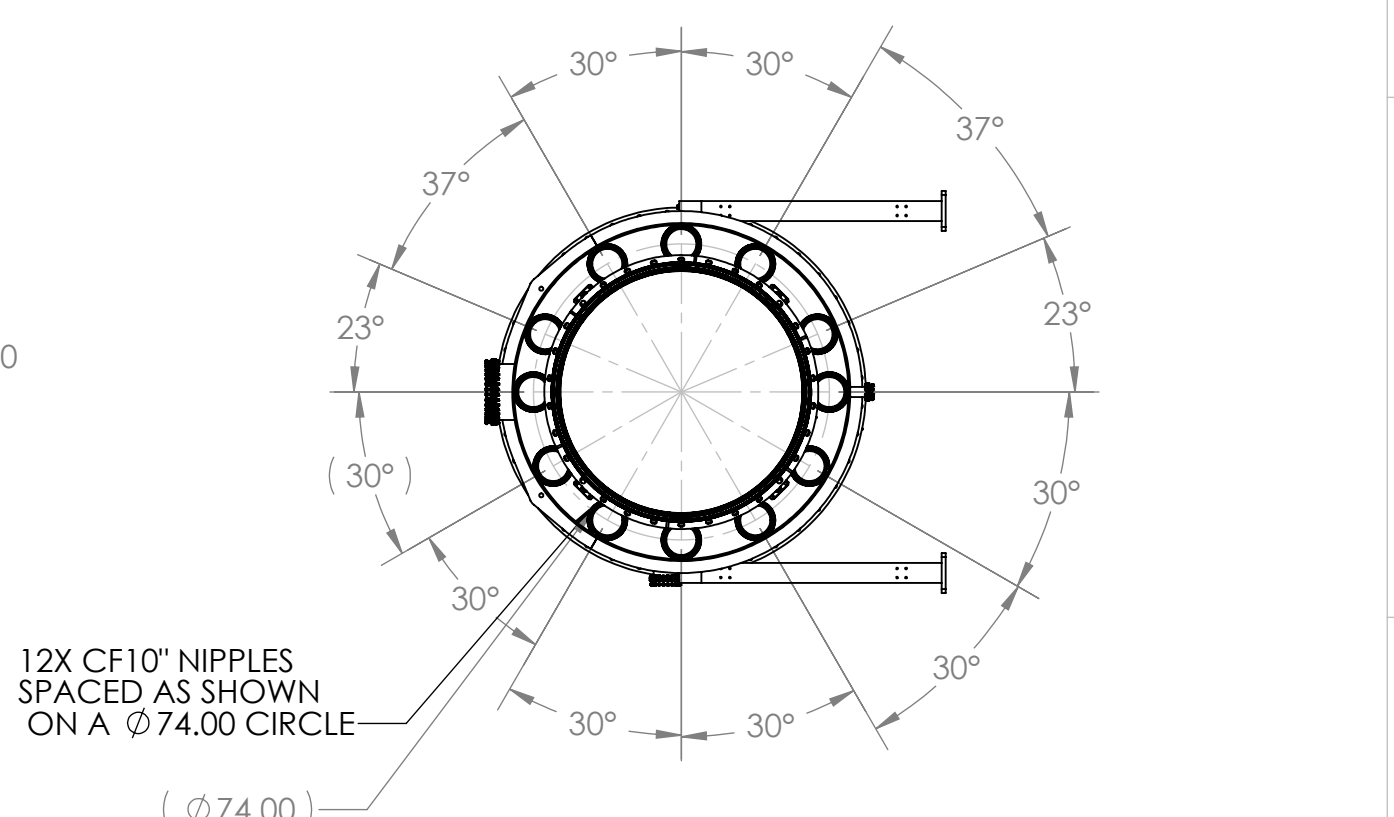
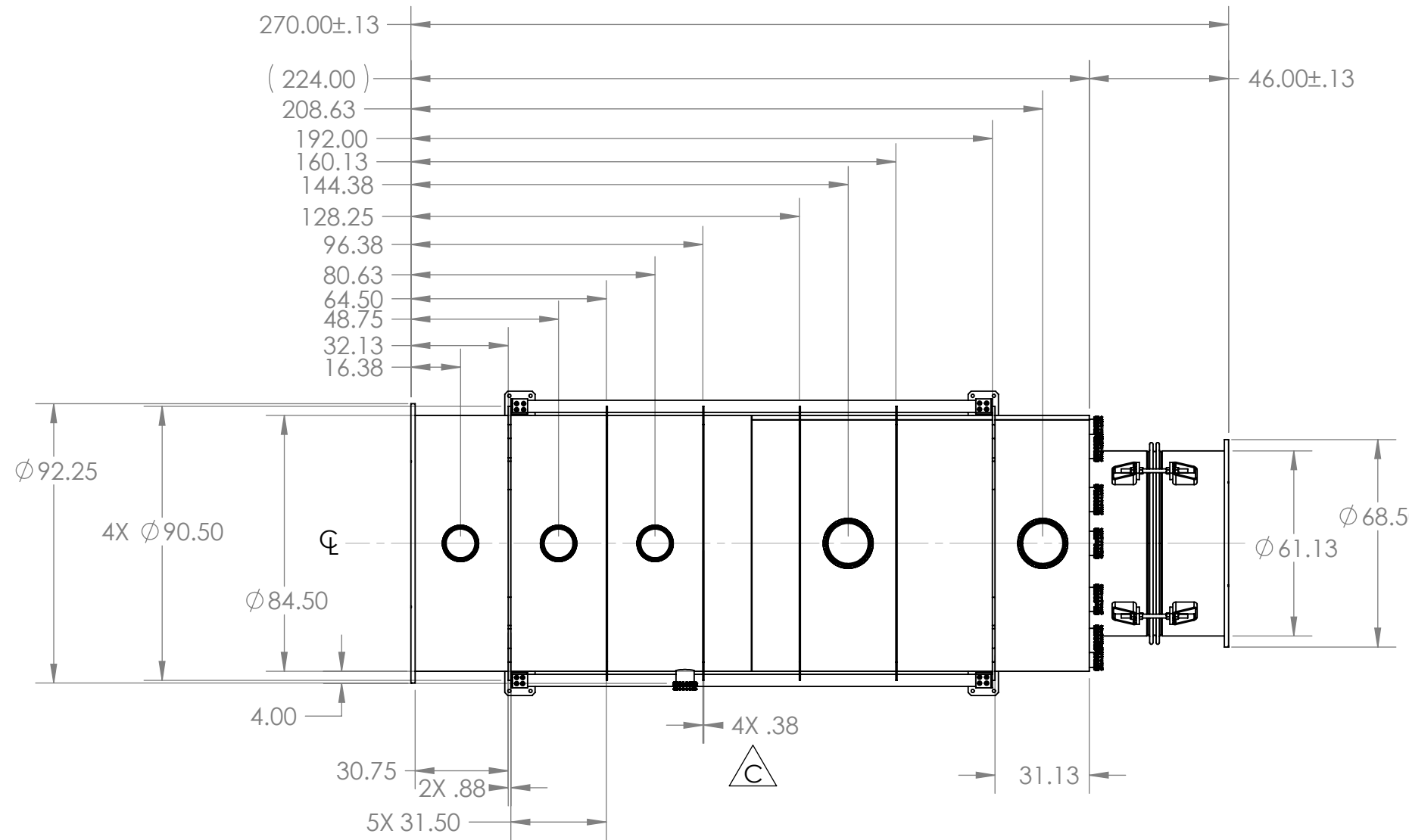


PROPRIETARY AND CONFIDENTIAL
 DRAWING IS THE SOLE PROPERTY OF
 THE GNB CORPORATION. ANY
 REPRODUCTION IN PART OR AS A WHOLE
 WITHOUT THE WRITTEN PERMISSION OF
 THE GNB CORPORATION IS PROHIBITED.

REVISIONS				
ZONE	REV.	DESCRIPTION	DATE	APPROVED
	A	REVISED MODEL TO MATCH CONSTRUCTION MODELS	6/9/10	MKM2
	B	REVISED TITLE BLOCK, GD&T TOLERANCE WAS .010, NOW .03; REMOVED 2.75" OF PUMP OUT PORT	6/24/10	MKM2
	C	ADDED TWO MORE STIFFENERS, REVISED STAND TO MATCH CLARIFIED USE CONDITIONS.	7/2/2010	MKM2
	D	RELEASED TO PRODUCTION	8/24/2010	MKM2



MATERIAL: AISI 304/ AISI 304L DUAL CERT PER SA240
 UNLESS OTHERWISE SPECIFIED: DIMENSIONS ARE IN INCHES
 TOLERANCES: FINISH
 ANGULAR: ± 1°
 .XX ± .04
 .XXX ± .005
 UNSPECIFIED FILLETS: R.015
 BREAK EDGES .010x45°
 REMOVE ALL BURRS
 // .1 WITHIN .03

WEIGHT: 8988.37#

APPROVALS	DATE
DRAFTER MKM2	6/9/10
CHECKER RW	6/15/10
ENGINEER MKM2	6/9/10

GNB CORPORATION
 SCIENTIFIC AND INDUSTRIAL EQUIPMENT
 3200 DWIGHT RD. SUITE 100
 ELK GROVE, CA 95758
 916-395-3003 FAX: 916-395-3363
 www.gnbvalves.com

TITLE: OUTLINE, TUBE, MC-B #2
 WAMCB2, LAMCB2

THIRD ANGLE PROJECTION

DO NOT SCALE DRAWING	C	DWG. NO. 114146-01	REV D
SCALE: 1:48	SHEET 1 OF 1		

NOTES:
 1. VACUUM SEALING SURFACE
 2. ALL CONFLAT FLANGES ARE NON-ROTATABLE AND WITH THRU HOLES.