

NOTES CONTINUED:

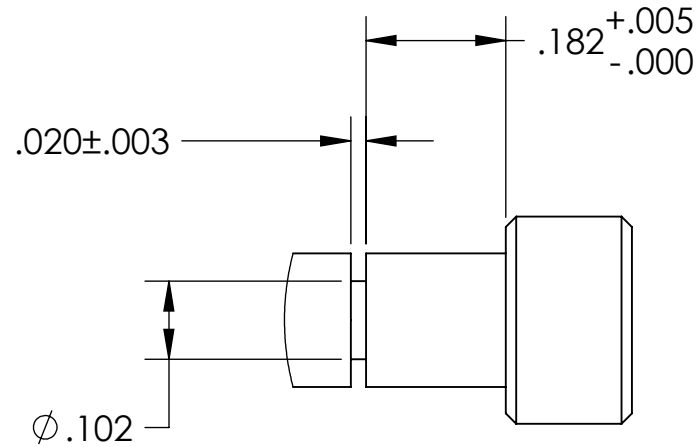
⑤ SCRIBE, ENGRAVE, OR MECHANICALLY STAMP (NO DYES OR INKS) A UNIQUE THREE DIGIT SERIAL NUMBER & REVISION NUMBER ON EACH PART. SERIAL NUMBERS START AT 001 FOR THE FIRST ARTICLE AND PROCEED CONSECUTIVELY. BAG AND TAG PARTS WITH THEIR DRAWING PART NUMBER, REVISION, VARIANT OR "TYPE" (IF APPLICABLE), AND QUANTITY. IF PARTS ARE TOO SMALL TO SCRIBE, BAGGING AND TAGGING ALONE IS SUFFICIENT.  
 EXAMPLE (PART): 001-v1  
 EXAMPLE (TAG): DXXXXXX-VY, TYPE-XX, QTY: TBD

REV.	DATE	DCN #	DRAWING TREE #
v1	08/12/2010	E1000318	-
-	-	-	-
-	-	-	-

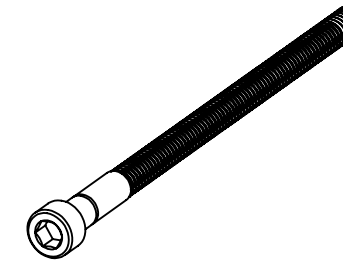
D

6. BAG AND TAG.

D



DETAIL B  
SCALE 4 : 1

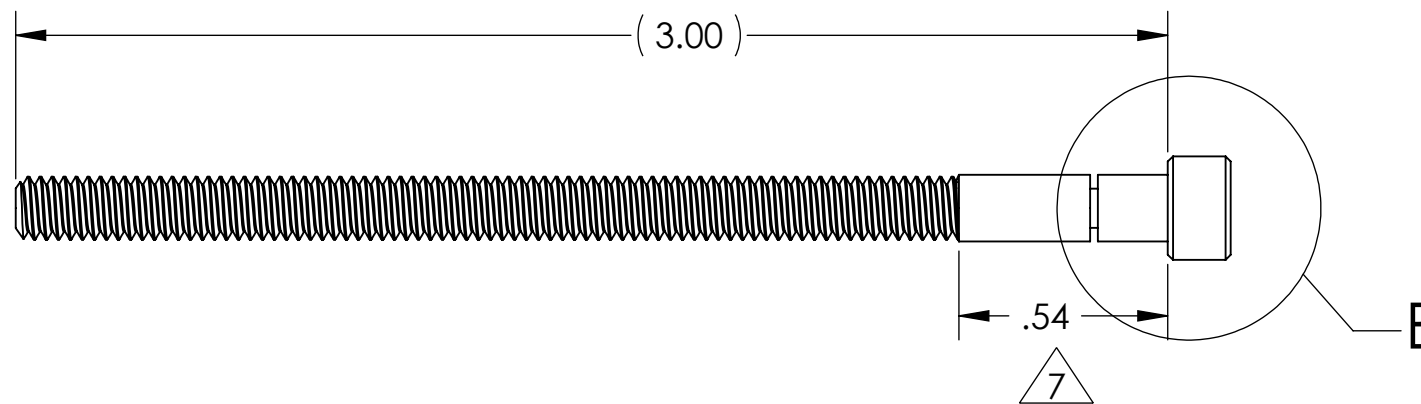


C

C

B

B



A

A

 CHASE FULL THREAD TO DIMENSION SHOWN.

NOTES AND TOLERANCES: (UNLESS OTHERWISE SPECIFIED)				CALIFORNIA INSTITUTE OF TECHNOLOGY MASSACHUSETTS INSTITUTE OF TECHNOLOGY		PART NAME	
DIMENSIONS ARE IN INCHES TOLERANCES: .XX ± .01 .XXX ± .005 ANGULAR ± 1.0°				1. INTERPRET DRAWING PER ASME Y14.5-1994. 2. REMOVE ALL SHARP EDGES, R.02 MIN. 3. DO NOT SCALE FROM DRAWING. 4. ALL MACHINING FLUIDS MUST BE FULLY SYNTHETIC, FULLY WATER SOLUBLE AND FREE OF SULFUR, SILICONE, AND CHLORINE.		<b>qLIGO TMS FOCUS SCREW</b>	
MATERIAL 92196A209, MCMMASTER		FINISH STOCK inch		SYSTEM LIGO		SUB-SYSTEM AOS	
NEXT ASSY D1001600				DESIGNER K. MAILAND 07/20/2010		SIZE DWG. NO. B D1001973	
				DRAFTER M. MILLER 08/06/2010		REV. v1	
				CHECKER		SCALE: 1:1 PROJECTION:  SHEET 1 OF 1	
				APPROVAL			