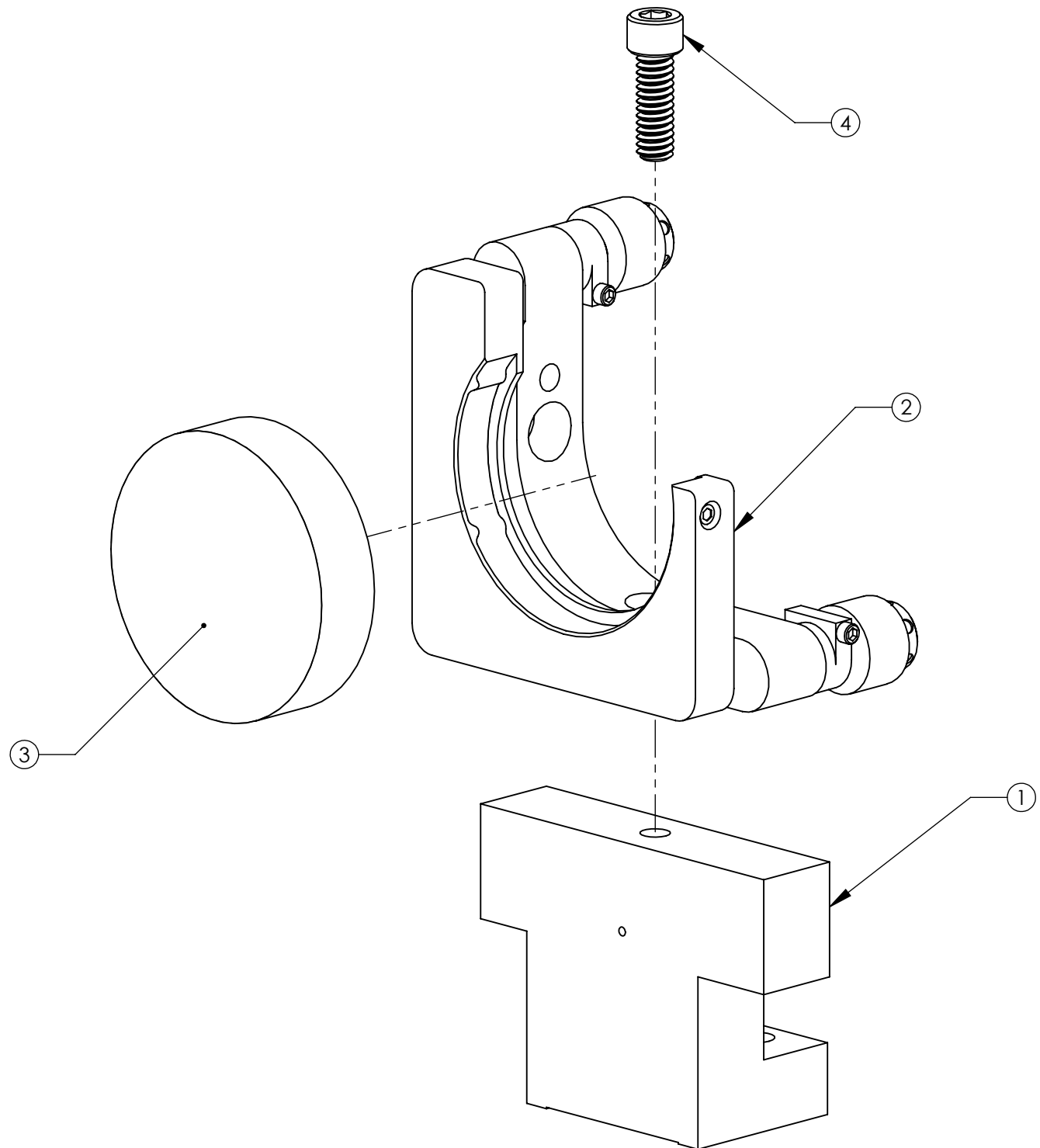


D1001967_d1lgo_aos_d1001964_ixm200_c2 Mirror Assy, PART PDM REV: X-015, DRAWING PDM REV: X-007

REV.	DATE	DCN #	DRAWING TREE #
v1	08 OCT 2010	E1000563	



ITEM NO.	PART NUMBER	DESCRIPTION	MATERIAL	REQ	SPARE	TOTAL
4	92200A540	SCREW, SHC, 1/4-20 x 3/4, MS16995-50, MC #92200A540	300 SSSL	1		1
3		IXM200_C2 MIRROR	TRANSPARENT GLASS	1		1
2	IXM200 C2 Mirror Mount	IXM200_C2_MIRROR MOUNT	6061-T6 Al	1		1
1	D1001968	IXM200_C2 MIRROR MOUNT	6061-T6 Al	1		1

PARTS LIST

<p>NOTES AND TOLERANCES: (UNLESS OTHERWISE SPECIFIED)</p> <p>1. INTERPRET DRAWING PER ASME Y14.5-1994. 2. REMOVE ALL SHARP EDGES, R.02 MIN. 3. DO NOT SCALE FROM DRAWING. 4. ALL MACHINING FLUIDS MUST BE FULLY SYNTHETIC, FULLY WATER SOLUBLE AND FREE OF SULFUR, SILICONE, AND CHLORINE.</p>		<p>LIGO CALIFORNIA INSTITUTE OF TECHNOLOGY MASSACHUSETTS INSTITUTE OF TECHNOLOGY</p>		<p>PART NAME IXM200_C2 MIRROR ASSY</p>	
<p>DIMENSIONS ARE IN TOLERANCES: .XX ± .02 .XXX ± .010 ANGULAR ± 0.5°</p>	<p>MATERIAL N/A</p>	<p>FINISH N/A μinch</p>	<p>NEXT ASSY D0900623</p>	<p>DESIGNER MRUIZ</p>	<p>DATE 03 AUG 2010</p>
<p>SCALE: 1:1 PROJECTION: </p>				<p>SIZE DWG. NO. B D1001967</p>	<p>REV. v1</p>
<p>SHEET 1 OF 1</p>					