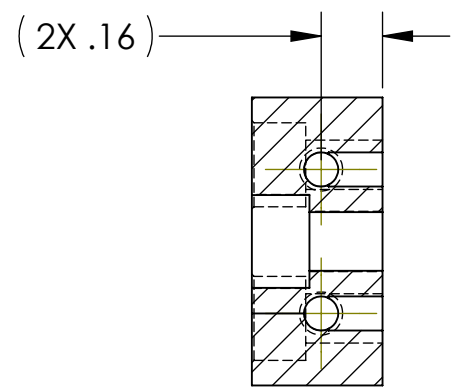
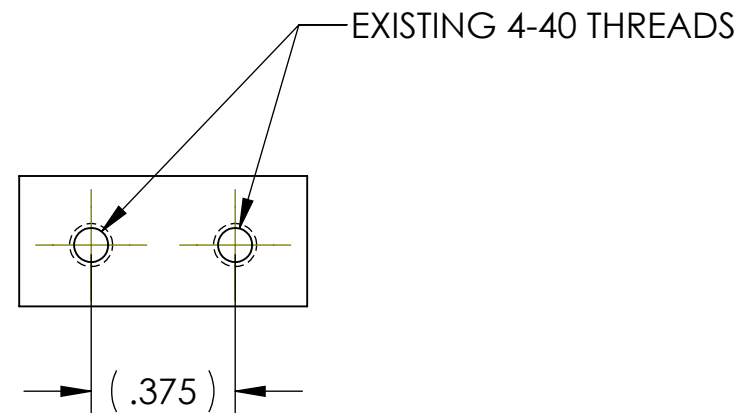
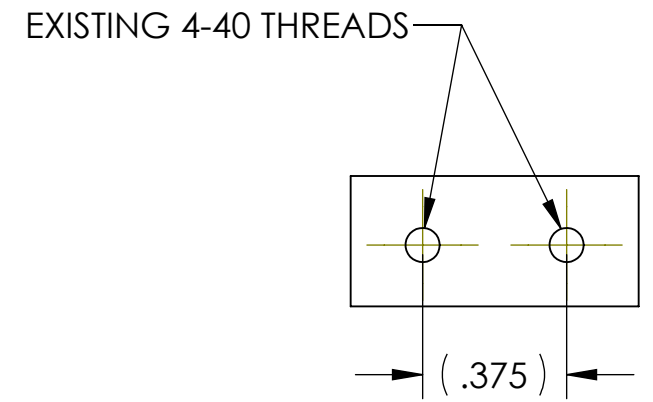
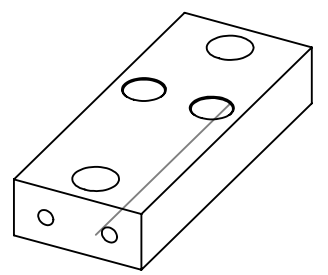
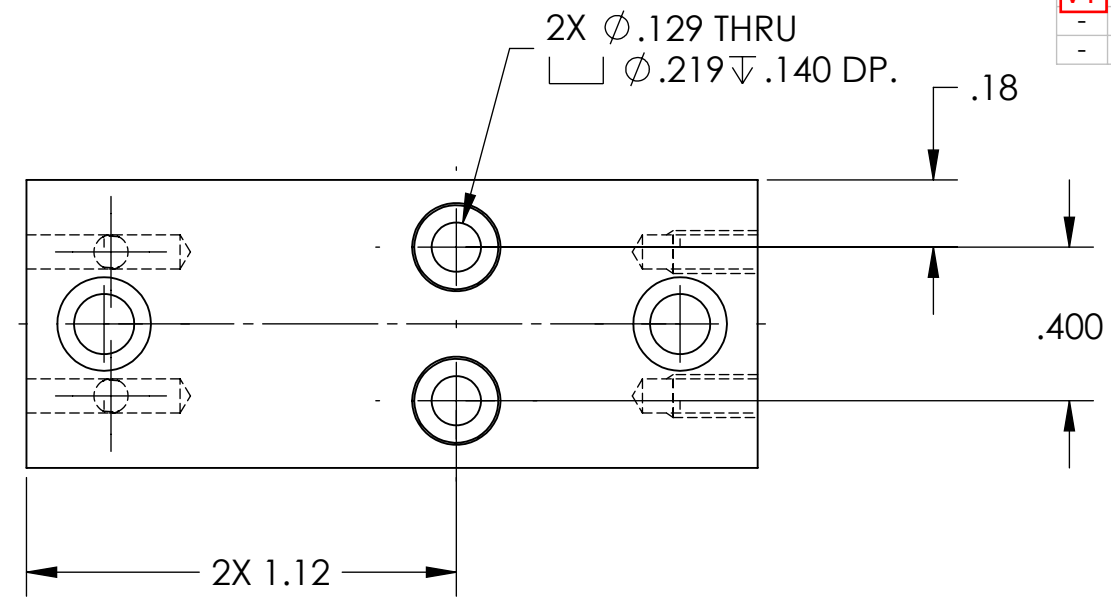
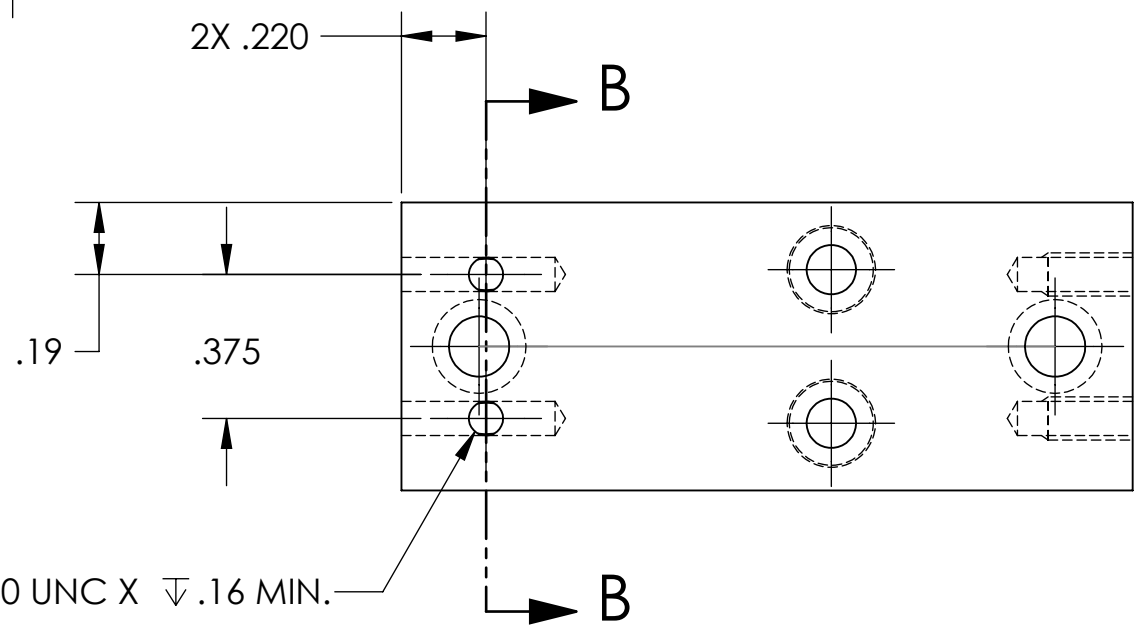


~~NOTES CONTINUED:
 5. SCRIBBLE, ENGRAVE, OR MECHANICALLY STAMP (IN
 DYES OR INKS) A UNIQUE THREE DIGIT SERIAL NUMBER &
 REVISION NUMBER ON EACH PART. SERIAL NUMBERS
 START AT 001 FOR THE FIRST ARTICLE AND PROCEED
 CONSECUTIVELY. BAG AND TAG PARTS WITH THEIR
 DRAWING PART NUMBER, REVISION, VARIANT OR "TYPE"
 (IF APPLICABLE), AND QUANTITY. IF PARTS ARE TOO
 SMALL TO SCRIBBLE, BAGGING AND TAGGING ALONE IS
 SUFFICIENT. (PART): 001-v1
 EXAMPLE (TAG): DXXXXXX-VY, TYPE-XX, QTY: 15~~

REV.	DATE	DCN #	DRAWING TREE #
v1	-	D1000318	-
-	-	-	-
-	-	-	-



SECTION B-B



6. REF: END PLATES NOT SHOWN.
 7. MODIFY DEL-TRON RS1-1 GUIDE.

8 .005 OVERSIZE THREAD.

NOTES AND TOLERANCES: (UNLESS OTHERWISE SPECIFIED)	
DIMENSIONS ARE IN INCHES	
TOLERANCES: .XX ±.01 .XXX ±.005 ANGULAR ± 0.1°	
1. INTERPRET DRAWING PER ASME Y14.5-1994. 2. REMOVE ALL SHARP EDGES, R.02 MIN. 3. DO NOT SCALE FROM DRAWING. 4. ALL MACHINING FLUIDS MUST BE FULLY SYNTHETIC, FULLY WATER SOLUBLE AND FREE OF SULFUR, SILICONE, AND CHLORINE.	
MATERIAL	FINISH
RS1-1	N/A µinch

CALIFORNIA INSTITUTE OF TECHNOLOGY MASSACHUSETTS INSTITUTE OF TECHNOLOGY		PART NAME	
SYSTEM		αLIGO TMS DEL-TRON-RS1-1-GUIDE	
LIGO	SUB-SYSTEM	DESIGNER	K. MAILAND 07/17/2010
NEXT ASSY	AOS	DRAFTER	M. MILLER 07/27/2010
D1001600		CHECKER	
		APPROVAL	
SCALE: 2:1		PROJECTION:	
SHEET 1 OF 1		SIZE DWG. NO.	B D1001948
		REV.	v1

D1001948 αLIGO TMS DEL-TRON-RS1-1 HOR. GUIDE, PART PDM REV: X-004, DRAWING PDM REV: X-011