

**NOTES CONTINUED:**  
 5. SCRIBE, ENGRAVE (A VIBRATORY TOOL MAY BE USED), LASER MARK OR MECHANICALLY STAMP (NO INKS OR DYES) DRAWING PART NUMBER, REVISION (AND VARIANT OR "TYPE" IF APPLICABLE) ON NOTED SURFACE OF PART FOLLOWED ON THE NEXT LINE WITH A THREE DIGIT SERIAL NUMBER. SERIAL NUMBERS START AT 001 FOR THE FIRST ARTICLE AND PROCEED CONSECUTIVELY. USE MINIMUM 0.12" HIGH CHARACTERS, UNLESS THE SIZE OF THE PART DICTATES SMALLER CHARACTERS. EXAMPLE: DXXXXXX-VY, TYPE-XX, S/N XXX

6. MASS: 0.539 KG [1.188 LB].

7. MACHINE ALL SURFACES TO REMOVE OXIDES AND MILL FINISH. USE OF ABRASIVE REMOVAL TECHNIQUES IS NOT ALLOWED.

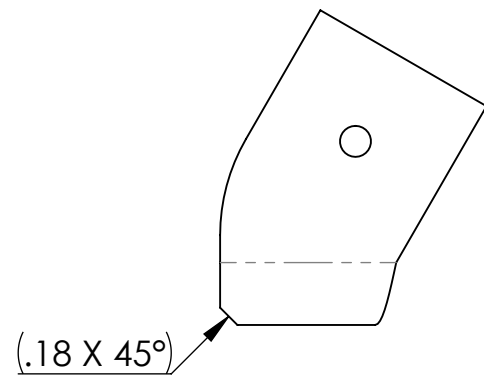
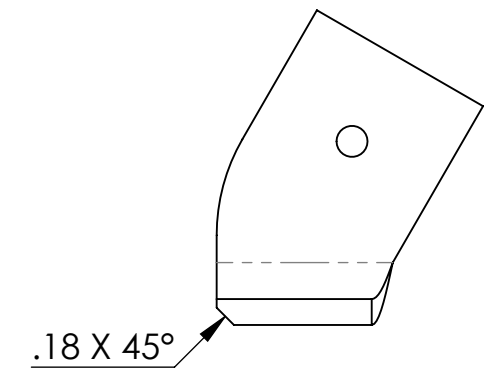
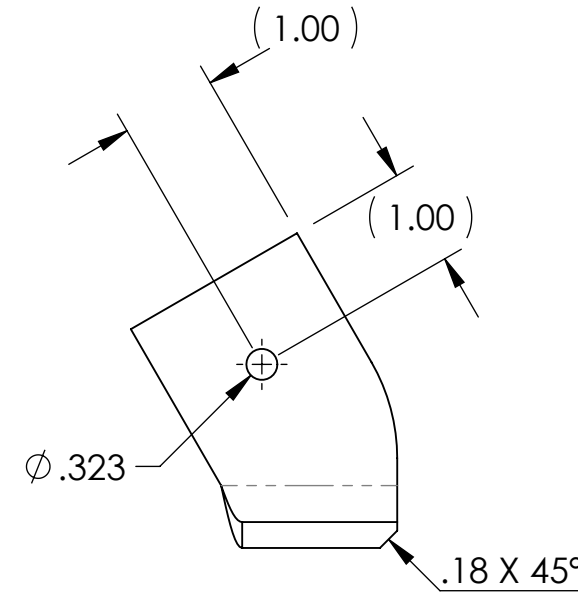
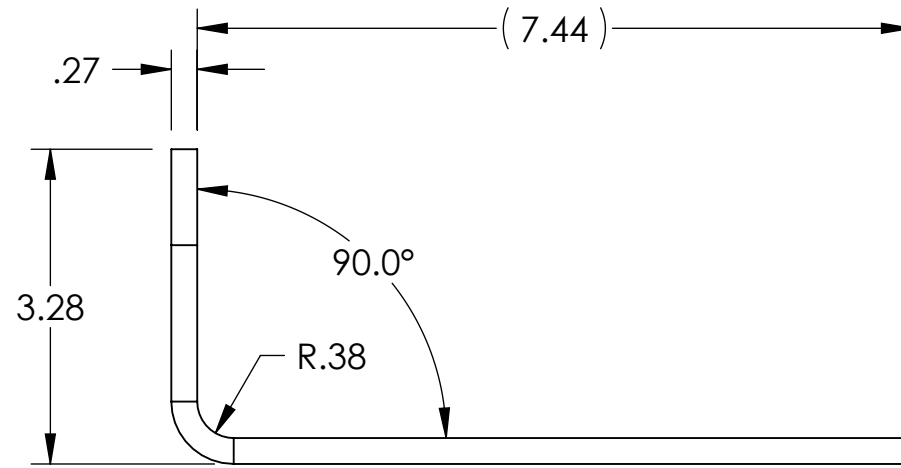
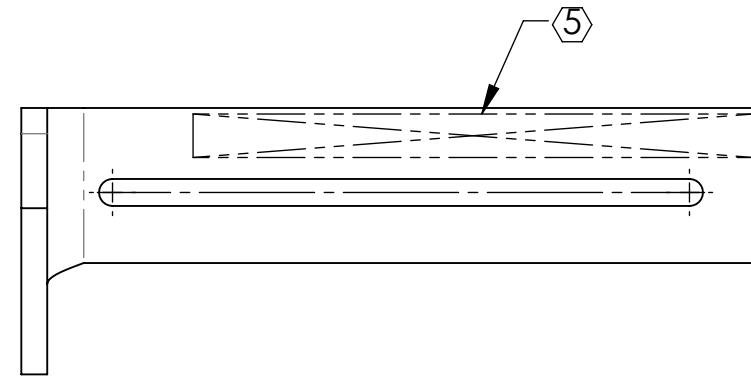
8. ALL PARTS SHALL BE MANUFACTURED IN ACCORDANCE WITH LIGO SPECIFICATION E0900364.

9. NO REPAIRS SHALL BE MADE UNLESS APPROVED IN ADVANCE, AND IN WRITING, BY LIGO LABORATORY. IN GENERAL WELD REPAIRS AND PRESS FIT INSERT REPAIRS ARE NEVER ACCEPTABLE; THE MATERIAL SHOULD BE MADE WITH VIRGIN MATERIAL. SPECIAL CIRCUMSTANCES CAN BE REVIEWED IF / WHEN BROUGHT TO THE ATTENTION OF LIGO CONTRACTING OFFICER'S REPRESENTATIVE (COTR) THROUGH A MATERIAL REVIEW BOARD (MRB) PROCESS, REFER TO LIGO-E0900364.

REV.	DATE	DCN #	DRAWING TREE #
v1	21 MAR 2011	E1000384	-
v2	07 MAR 2012	E1100351	-
v3	01 APR 2012	E1100345	-

**-02  
(LEFT HANDED)**

**-01  
(RIGHT HANDED)**



**-01 (RIGHT HANDED) SHOWN DETAILED  
 -02 (LEFT HANDED) BEND OPPOSITE**

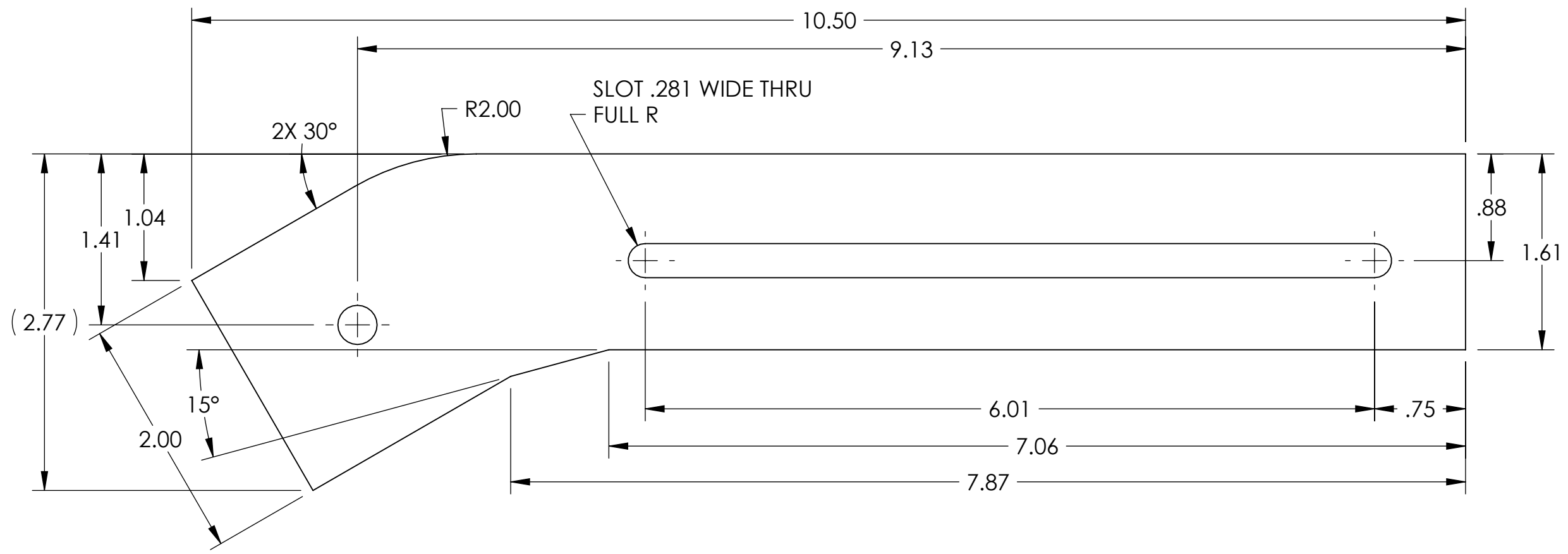
D1001929 aLIGO TMS SEISMIC SAFETY STOP CHAMBER BRACKET, PART PDM REV: X-042, DRAWING PDM REV: X-028

NOTES AND TOLERANCES: (UNLESS OTHERWISE SPECIFIED)	
DIMENSIONS ARE IN INCHES	
TOLERANCES: .XX ± .01 .XXX ± .005	
ANGULAR ± 1.0°	
1. INTERPRET DRAWING PER ASME Y14.5-1994. 2. REMOVE ALL SHARP EDGES, R.02 MIN. 3. DO NOT SCALE FROM DRAWING. 4. ALL MACHINING FLUIDS MUST BE FULLY SYNTHETIC, FULLY WATER SOLUBLE AND FREE OF SULFUR, SILICONE, AND CHLORINE.	
MATERIAL	304 SSSL
FINISH	63 μinch Ra

CALIFORNIA INSTITUTE OF TECHNOLOGY MASSACHUSETTS INSTITUTE OF TECHNOLOGY	
SYSTEM	ADVANCED LIGO
SUB-SYSTEM	AOS
NEXT ASSY	D1001781

PART NAME		aLIGO TMS SEISMIC SAFETY STOP CHAMBER BRACKET	
DESIGNER	K. MAILAND	29 JUL 2010	SIZE DWG. NO.
DRAFTER	M. MILLER	21 MAR 2011	B
CHECKER	SEE DCN		D1001929
APPROVAL	SEE DCN		REV. v3
SCALE: NONE	PROJECTION:		SHEET 1 OF 2

D1001929 dLIGO TMS SEISMIC SAFETY STOP CHAMBER BRACKET, PART PDM REV: X-042, DRAWING PDM REV: X-028



### FLAT-PATTERN

 CALIFORNIA INSTITUTE OF TECHNOLOGY MASSACHUSETTS INSTITUTE OF TECHNOLOGY	
SIZE <b>B</b>	DWG. NO. D1001929
SCALE: NONE	PROJECTION: 
REV. v3	SHEET 2 OF 2