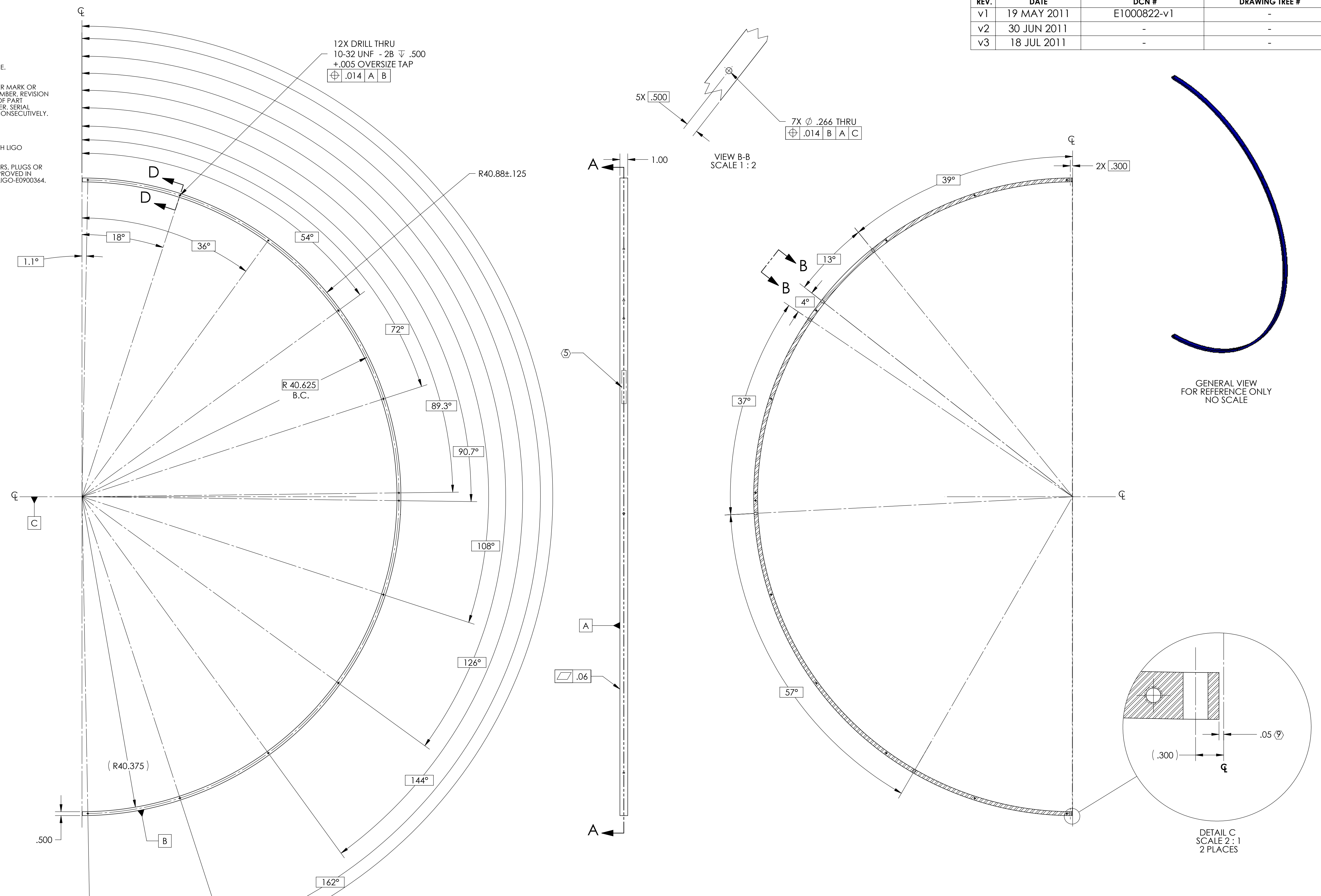


REV.	DATE	DCN #	DRAWING TREE #
v1	19 MAY 2011	E1000822-v1	-
v2	30 JUN 2011	-	-
v3	18 JUL 2011	-	-

**NOTES: UNLESS OTHERWISE SPECIFIED**

1. INTERPRET DRAWING PER ASME Y14.5-1994.
2. REMOVE ALL SHARP EDGES 0.005" TO 0.015".
3. DO NOT SCALE FROM DRAWING.
4. ALL MACHINING FLUIDS MUST BE FULLY SYNTHETIC, FULLY WATER SOLUBLE AND FREE OF SULFUR, SILICONE, AND CHLORINE. REFER TO LIGO E0900237 FOR LIST OF APPROVED COOLANTS.
5. SCRIBE, ENGRAVE (A VIBRATORY TOOL MAY BE USED), LASER MARK OR MECHANICALLY STAMP (NO INKS OR DYES) DRAWING PART NUMBER, REVISION (AND VARIANT OR "TYPE" IF APPLICABLE) ON NOTED SURFACE OF PART FOLLOWED ON THE NEXT LINE WITH A THREE DIGIT SERIAL NUMBER. SERIAL NUMBERS START AT 001 FOR THE FIRST ARTICLE AND PROCEED CONSECUTIVELY. USE MINIMUM 0.12" HIGH CHARACTERS, UNLESS THE SIZE OF THE PART DICTATES SMALLER CHARACTERS. EXAMPLE: DXXXXXX-VY, TYPE-XX, S/N XXX
6. ALL PARTS SHALL BE MANUFACTURED IN ACCORDANCE WITH LIGO SPECIFICATION E0900364.
7. ALL MATERIAL IS TO BE VIRGIN MATERIAL (I.E. NO WELD REPAIRS, PLUGS OR RECYCLED MATERIAL). NO REPAIRS SHALL BE MADE UNLESS APPROVED IN ADVANCE, AND IN WRITING, BY LIGO LABORATORY. REFER TO LIGO-E0900364.
8. ELECTRO POLISH TO REMOVE .0005-.001 PER SIDE.

⊕ PART NOT TRUE HALF CIRCLE.



NOTES AND TOLERANCES: (UNLESS OTHERWISE SPECIFIED)				LIGO CALIFORNIA INSTITUTE OF TECHNOLOGY MASSACHUSETTS INSTITUTE OF TECHNOLOGY		PART NAME	
DIMENSIONS ARE IN INCHES				SYSTEM		TUBE BAFFLE RIGHT BRACE	
TOLERANCES: .XX ± .03 .XXX ± .010				ADVANCED LIGO		SUB-SYSTEM	
ANGULAR ± 0.5°				NEXT ASSY		AOS	
MATERIAL		FINISH		D		DWG. NO.	
6061-T6 Al		63 μinch		D1002864		D1001926	
				DESIGNER		TQ. NGUYEN	
				DRAFTER		TQ. NGUYEN	
				CHECKER		M. SMITH	
				APPROVAL		D. COYNE	
				SIZE		DWG. NO.	
				D		D1001926	
				SCALE: 1:6		PROJECTION:	
				SHEET 1 OF 1		REV.	
						v3	

D1001926.dwg LIGO\_MSC Tube Baffle Right Brace PART PDM REV: X-026 DRAWING PDM REV: X-030