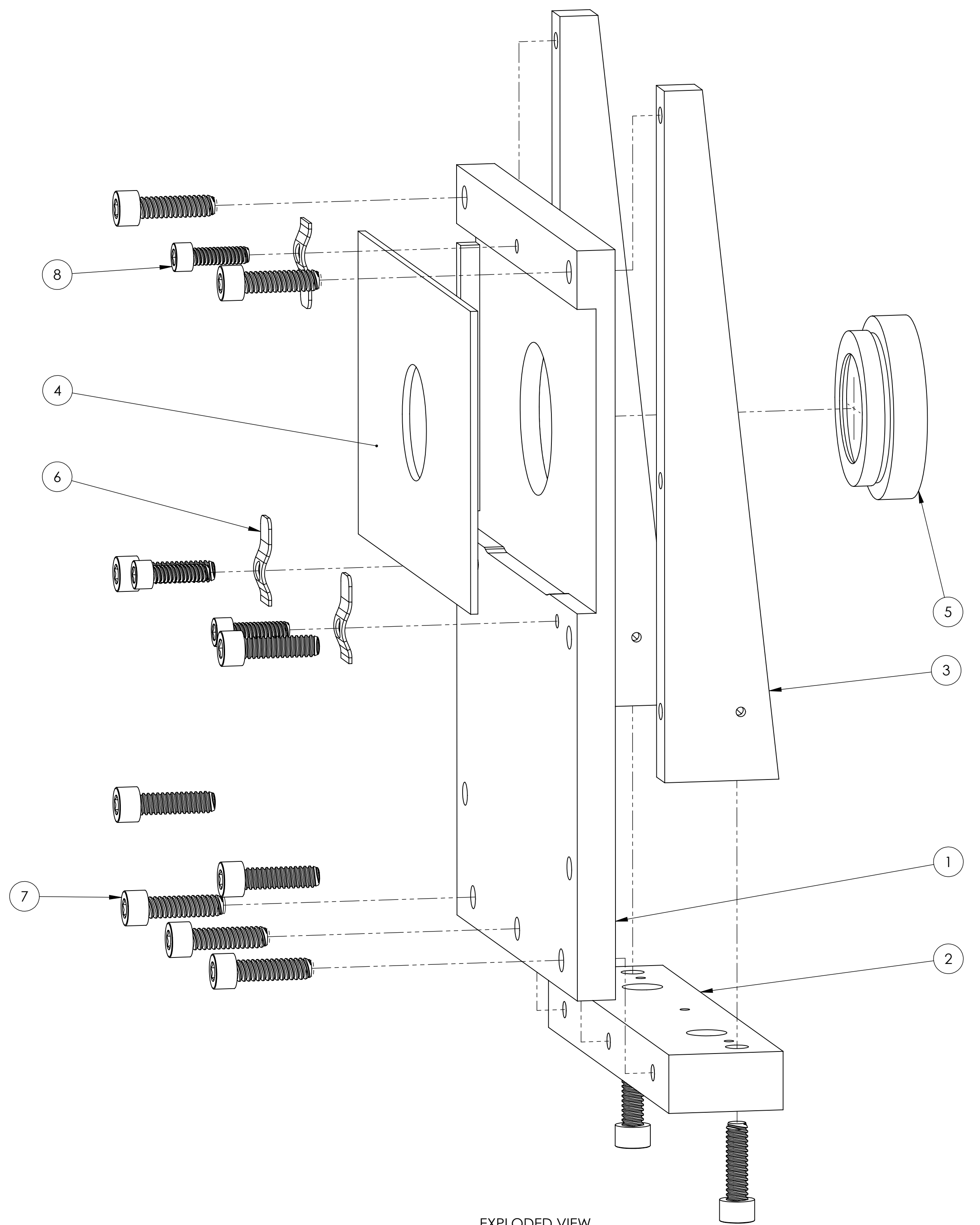
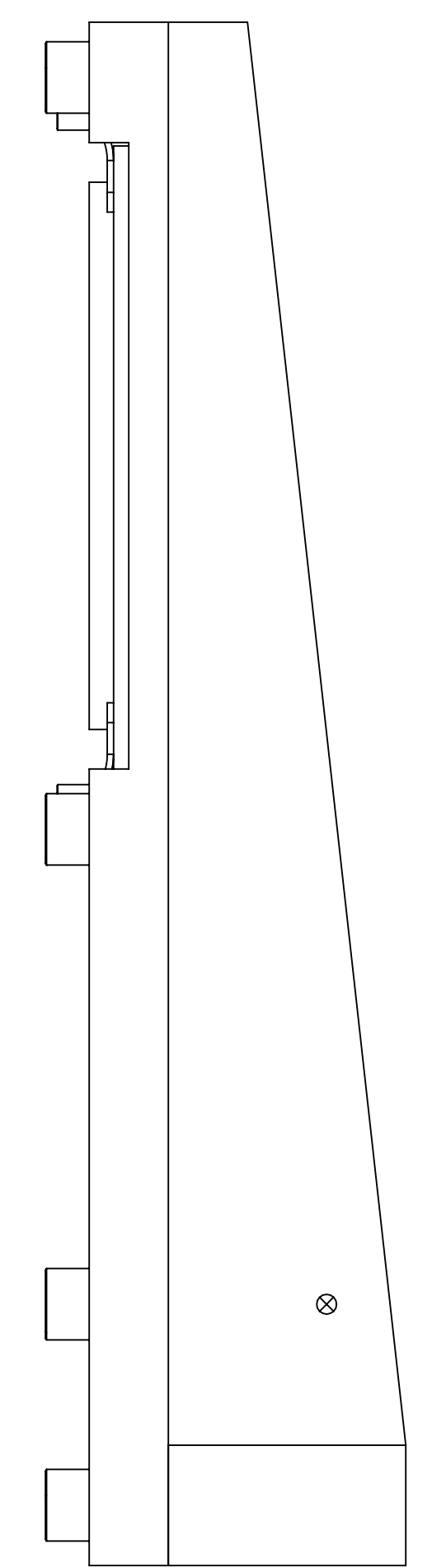
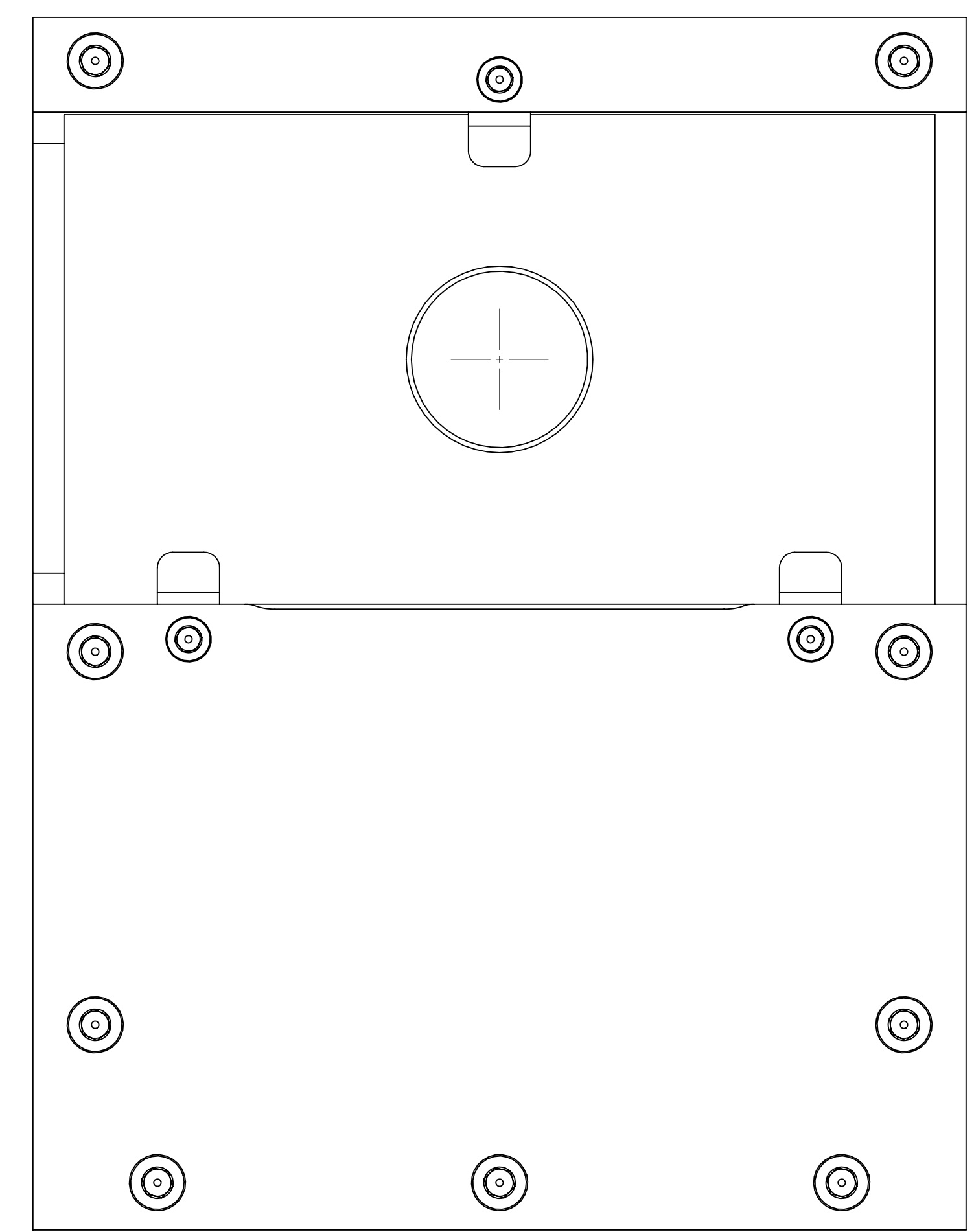
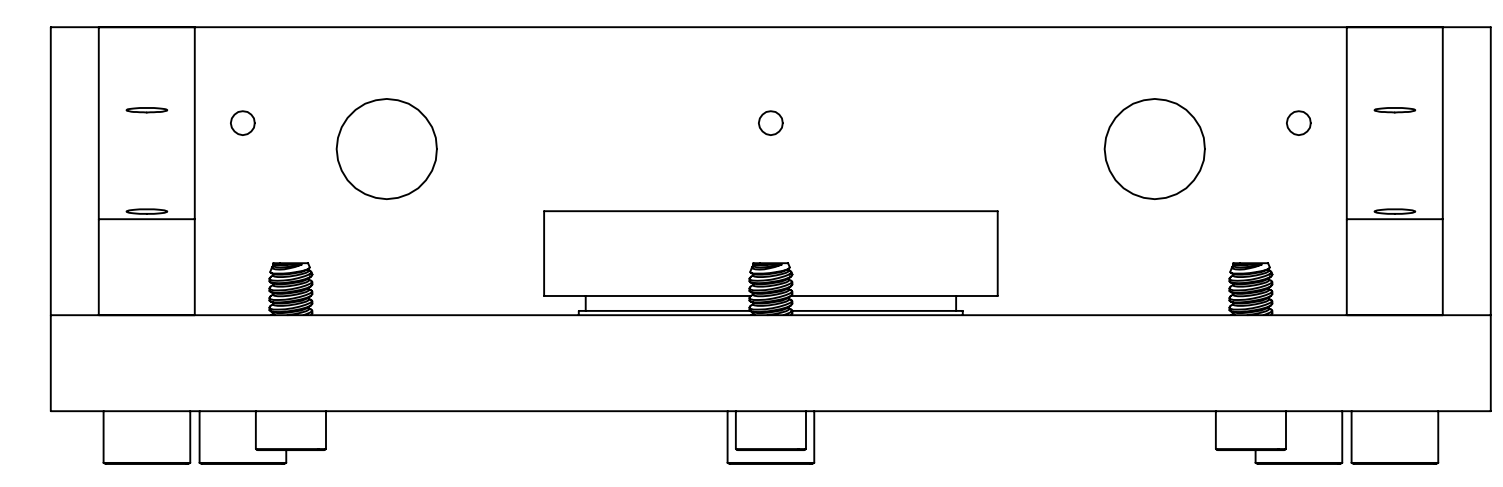


NOTES CONTINUED:  
5

REV.	DATE	DCN #	DRAWING TREE #
v1	7 OCT 2010	E1000563	-
v2	17 DEC 2010	E1000563	-
-	-	-	-



EXPLODED VIEW  
SCALE 2:1



ITEM NO.	PART NUMBER	DESCRIPTION	MATERIAL	Exploded View/QTY.	SPARE	TOTAL
8	92200A108	Head Cap Screw 300 Series SS, 4-40 Thrd, 3/8" Length, MS 16995-10	18-8 SSSL	3		0
7	92200A148	Head Cap Screw 300 Series SS, 6-32 Thrd, 1/2" Length, MS 16995-16	Ag-PLATED 300 SSSL	11		0
6	D1001919	BEAM DUMP MOUNTING CLAMP	304 SSSL	3		0
5	D1001924	C-MOUNT RETICLE	UNKNOWN	1		0
4	D1001920	INPUT BAFFLE BEAM DUMP	18 GA A424 TYPE I STEEL	1		0
3	D1001916	INPUT BAFFLE SIDE SUPPORT	6061-T6 AI	2		0
2	D1001917	INPUT BAFFLE BASE	6061-T6 AI	1		0
1	D1001915	INPUT BAFFLE HOLDER	6061-T6 AI	1		0
				<b>PARTS LIST</b>		

NOTES AND TOLERANCES: (UNLESS OTHERWISE SPECIFIED)	
1. INTERPRET DRAWING PER ASME Y14.5-1994. 2. REMOVE ALL SHARP EDGES, R.02 MIN. 3. DO NOT SCALE FROM DRAWING. 4. ALL MACHINING FLUIDS MUST BE FULLY SYNTHETIC, FULLY WATER SOLUBLE AND FREE OF SULFUR, SILICONE, AND CHLORINE.	
DIMENSIONS ARE IN INCHES	
TOLERANCES: .XX ± .01 .XXX ± .005	
ANGULAR ± 0.5°	
MATERIAL	N/A
FINISH	N/A μinch

LIGO CALIFORNIA INSTITUTE OF TECHNOLOGY MASSACHUSETTS INSTITUTE OF TECHNOLOGY		PART NAME	
ADVANCED LIGO		INPUT BAFFLE ASSY	
DESIGNER	TQ. NGUYEN	DATE	01 AUG 2010
DRAFTER	TQ. NGUYEN	SIZE	D
CHECKER	M. SMITH	DWG. NO.	D1001918
APPROVAL	D. COYNE	REV.	v2
NEXT ASSY		SCALE:	2:1
D0900623		PROJECTION:	
		SHEET 1 OF 1	

D1001918.dwg: AOS: Wedge Window Input Baffle Assy: PART PDM REV: X-010: DRAWING PDM REV: X-009