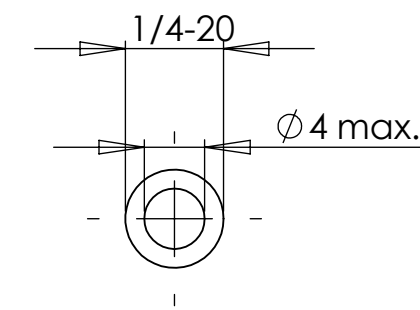
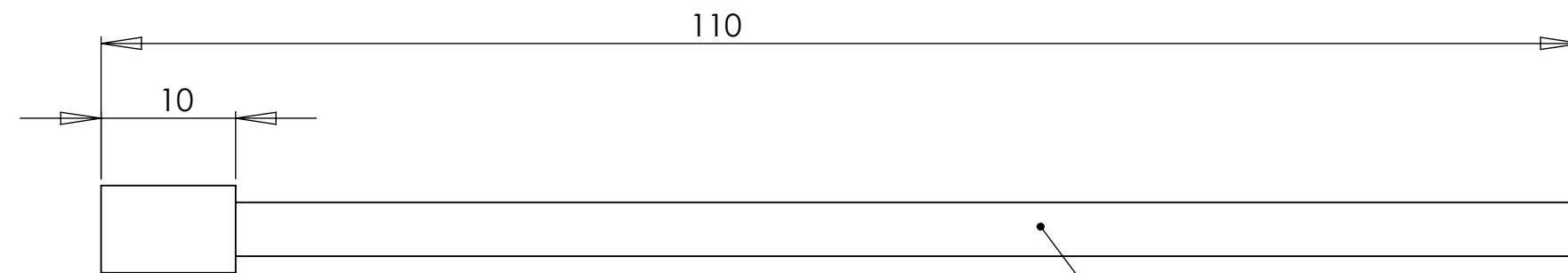


NOTES CONTINUED:

⑤ SCRIBE, ENGRAVE, OR MECHANICALLY STAMP (NO INKS OR DYES) DRAWING PART NUMBER AND REVISION ON NOTED SURFACE FOLLOWED ON THE NEXT LINE BY A THREE DIGIT SERIAL NUMBER. SERIAL NUMBERS START AT 001 FOR THE FIRST ARTICLE AND PROCEED CONSECUTIVELY. USE .07" HIGH CHARACTERS. EXAMPLE: DXXXXXXX-VY, S/N 001. A VIBRATORY TOOL MAY BE USED.

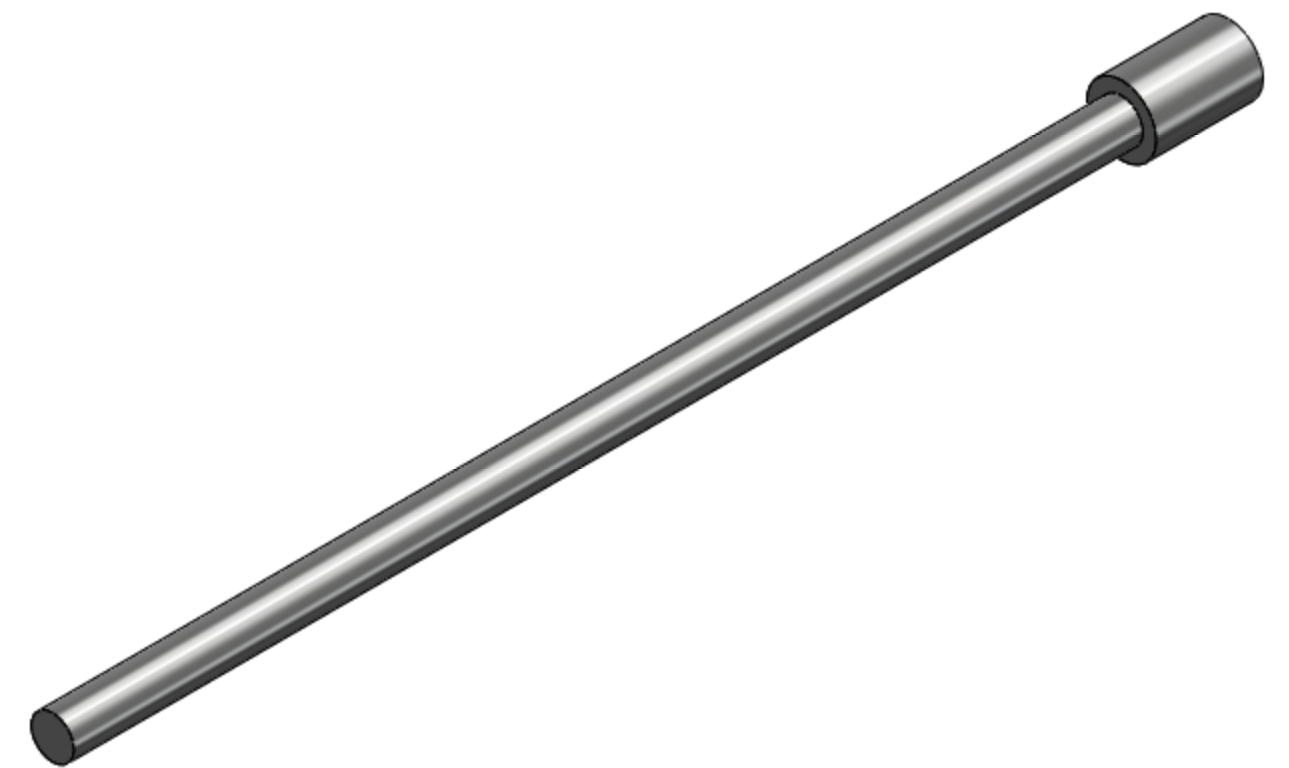
⑥ MACHINE ALL SURFACES.

| REV. | DATE | DCN # | DRAWING TREE # |
|------|------|-------|----------------|
| | | | |
| | | | |
| | | | |



THREAD 1/4-20 FOR 9MM FROM THIS END

ENGRQAVE PART NO SEE NOTES



NOTES AND TOLERANCES: (UNLESS OTHERWISE SPECIFIED)

DIMENSIONS ARE IN MM

TOLERANCES:
 .XX ± 0.10
 .XXX ± 0.010

ANGULAR ± 0.2°

1. INTERPRET DRAWING PER ASME Y14.5-1994.
2. REMOVE ALL SHARP EDGES, R.02 MIN.
3. DO NOT SCALE FROM DRAWING.
4. ALL MACHINING FLUIDS MUST BE FULLY SYNTHETIC, FULLY WATER SOLUBLE AND FREE OF SULFUR, SILICONE, AND CHLORINE.

MATERIAL
 AISI 316 Stainless Steel (SS)

FINISH
 1.6 µm



SYSTEM
 ADVANCED LIGO

SUB-SYSTEM
 SUS

NEXT ASSY

PART NAME

SCAFFOLD GUIDE ROD

| | | |
|-----------------|--------------|----------|
| DESIGNER | L CUNNINGHAM | 15/07/10 |
| DRAFTER | L CUNNINGHAM | 21/07/10 |
| CHECKER | | |
| APPROVAL | | |

SIZE
 c

DWG. NO.
 D1001823

REV.
 v2

SCALE: 2:1 **PROJECTION:** SHEET 1 OF 1