

NOTES CONTINUED:

5. BAG AND TAG ASSEMBLIES INDIVIDUALLY WITH THEIR DRAWING NUMBER, REVISION, VARIANT OR "TYPE", AND SERIAL NUMBER. SERIAL NUMBERS START AT 001 FOR THE FIRST ARTICLE AND PROCEED CONSECUTIVELY. EXAMPLE (TAG): DXXXXXX-VY, TYPE-RIGHT, S/N 001

6. MASS: 8.336 KG [18.377 LB].

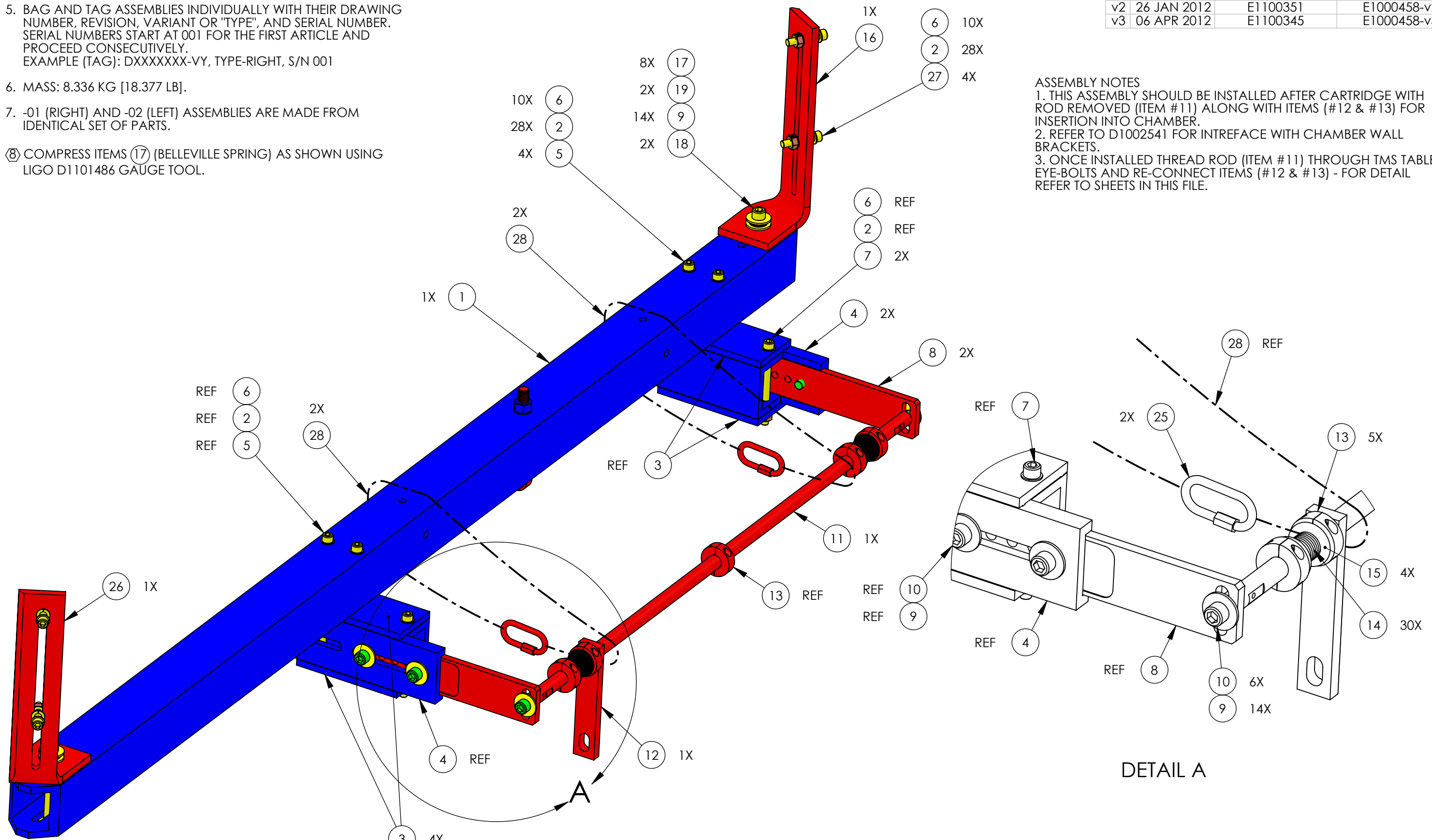
7. -01 (RIGHT) AND -02 (LEFT) ASSEMBLIES ARE MADE FROM IDENTICAL SET OF PARTS.

8. COMPRESS ITEMS (17) (BELLEVILLE SPRING) AS SHOWN USING LIGO D1101486 GAUGE TOOL.

REV.	DATE	DCN #	DRAWING TREE #
v1	26 MAY 2011	E1000384	E1000458-v1
v2	26 JAN 2012	E1100351	E1000458-v2
v3	06 APR 2012	E1100345	E1000458-v3

ASSEMBLY NOTES

1. THIS ASSEMBLY SHOULD BE INSTALLED AFTER CARTRIDGE WITH ROD REMOVED (ITEM #11) ALONG WITH ITEMS (#12 & #13) FOR INSERTION INTO CHAMBER.
2. REFER TO D1002541 FOR INTERFACE WITH CHAMBER WALL BRACKETS.
3. ONCE INSTALLED THREAD ROD (ITEM #11) THROUGH TMS TABLE EYE-BOLTS AND RE-CONNECT ITEMS (#12 & #13) - FOR DETAIL REFER TO SHEETS IN THIS FILE.



D1001781 LIGO TMS SEISMIC SAFETY STOP STRUCTURE, PART PDM REV: X-206, DRAWING PDM REV: X-134

NOTES AND TOLERANCES: (UNLESS OTHERWISE SPECIFIED)

1. INTERPRET DRAWING PER ASME Y14.5-1994.
 2. REMOVE ALL SHARP EDGES, .005-.015, FOR MACHINED PARTS. ROUND ALL EDGES APPROXIMATELY R.02 FOR SHEET METAL PARTS.
 3. DO NOT SCALE FROM DRAWING.
 4. ALL MACHINING FLUIDS MUST BE FULLY SYNTHETIC, FULLY WATER SOLUBLE AND FREE OF SULFUR, SILICONE, AND CHLORINE.

DIMENSIONS ARE IN INCHES

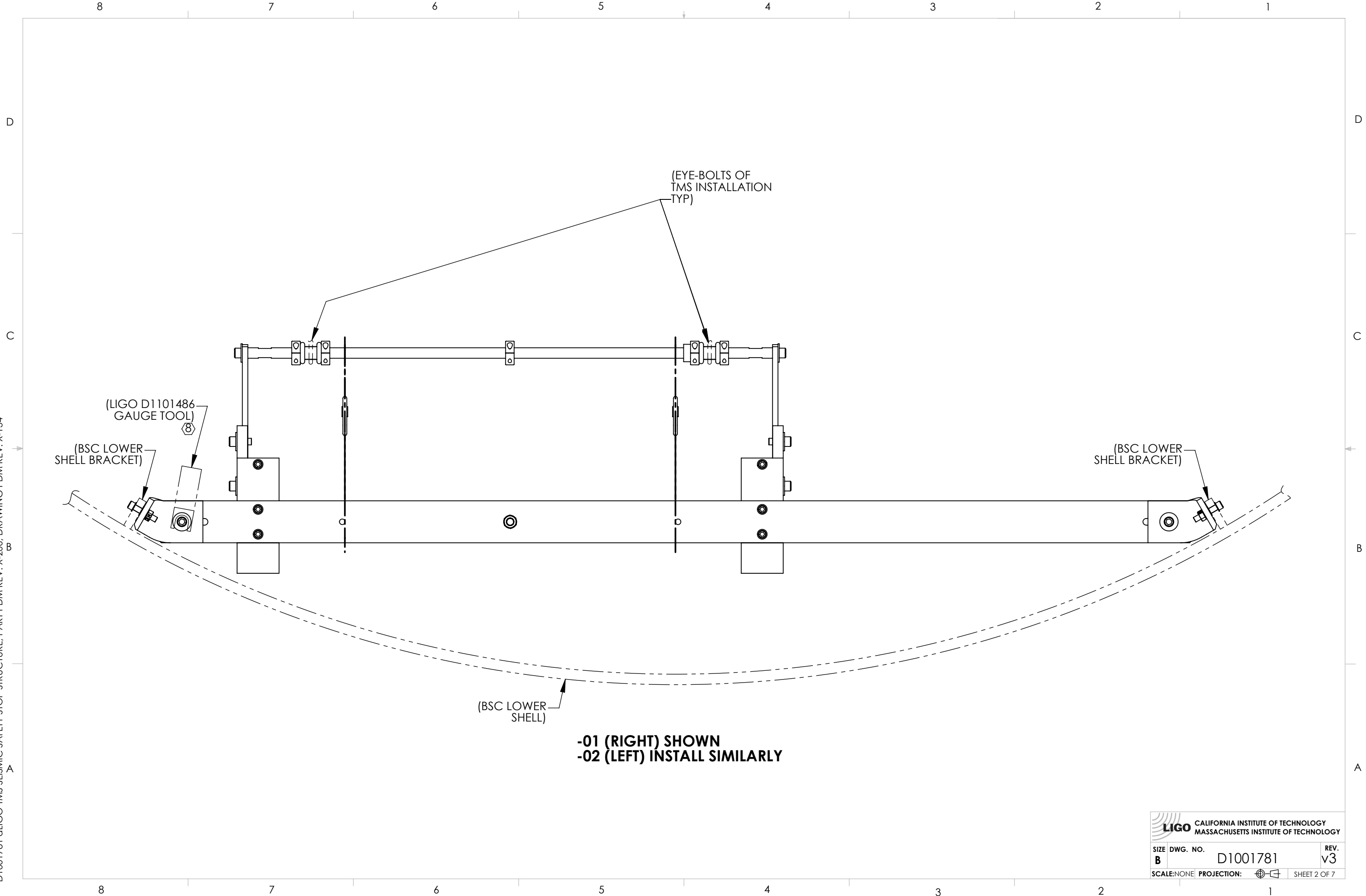
TOLERANCES:
 .XX ± .02
 .XXX ± .010
 ANGULAR ± N/A°


MATERIAL N/A

FINISH N/A μinch

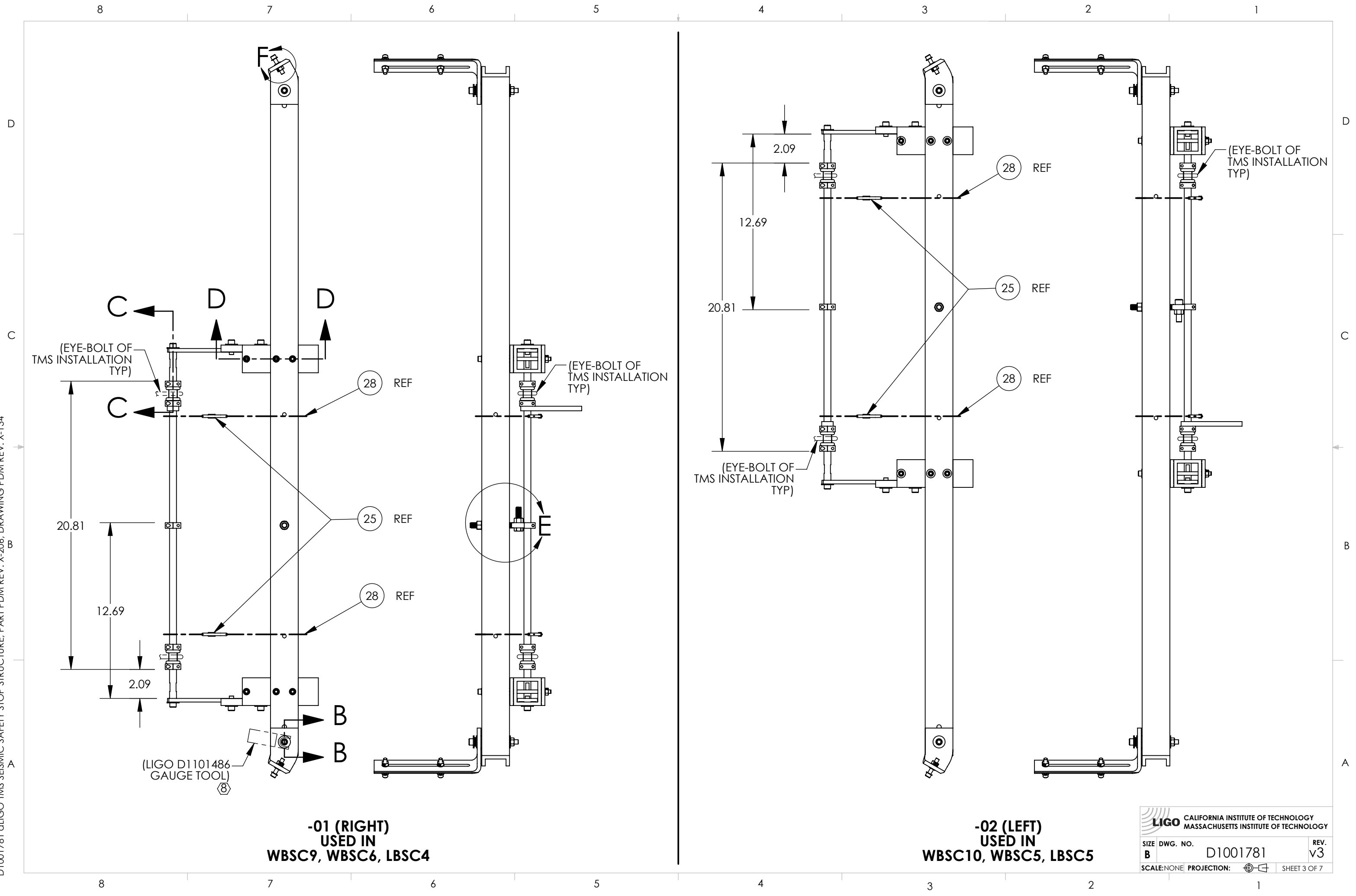
CALIFORNIA INSTITUTE OF TECHNOLOGY MASSACHUSETTS INSTITUTE OF TECHNOLOGY		PART NAME ALIGO TMS SEISMIC SAFETY STOP STRUCTURE	
SYSTEM ADVANCED LIGO	SUB-SYSTEM AOS	DESIGNER K. MAILLAND	DATE 12 AUG 2010
DRAFTER M. MILLER	CHECKER SEE DCN	SIZE B	DWG. NO. D1001781
NEXT ASSY D0900502 D0900512 D0901150 D0901154 D0900471 D0900506	APPROVAL SEE DCN	SCALE: NONE	PROJECTION:
		SHEET 1 OF 7	REV. v3

D1001781 LIGO TMS SEISMIC SAFETY STOP STRUCTURE, PART PDM REV: X-206, DRAWING PDM REV: X-134



 CALIFORNIA INSTITUTE OF TECHNOLOGY MASSACHUSETTS INSTITUTE OF TECHNOLOGY		
SIZE	DWG. NO.	REV.
B	D1001781	v3
SCALE: NONE	PROJECTION:	SHEET 2 OF 7

D1001781 LIGO TMS SEISMIC SAFETY STOP STRUCTURE, PART PDM REV: X-206, DRAWING PDM REV: X-134



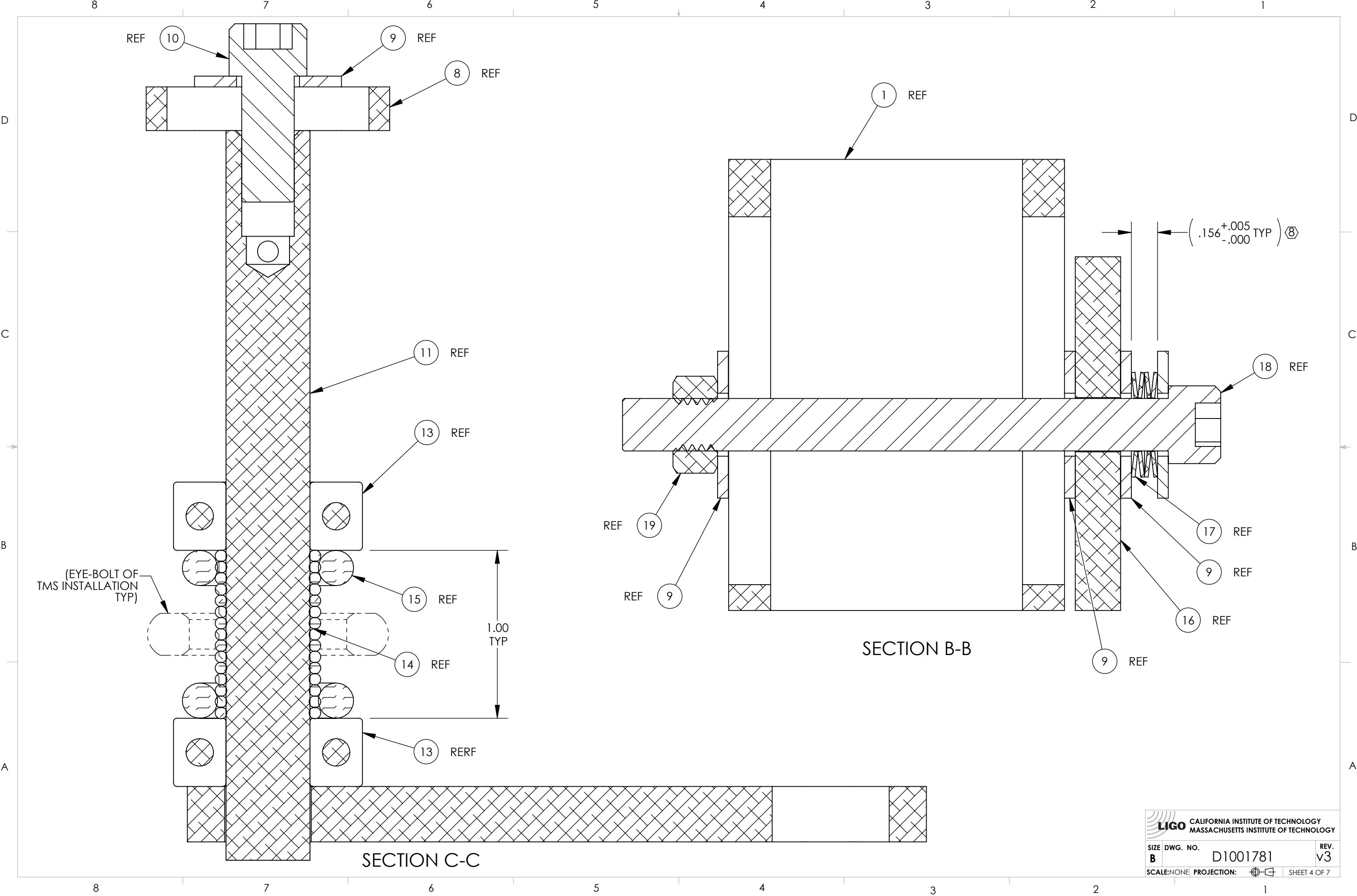
-01 (RIGHT)
USED IN
WBSC9, WBSC6, LBSC4

-02 (LEFT)
USED IN
WBSC10, WBSC5, LBSC5

LIGO CALIFORNIA INSTITUTE OF TECHNOLOGY
MASSACHUSETTS INSTITUTE OF TECHNOLOGY

SIZE DWG. NO.	REV.
B D1001781	v3
SCALE: NONE	PROJECTION:
SHEET 3 OF 7	

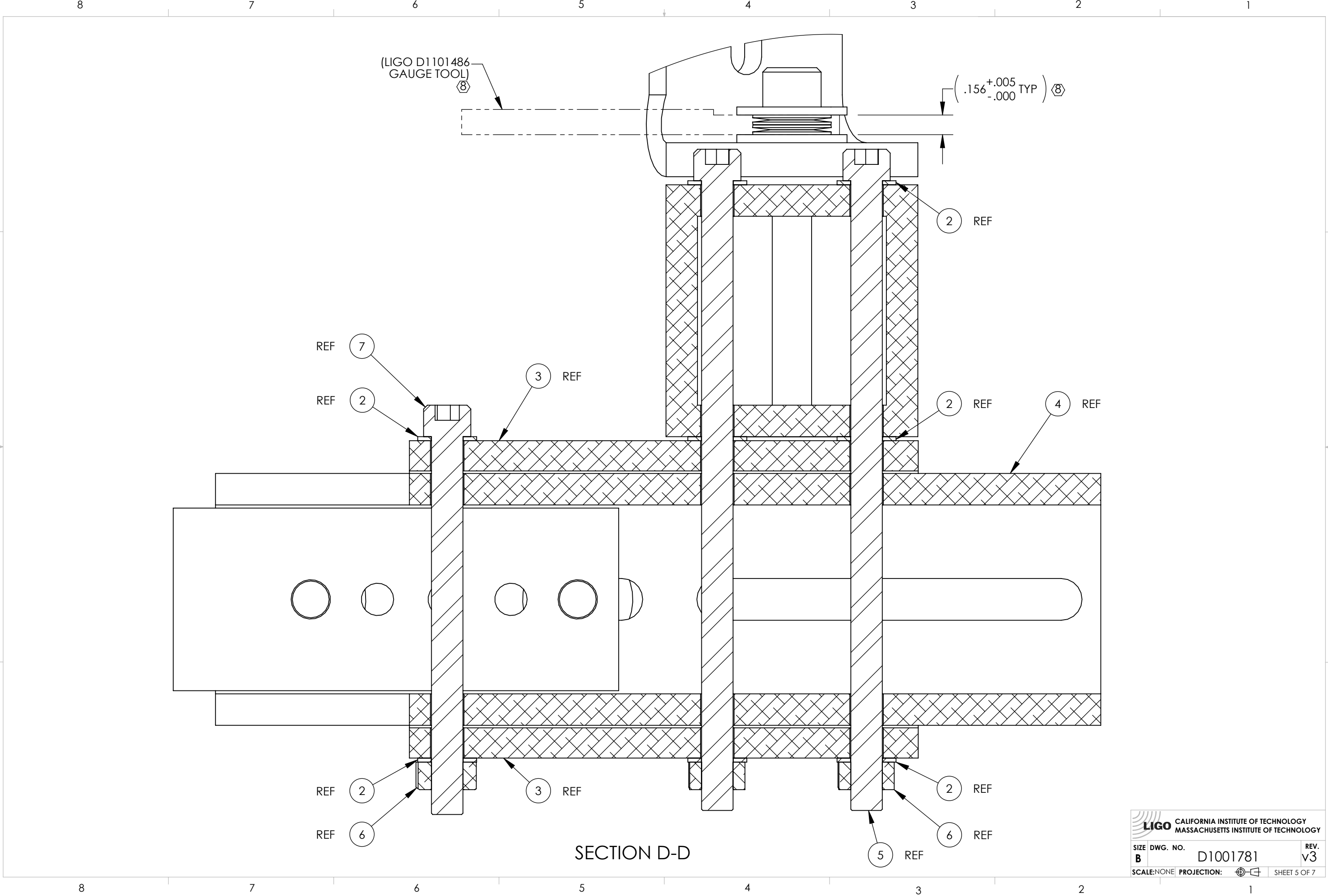
D1001781 dLIGO TMS SEISMIC SAFETY STOP STRUCTURE, PART PDM REV: X-206, DRAWING PDM REV: X-134



LIGO CALIFORNIA INSTITUTE OF TECHNOLOGY
 MASSACHUSETTS INSTITUTE OF TECHNOLOGY

SIZE	DWG. NO.	REV.
B	D1001781	v3
SCALE: NONE	PROJECTION:	SHEET 4 OF 7

D1001781 dLIGO TMS SEISMIC SAFETY STOP STRUCTURE, PART PDM REV: X-206, DRAWING PDM REV: X-134



(LIGO D1101486
GAUGE TOOL) Ⓢ

$.156^{+.005}_{-.000}$ TYP Ⓢ

REF (7)
REF (2) REF (3)

(2) REF
(2) REF (4) REF

REF (2) REF (3)
REF (6)

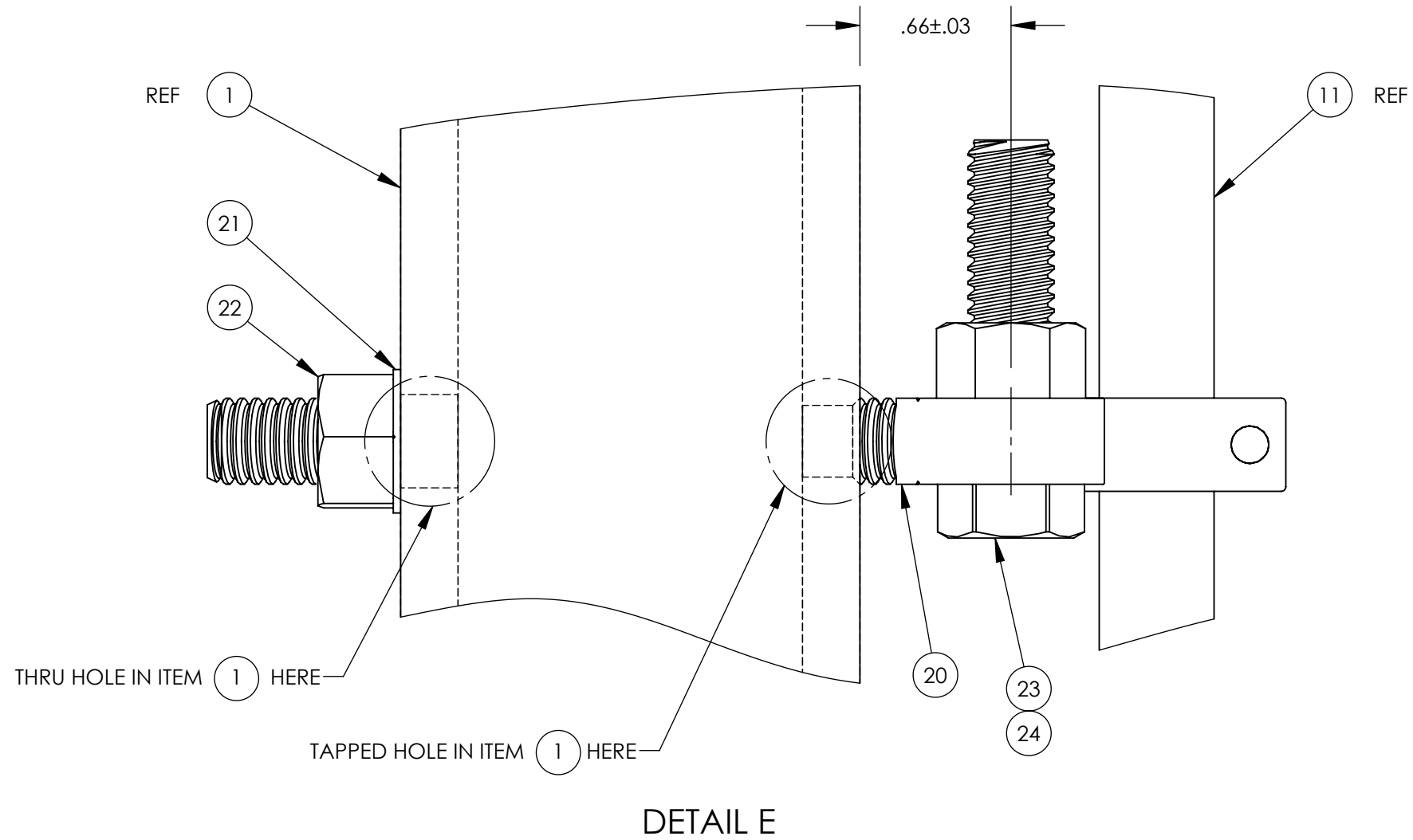
(2) REF
(6) REF
(5) REF

SECTION D-D

LIGO CALIFORNIA INSTITUTE OF TECHNOLOGY
MASSACHUSETTS INSTITUTE OF TECHNOLOGY

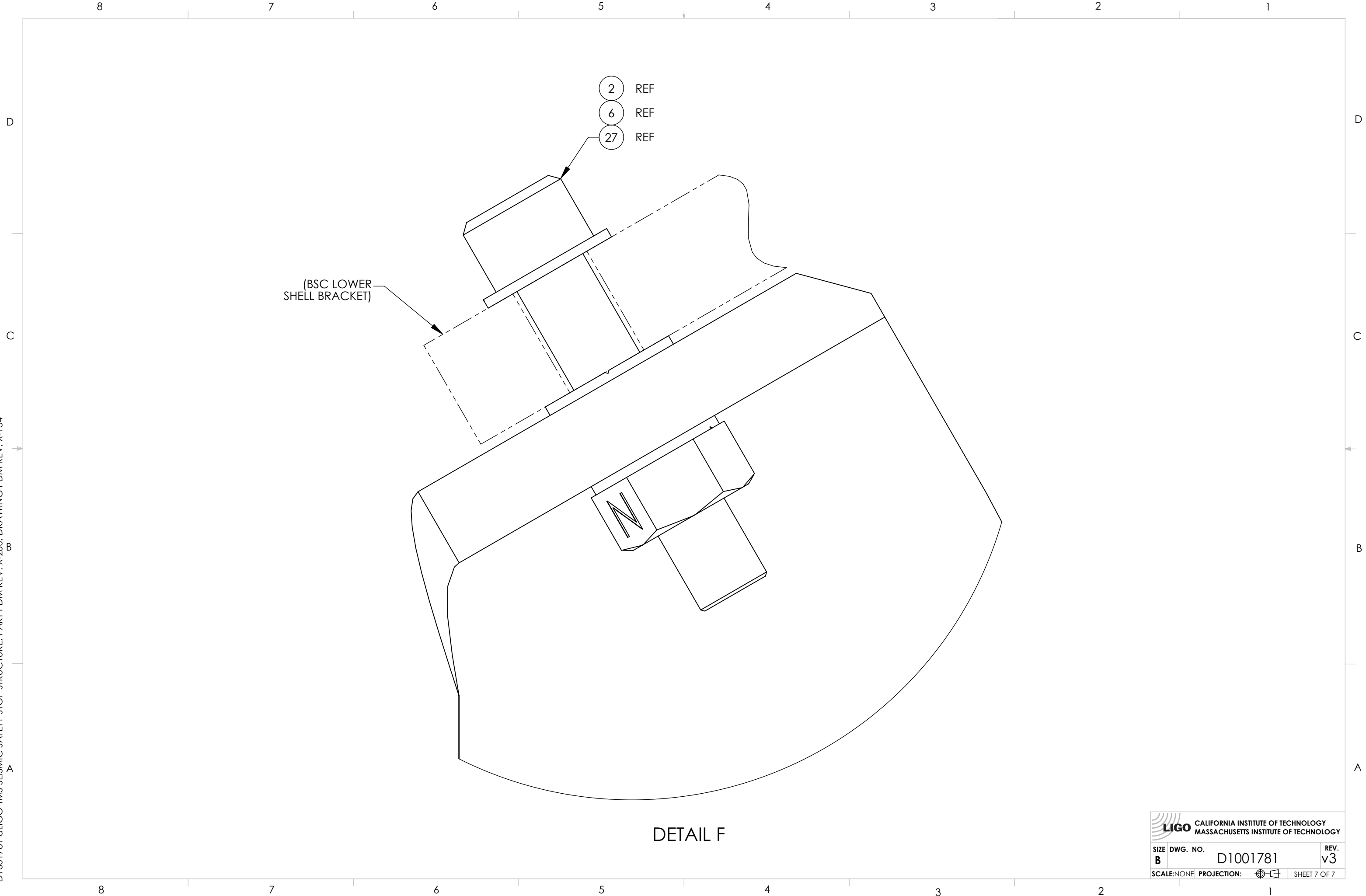
SIZE	DWG. NO.	REV.
B	D1001781	v3
SCALE: NONE	PROJECTION:	SHEET 5 OF 7

D1001781 dLIGO TMS SEISMIC SAFETY STOP STRUCTURE, PART PDM REV: X-206, DRAWING PDM REV: X-134



 CALIFORNIA INSTITUTE OF TECHNOLOGY MASSACHUSETTS INSTITUTE OF TECHNOLOGY		
SIZE	DWG. NO.	REV.
B	D1001781	v3
SCALE: NONE	PROJECTION:	SHEET 6 OF 7

D1001781 LIGO TMS SEISMIC SAFETY STOP STRUCTURE, PART PDM REV: X-206, DRAWING PDM REV: X-134



DETAIL F

 LIGO CALIFORNIA INSTITUTE OF TECHNOLOGY MASSACHUSETTS INSTITUTE OF TECHNOLOGY		
SIZE	DWG. NO.	REV.
B	D1001781	v3
SCALE: NONE	PROJECTION:	SHEET 7 OF 7