

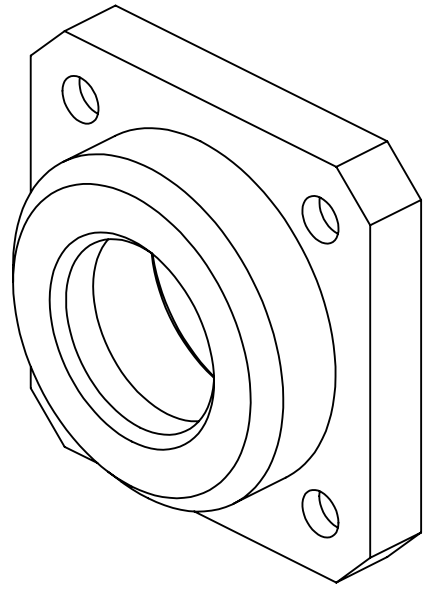
D1001770 BOTTOM BEARING SUPPORT, HAM STRUCTURE LIFT, aLIGO, SUS, PART PDM REV: X-009, DRAWING PDM REV: X-007

NOTES CONTINUED:
 5. SCRIBE, ENGRAVE, OR MECHANICALLY STAMP (NO INKS OR DYES) DRAWING PART NUMBER, REVISION (AND VARIANT OR "TYPE" IF APPLICABLE) ON NOTED SURFACE OF PART FOLLOWED ON THE NEXT LINE WITH A THREE DIGIT SERIAL NUMBER. SERIAL NUMBERS START AT 001 FOR THE FIRST ARTICLE AND PROCEED CONSECUTIVELY. USE MINIMUM 0.12" HIGH CHARACTERS, UNLESS THE SIZE OF THE PART DICTATES SMALLER CHARACTERS. A VIBRATORY TOOL MAY BE USED.
 EXAMPLE: DXXXXXX-VY, TYPE-XX, S/N XXX

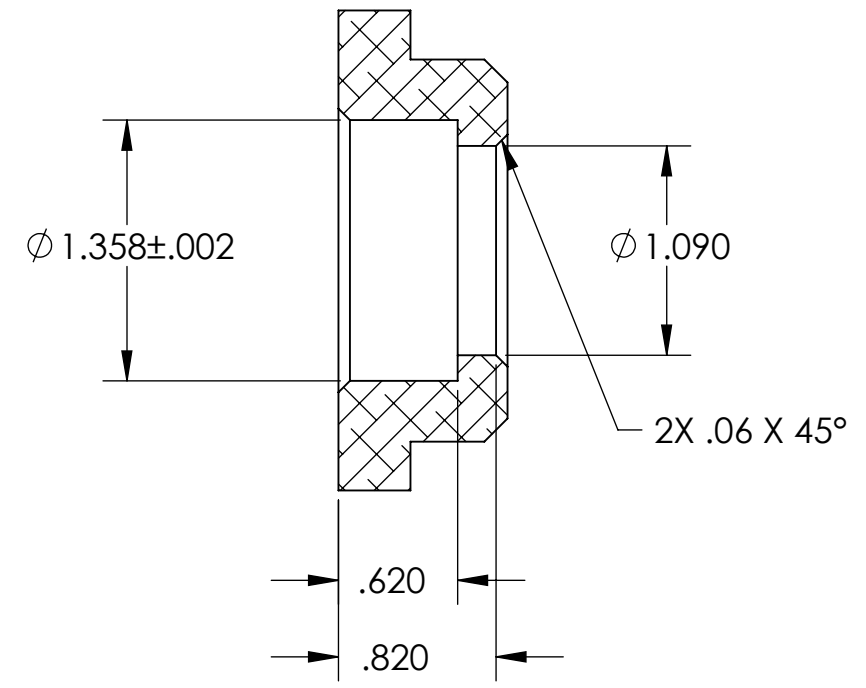
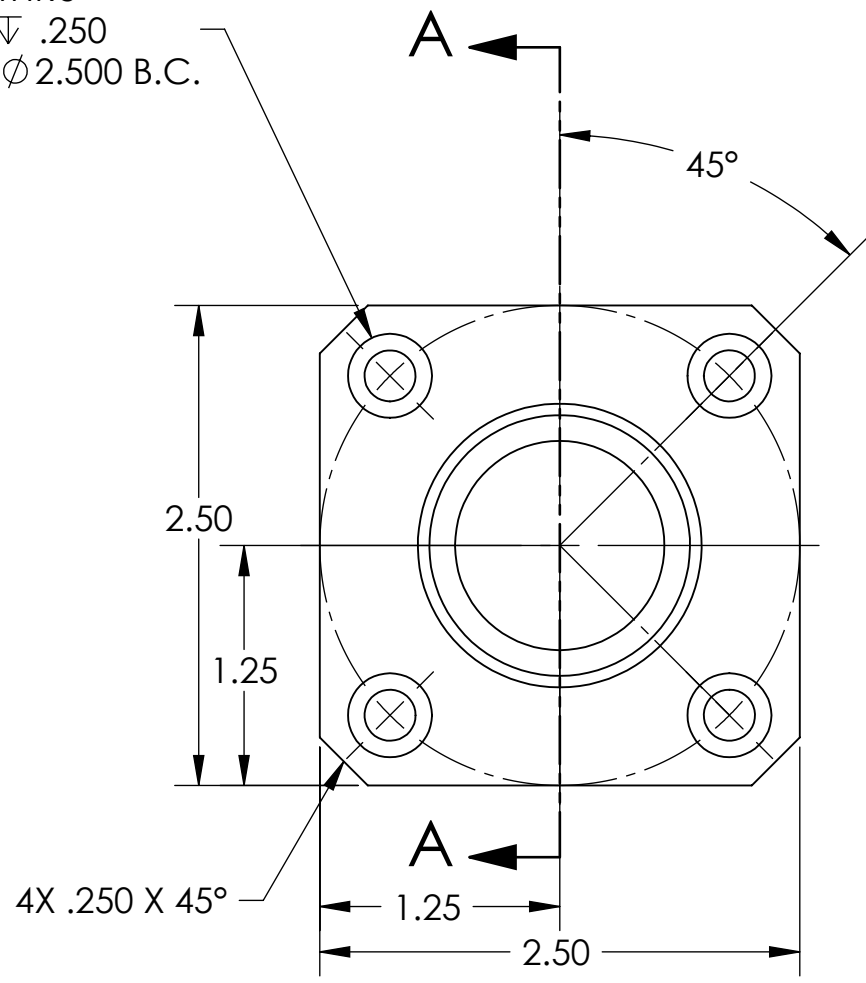
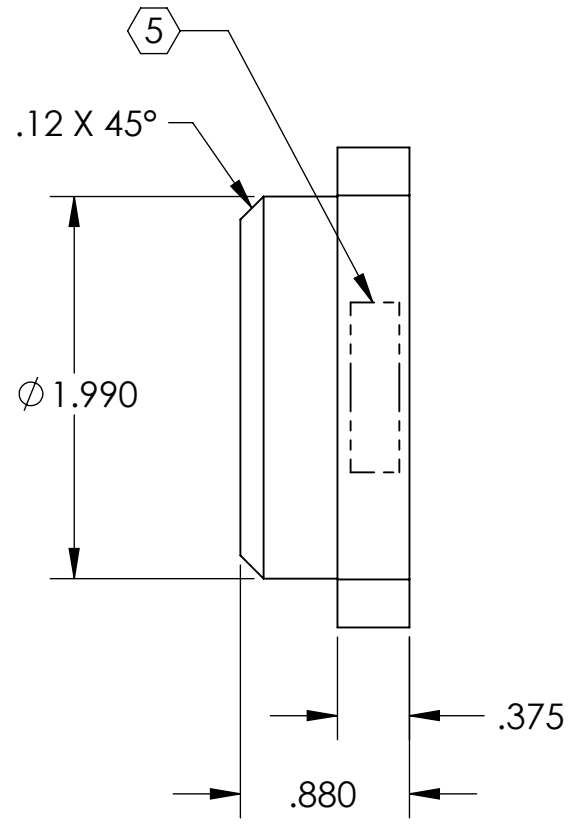
6. MACHINE ALL SURFACES TO REMOVE OXIDES AND MILL FINISH. USE OF ABRASIVE REMOVAL TECHNIQUES IS NOT ALLOWED.

7. ALL PARTS SHALL BE MANUFACTURED IN ACCORDANCE WITH LIGO SPECIFICATION E0900364.

| REV. | DATE | DCN # | DRAWING TREE # |
|------|-------------|----------|----------------|
| V1 | 22 JUL 2010 | E1000270 | - |
| V2 | 27 OCT 2010 | E1000875 | - |
| - | - | - | - |



4X ϕ .266 THRU
 \square ϕ .438 ∇ .250
 4 PLCS EQ SP ON ϕ 2.500 B.C.



SECTION A-A

| NOTES AND TOLERANCES: (UNLESS OTHERWISE SPECIFIED) | |
|--|---------------|
| DIMENSIONS ARE IN INCHES | |
| TOLERANCES: .XX \pm .01 .XXX \pm .005 ANGULAR \pm 0.5° | |
| 1. INTERPRET DRAWING PER ASME Y14.5-1994. 2. REMOVE ALL SHARP EDGES, R.02 MIN. 3. DO NOT SCALE FROM DRAWING. 4. ALL MACHINING FLUIDS MUST BE FULLY SYNTHETIC, FULLY WATER SOLUBLE AND FREE OF SULFUR, SILICONE, AND CHLORINE. | |
| MATERIAL | FINISH |
| 6061-T6 Al | 32 μ inch |

| | | | |
|---|------------|--|-------------|
| CALIFORNIA INSTITUTE OF TECHNOLOGY MASSACHUSETTS INSTITUTE OF TECHNOLOGY | | PART NAME BOTTOM BEARING SUPPORT, HAM STRUCTURE LIFT | |
| SYSTEM | SUB-SYSTEM | DESIGNER | DATE |
| ADVANCED LIGO | SUS | K. BUCKLAND | 14 APR 2010 |
| NEXT ASSY | D1001664 | DRAFTER | DATE |
| | | L. OLMOS | 7 JUN 2010 |
| | | CHECKER | DATE |
| | | K. BUCKLAND | 22 JUL 2010 |
| | | APPROVAL | |
| SCALE: 1:1 | | PROJECTION: | |
| SHEET 1 OF 1 | | SIZE DWG. NO. B D1001770 | |
| | | REV. v2 | |