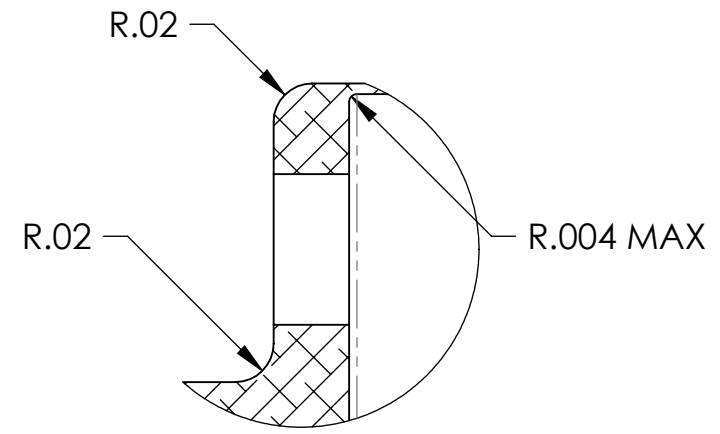
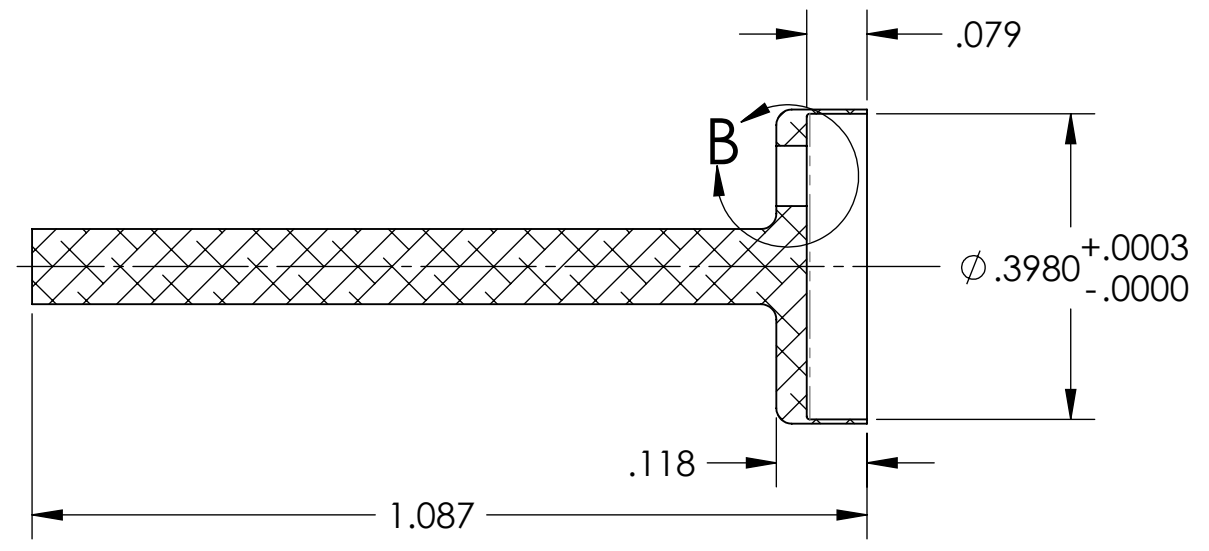
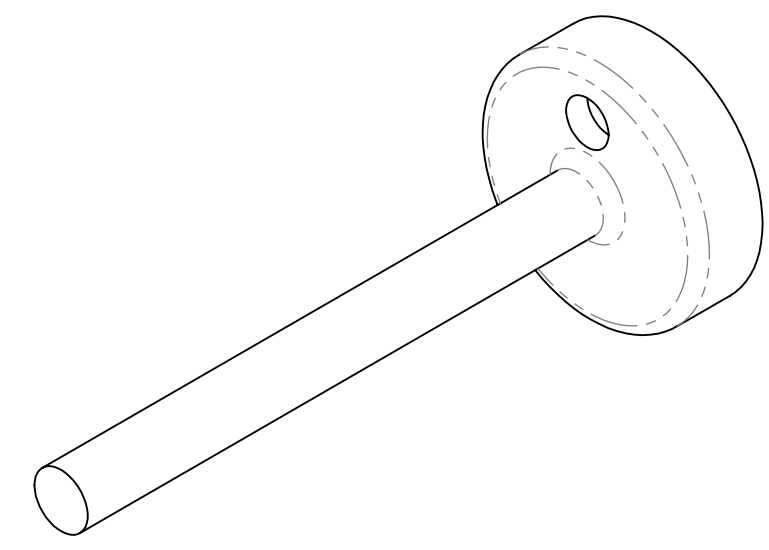


NOTES CONTINUED:
 5. SCRIBE, ENGRAVE, OR MECHANICALLY STAMP (NO DYES OR INKS) A UNIQUE THREE DIGIT SERIAL NUMBER & REVISION NUMBER ON EACH PART. SERIAL NUMBERS START AT 001 FOR THE FIRST ARTICLE AND PROCEED CONSECUTIVELY. BAG AND TAG PARTS WITH THEIR DRAWING PART NUMBER, REVISION, VARIANT OR "TYPE" (IF APPLICABLE), AND QUANTITY. IF PARTS ARE TOO SMALL TO SCRIBE, BAGGING AND TAGGING ALONE IS SUFFICIENT.
 EXAMPLE (PART): 001-v1
 EXAMPLE (TAG): DXXXXXX-VY, TYPE-XX, QTY: TBD
 6. MACHINE ALL SURFACES TO REMOVE OXIDES AND MILL FINISH. USE OF ABRASIVE REMOVAL TECHNIQUES IS NOT ALLOWED.
 7. ALL PARTS SHALL BE MANUFACTURED IN ACCORDANCE WITH LIGO SPECIFICATION E0900364.

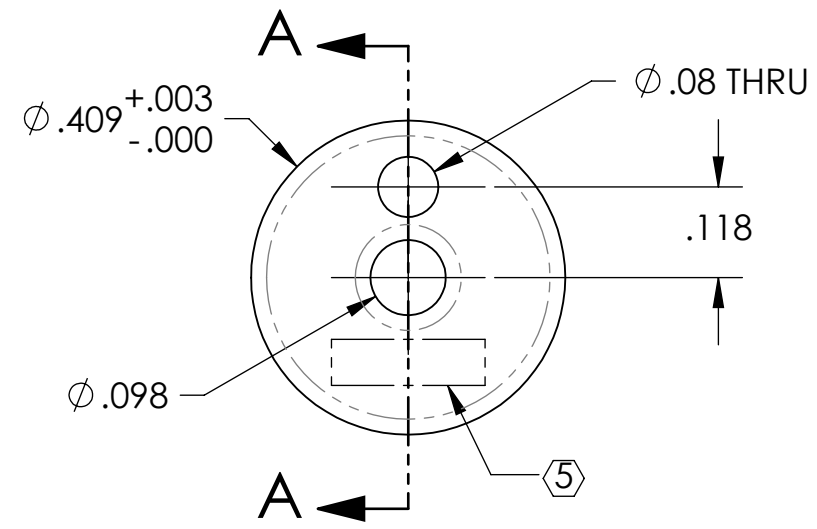
REV.	DATE	DCN #	DRAWING TREE #
v1	18 MAY 2010	E1000166	-
-	-	-	-
-	-	-	-



DETAIL B
SCALE 10 : 1



SECTION A-A



D1001698_Advanced_LIGO_SUS_HLTS_Magnet_Flag_BOSEM_PART_PDM_REV: X-000, DRAWING PDM REV:

NOTES AND TOLERANCES: (UNLESS OTHERWISE SPECIFIED)				LIGO CALIFORNIA INSTITUTE OF TECHNOLOGY MASSACHUSETTS INSTITUTE OF TECHNOLOGY		PART NAME	
DIMENSIONS ARE IN INCHES TOLERANCES: .XX ± .01 .XXX ± .005 ANGULAR ± 0.5°				1. INTERPRET DRAWING PER ASME Y14.5-1994. 2. REMOVE ALL SHARP EDGES, R.02 MIN. 3. DO NOT SCALE FROM DRAWING. 4. ALL MACHINING FLUIDS MUST BE FULLY SYNTHETIC, FULLY WATER SOLUBLE AND FREE OF SULFUR, SILICONE, AND CHLORINE.		MAGNET FLAG, BOSEM	
MATERIAL		FINISH		SYSTEM		SUB-SYSTEM	
6061-T6 Al		32 μinch		ADVANCED LIGO		SUS	
NEXT ASSY				DESIGNER		DATE	
MAGNET AND FLAG ASSY, BOSEM				D. BRIDGES		13 JUL 2010	
				DRAFTER		14 JUL 2010	
				CHECKER		16 JUL 2010	
				APPROVAL			
				SIZE		DWG. NO.	
				B		D1001698	
				REV.		v1	
				SCALE: 4:1		PROJECTION:	
						SHEET 1 OF 1	