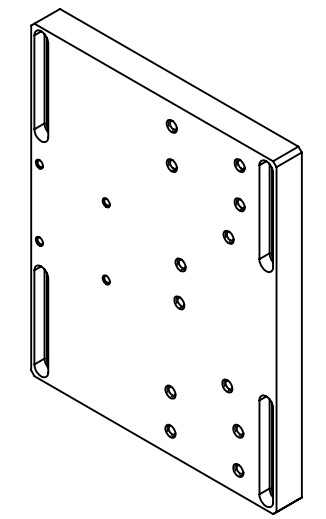
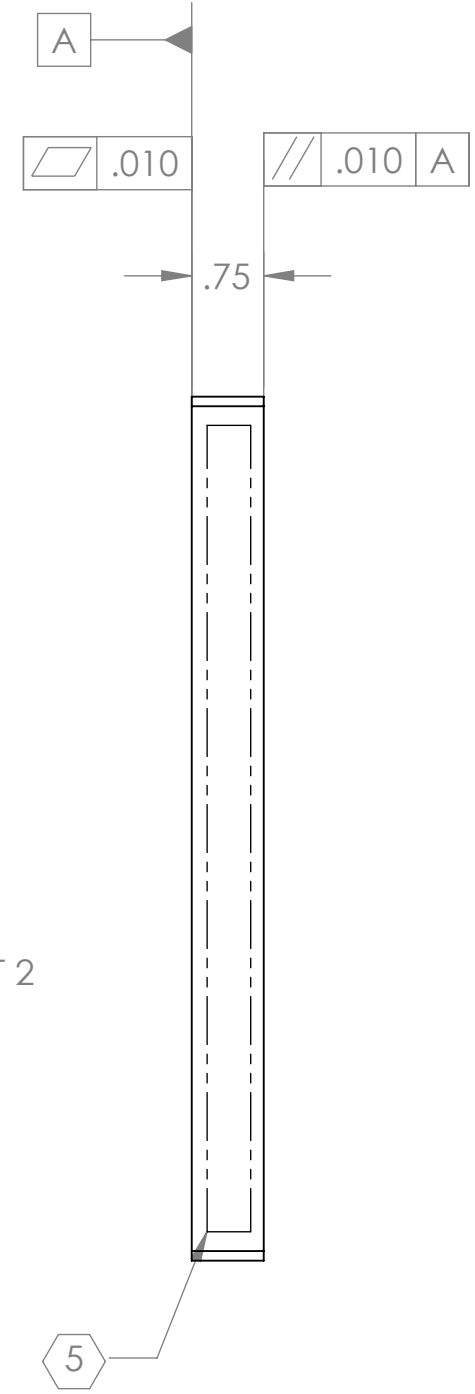
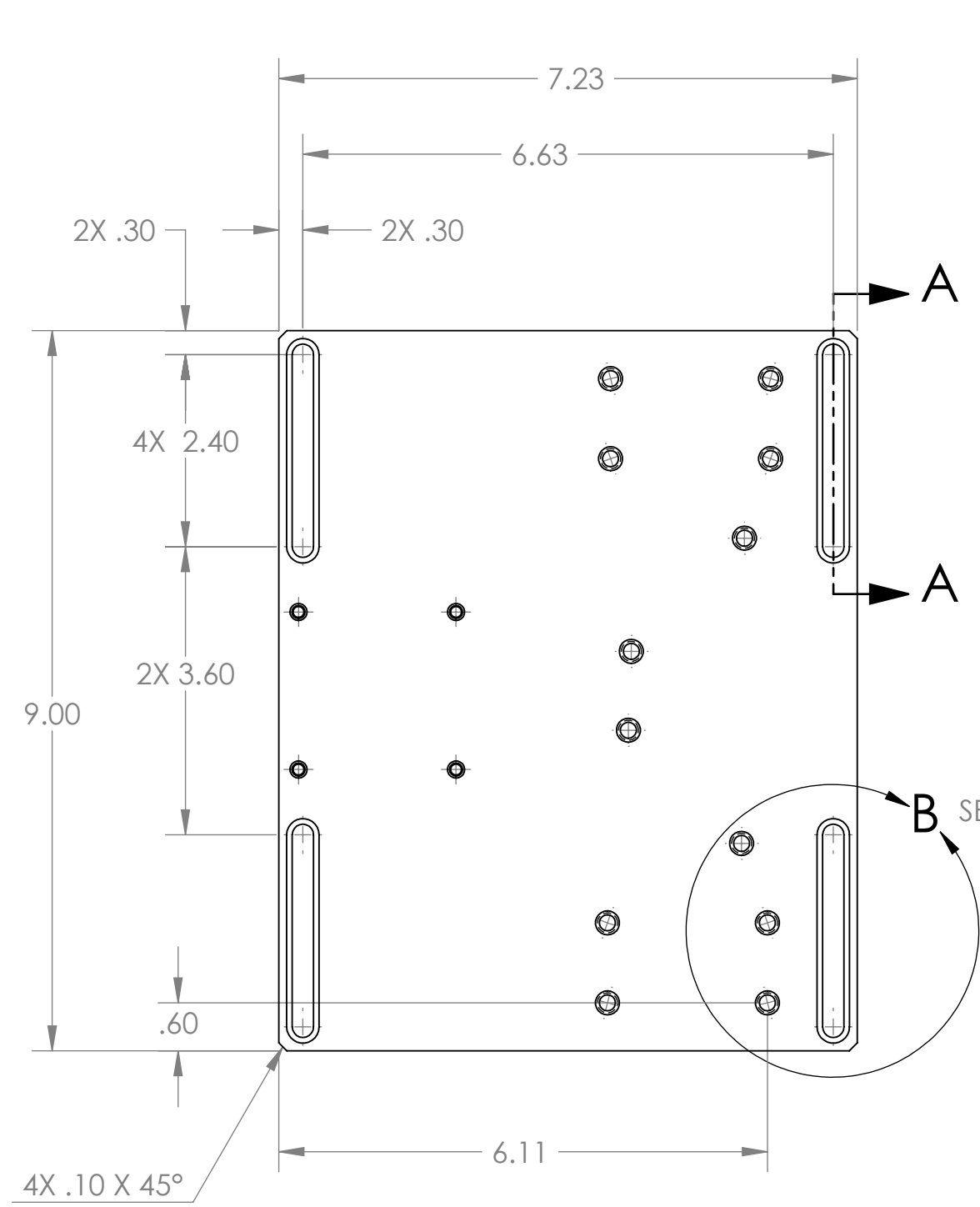


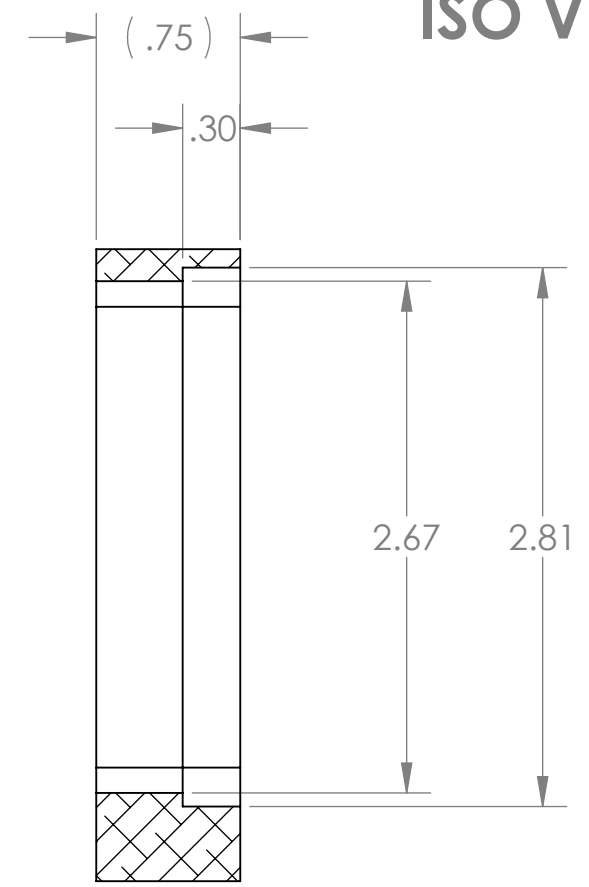
8 7 6 5 4 3 2 1

**NOTES CONTINUED:**  
 5. SCRIBE, ENGRAVE, OR MECHANICALLY STAMP (NO INKS OR DYES) DRAWING PART NUMBER, REVISION (AND VARIANT OR "TYPE" IF APPLICABLE) ON NOTED SURFACE OF PART FOLLOWED ON THE NEXT LINE WITH A THREE DIGIT SERIAL NUMBER. SERIAL NUMBERS START AT 001 FOR THE FIRST ARTICLE AND PROCEED CONSECUTIVELY. USE MINIMUM 0.12" HIGH CHARACTERS, UNLESS THE SIZE OF THE PART DICTATES SMALLER CHARACTERS. A VIBRATORY TOOL MAY BE USED.  
 EXAMPLE: DXXXXXX-VY, TYPE-XX, S/N XXX

REV.	DATE	DCN #	DRAWING TREE #
v1	19 AUG 2010	E1000182-v1	-
-	-	-	-
-	-	-	-



**ISO VIEW**



**SECTION A-A  
SCALE 1:1**

- 8. MACHINE ALL SURFACES TO REMOVE OXIDES AND MILL FINISH, USE OF ABRASIVE TECHNIQUES IS NOT ALLOWED.
- 7. DO NOT USE SANDPAPER, SCOTCH BRITE OR SIMILAR PRODUCTS.
- 6. ALL PARTS SHALL BE MANUFACTURED IN ACCORDANCE WITH LIGO SPECIFICATION E0900364.

NOTES AND TOLERANCES: (UNLESS OTHERWISE SPECIFIED)	
DIMENSIONS ARE IN INCHES	1. INTERPRET DRAWING PER ASME Y14.5-1994.
TOLERANCES:	2. REMOVE ALL SHARP EDGES, R.02 MIN.
.XX ± .01	3. DO NOT SCALE FROM DRAWING.
.XXX ± .005	4. ALL MACHINING FLUIDS MUST BE FULLY SYNTHETIC, FULLY WATER SOLUBLE AND FREE OF SULFUR, SILICONE, AND CHLORINE.
ANGULAR ± 1.0°	
MATERIAL	6061-T6 Al
FINISH	N/A μinch

CALIFORNIA INSTITUTE OF TECHNOLOGY MASSACHUSETTS INSTITUTE OF TECHNOLOGY		PART NAME <b>ALIGO AOS          OPLEV MOUNTING PLATE (HAM)</b>	
SYSTEM	ADVANCED LIGO	SUB-SYSTEM	AOS
DESIGNER	C. CONLEY 07 MAY 2009	SIZE	DWG. NO.
DRAFTER	N. KILPATRICK 19 AUG 2010	B	D1001627
CHECKER		REV.	v1
APPROVAL		SCALE: 1:2	PROJECTION:
		SHEET 1 OF 2	

D1001627 alIGO AOS Oplev Mounting Plate (HAM), PART PDM REV: X-011, DRAWING PDM REV: X-005

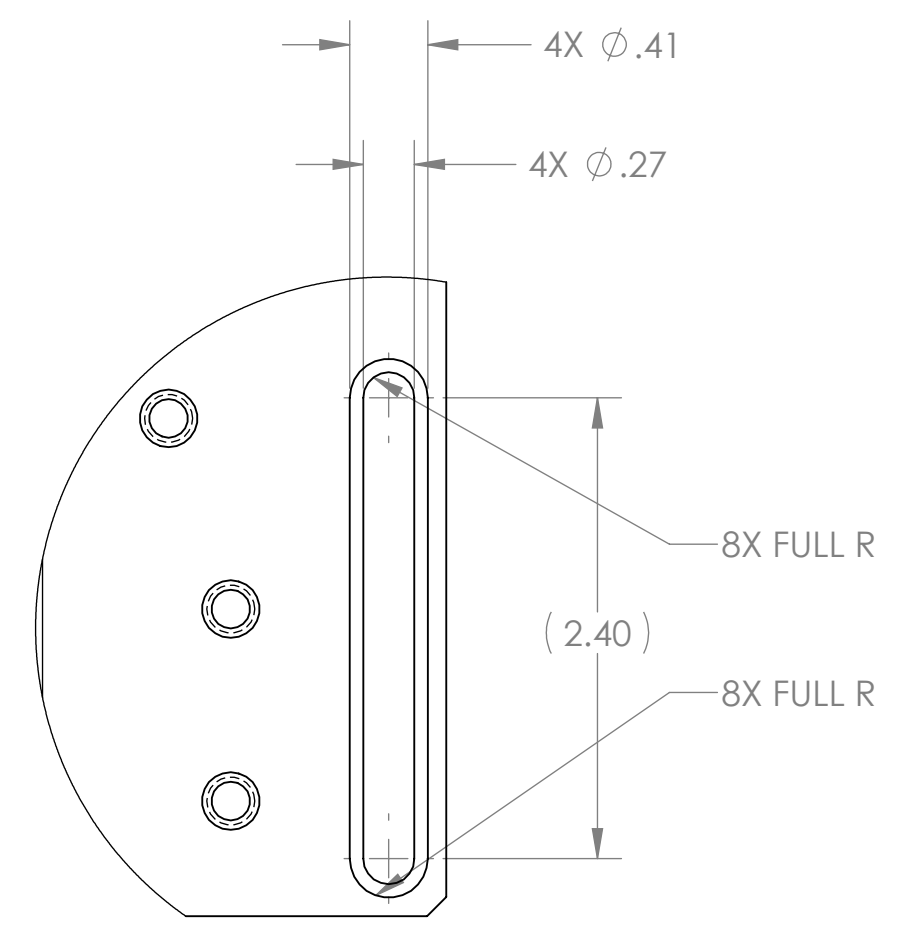
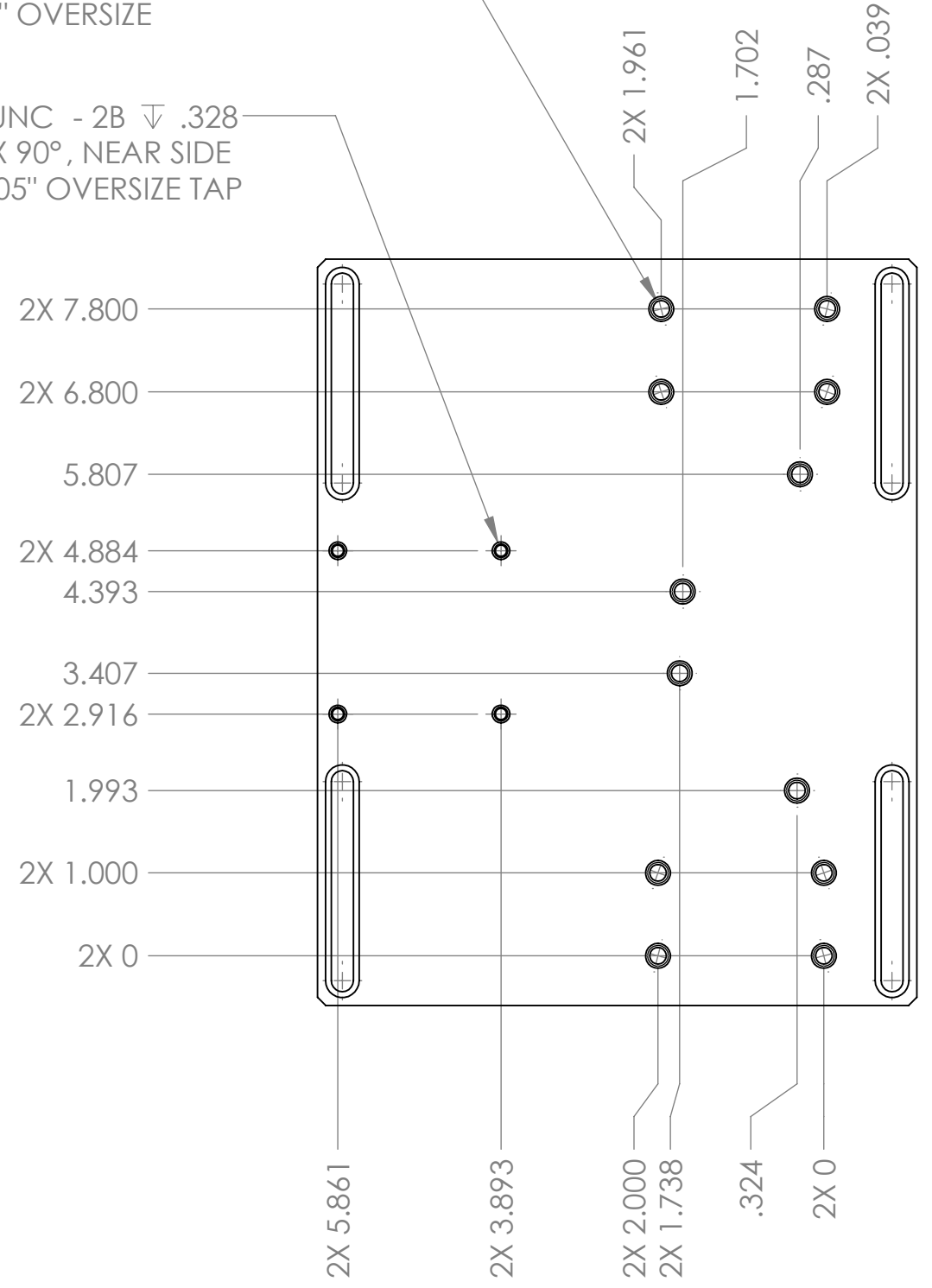
8 7 6 5 4 3 2 1

D1001627 dLIGO AOS Oplev Mounting Plate (HAM), PART PDM REV: X-011, DRAWING PDM REV: X-005

8 7 6 5 4 3 2 1

12X 1/4-20 UNC - 2B THRU  
∠  $\phi$  .300 X 90°, NEAR SIDE  
+.005" OVERSIZE

4X 8-32 UNC - 2B  $\nabla$  .328  
∠  $\phi$  .214 X 90°, NEAR SIDE  
+.005" OVERSIZE TAP



DETAIL B  
SCALE 1 : 1

**LIGO** CALIFORNIA INSTITUTE OF TECHNOLOGY  
MASSACHUSETTS INSTITUTE OF TECHNOLOGY

SIZE	DWG. NO.	REV.
B	D1001627	v1
SCALE: 1:2	PROJECTION:	SHEET 2 OF 2

8 7 6 5 4 3 2 1