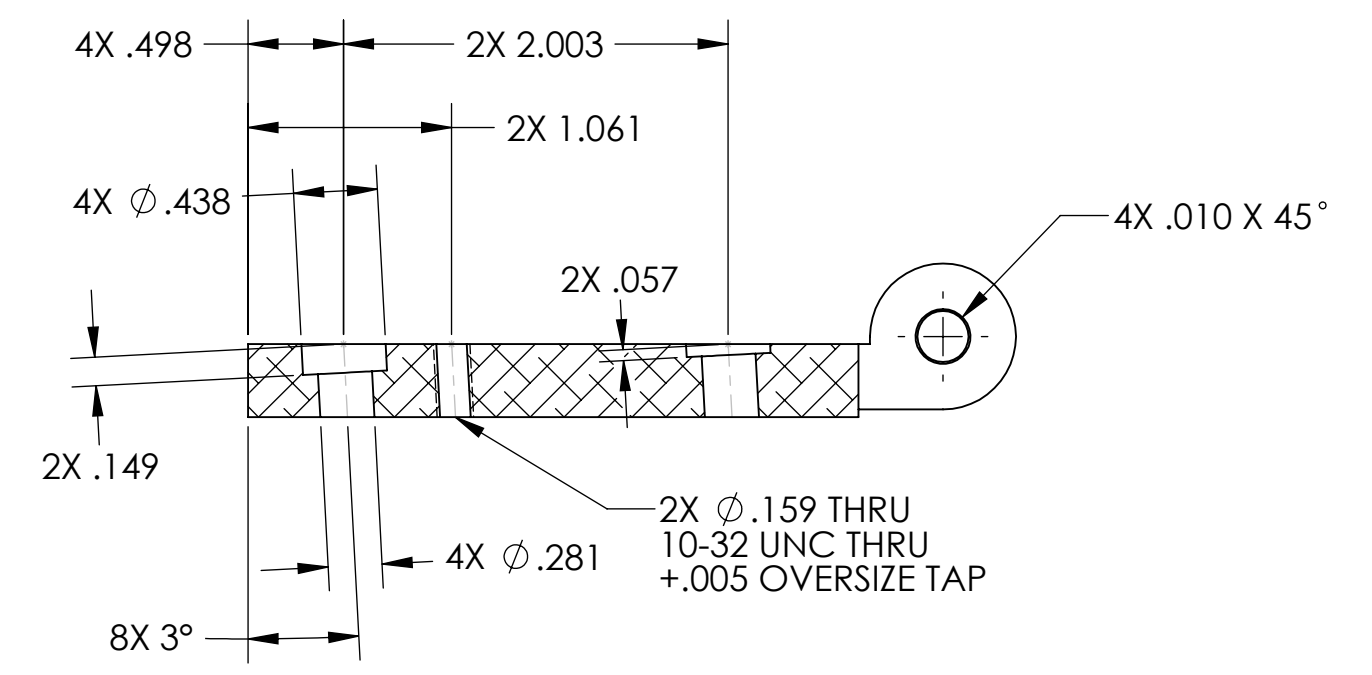
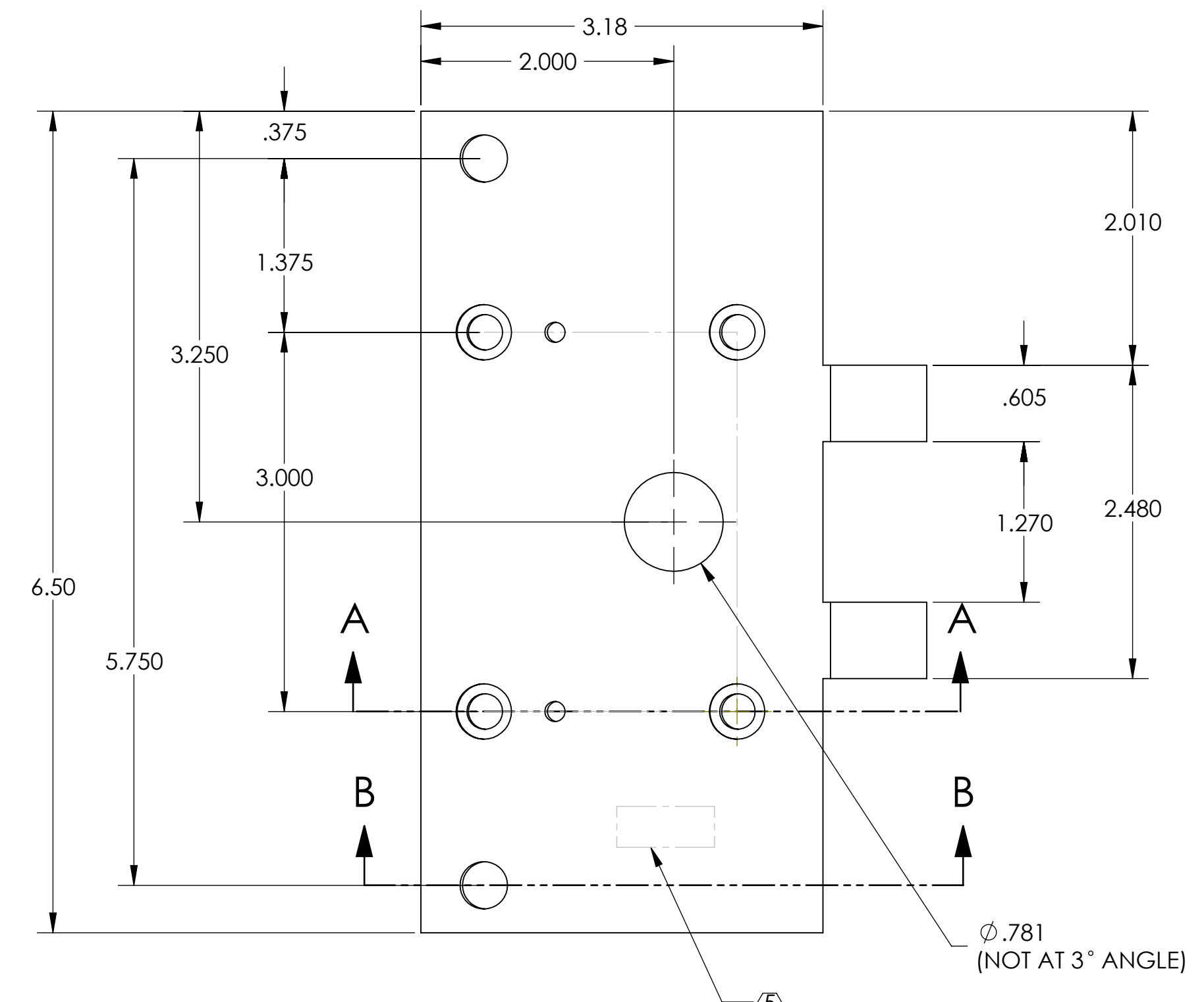
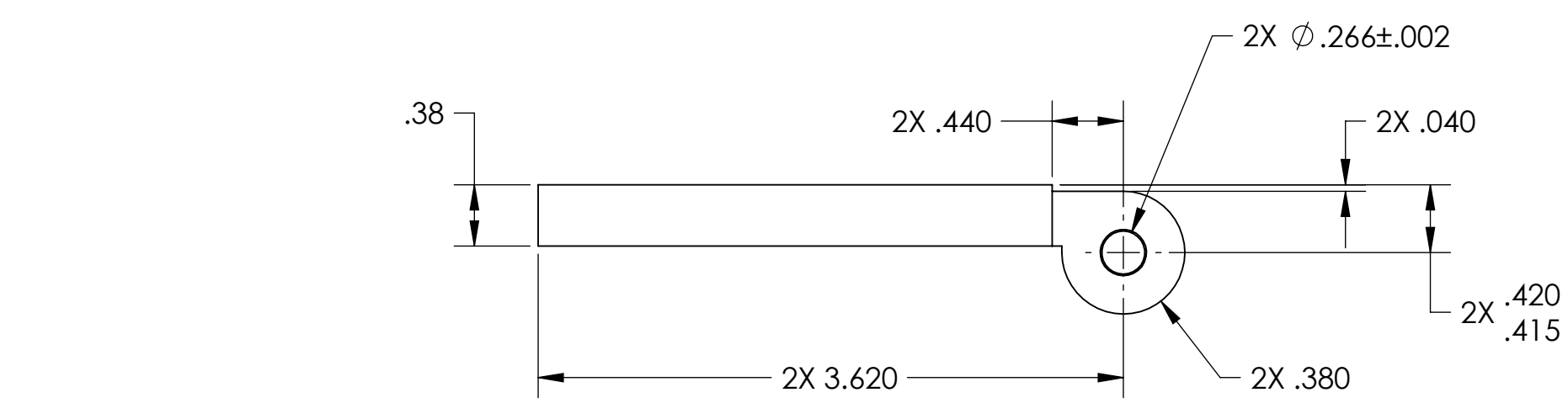
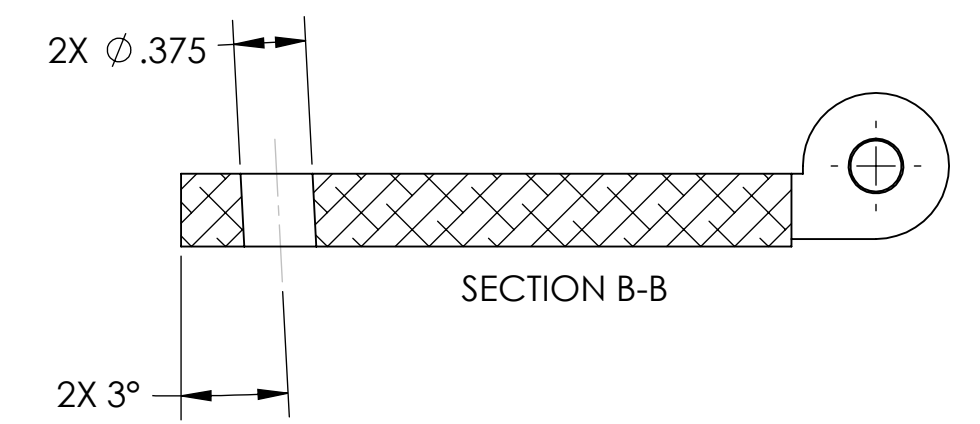


- NOTES: UNLESS OTHERWISE SPECIFIED**
1. INTERPRET DRAWING PER ASME Y14.5-1994.
 2. REMOVE ALL SHARP EDGES 0.005" TO 0.015".
 3. DO NOT SCALE FROM DRAWING.
 4. ALL MACHINING FLUIDS MUST BE FULLY SYNTHETIC, FULLY WATER SOLUBLE AND FREE OF SULFUR, SILICONE, AND CHLORINE. REFER TO LIGO E0900237 FOR LIST OF APPROVED COOLANTS.
 5. SCRIBE, ENGRAVE (A VIBRATORY TOOL MAY BE USED), LASER MARK OR MECHANICALLY STAMP (NO INKS OR DYES) DRAWING PART NUMBER, REVISION (AND VARIANT OR "TYPE" IF APPLICABLE) ON NOTED SURFACE OF PART FOLLOWED ON THE NEXT LINE WITH A THREE DIGIT SERIAL NUMBER. SERIAL NUMBERS START AT 001 FOR THE FIRST ARTICLE AND PROCEED CONSECUTIVELY. USE MINIMUM 0.12" HIGH CHARACTERS, UNLESS THE SIZE OF THE PART DICTATES SMALLER CHARACTERS.
EXAMPLE: DXXXXXX-VY, TYPE-XX, S/N XXX
 6. APPROXIMATE WEIGHT = 0.784 LB.
 7. MACHINE ALL SURFACES TO REMOVE OXIDES AND MILL FINISH, USE OF ABRASIVE REMOVAL TECHNIQUES IS NOT ALLOWED. REFER TO LIGO-E0900364.
 8. ALL PARTS SHALL BE MANUFACTURED IN ACCORDANCE WITH LIGO SPECIFICATION E0900364.
 9. ALL MATERIAL IS TO BE VIRGIN MATERIAL (i.e. NO WELD REPAIRS, PLUGS OR RECYCLED MATERIAL). NO REPAIRS SHALL BE MADE UNLESS APPROVED IN ADVANCE, AND IN WRITING, BY LIGO LABORATORY. REFER TO LIGO-E0900364.

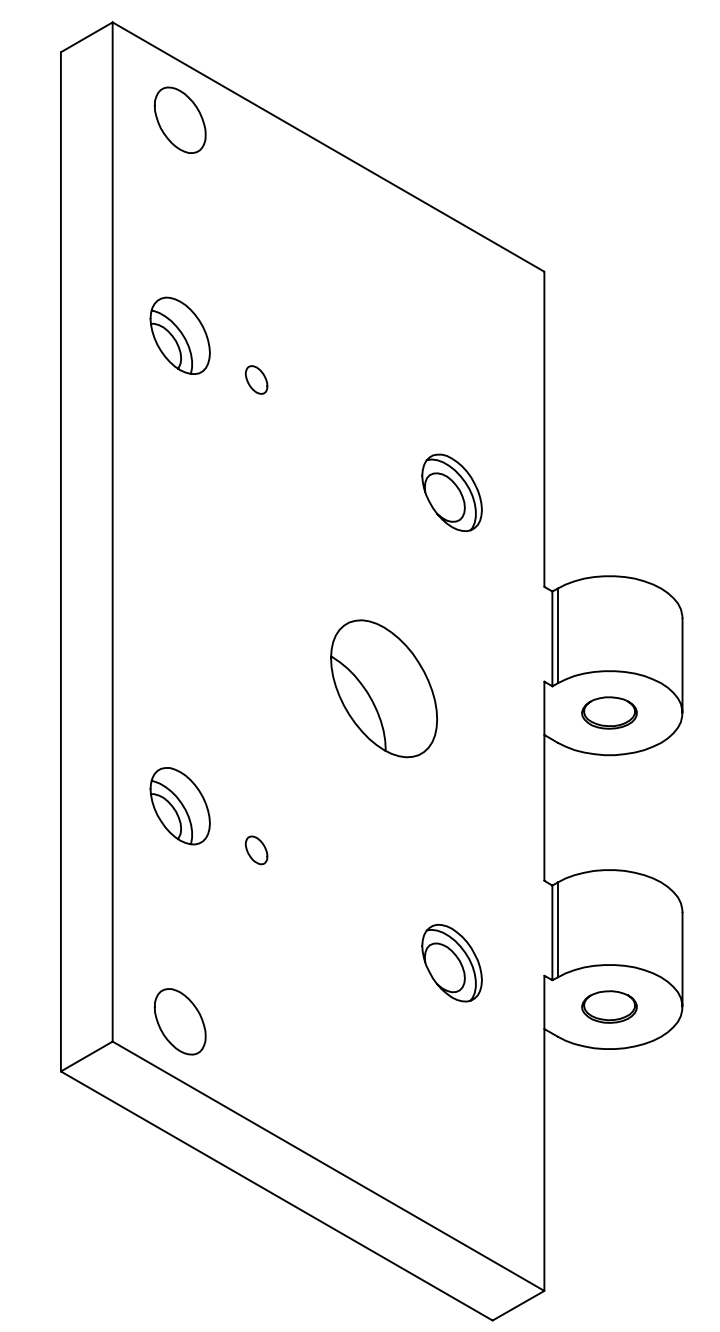
REV.	DATE	DCN #	DRAWING TREE #
v1	10 AUG 2010	E1000285	-
v2	07 APR 2011	E1100216	-
v3	08 JUL 2011	E1100335	-



SECTION A-A



SECTION B-B



iso view

DIMENSIONS ARE IN INCHES		SEE TOP LEFT FOR NOTES		CALIFORNIA INSTITUTE OF TECHNOLOGY MASSACHUSETTS INSTITUTE OF TECHNOLOGY		PART NAME		
TOLERANCES: .XX ± .01 .XXX ± .005		MATERIAL		FINISH		ADVANCED LIGO AOS		ARM CAVITY BAFFLE UPPER MOUNTING HINGE
ANGULAR ± 0.5°		6061-T6 Al		63 μinch		DESIGNER: N.Nguyen DRAFTER: TQ. NGUYEN CHECKER: M. SMITH APPROVAL: D. COYNE		DWG. NO. D1001621 REV. v3
				NEXT ASSY		DESIGNER: N.Nguyen DRAFTER: TQ. NGUYEN CHECKER: M. SMITH APPROVAL: D. COYNE		SCALE: 1:1 PROJECTION:
				D1002173		SIZE: 12 AUG 2010 DATE: 18 OCT 2010 DATE: 10 NOV 2010 DATE: 20 NOV 2010		SHEET 1 OF 1

D1001621_AudiGO_AOS_ARM_Baffle Upper Mounting Hinge. PART PDM REV: X.01B. DRAWING PDM REV: X.019