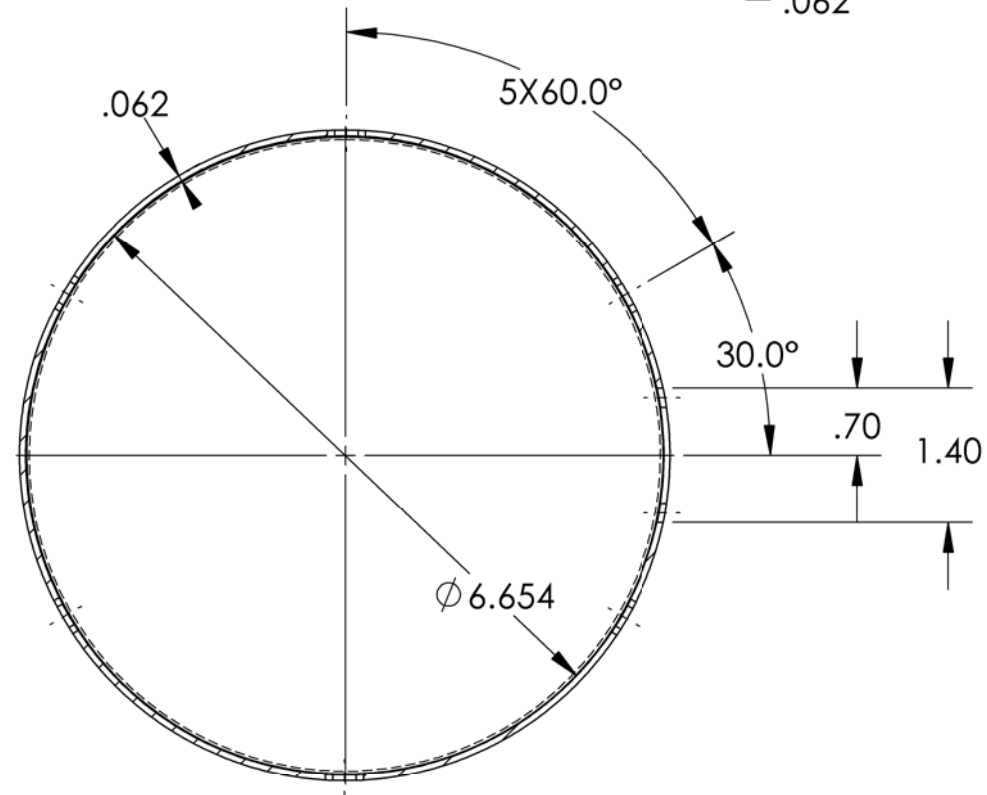
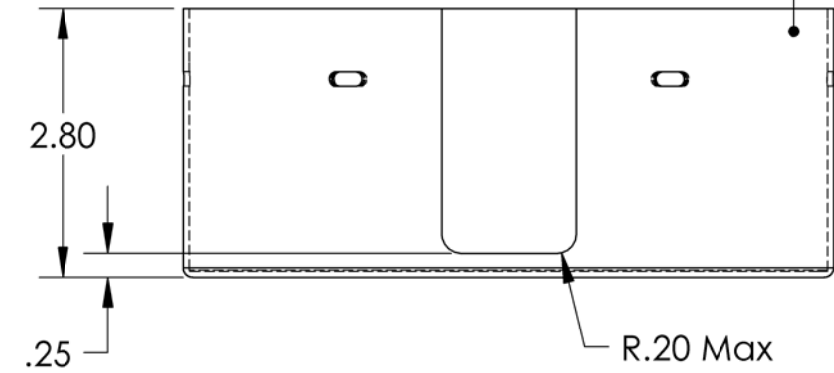
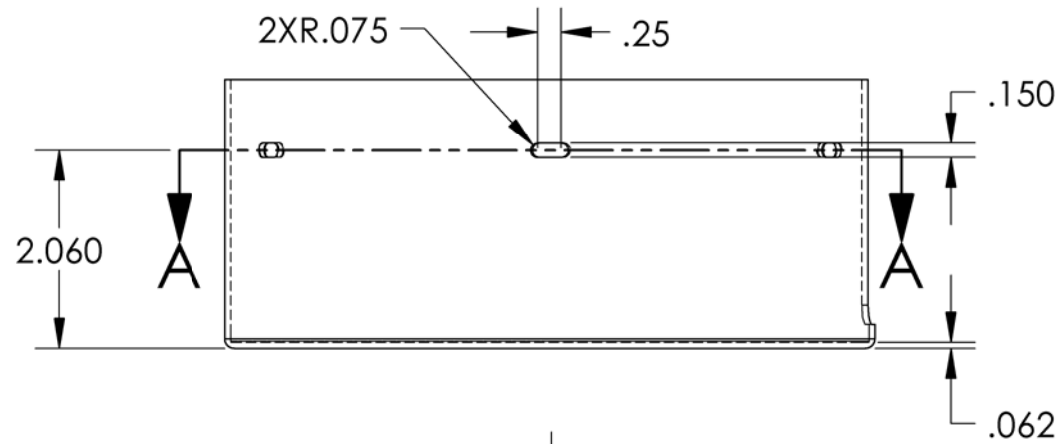
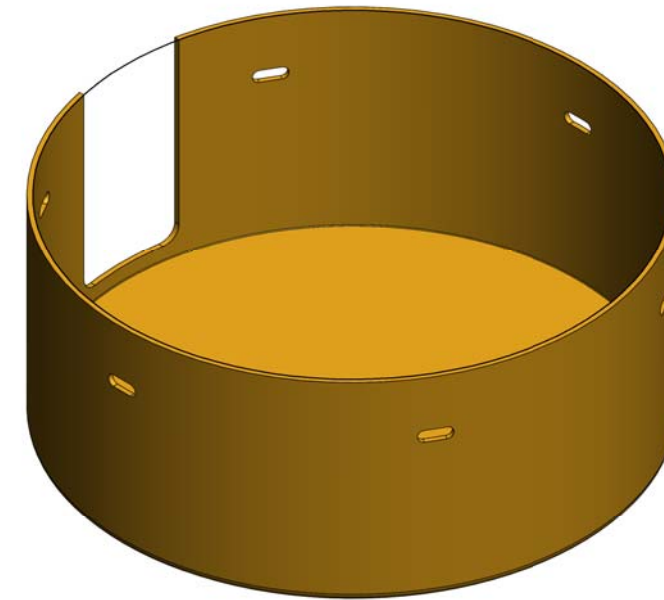


NOTES CONTINUED:  
 5. SCRIBE, ENGRAVE, OR MECHANICALLY STAMP (NO INKS OR DYES) DRAWING PART NUMBER, REVISION (AND VARIANT OR "TYPE" IF APPLICABLE) ON NOTED SURFACE OF PART FOLLOWED ON THE NEXT LINE WITH A THREE DIGIT SERIAL NUMBER. SERIAL NUMBERS START AT 001 FOR THE FIRST ARTICLE AND PROCEED CONSECUTIVELY. USE MINIMUM 0.12" HIGH CHARACTERS, UNLESS THE SIZE OF THE PART DICTATES SMALLER CHARACTERS. A VIBRATORY TOOL MAY BE USED.  
 EXAMPLE: DXXXXXX-VY, TYPE-XX, S/N XXX  
 6. APPROXIMATE WEIGHT = 1.75 LB.

REV.	DATE	DCN #	DRAWING TREE #
V1	14 JUNE 2010	E1000229	-
V2	22 NOV 2010	E1000824	-
-	-	-	-



SECTION A-A



NOTES AND TOLERANCES: (UNLESS OTHERWISE SPECIFIED)	
DIMENSIONS ARE IN INCHES	
1. INTERPRET DRAWING PER ASME Y14.5-1994.	
2. REMOVE ALL SHARP EDGES, R.02 MIN.	
3. DO NOT SCALE FROM DRAWING.	
4. ALL MACHINING FLUIDS MUST BE FULLY SYNTHETIC, FULLY WATER SOLUBLE AND FREE OF SULFUR, SILICONE, AND CHLORINE.	
TOLERANCES: .XX ± .015 .XXX ± .005	
ANGULAR ± 0.1°	
MATERIAL CO-NETIC AA	FINISH 32 μinch

CALIFORNIA INSTITUTE OF TECHNOLOGY MASSACHUSETTS INSTITUTE OF TECHNOLOGY		PART NAME Top Hat MuMetal - Magnetically Shielded	
SYSTEM ADVANCED LIGO	SUB-SYSTEM SEI	DESIGNER S.BISCANS	DATE 14 JUNE 2010
NEXT ASSY D1001525	CHECKER F.MATICHARD	DATE 22 JUNE 2010	SIZE B
APPROVAL K.MASON	DATE 22 JUNE 2010	DWG. NO. D1001535	REV. v2
SCALE: 1:2		PROJECTION:	
SHEET 1 OF 1			

D1001535 GS13 Top Hat MuMetal - Magnetically Shielded, PART PDM REV: X-017, DRAWING PDM REV: X-017