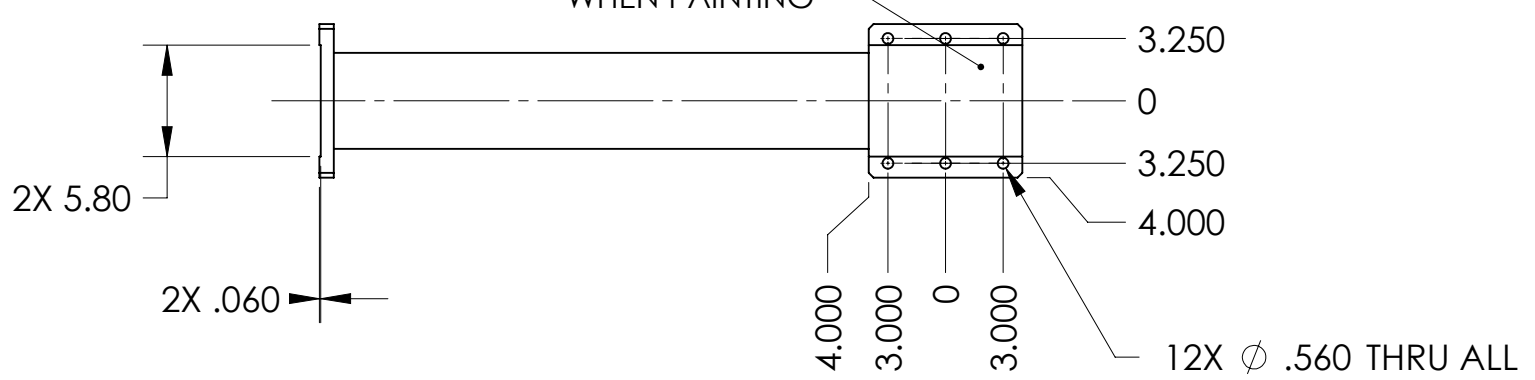
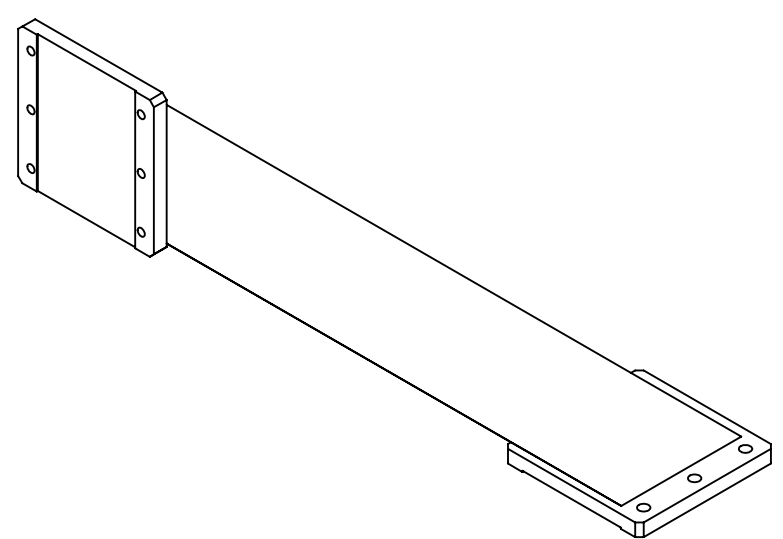
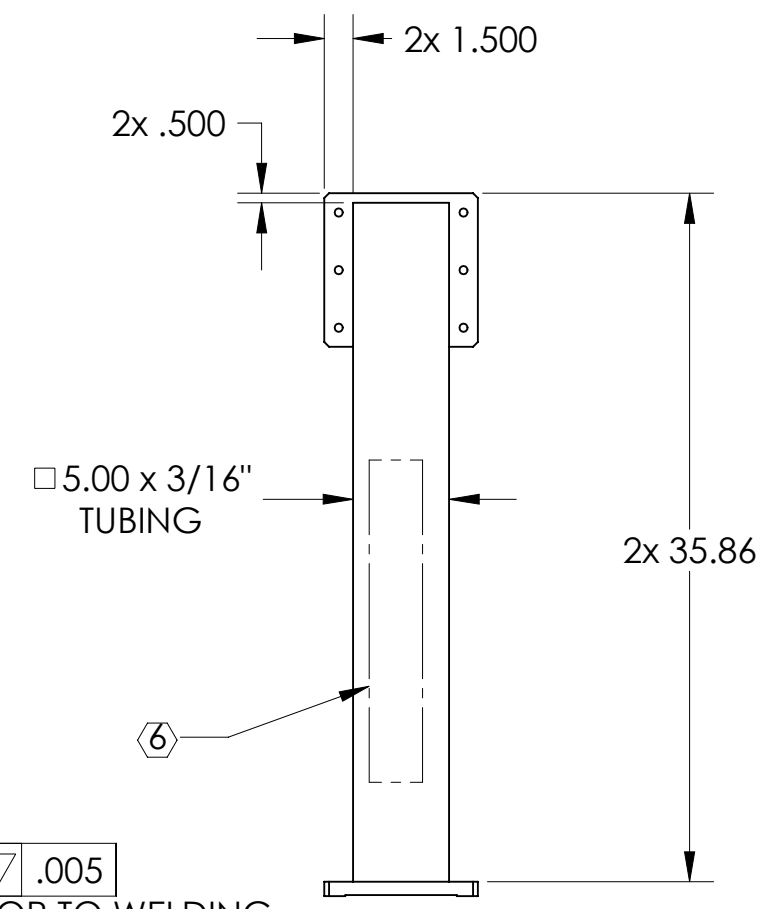
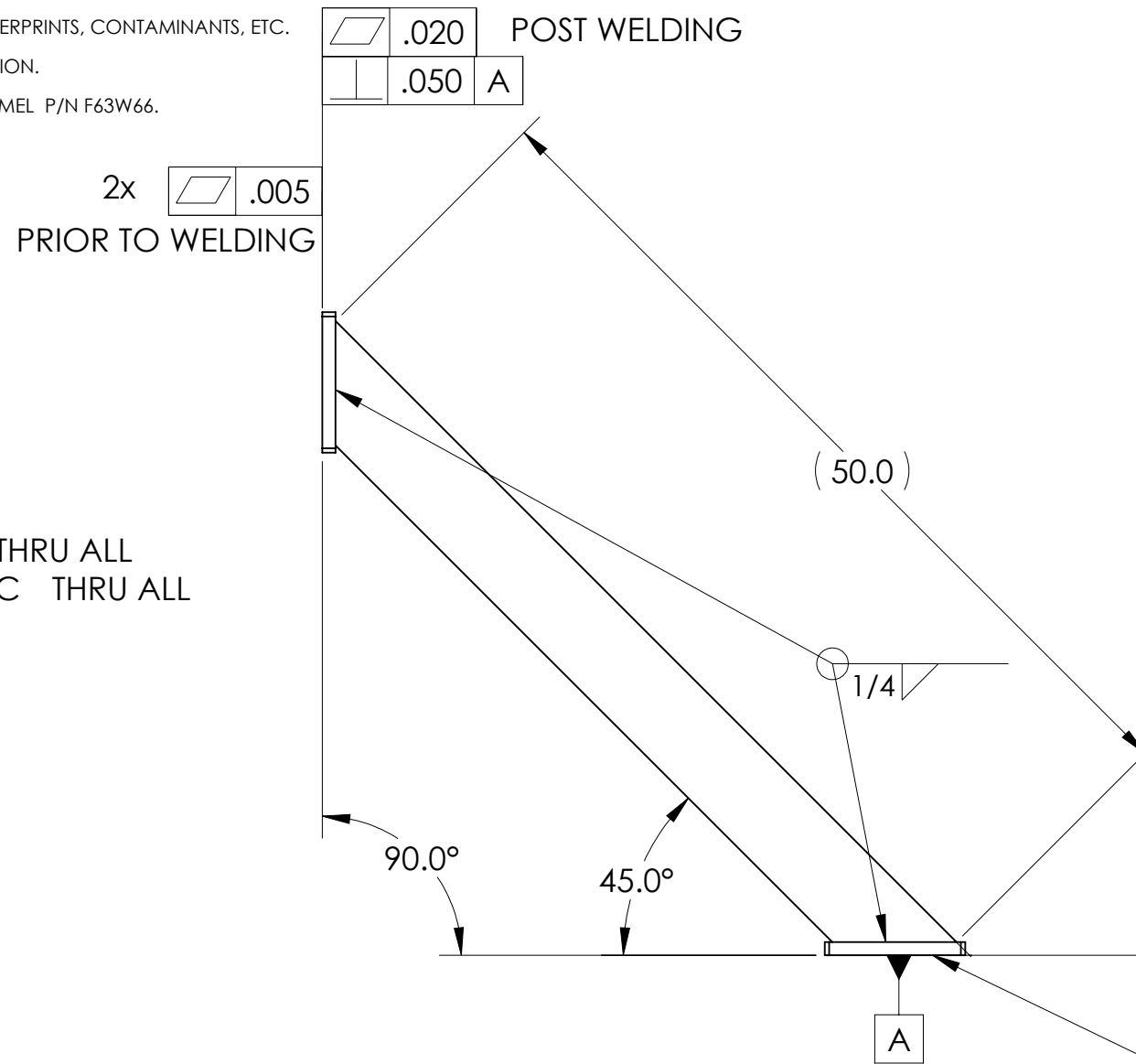
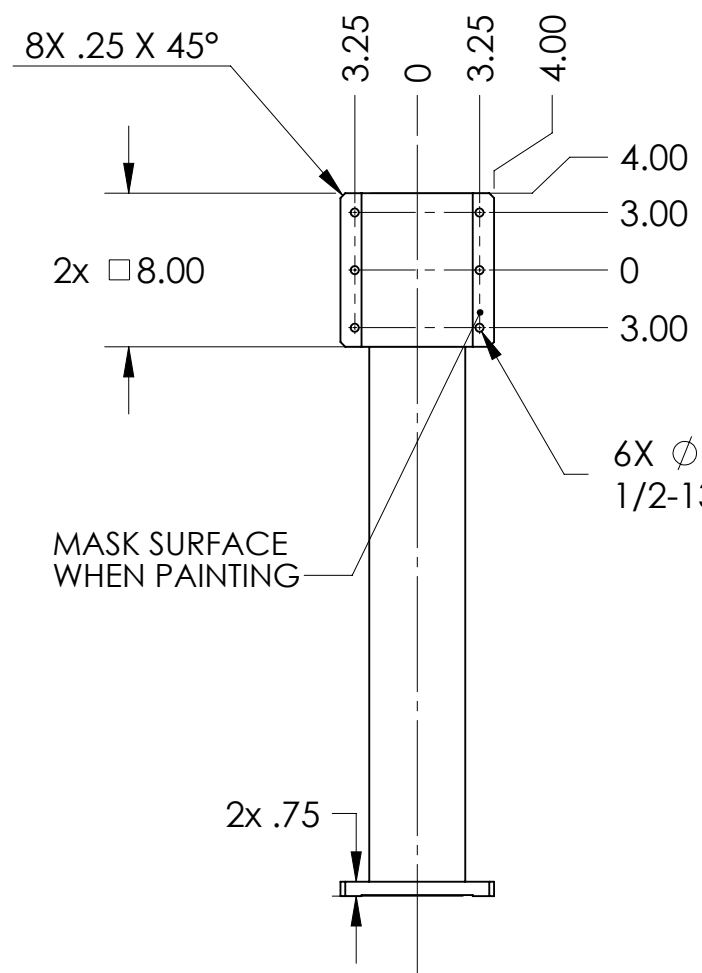


8 7 6 5 4 3 2 1

NOTES CONTINUED:

- 5. TUBE: **ASTM A500** Grade B, PLATE: **A36** STEEL
- 6. PART NUMBER (DRAWING NO. PLUS REVISION) TO BE CLEARLY MARKED ON THE PART NEAR LOCATION SHOWN
EXAMPLE: **D1001462-V1** (~ 1" CHARACTERS)
- 7. BEFORE FINISHING REMOVE ALL: MILL SCALE, OXYDATION, GREASE, OIL, DIRT, FINGERPRINTS, CONTAMINANTS, ETC.
- 8. PRIME WITH SHERWIN WILLIAMS INDUSTRIAL WASH PRIMER "**P60G2**" PER SPECIFICATION.
- 9. PAINT SMOOTH WHITE, SHERWIN WILLIAMS "**POLANE HS-PLUS**" POLYURETHANE ENAMEL P/N F63W66.

REV.	DATE	DCN #	DRAWING TREE #
V1	OCT 22 2010	E1000614	-
-	-	-	-
-	-	-	-



~53.82 lb

NOTES AND TOLERANCES: (UNLESS OTHERWISE SPECIFIED)				LIGO		PART NAME	
DIMENSIONS ARE IN INCHES TOLERANCES: .XX ± .05 .XXX ± .012 ANGULAR ± .5°				CALIFORNIA INSTITUTE OF TECHNOLOGY MASSACHUSETTS INSTITUTE OF TECHNOLOGY		External Stand Angled Support, HAM-ISI Fixture	
1. INTERPRET DRAWING PER ASME Y14.5-1994. 2. REMOVE ALL SHARP EDGES, R.02 MIN. 3. DO NOT SCALE FROM DRAWING. 4. ALL MACHINING FLUIDS MUST BE FULLY SYNTHETIC, FULLY WATER SOLUBLE AND FREE OF SULFUR, SILICONE, AND CHLORINE.				SYSTEM ADVANCED LIGO		SUB-SYSTEM SEI	
MATERIAL SEE NOTES				FINISH 128 μinch		NEXT ASSY D1001492	
DESIGNER SBARNUM		1 OCT 2010		SIZE DWG. NO. B		REV. v1	
DRAFTER sbarnum		7 OCT 2010		SCALE: 1:10		PROJECTION:	
CHECKER FMATCHARD		19 OCT 2010		SHEET 1 OF 1		APPROVAL KMASON	
APPROVAL KMASON		22 OCT 2010		SCALE: 1:10		PROJECTION:	

D1001461 External Stand Angled Support, HAM-ISI Fixture, PART PDM REV: X-002, DRAWING PDM REV: X-001

8 7 6 5 4 3 2 1