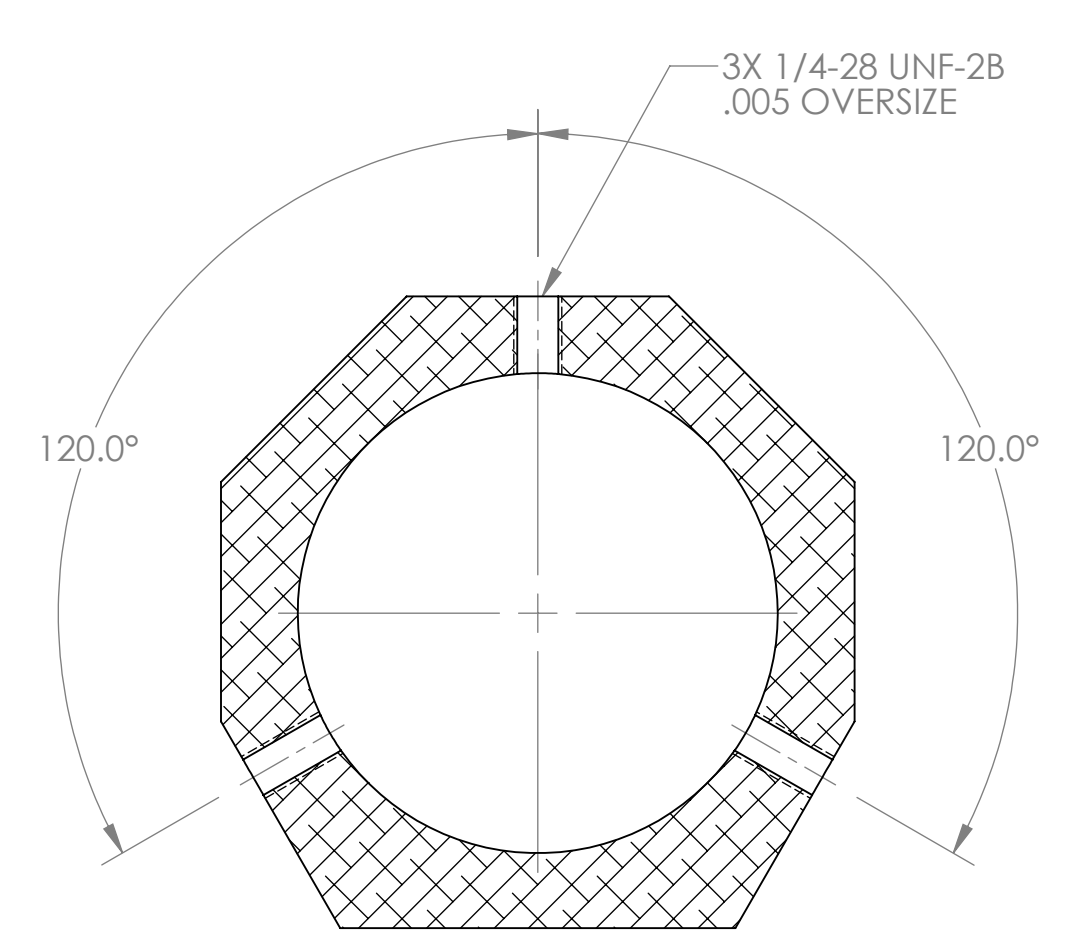
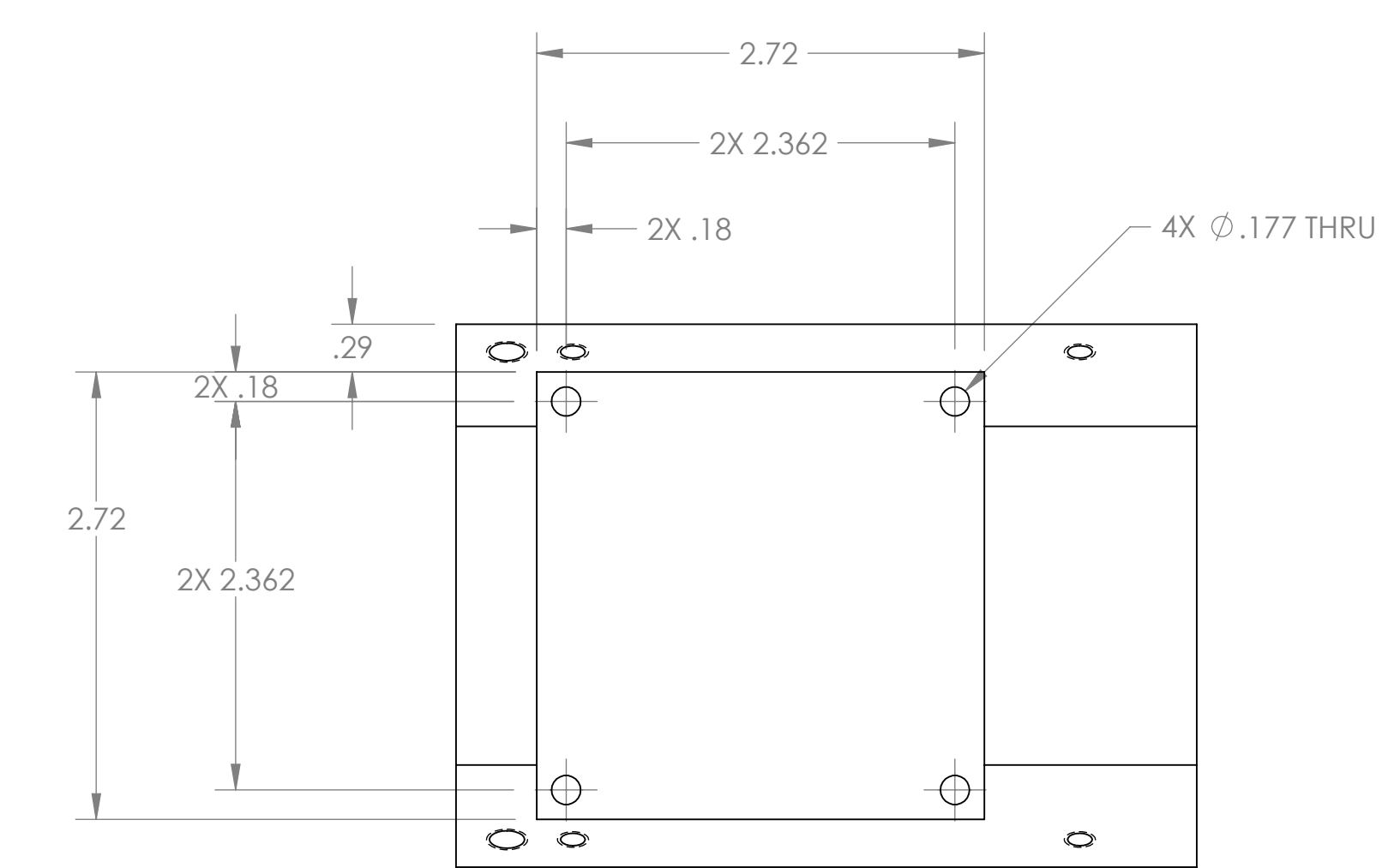
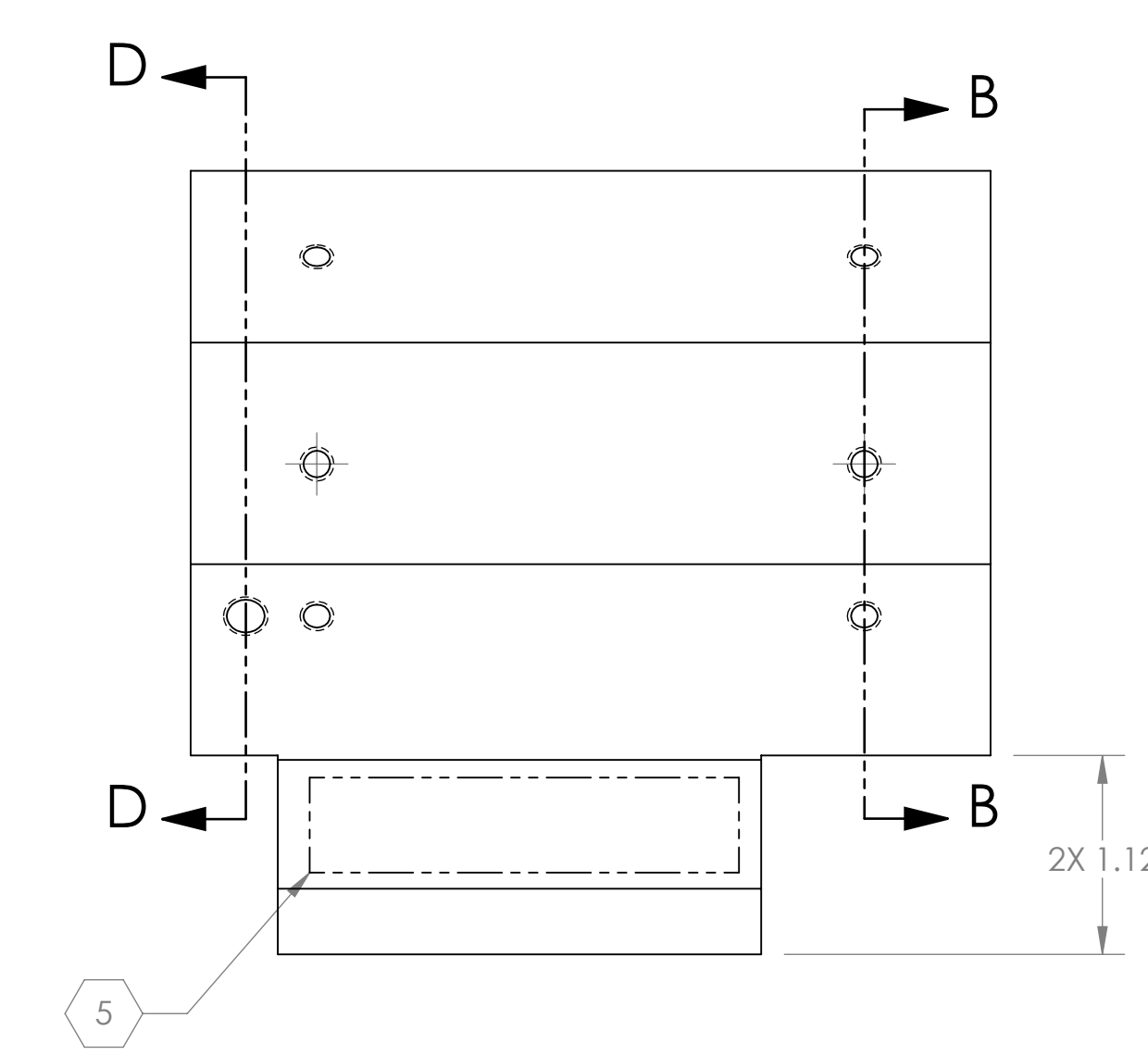
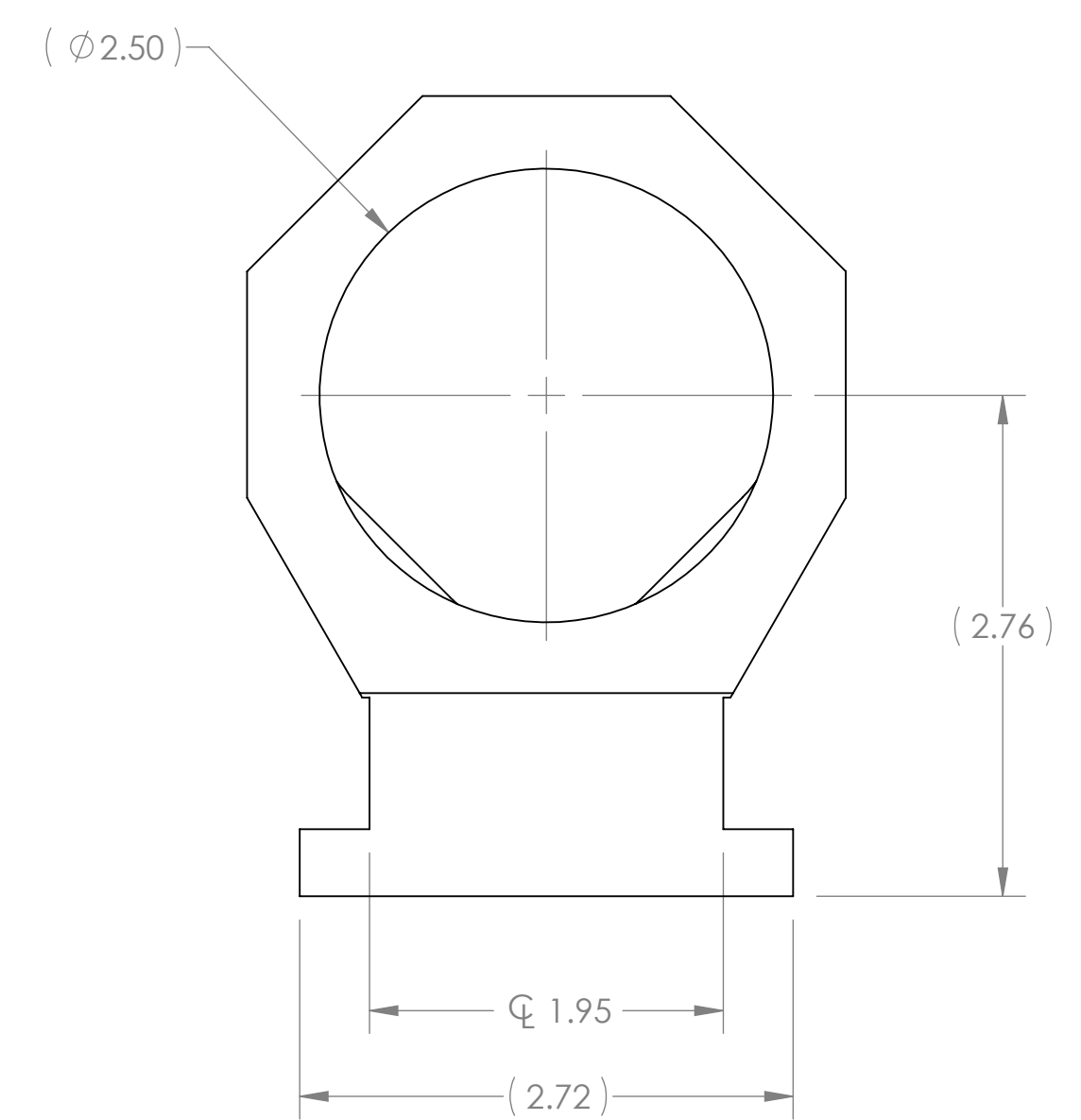
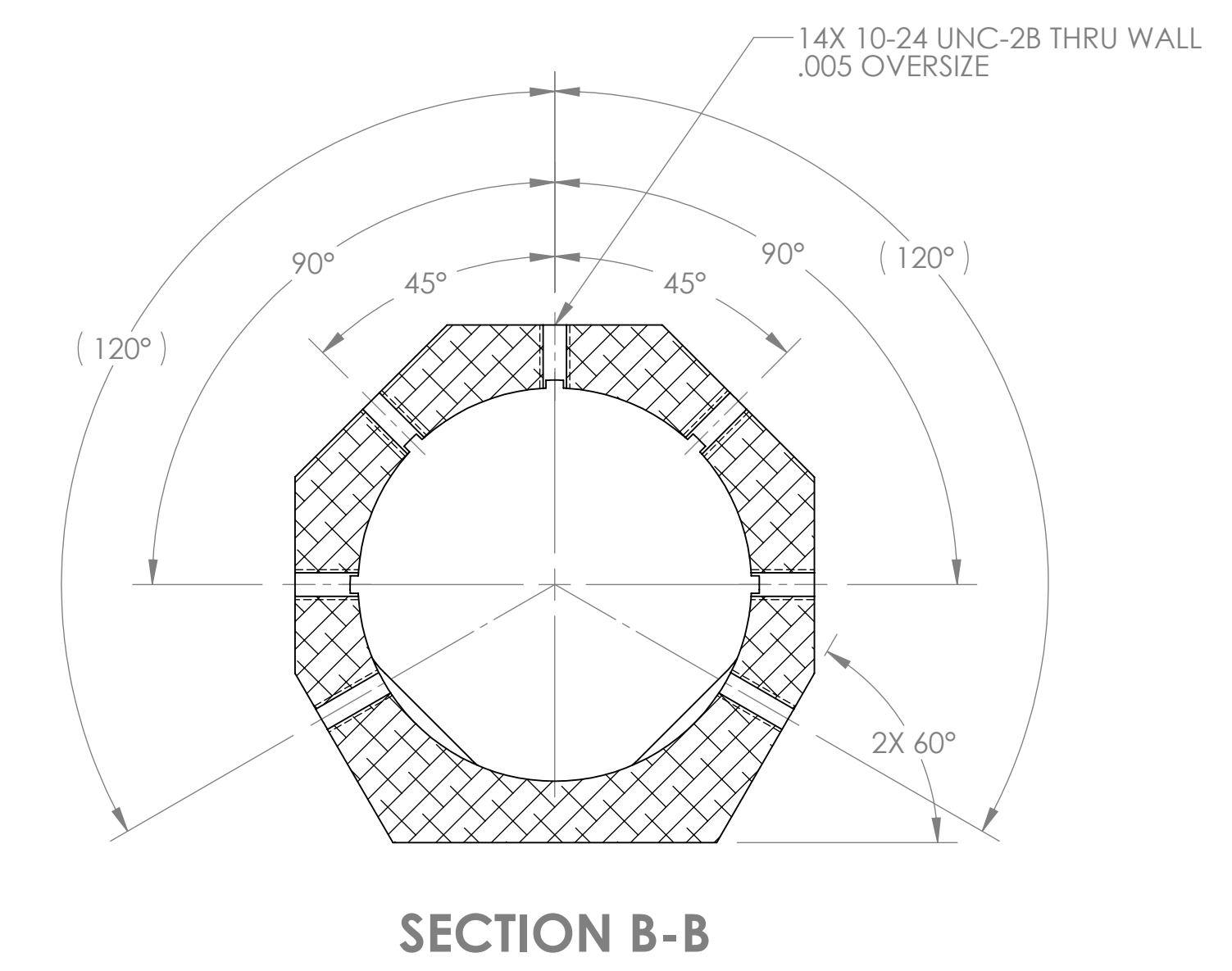
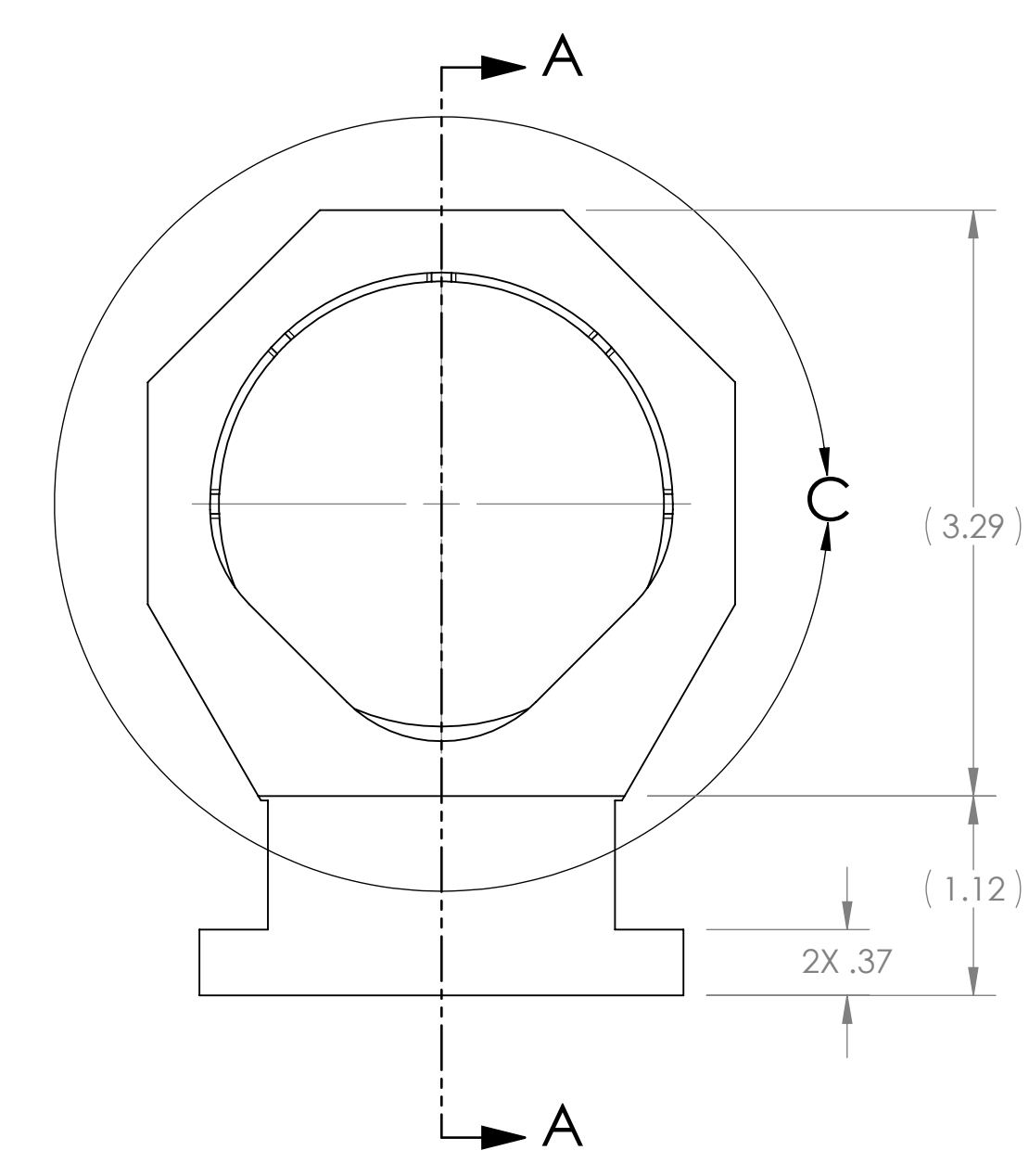
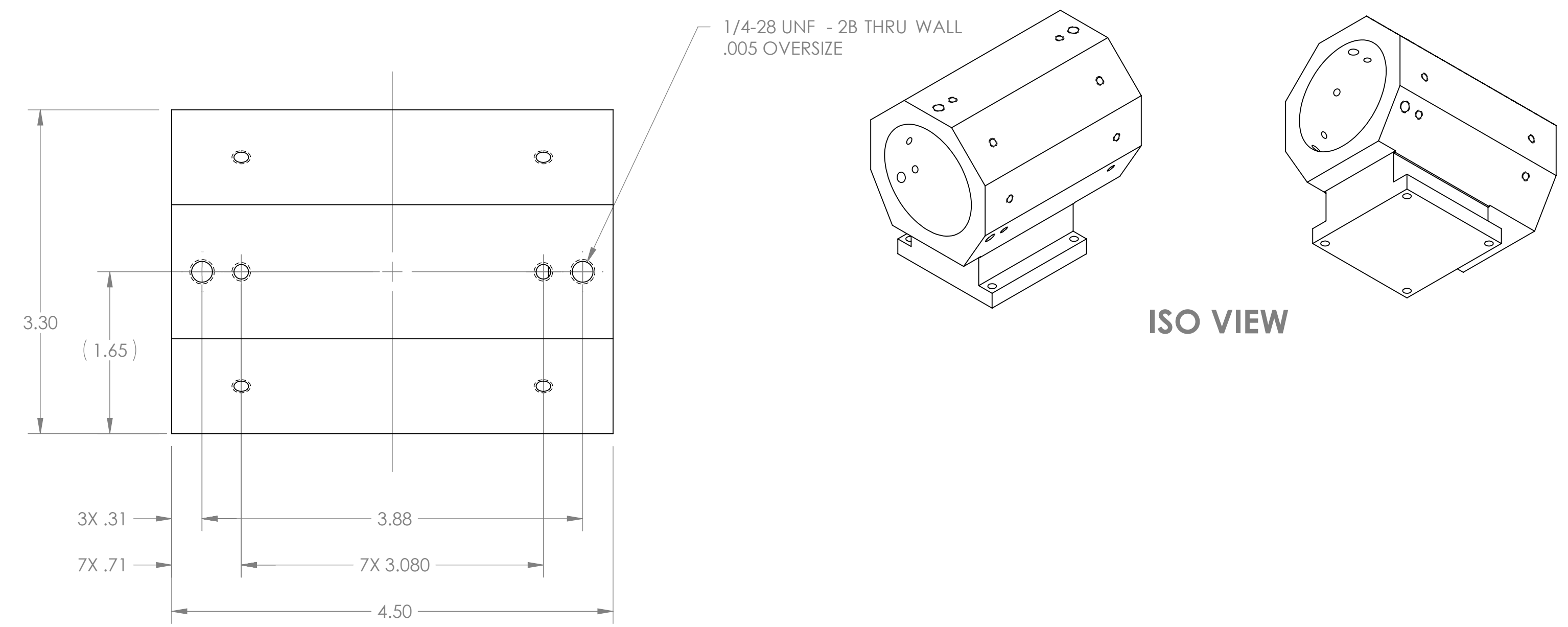


NOTES CONTINUED:
 ⑤ SCRIBE, ENGRAVE, OR MECHANICALLY STAMP (NO INKS OR DYES) DRAWING PART NUMBER, REVISION (AND VARIANT OR TYPE IF APPLICABLE ON NOTED SURFACE OR PART FOLLOWED ON THE NEXT LINE WITH A THREE DIGIT SERIAL NUMBER. SERIAL NUMBERS START AT 001 FOR THE FIRST ARTICLE AND PROCEED CONSECUTIVELY. USE MINIMUM 0.12" HIGH CHARACTERS UNLESS THE SIZE OF THE PART DICTATES SMALLER CHARACTERS. EXAMPLE: DXXXXXX-VY, TYPE-XX, S/N XXX. A VIBRATORY TOOL MAY BE USED.

REV.	DATE	DCN #	DRAWING TREE #
v1	07 JUNE 2010	E1000182-v1	-
-	-	-	-
-	-	-	-



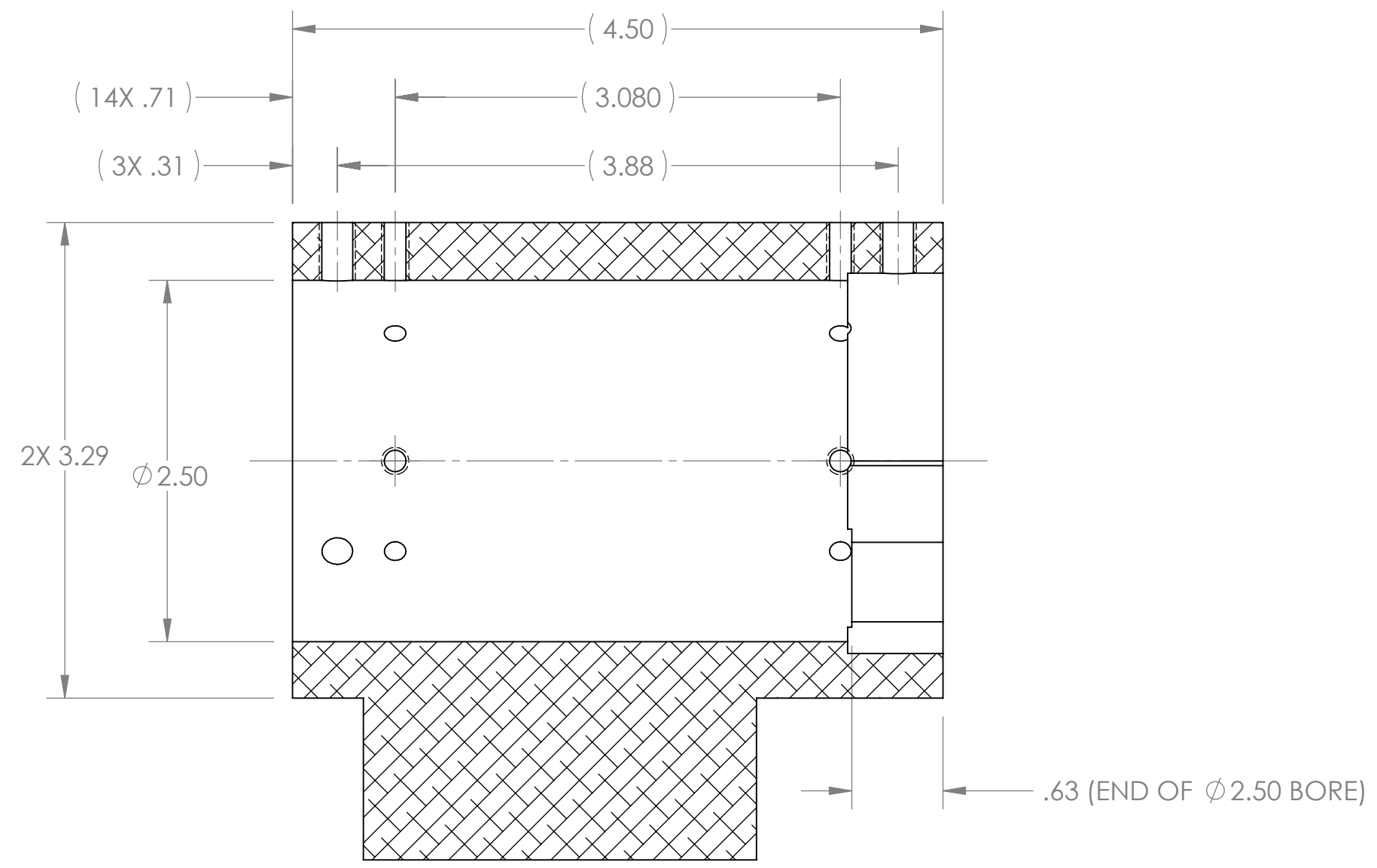
SECTION D-D

DIMENSIONS ARE IN INCHES		NOTES AND TOLERANCES: (UNLESS OTHERWISE SPECIFIED)		CALIFORNIA INSTITUTE OF TECHNOLOGY MASSACHUSETTS INSTITUTE OF TECHNOLOGY		PART NAME	
TOLERANCES: .XX ± .01 .XXX ± .005		1. INTERPRET DRAWING PER ASME Y14.5-1994. 2. REMOVE ALL SHARP EDGES, R.02 MIN. 3. DO NOT SCALE FROM DRAWING. 4. ALL MACHINING FLUIDS MUST BE FULLY SYNTHETIC, FULLY WATER SOLUBLE AND FREE OF SULFUR, SILICONE, AND CHLORINE.		SYSTEM ADVANCED LIGO		SUB-SYSTEM AOS	
ANGULAR ± 1.0°		MATERIAL		NEXT ASSY		DESIGNER C. CONLEY 06 JUN 2010	
6061-T6 Al		FINISH		D1001335 D1001339		SIZE DWG. NO. D D1001449	
63 μinch						CHECKER N. KILPATRICK 07 JUNE 2010	
						APPROVAL SCALE: 1:1 PROJECTION:	
						REV. v1	
						SHEET 1 OF 2	

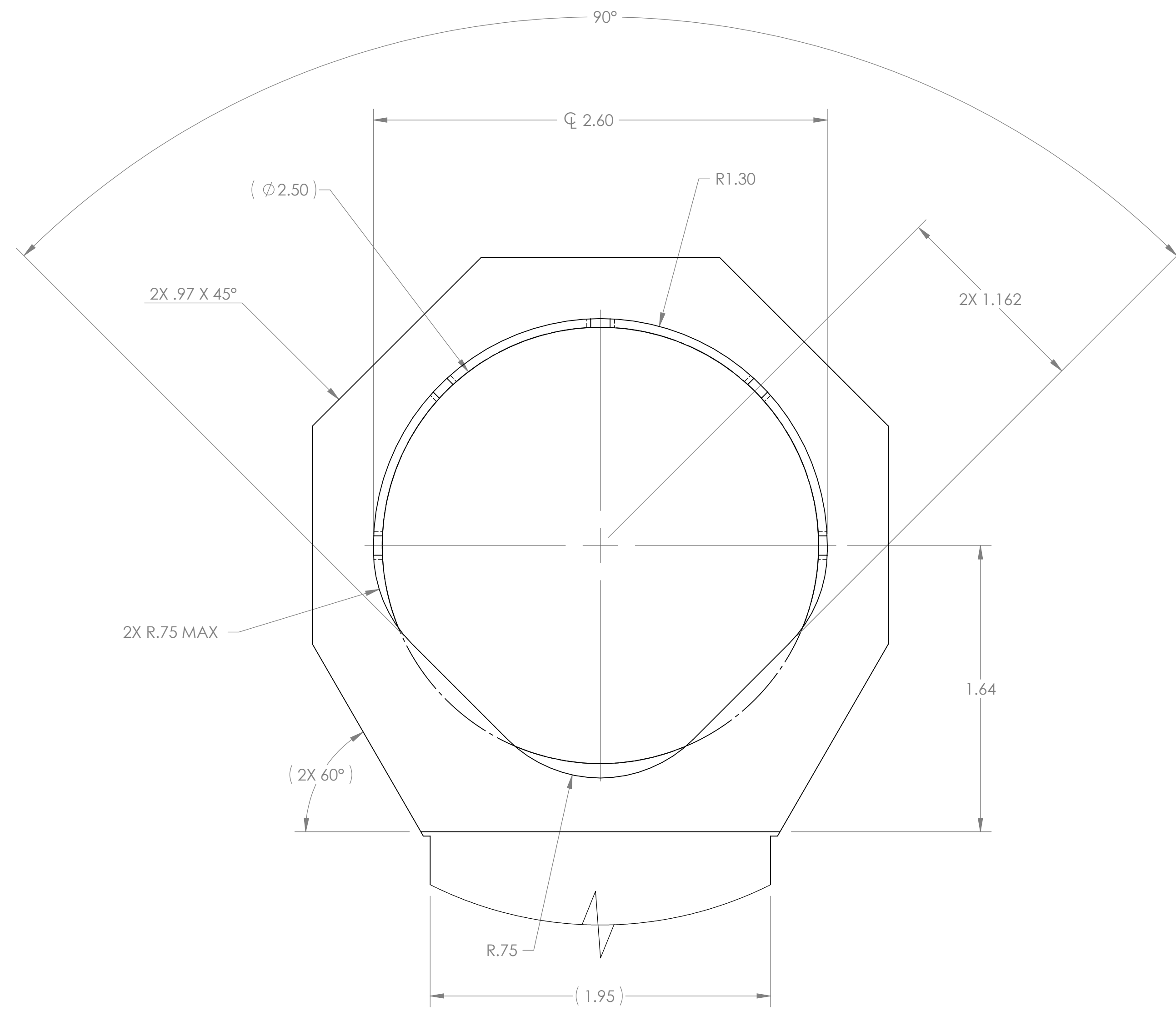
D1001449 ALIGO AOS Oplev Large Telescope Mount PART PDM REV: X.009 DRAWING PDM REV: X.009

8 7 6 5 4 3 2 1

H
G
F
E
D
C
B
A



SECTION A-A



DETAIL C
SCALE 2 : 1

LIGO CALIFORNIA INSTITUTE OF TECHNOLOGY MASSACHUSETTS INSTITUTE OF TECHNOLOGY		REV.
SIZE DWG. NO.	D1001449	v1
SCALE: 1:1	PROJECTION:	SHEET 2 OF 2

8 7 6 5 4 3 2 1

H
G
F
E
D
C
B
A

D:\001449\ligo\ACS\Ocleve\Large\Telescope Mount\PART PDM\REV.X:009 DRAWING PDM\REV.X:009