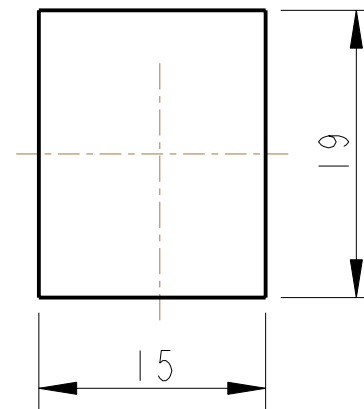
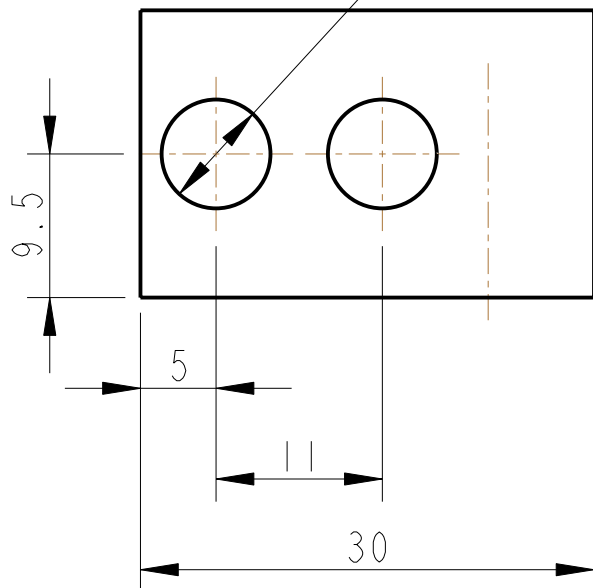
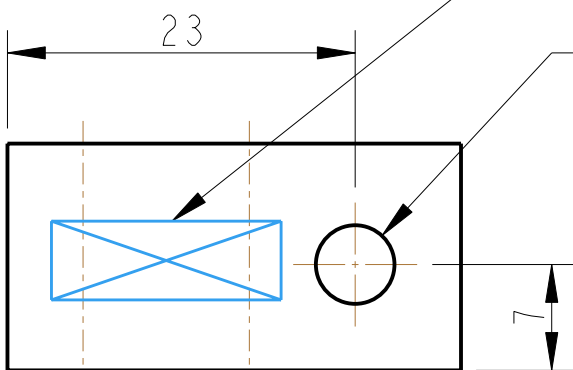


C. BORE $\text{Ø} 10.2 \pm 0.1 \times 5 \text{ DP}$

2 HOLES $\text{Ø} 7.2 \text{ THRO}'$



PART NO. (SEE NOTE 4)
TO BE ETCHED OR STAMPED
IN APPROX POSITION SHOWN.



$\text{Ø} 5.2^{+0.2}_0 \text{ THRO}'$

NOTES: (UNLESS OTHERWISE SPECIFIED)

1. REMOVE ALL SHARP EDGES, R.02 MIN.
2. DO NOT SCALE FROM DRAWING.
3. ALL MACHINING FLUIDS SHALL BE WATER SOLUBLE AND FREE OF SULFUR, CHLORINE AND SILICONE, SUCH AS CINCINNATI MILACRON'S CIMTECH 410 (STAINLESS STEEL)
4. SCRIBE, ENGRAVE OR STAMP DRAWING PARTNUMBER ON NOTED SURFACE OF PART AND A THREE DIGIT SERIAL NUMBER. SERIAL NUMBERS START AT 001 FOR THE FIRST PART AND PROCEED CONSECUTIVELY. USE .07" HIGH CHARACTERS. EXAMPLE: D020188- 001. A VIBRATORY TOOL MAY BE USED.

DIMENSIONS ARE IN mm [INCHES]
TOLERANCES:

X.XX $\pm 0.2 \text{ mm}$
ANGULAR $\pm 0.25^\circ$

MATERIAL: AL ALLOY
5083

FINISH: CLEAN, GREASE FREE
 $\sqrt{\mu\text{m}}$ [μin] $R_a = 1.6$

	NAME	DATE
DRAWN	J O'DELL	30/APR/08
CHECKED	IW	--/--/--
APPROVED	JOD	--/--/--



SYSTEM	ADVANCED LIGO
SUB-SYSTEM	SUS
NEXT ASSY	EARTHQUAKE STOP TOOLING
PART NAME	ADJUSTABLE GUIDE FLOUREL TRIMMER

SIZE	A	DRG. NO.	D080248	REV	A.
SCALE	2:1	PROJECTION		SHEET	1 OF