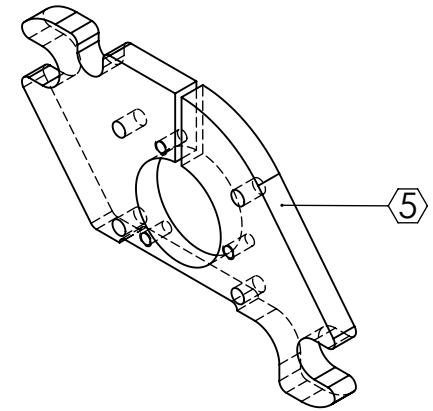
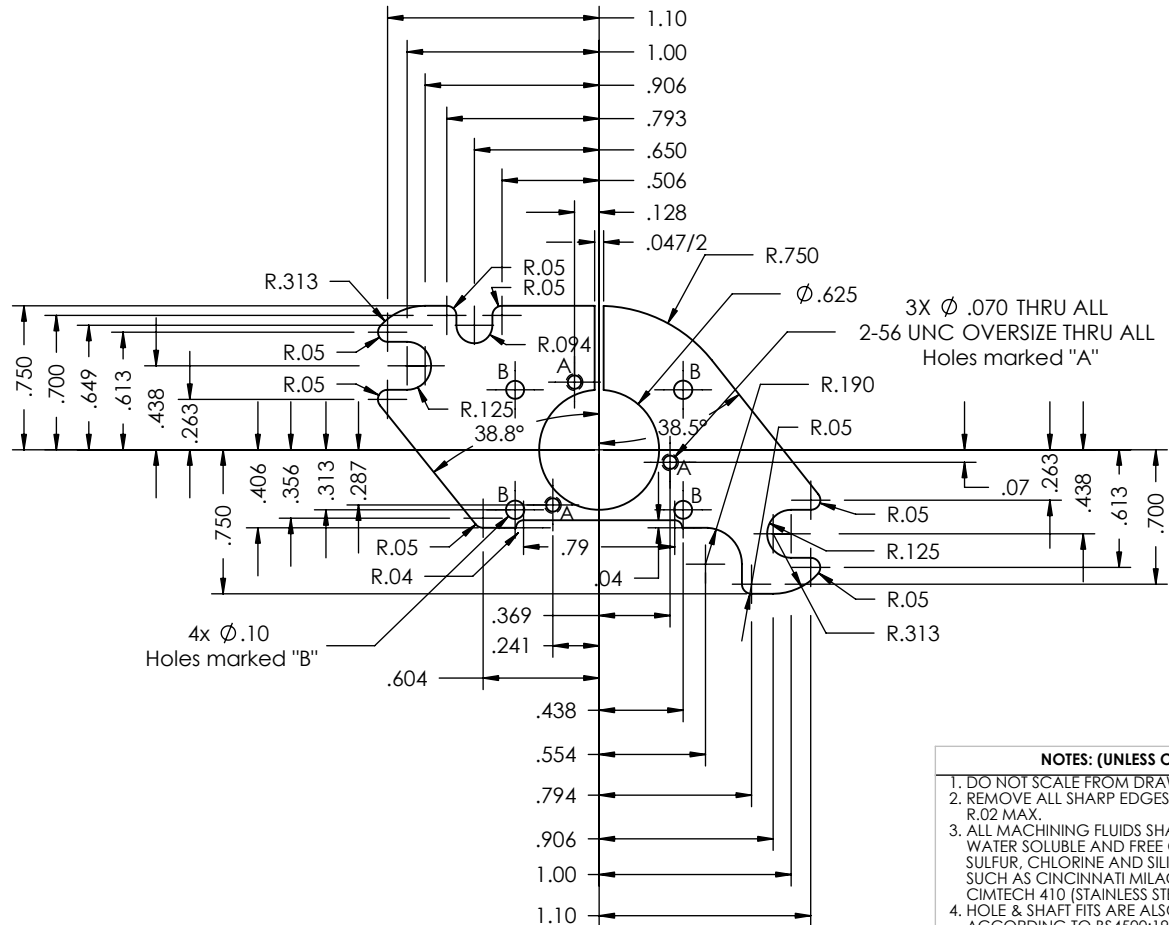
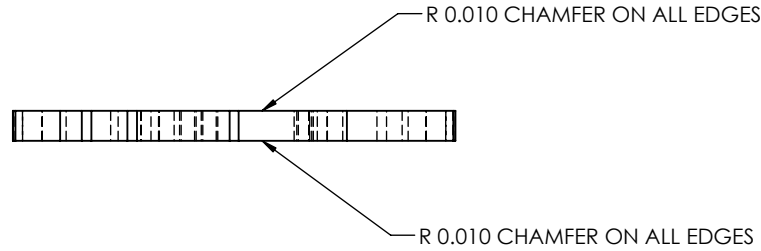


REV.	DATE	DCN #	DRAWING TREE #
A	6 NOV 06	E060262	E060243
B	1 APR 07	E060262	E060243
C	12 DEC 07	E060262	E060243



**NOTES: (UNLESS OTHERWISE SPECIFIED)**

- DO NOT SCALE FROM DRAWING
  - REMOVE ALL SHARP EDGES, R.02 MAX.
  - ALL MACHINING FLUIDS SHALL BE WATER SOLUBLE AND FREE OF SULFUR, CHLORINE AND SILICONE, SUCH AS CINCINNATI MILACRON'S CIMTECH 410 (STAINLESS STEEL)
  - HOLE & SHAFT FITS ARE ALSO GIVEN ACCORDING TO BS4500:1969
- Ⓢ SCRIBE, ENGRAVE OR STAMP DRAWING PART NUMBER, REVISION ON NOTED SURFACE OF PART AND THEN A THREE DIGIT SERIAL NUMBER. SERIAL NUMBERS START AT 001 FOR THE FIRST PART AND PROCEED CONSECUTIVELY. USE .07" HIGH CHARACTERS. A VIBRATORY TOOL MAY BE USED. EXAMPLE: D060107-C SN 001

DIMENSIONS ARE IN INCHES [mm]		
TOLERANCES: .XX ± 0.01 .XXX ± 0.005		
ANGULAR ± 0.5 °		
MATERIAL A/Alloy 6082		
FINISH 32 μ inch		
	NAME	DATE
DRAWN	S. Bookes	26 JUN 06
CHECKED	S. Aston	22 AUG 06
APPROVED	A. Vecchio	31 OCT 06

	CALIFORNIA INSTITUTE OF TECHNOLOGY MASSACHUSETTS INSTITUTE OF TECHNOLOGY IGR, GLASGOW UNIVERSITY GEO 600 GROUP UNIVERSITY OF BIRMINGHAM	
	SYSTEM	ADVANCED LIGO
SUB-SYSTEM	SUS	
NEXT ASSY	D060218 BOSEM Assembly	
PART NAME	Backplate	
SIZE	DWG. NO.	REV.
A	D060107	C
SCALE: 1:1		PROJECTION:
SHEET 1 OF 1		