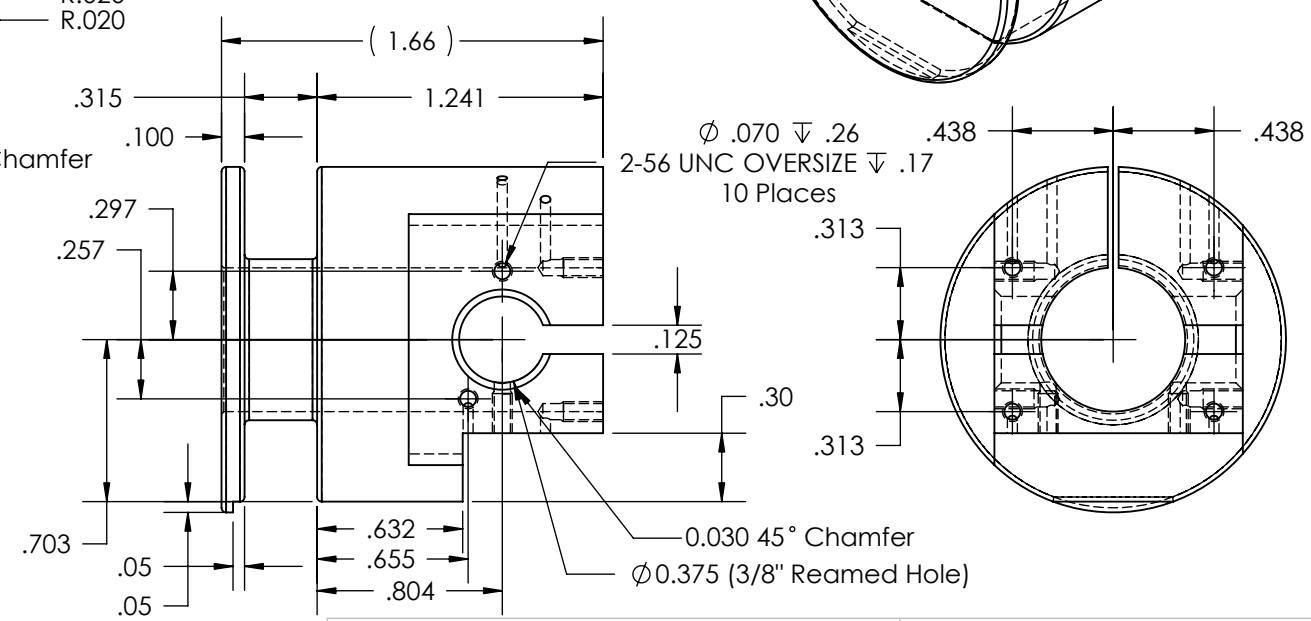
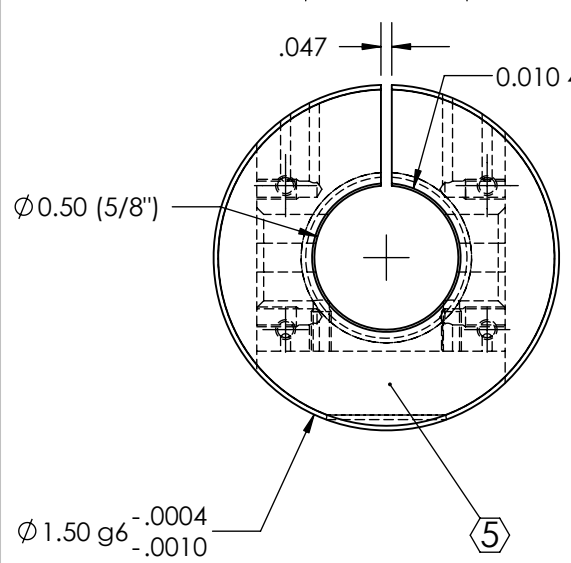
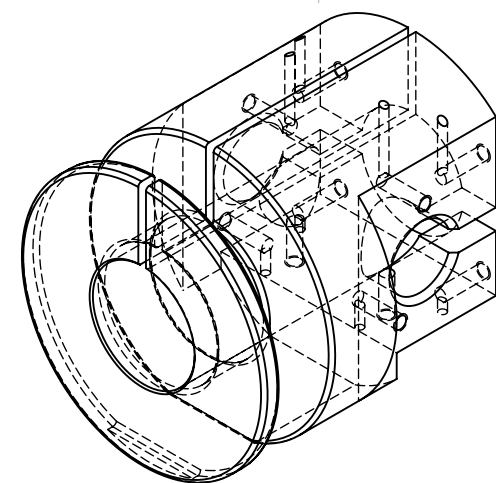
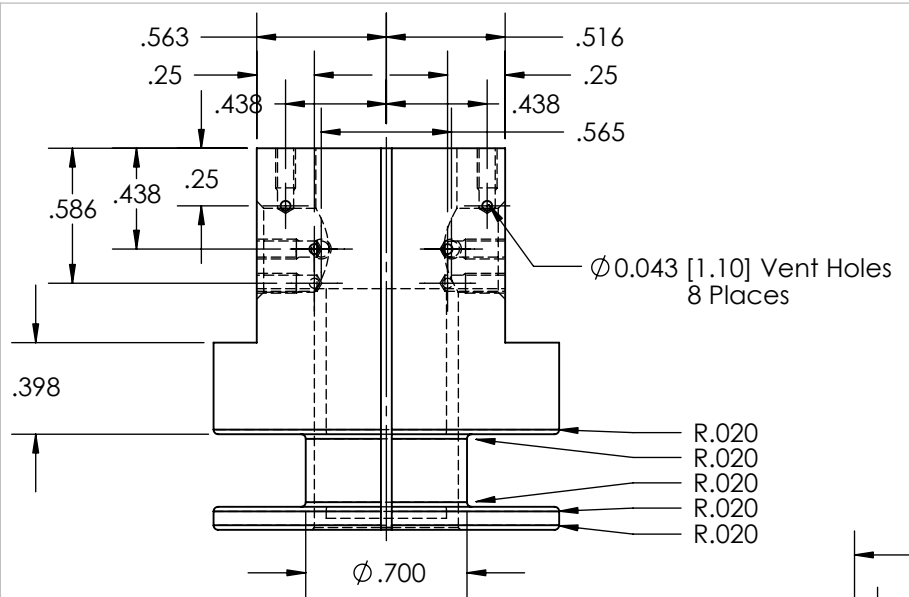


| REV. | DATE      | DCN #   | DRAWING TREE # |
|------|-----------|---------|----------------|
| A    | 6 NOV 06  | E060262 | E060243        |
| B    | 1 APR 07  | E060262 | E060243        |
| C    | 12 DEC 07 | E060262 | E060243        |



**NOTES: (UNLESS OTHERWISE SPECIFIED)**

- DO NOT SCALE FROM DRAWING
- REMOVE ALL SHARP EDGES, R.02 MAX.
- ALL MACHINING FLUIDS SHALL BE WATER SOLUBLE AND FREE OF SULFUR, CHLORINE AND SILICONE, SUCH AS CINCINNATI MILACRON'S CIMTECH 410 (STAINLESS STEEL)
- HOLE & SHAFT FITS ARE ALSO GIVEN ACCORDING TO BS4500:1969

Ⓢ SCRIBE, ENGRAVE OR STAMP DRAWING PART NUMBER, REVISION ON NOTED SURFACE OF PART AND THEN A THREE DIGIT SERIAL NUMBER. SERIAL NUMBERS START AT 001 FOR THE FIRST PART AND PROCEED CONSECUTIVELY. USE .07" HIGH CHARACTERS. A VIBRATORY TOOL MAY BE USED. EXAMPLE: D060106-C SN 001

DIMENSIONS ARE IN INCHES [mm]

TOLERANCES:  
 .XX ± 0.01  
 .XXX ± 0.005

ANGULAR ± 0.5°

**MATERIAL**  
A/Alloy 6082

**FINISH**  
32 μ inch

|                 | NAME       | DATE      |
|-----------------|------------|-----------|
| <b>DRAWN</b>    | S. Bookes  | 26 JUN 06 |
| <b>CHECKED</b>  | S. Aston   | 22 AUG 06 |
| <b>APPROVED</b> | A. Vecchio | 31 OCT 06 |

**LIGO** CALIFORNIA INSTITUTE OF TECHNOLOGY  
 MASSACHUSETTS INSTITUTE OF TECHNOLOGY  
 IGR, GLASGOW UNIVERSITY GEO 600 GROUP  
 UNIVERSITY OF BIRMINGHAM

**SYSTEM** ADVANCED LIGO

**SUB-SYSTEM** SUS

**NEXT ASSY** D060218 BOSEM Assembly

**PART NAME** Coilformer

**SIZE DWG. NO.** D060106

**SCALE:** 1:1 **PROJECTION:** **SHEET 1 OF 1**

REV. C