



aLIGO AOS OpLev TX Pier Assembly

AUTHOR(S)	DATE	Document Change Notice, Release or Approval
Eric James	26 June, 2012	see LIGO DCC record Status

This document is intended to serve as a description of this assembly until a real assembly drawing can be made.

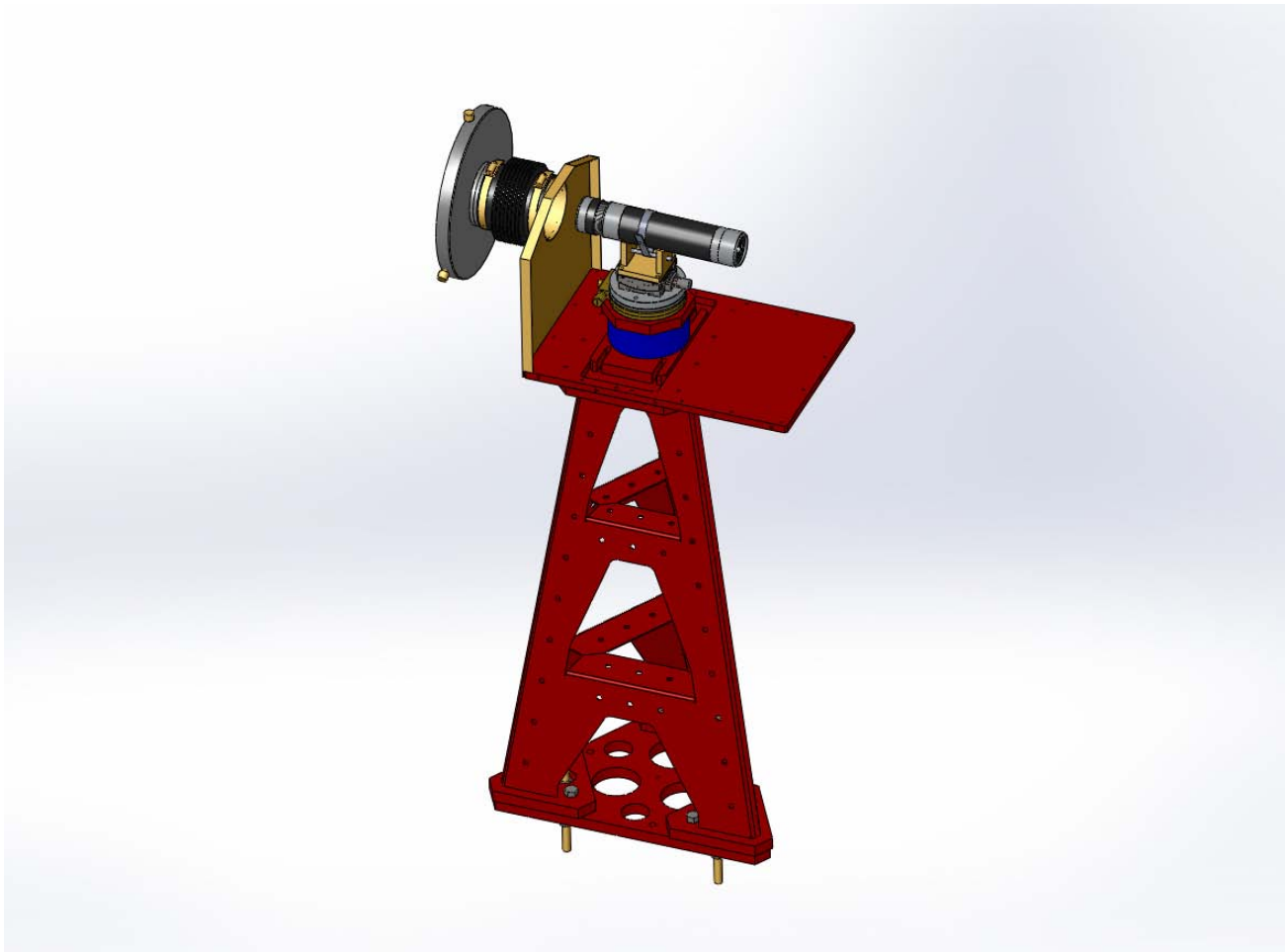


Figure 1: ITM/ETM Transmitter Pier Assembly. Shown with cover removed.

Bill of Material

Item	Part number	Description	Quant.
1	D1000452	Pier Weldment	1
2	D1000434	Pier Footing	1
3	D1001452	TX Enclosure Base	1
4	D1000428	TX Mounting Base	1
5	D1000502	Height Tube	1
6	D1000509	TX Mounting Plate	1
7	126-6526	OptoSigma Goniometer	1
8	124-0090	OptoSigma Rotary Stage	1



ALIGO ASSEMBLY DRAWING

aLIGO AOS OpLev TX Pier Assembly

9		OptoSigma 70 mm Pitch-Yaw Adapter Plate	1
10	D1102243	Transmitter Telescope Mount	1
11	D0901362	Projection Telescope Assembly, Long	1
12	D1100209	Transmitter Enclosure Assembly	1
13	D1200528	4-inch Reducer	1
14	CT-4	Gortiflex 4" Rubber Bellows	1
15		1/2-20 x 1.5" Hex head cap screw	9
16		1/4-20 x 1" SHCS	10
17		5/16-18 x 1: SHCS	4
18		5/16 Flat Washer	4
19		7/16-14 x 3" SHCS	4
20		M6 x 12 SHCS	4
21		M4 x 8 SHCS	4
22		1/4-20 x 3" SHCS	1
23		3" Band Clamp	1
24		#10-24 x 1/2" SHCS	16
25		#10 Flat Washer	16
26	45945K35	McMaster Carr 4" Band Clamp	2
27	92421A540	McMaster Carr 1/4-20 Brass Thumb Screw	3
28	9600K62	McMaster-Carr Rubber Grommet	1
29	F12 635S	Fermion Laser w/ 10m fiber	1
30	D1200461	Laser Power Board	1
31	D1100013	Whitening Chassis	1
32	D1101248	Anti-aliasing Chassis	1
33		9-pin M-F, Anti-aliasing Chassis Cable	1
34		BNC M-M, Laser Cable	1
35			



ALIGO ASSEMBLY DRAWING

aLIGO AOS OpLev TX Pier Assembly

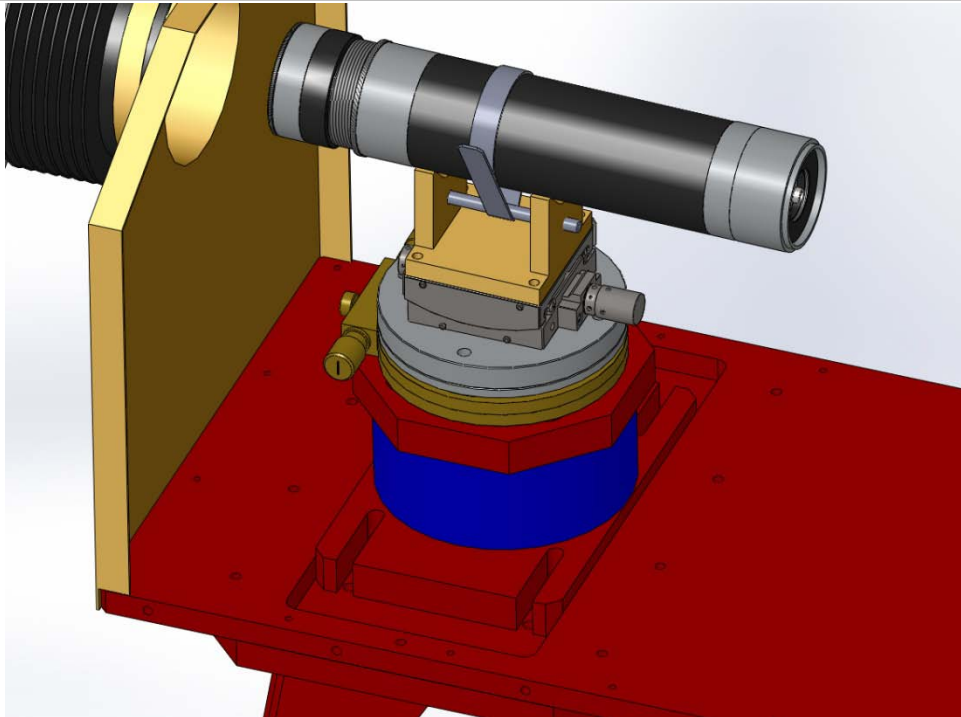


Figure 2: Telescope mounting hardware

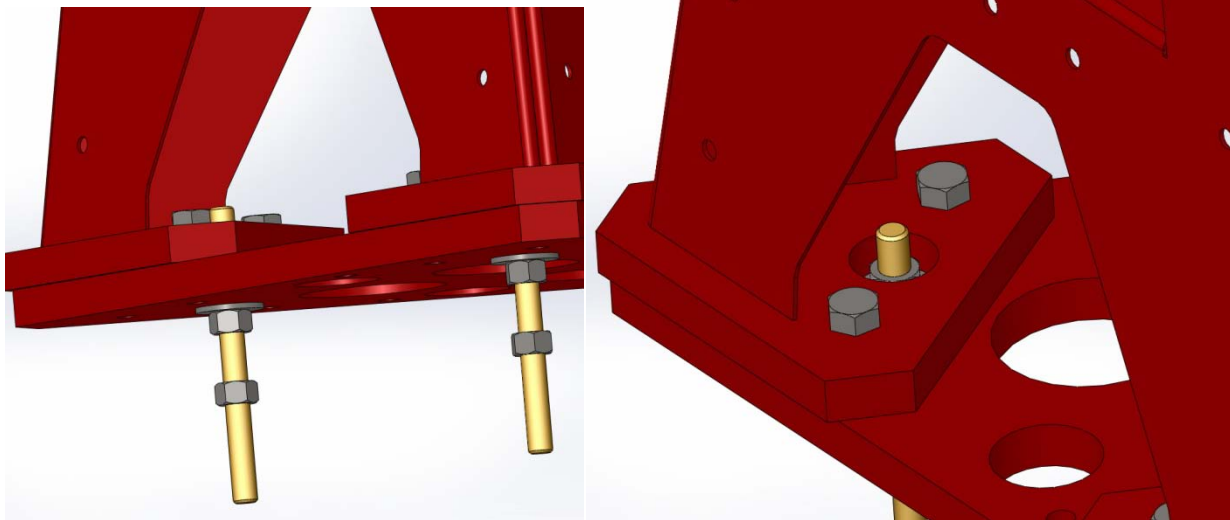


Figure 3: Base plate details



ALIGO ASSEMBLY DRAWING

aLIGO AOS OpLev TX Pier Assembly

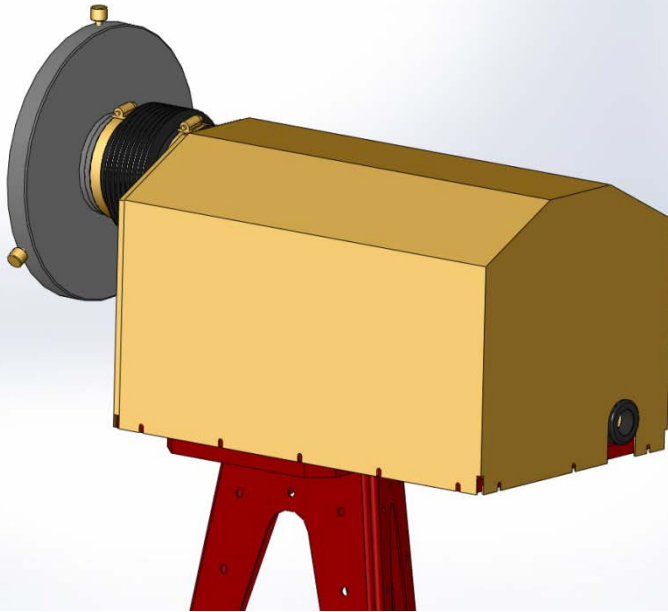


Figure 4: Cover installed