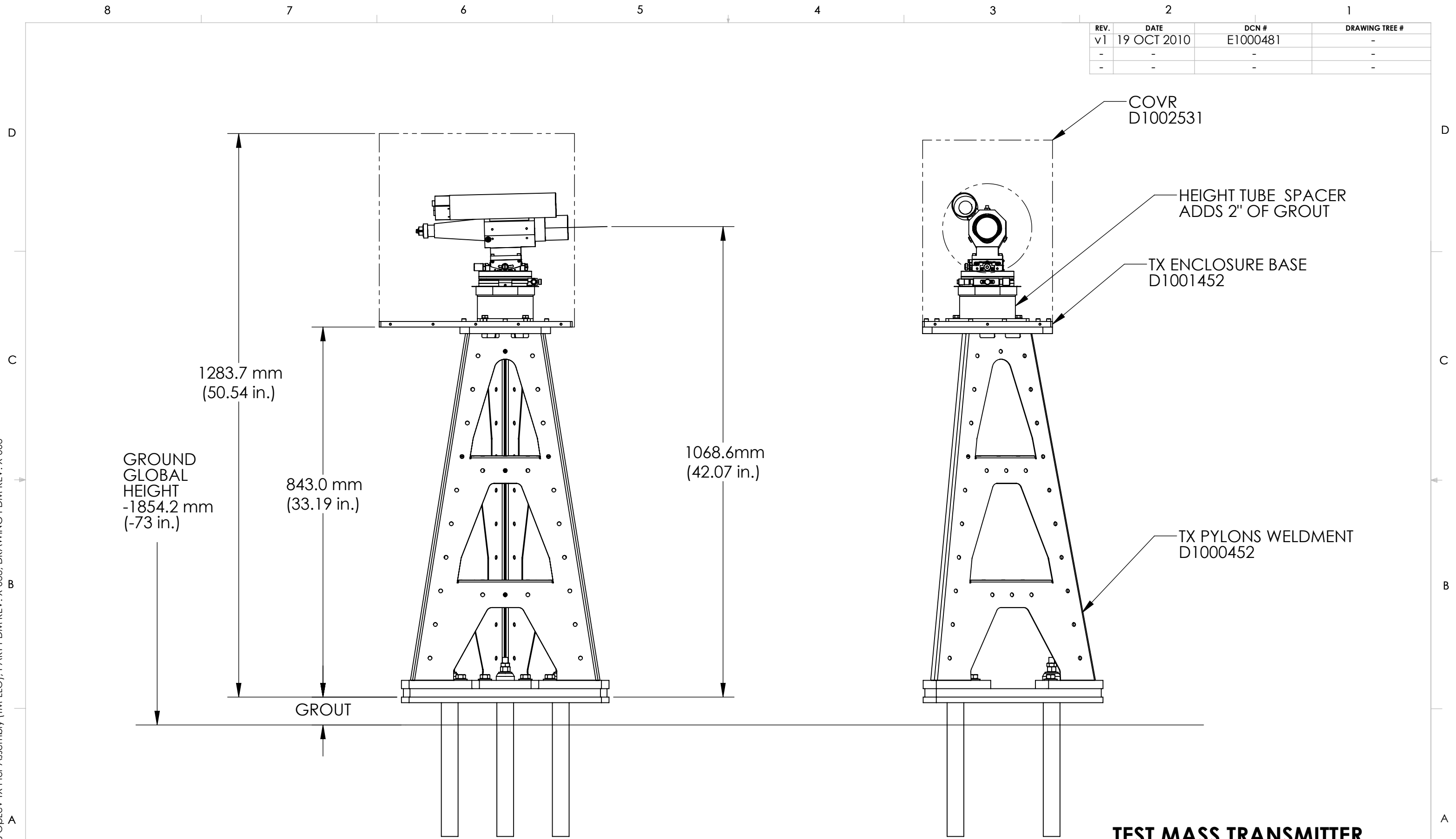


D1001339 aLIGO AOS Opl Lev TX Pier Assembly (TM-LLO), PART PDM REV: X-033, DRAWING PDM REV: X-003

REV.	DATE	DCN #	DRAWING TREE #
v1	19 OCT 2010	E1000481	-
-	-	-	-
-	-	-	-



TEST MASS TRANSMITTER

NOTES AND TOLERANCES: (UNLESS OTHERWISE SPECIFIED)	
DIMENSIONS ARE IN INCHES	
TOLERANCES: .XX ± .01 .XXX ± .005	
ANGULAR ± 1.0°	
1. INTERPRET DRAWING PER ASME Y14.5-1994. 2. REMOVE ALL SHARP EDGES, R.02 MIN. 3. DO NOT SCALE FROM DRAWING. 4. ALL MACHINING FLUIDS MUST BE FULLY SYNTHETIC, FULLY WATER SOLUBLE AND FREE OF SULFUR, SILICONE, AND CHLORINE.	
MATERIAL	N/A
FINISH	N/A μinch

CALIFORNIA INSTITUTE OF TECHNOLOGY MASSACHUSETTS INSTITUTE OF TECHNOLOGY		PART NAME		ALIGO AOS APLEV TX PIER ASSEMBLY (TM)	
SYSTEM	ADVANCED LIGO	SUB-SYSTEM	AOS	DESIGNER	C. CONLEY 13 AUG 2010
NEXT ASSY	D1000321 D1000376 D1000401 D1000404	CHECKER	N. KILPATRICK 19 OCT 2010	DRFTR	N. KILPATRICK 19 OCT 2010
APPROVAL			SCALE: 1:16	PROJECTION:	
				SIZE DWG. NO.	B D1001339
				REV.	v1
				SHEET 1 OF 1	