



ALIGO ASSEMBLY DRAWING

aLIGO AOS OpLev PR3/SR3 TX Pier Assembly

AUTHOR(S)	DATE	Document Change Notice, Release or Approval
Eric James	26 June, 2012	see LIGO DCC record Status

This document is intended to serve as a description of this assembly until a real assembly drawing can be made.

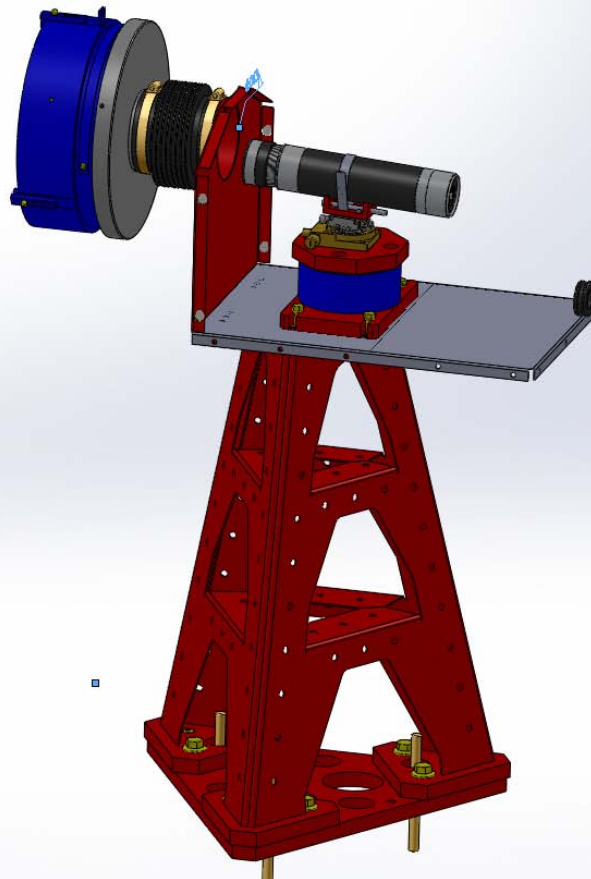


Figure 1: PR3/SR3 Transmitter Pier Assembly. Shown with cover removed.

Bill of Material

Item	Part number	Description	Quant.
1	D1001301	Pier Weldment	1
2	D1000434	Pier Footing	1
3	D1000428	Mounting Base	1
4	D1000502	Height tube	1
5	D1001993	TX Mounting Plate	1
6	91211DD01	OptoSigma Goniometer/ Rotary Stage	1
7	D1102242	Transmitter Telescope Mount	1
8	D1200964	Base Extension	1



## ALIGO ASSEMBLY DRAWING

**aLIGO AOS OpLev PR3/SR3 TX Pier Assembly**

9	D0901362	Projection Telescope Assembly, Long	1
10	D1100209	Transmitter Enclosure Assembly	1
11	D1200528	4-inch Reducer	1
12	CT-4	Gortiflex 4" Rubber Bellows	1
13		1/2-20 x 1.5" Hex head cap screw	9
14		5/16-18 x 1: SHCS	4
15		5/16 Flat Washer	4
16		7/16-14 x 3" SHCS	4
17		M6 x 12 SHCS	4
18		M4 x 8 SHCS	4
19		1/4-20 x 3" SHCS	1
20		3" Band Clamp	1
21		10-24 x 1/2" SHCS	16
22		#10 Flat Washer	16
23		#10 Hex Nut	7
24	45945K35	McMaster Carr 4" Band Clamp	2
25	92421A540	McMaster Carr 1/4-20 Brass Thumb Screw	3
26	9600K62	McMaster-Carr Rubber Grommet	1
27	F12 635S	Fermion Laser w/ 10m fiber	1
28	D1200461	Laser Power Board	1
29	D1100013	Whitening Chassis	1
30	D1101248	Anti-aliasing Chassis	1
31		9-pin M-F Cable, Anti-aliasing Chassis	1
32		BNC M-M Cable, Laser	1
33			
34			
35			

## ALIGO ASSEMBLY DRAWING

## aLIGO AOS OpLev PR3/SR3 TX Pier Assembly

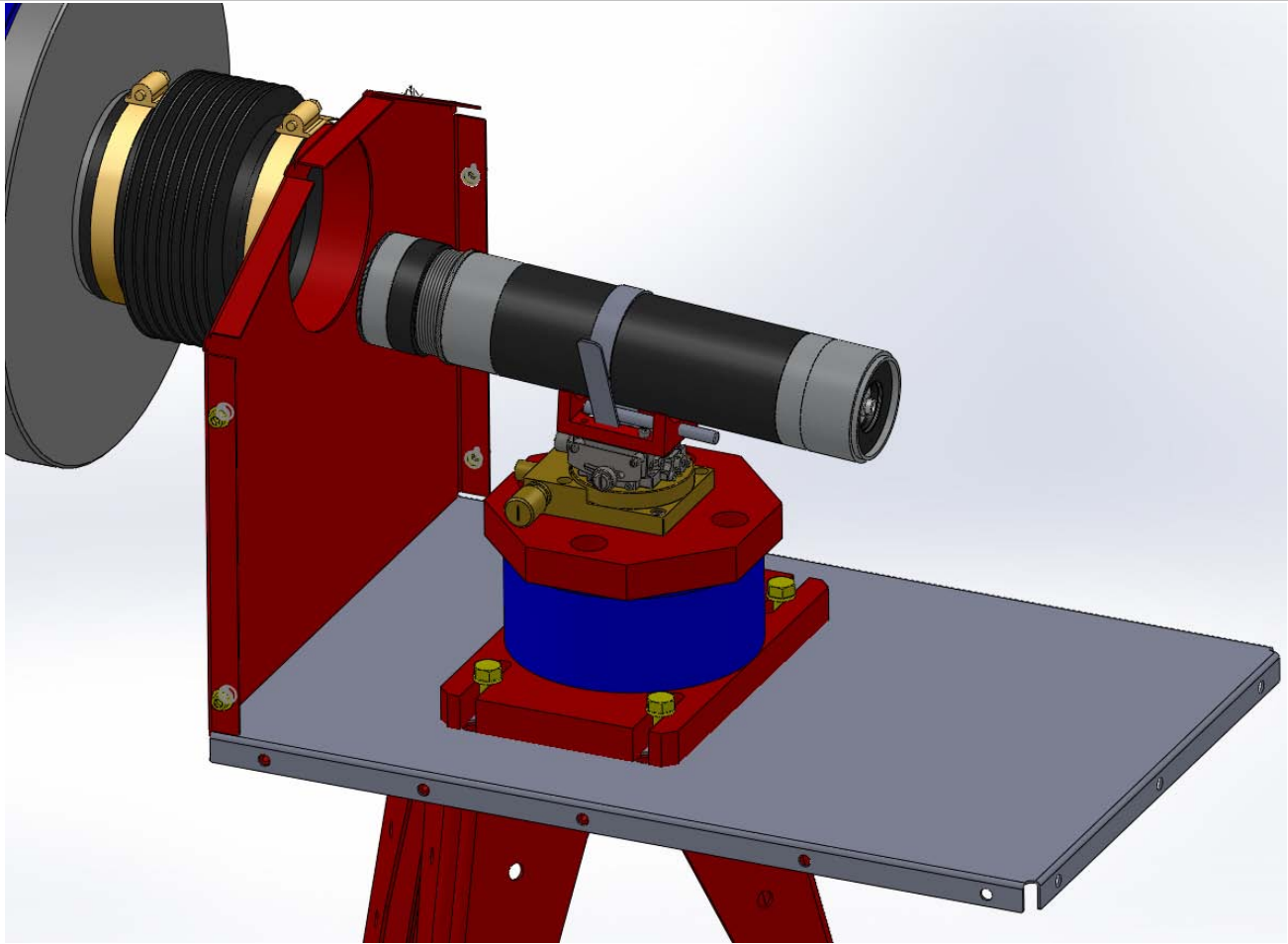


Figure 2: Telescope mounting hardware

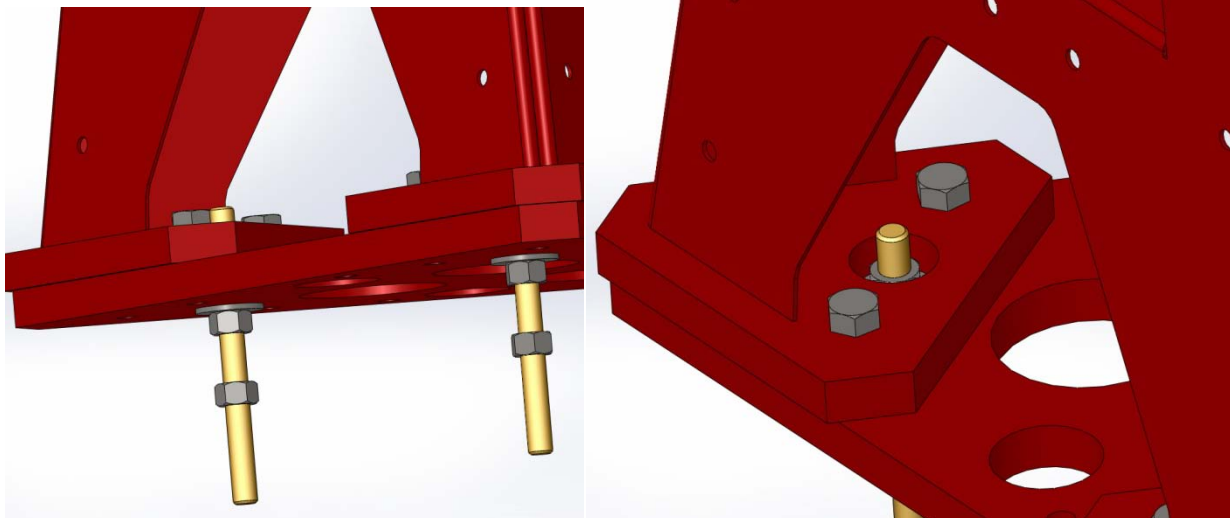


Figure 3: Base plate details



ALIGO ASSEMBLY DRAWING

aLIGO AOS OpLev PR3/SR3 TX Pier Assembly

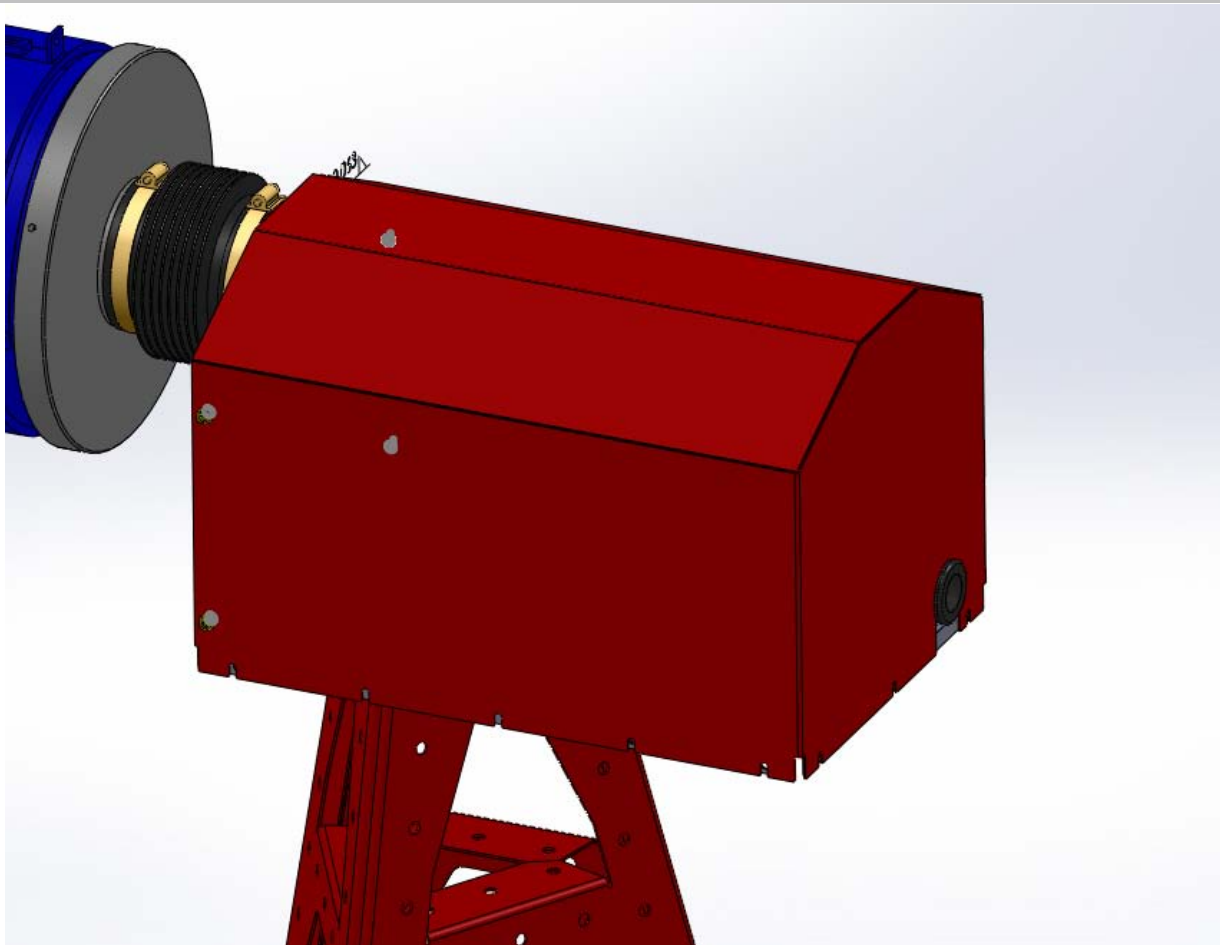


Figure 4: Cover installed