

NOTES CONTINUED:

5. SCRIBE, ENGRAVE, OR MECHANICALLY STAMP (NO DYES OR INKS) A UNIQUE THREE DIGIT NUMBER & REVISION NUMBER ON EACH PART. SERIAL NUMBERS START 001 FOR THE FIRST ARTICLE AND PROCEED CONSECUTIVELY. BAG AND TAG PARTS WITH THEIR DRAWING PART NUMBER, REVISION, VARIANT OR "TYPE" (IF APPLICABLE), AND QUANTITY. IF PARTS ARE TOO SMALL TO SCRIBE, BAGGING AND TAGGING ALONE IS SUFFICIENT.
 EXAMPLE (PART): 001-v1
 EXAMPLE (TAG): DXXXXXX-VY, TYPE-XX, QTY: TBD

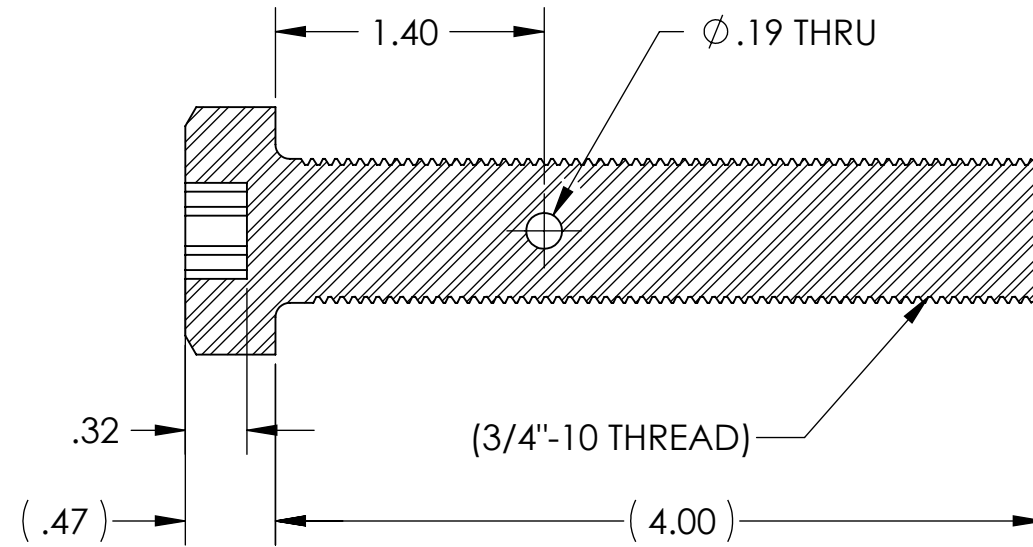
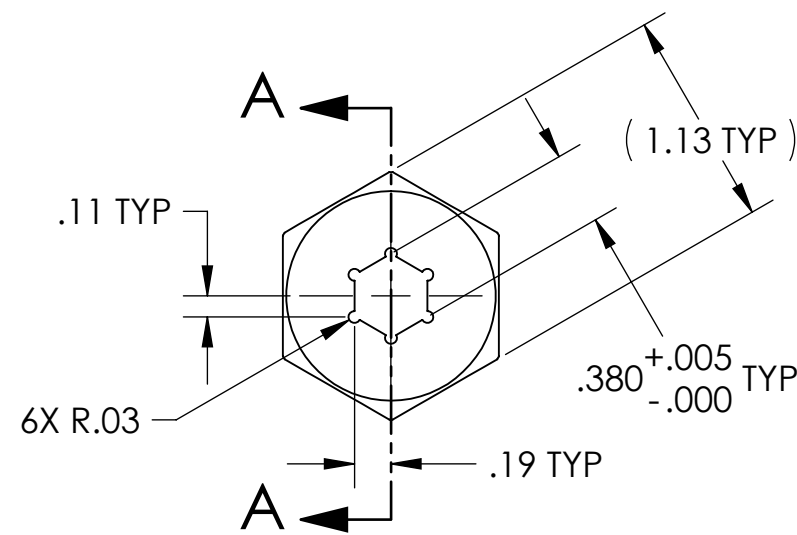
6. APPROXIMATE WEIGHT = 0.590 LB.

D 7. ALL PARTS SHALL BE MANUFACTURED IN ACCORDANCE WITH LIGO SPECIFICATION E0900364.

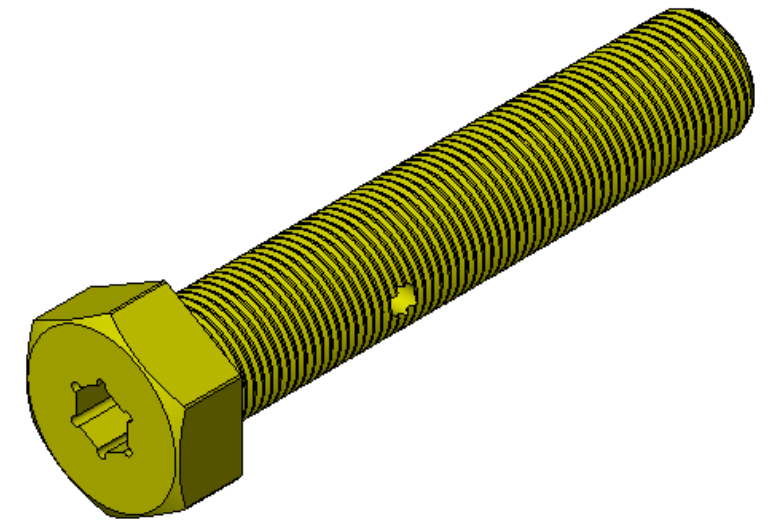
8. ALL MATERIAL IS TO BE VIRGIN MATERIAL (i.e. NO WELD REPAIRS, PLUGS OR RECYCLED MATERIAL). NO REPAIRS SHALL BE MADE UNLESS APPROVED IN ADVANCE, AND IN WRITING, BY LIGO LABORATORY. REFER TO LIGO-E0900364.

9. PART TO BE MADE FROM MC MASTER CARR P/N 92240A849.

REV.	DATE	DCN #	DRAWING TREE #
v1	19 OCT 2010	E1000285	-
-	-	-	-
-	-	-	-



SECTION A-A



D1001186_AdlIGO_AOS_Screw .75-10x4.0_92240A849, PART PDM REV: X-008, DRAWING PDM REV: X-013

NOTES AND TOLERANCES: (UNLESS OTHERWISE SPECIFIED)

DIMENSIONS ARE IN INCHES	
TOLERANCES: .XX ± .01 .XXX ± .005 ANGULAR ± 0.5°	
MATERIAL	18-8 SSSL
FINISH	63 μinch

CALIFORNIA INSTITUTE OF TECHNOLOGY MASSACHUSETTS INSTITUTE OF TECHNOLOGY	
SYSTEM	ADVANCED LIGO
SUB-SYSTEM	AOS
NEXT ASSY	D0901376

PART NAME				SCREW HEX HD #3/4-10 X 4 MODIFIED	
DESIGNER	N.Nguyen	10 Sep 2010	SIZE	DWG. NO.	
DRAFTER	TQ. NGUYEN	18 OCT 2010	B	D1001186	
CHECKER	M. SMITH	15 NOV 2010	SCALE:	1:1	PROJECTION:
APPROVAL	D. COYNE	20 NOV 2010	SHEET 1 OF 1		