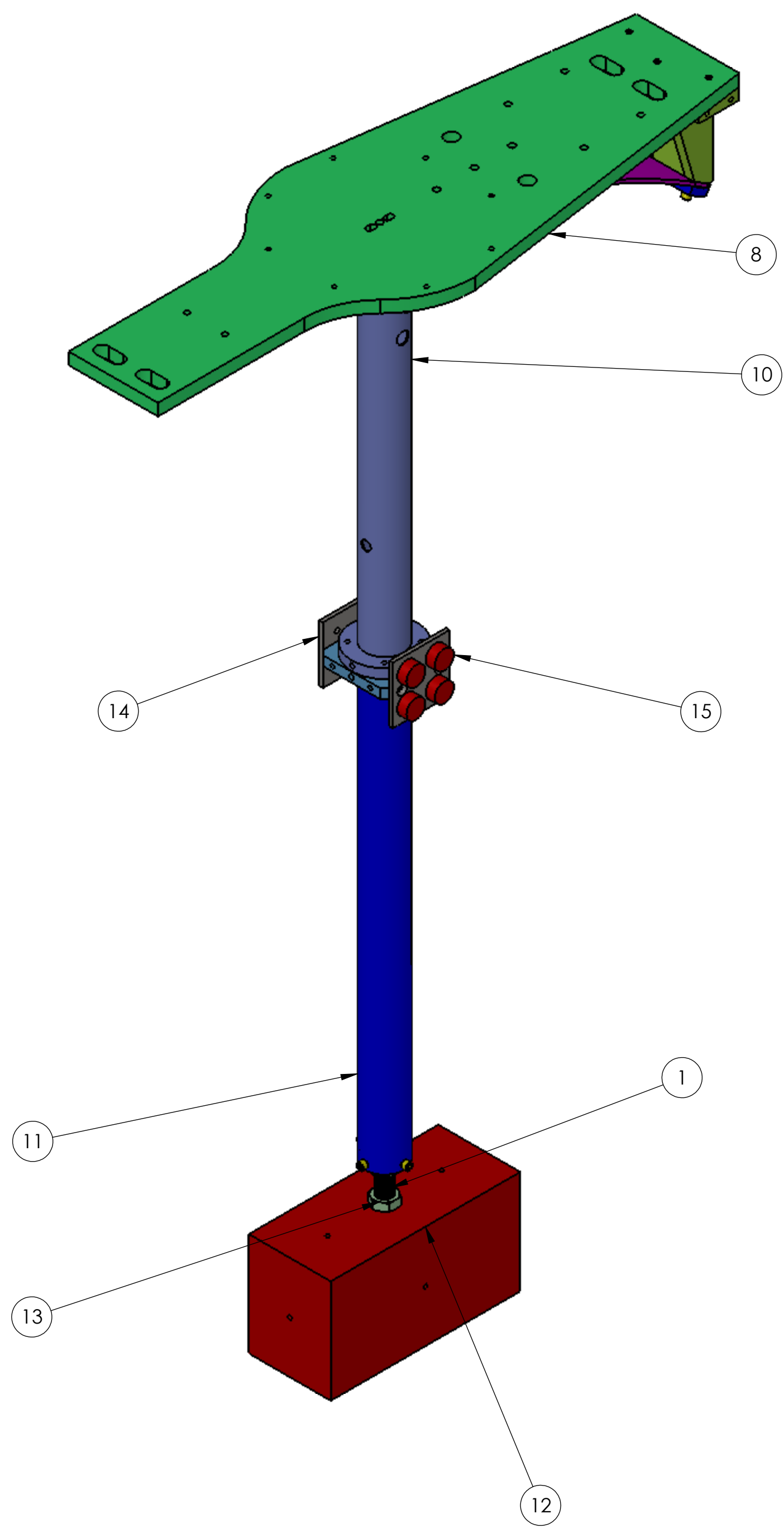
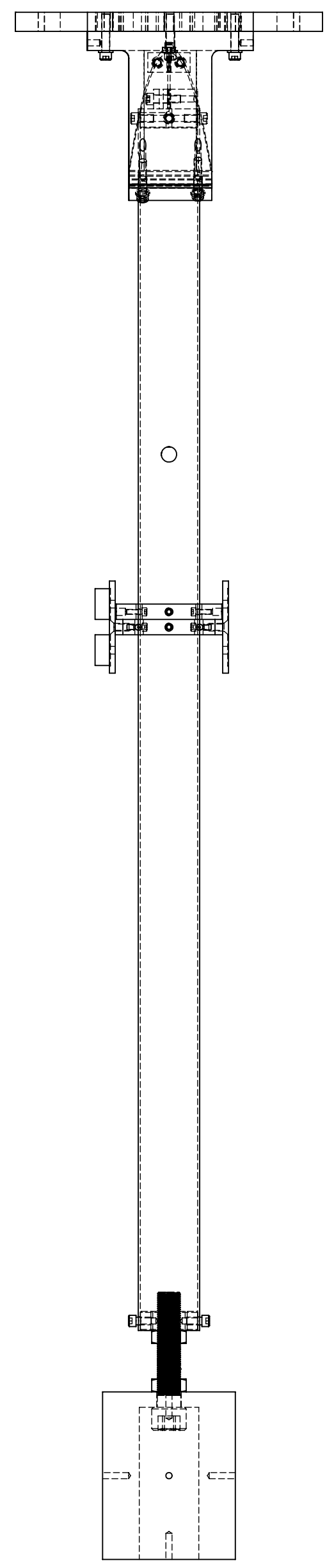
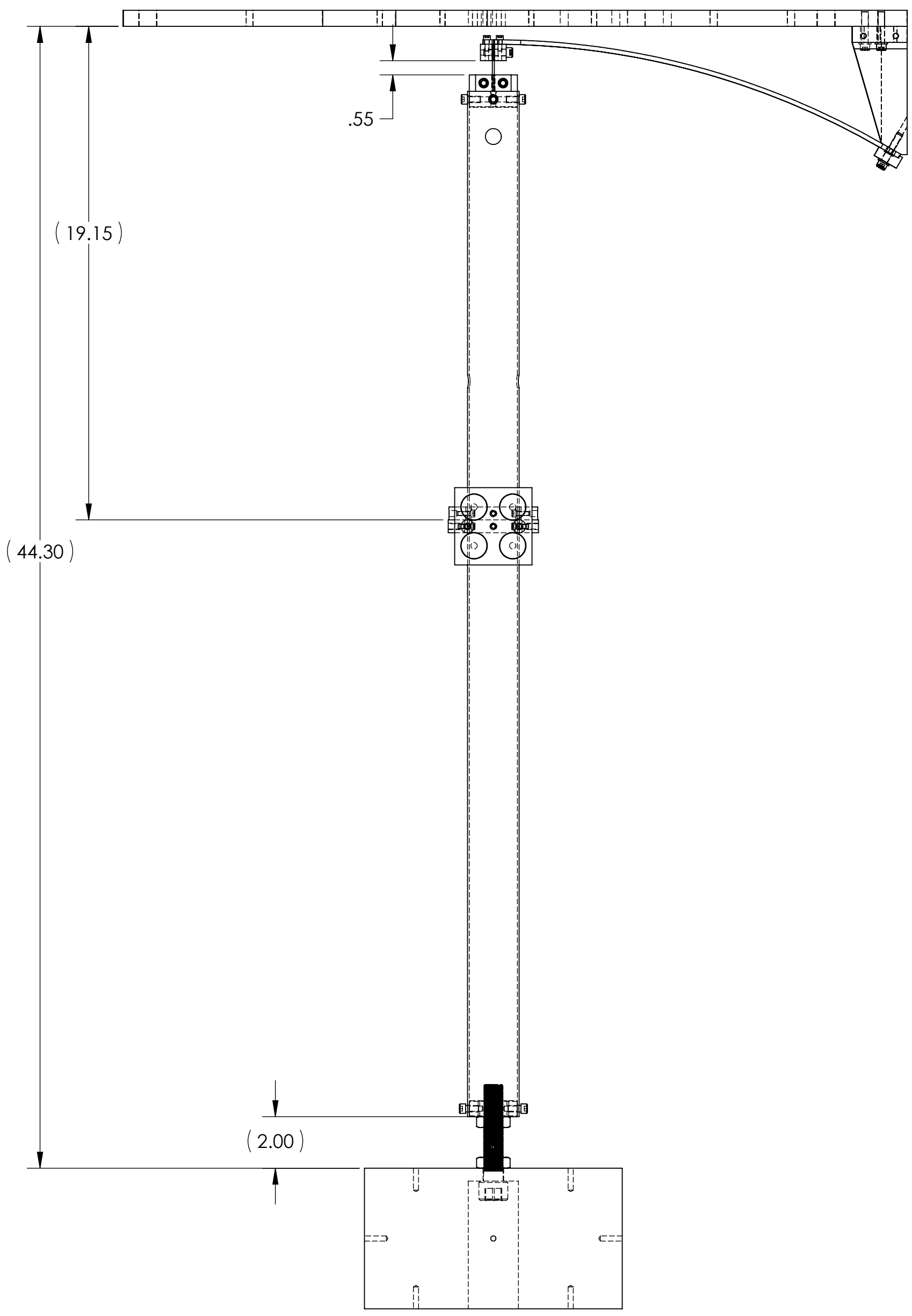
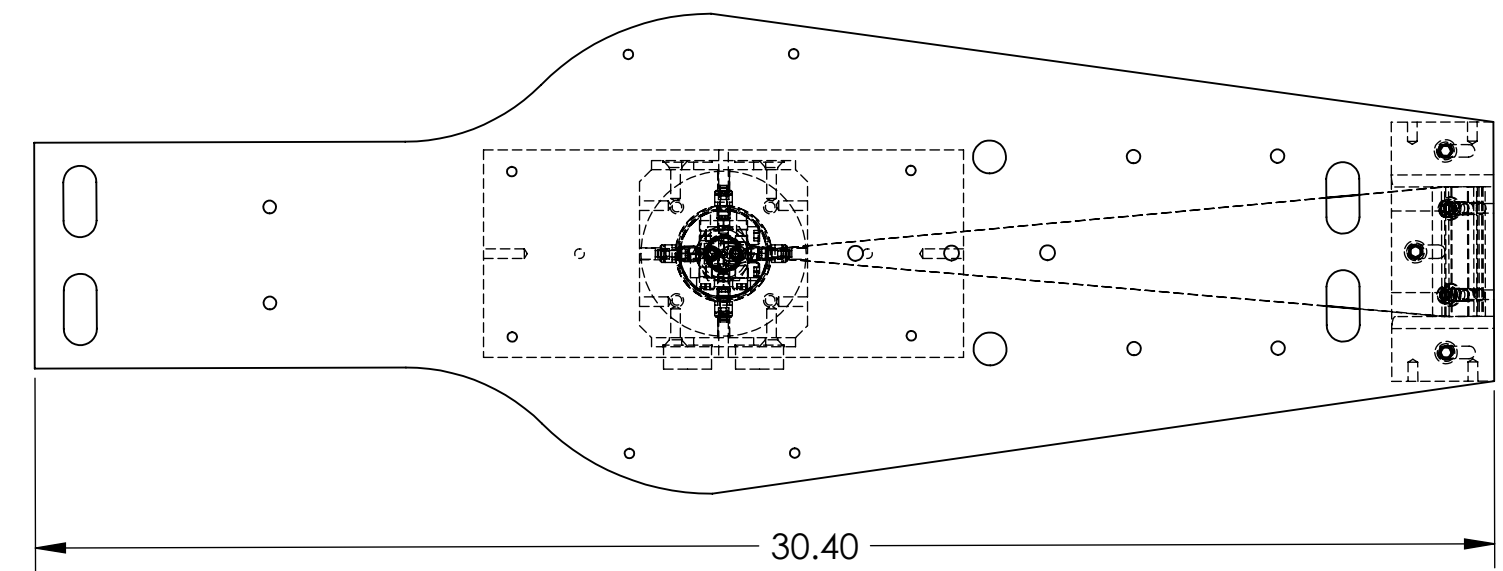


NOTES CONTINUED:
 5.



REV.	DATE	DCN #	DRAWING TREE #
v1	20 SEP 2010	E1000191	-
-	-	-	-
-	-	-	-

ITEM NO.	PART NUMBER	DESCRIPTION	MATERIAL	REQ	SPARE	TOTAL
15	N35P500500HT	BLUNTING MAGNETIC-NEODYMIUM 1.00D X .50H	NEO 35	4		4
14	D1000930	SLC MAGNET HOLDER STEEL PLATE	AISI 1020	2		2
13	91847A555	HEX NUT #.75-16; McMASTER	304, 316 OR 302 SSSL	2		2
12	D1001097	ARM CAVITY BAFFLE DUMMY MASS	304 SSSL	1		1
11	D1001095	SLC TUBE LO ASSY DUMMY MASS	N/A	1		1
10	D1000900	SLC BAFFLE TUBE UP ASSEMBLY	N/A	1		1
9	92196A541	SCREW, SHCS # 1/4-20 UNC-2A X .875, McMaster	18-8 SSSL	4		4
8	D1001766	ARM CAVITY BAFFLE BLADE ASSY-LASTI	N/A	1		1
7	92196A193	SCREW, SHCS, #8-32 UNC-2A X .4375, McMaster	18-8 SSSL	2		2
6	92196A537	SCREW, SHCS# 1/4-20 UNC-2A X .5, McMASTER	18-8 SSSL	4		4
5	D1000704	SLC BLADE-WIRE CLAMP	304 SSSL	1		1
4	D1000703	SLC SUSPENSION WIRE	304 SSSL	1		1
3	D1000702	WIRE GROOVED CLAMP	304 SSSL	2		2
2	D1000701	SLC TUBE/WIRE CLAMP	304 SSSL	1		1
1	D1001657	SHCS # 3/4-16 X 3.75 MODIFIED	304 SSSL	1		1

NOTES AND TOLERANCES: (UNLESS OTHERWISE SPECIFIED)
 1. INTERPRET DRAWING PER ASME Y14.5-1994.
 2. REMOVE ALL SHARP EDGES, R.02 MIN.
 3. DO NOT SCALE FROM DRAWING.
 4. ALL MACHINING FLUIDS MUST BE FULLY SYNTHETIC, FULLY WATER SOLUBLE AND FREE OF SULFUR, SILICONE, AND CHLORINE.

DIMENSIONS ARE IN INCHES
 TOLERANCES:
 .XX ± .02
 .XXX ± .010
 ANGULAR ± 0.5°

MATERIAL N/A FINISH N/A μinch

LIGO CALIFORNIA INSTITUTE OF TECHNOLOGY
 MASSACHUSETTS INSTITUTE OF TECHNOLOGY

SYSTEM ADVANCED LIGO SUB-SYSTEM AOS

NEXT ASSY D1001093

PART NAME
ARM CAVITY BAFFLE ASSY DUMMY

DESIGNER	N.Nguyen	20 Sep 2010	SIZE	DWG. NO.	REV.
DRAFTER	N.Nguyen	20 Sep 2010	D	D1001094	v1
CHECKER	M.Smith	21 Sep 2010			
APPROVAL	D. Coyne	21 Sep 2010	SCALE: 1:8	PROJECTION:	SHEET 1 OF 1

D1001094_A01 LIGO_AOS_SLC_ARM_Cavity_Baffle Assy Dummy Mass_PARE PDM_REV: X:028 DRAWING PDM_REV: X:004