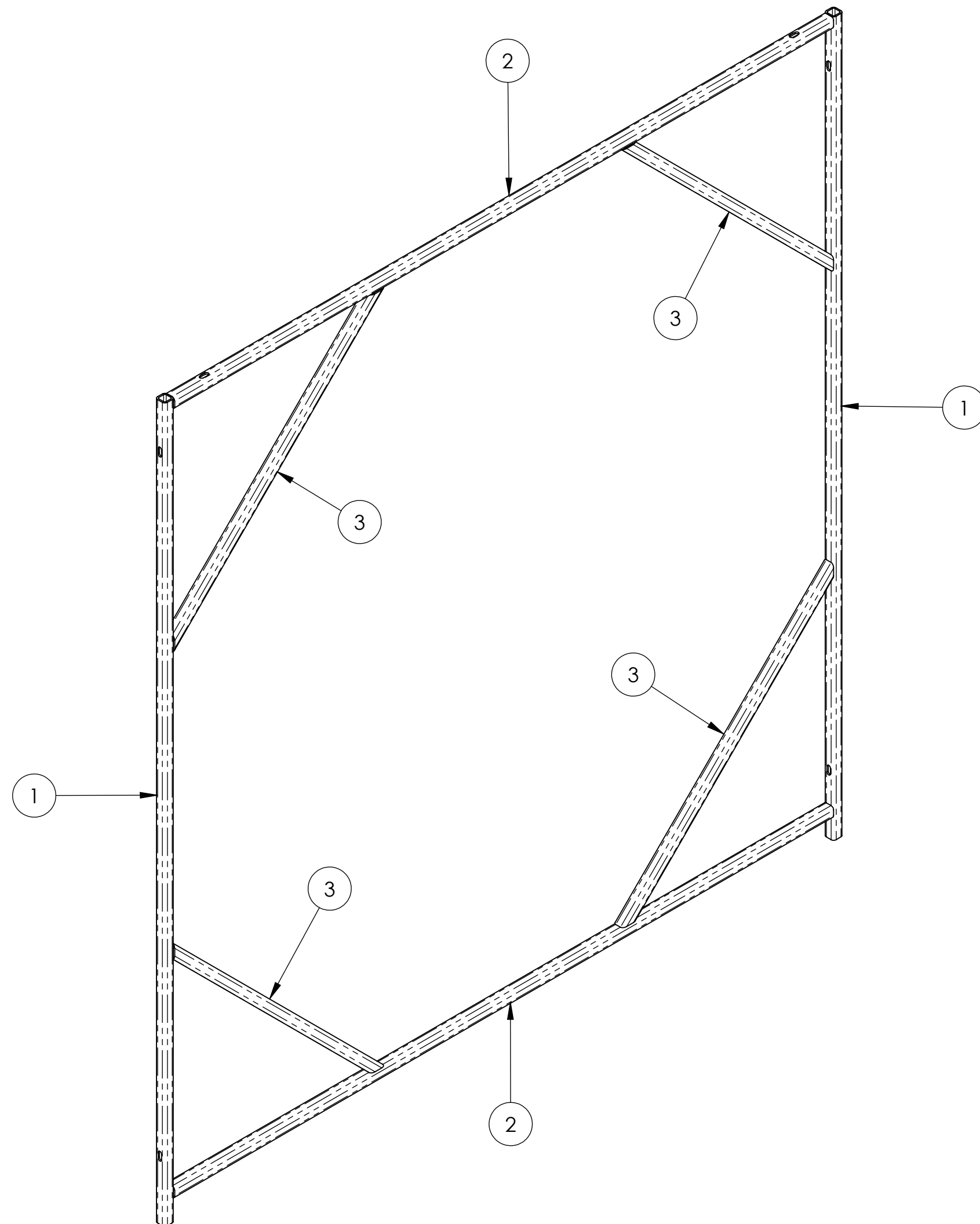


NOTES CONTINUED:

⑤ SCRIBE, ENGRAVE, OR MECHANICALLY STAMP (NO INKS OR DYES) DRAWING PART NUMBER, REVISION (AND VARIANT OR "TYPE" IF APPLICABLE) ON NOTED SURFACE OF PART FOLLOWED ON THE NEXT LINE WITH A THREE DIGIT SERIAL NUMBER. SERIAL NUMBERS START AT 001 FOR THE FIRST ARTICLE AND PROCEED CONSECUTIVELY. USE MINIMUM 0.12" HIGH CHARACTERS, UNLESS THE SIZE OF THE PART DICTATES SMALLER CHARACTERS. A VIBRATORY TOOL MAY BE USED. EXAMPLE: DXXXXXXX-VY, TYPE-XX, S/N XXX

REV.	DATE	DCN #	DRAWING TREE #
v1	07 MAY 2010	E100153	-
-	-	-	-
-	-	-	-



ITEM NO.	QTY.	DESCRIPTION	LENGTH
1	2	TUBE, SQUARE, 0.5 X 0.5 X 0.063	36.25
2	2	TUBE, SQUARE, 0.5 X 0.5 X 0.063	33.5
3	4	TUBE, SQUARE, 0.5 X 0.5 X 0.063	15.14

NOTES AND TOLERANCES: (UNLESS OTHERWISE SPECIFIED)

DIMENSIONS ARE IN INCHES

TOLERANCES:  
 .XX ± .01  
 .XXX ± .005

ANGULAR ± 0.5°

1. INTERPRET DRAWING PER ASME Y14.5-1994.
2. REMOVE ALL SHARP EDGES, R.02 MIN.
3. DO NOT SCALE FROM DRAWING.
4. ALL MACHINING FLUIDS MUST BE FULLY SYNTHETIC, FULLY WATER SOLUBLE AND FREE OF SULFUR, SILICONE, AND CHLORINE.

**MATERIAL** 6063 Al **FINISH** 63 μinch

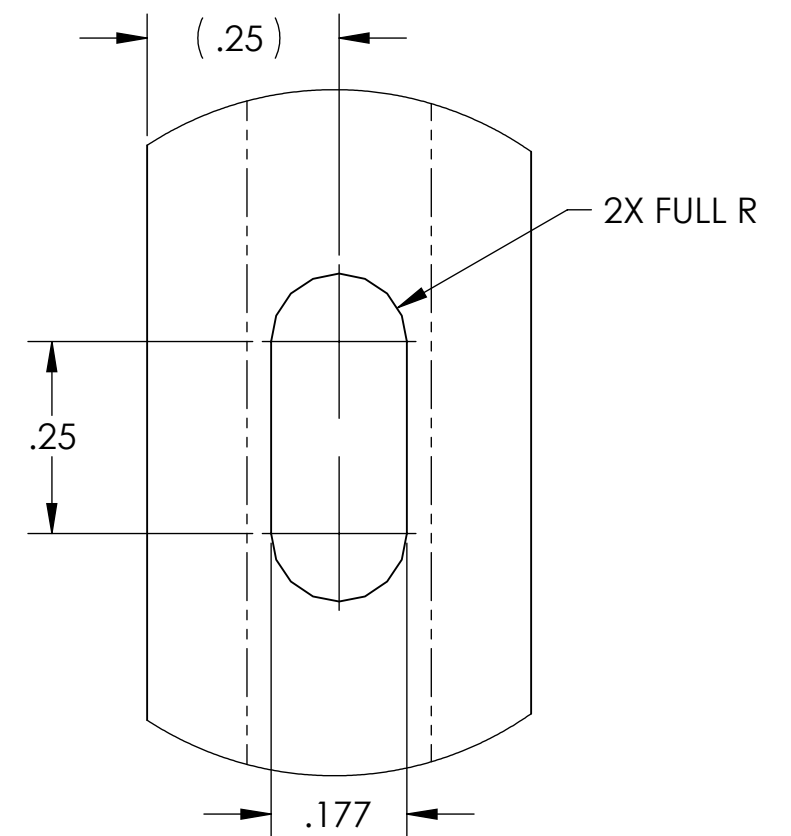
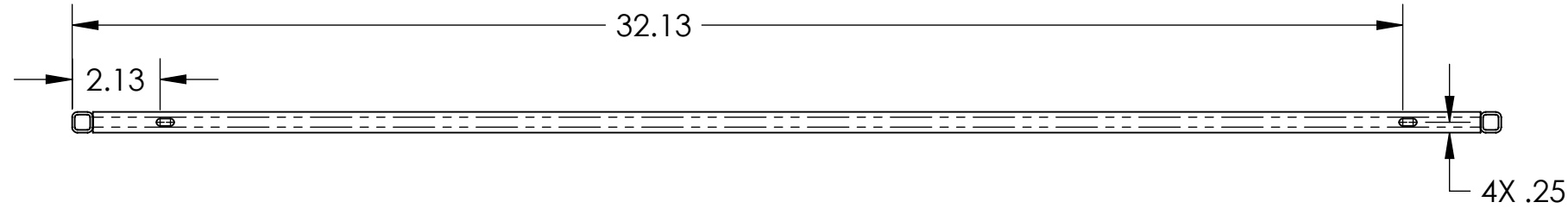
**LIGO** CALIFORNIA INSTITUTE OF TECHNOLOGY  
 MASSACHUSETTS INSTITUTE OF TECHNOLOGY

**SYSTEM** ADVANCED LIGO **SUB-SYSTEM** SUS

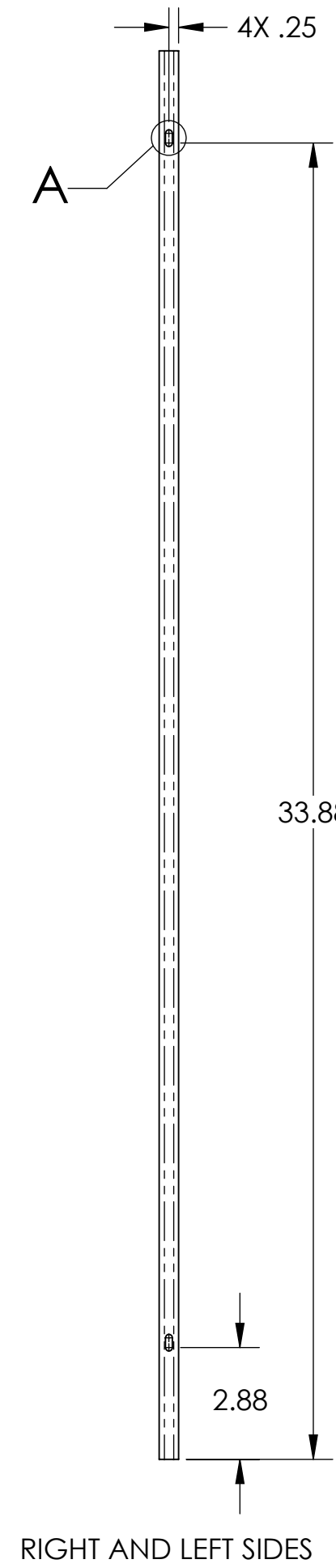
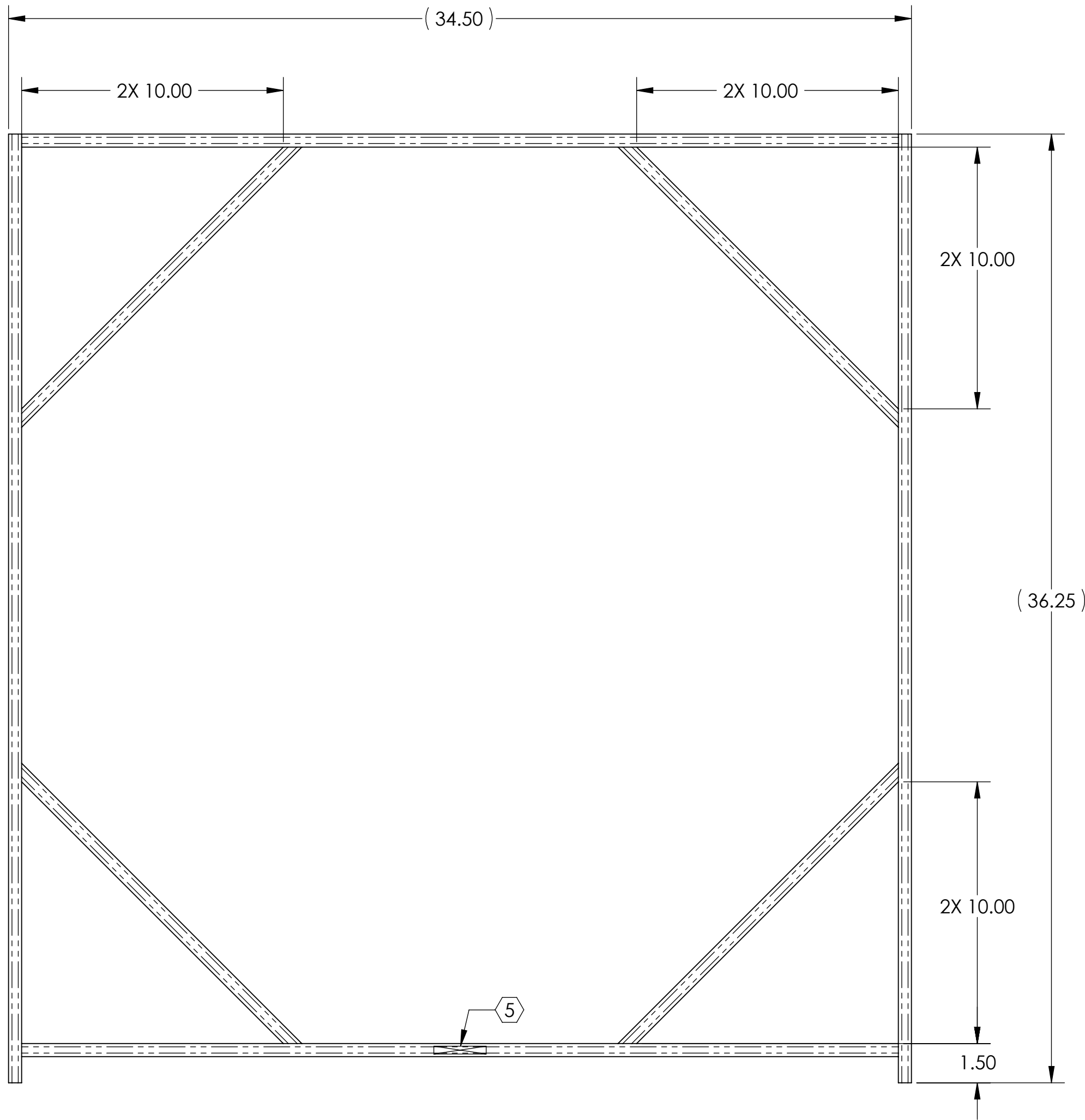
**NEXT ASSY** HAM SUS. TESTING COVER ASSY

**PART NAME** HAM SUS. TESTING COVER DOOR WELDMENT

<b>DESIGNER</b> D. BRIDGES	06 MAY 2010	<b>SIZE</b> c	<b>DWG. NO.</b> D1001085	<b>REV.</b> v1
<b>DRAFTER</b> D. BRIDGES	12 MAY 2010			
<b>CHECKER</b> M. MEYER	13 MAY 2010			
<b>APPROVAL</b>		<b>SCALE:</b> 1:4	<b>PROJECTION:</b>	SHEET 1 OF 2



DETAIL A  
SCALE 4 : 1  
THRU BOTH  
SIDES OF TUBE  
TYP



<b>LIGO</b> CALIFORNIA INSTITUTE OF TECHNOLOGY MASSACHUSETTS INSTITUTE OF TECHNOLOGY		REV. v1
SIZE <b>C</b>	DWG. NO. D1001085	
SCALE: 1:4	PROJECTION:	SHEET 2 OF 2