

8

7

6

5

4

3

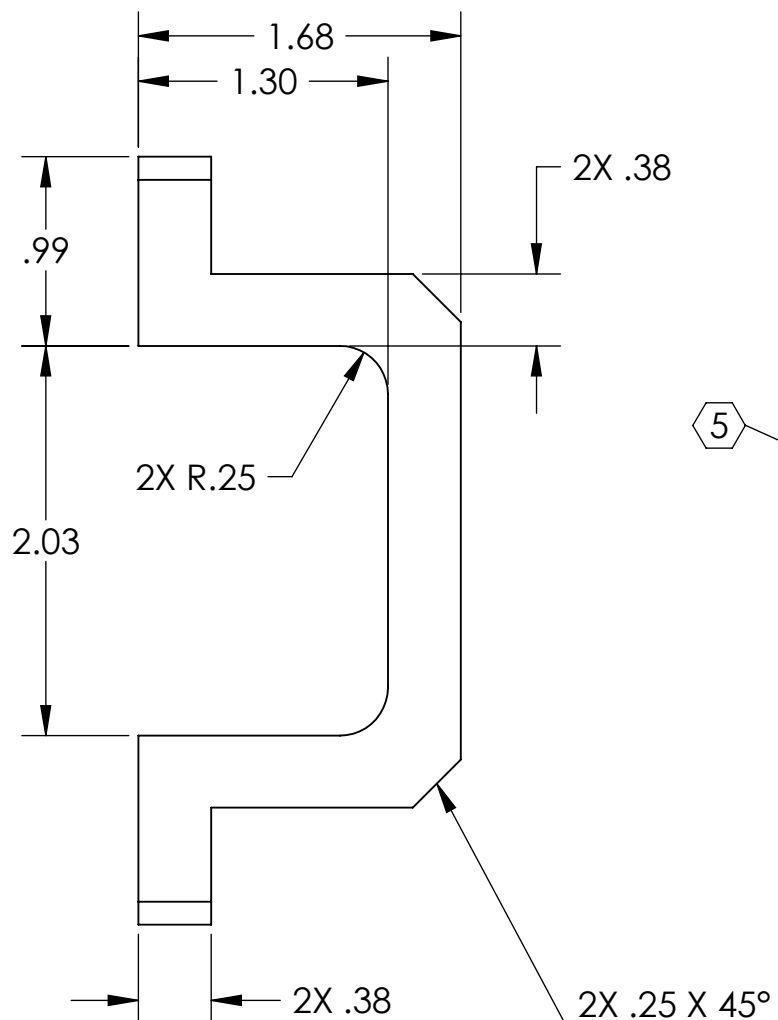
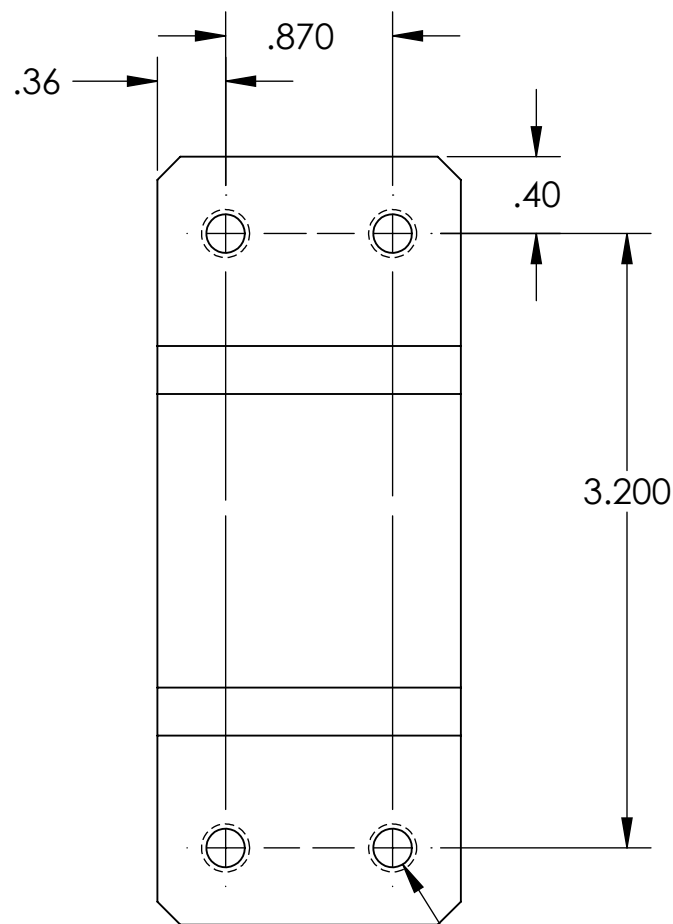
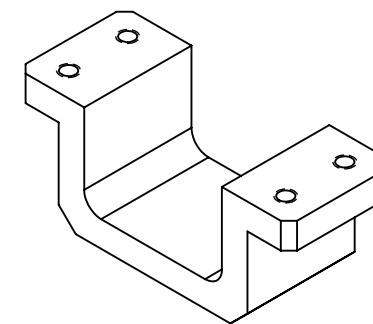
2

1

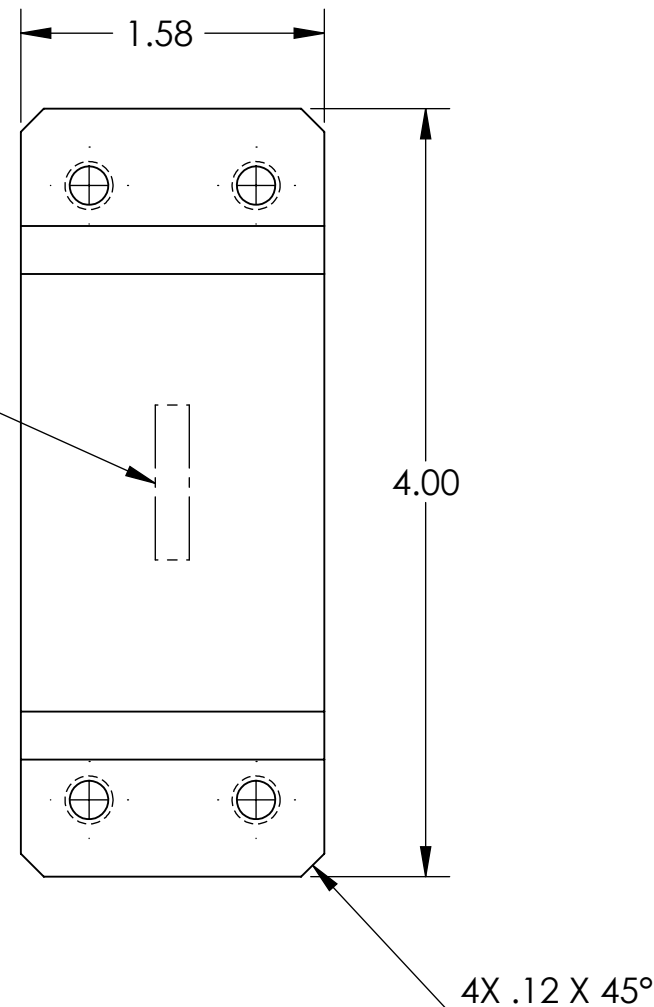
NOTES CONTINUED:

5 SCRIBE, ENGRAVE, OR MECHANICALLY STAMP (NO INKS OR DYES) DRAWING PART NUMBER, REVISION (AND VARIANT OR "TYPE" IF APPLICABLE) ON NOTED SURFACE OF PART FOLLOWED ON THE NEXT LINE WITH A THREE DIGIT SERIAL NUMBER. SERIAL NUMBERS START AT 001 FOR THE FIRST ARTICLE AND PROCEED CONSECUTIVELY. USE MINIMUM 0.12" HIGH CHARACTERS, UNLESS THE SIZE OF THE PART DICTATES SMALLER CHARACTERS. A VIBRATORY TOOL MAY BE USED.  
 EXAMPLE: DXXXXXX-VY, TYPE-XX, S/N XXX

REV.	DATE	DCN #	DRAWING TREE #
V1	10 AUG 2010	E1000493	



5



4X 1/4-20 UNC THRU

D1001060 aLIGO HLTS vibration absorber clamp, PART PDM REV: X-005, DRAWING PDM REV: X-004

NOTES AND TOLERANCES: (UNLESS OTHERWISE SPECIFIED)

DIMENSIONS ARE IN INCHES	
TOLERANCES: .XX ± .01 .XXX ± .005	
ANGULAR ± 0.5°	
1. INTERPRET DRAWING PER ASME Y14.5-1994. 2. REMOVE ALL SHARP EDGES, R.02 MIN. 3. DO NOT SCALE FROM DRAWING. 4. ALL MACHINING FLUIDS MUST BE FULLY SYNTHETIC, FULLY WATER SOLUBLE AND FREE OF SULFUR, SILICONE, AND CHLORINE.	
MATERIAL	6061-T6 Al
FINISH	63 μinch

CALIFORNIA INSTITUTE OF TECHNOLOGY MASSACHUSETTS INSTITUTE OF TECHNOLOGY		PART NAME	
SYSTEM <b>ADVANCED LIGO</b>		SUB-SYSTEM SUS	
NEXT ASSY		D1002424	

DESIGNER K. BUCKLAND 3 MAY 2010		SIZE DWG. NO. <b>B</b> D1001060		REV. v1	
DRAFTER K. BUCKLAND 4 MAY 2010		CHECKER F. MATICHARD 6 OCT 2010		APPROVAL C. TORRIE 6 OCT 2010	
SCALE: 1:1		PROJECTION:		SHEET 1 OF 1	

8

7

6

5

4

3

2

1