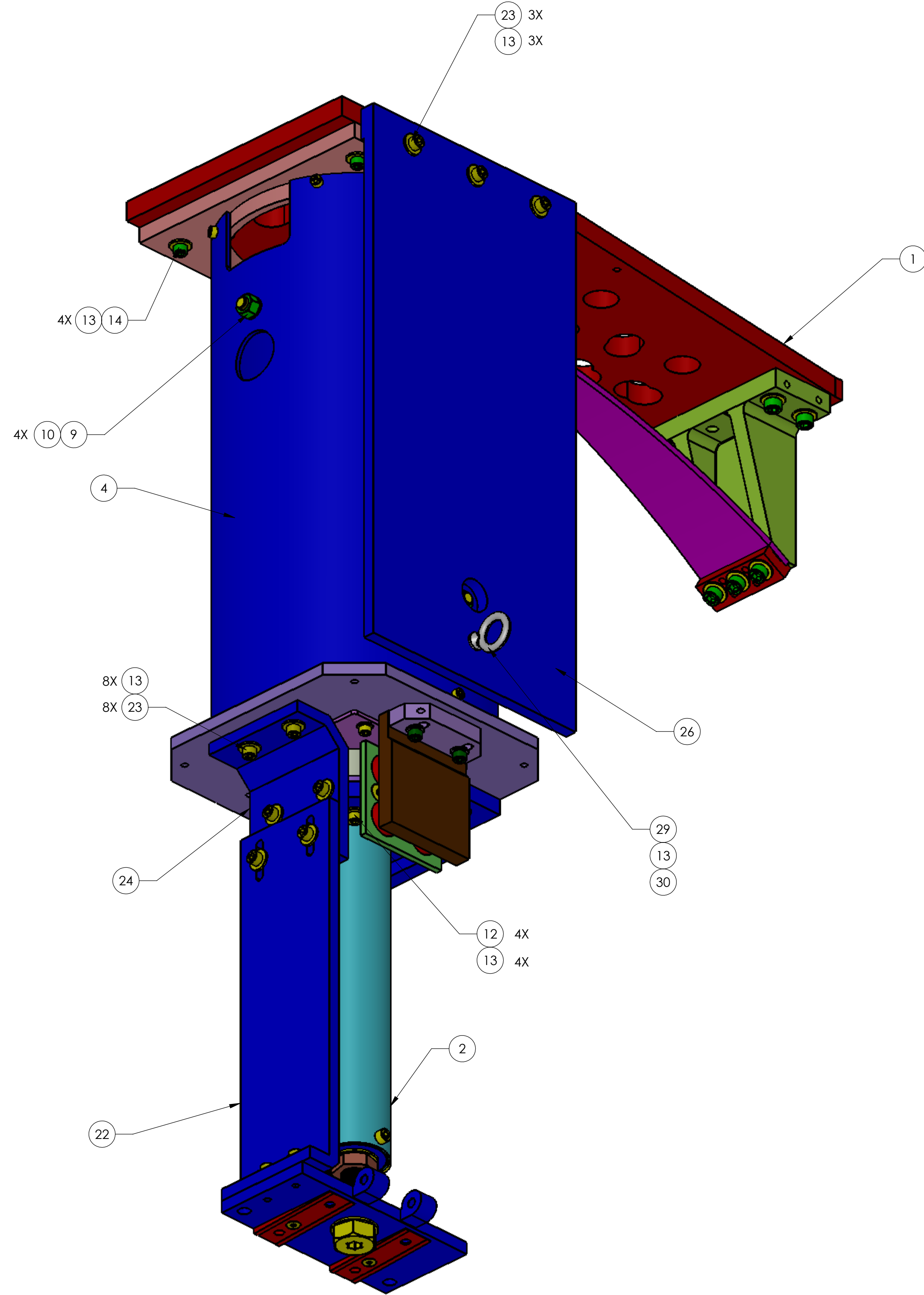


NOTES CONTINUED:



FINAL ALIGNMENT - SWING BACK

REV.	DATE	DCN #	DRAWING TREE #
v1	25 AUG 2010	E1100216	E1000663
v2	09 SEP 2011	E1100335	E1000663
v3	16 Nov. 2011	E1100335	E1000663

30	N-2520-A	UC-COMP, HEX NUT, .25-20	Ag-PLATED 300 SSSL	1
29	33045T770	Eyebolt, .25-20 x 1" Lg.,	304 SSSL	1
28	D1101288	ALIGNMENT FIXTURE, TUBE UP ASSEMBLY	N/A	1
27	92200A541	SHCS, .25-20 x .88, 300 SSSL, MS16995-51	300 SSSL	10
26	D1101597	PLATE, SWINGBACK, ACB	6061-T6 Al	1
25	D1101285	TRANSPORT, LOCKING, ACB	6061-T6 Al	1
24	D1102323	BRKT, VARIABLE HEIGHT ADJ	6061-T6 Al	1
23	92200A540	SHCS, 1/4-20 X 3/4" LG. MS16995-50 (OR EQUIV)	18-8 SSSL	11
22	D1102321	HEIGHT, ADJUSTMENT, VARIABLE	6061-T6 Al	1
21	D1101578	HEIGHT, ADJUSTMENT, ACB	6061-T6 Al	1
20	N-1024-A	HEX NUT, #10-24, AG PLATED,(OR EQUIVALENT)	18-8 SSSL	1
19	98019A330	WASHER #10, NASM 15795-808	300 SSSL	5
18	92200A242	SOCKET HEAD SCREW, #10-24 X .50 LG (MS16995-36)	300 SSSL	4
17	FA-1008-N	SCREW, FHCS, 10-32 X 1/2" LG.	18-8 SSSL	2
16	98017A220	WASHER #3/4, MCMMASTER	300 SSSL	3
15	D1102316	NUT, HEX, #10-24 X .375, NI-CU	NICKEL-COPPER ALLOY 400	2
14	C-2016-NA	SOCKET HEAD CAP SCREW, .25-20 X 1 LG	Ag-PLATED 300 SSSL	4
13	98019A355	WASHER FLAT, 1/4" MIL-15795-810	300 SSSL	30
12	C-2016-N	SCREW SHCS, 1/4-20 X 1" LG	18-8 SSSL	4
11	95412A651	THREADED STUD .375-16 X 9, McMASTER	18-8 SSSL	2
10	98017A200	FLAT WASHER, 3/8, (NAS 1149-C0663R OR EQUIV)	300 SSSL	4
9	N-3816-A	HEX NUT, .375-16	Ag-PLATED 300 SSSL	4
8	D1001120	SLC EARTHQUAKE STOP RING	6061-T6 Al	2
7	D1100243	ACB HINGE SHIM	304 SSSL	2
6	D1001621	ARM CAVITY BAFFLE UPPER MOUNTING HINGE	6061-T6 Al	1
5	D1001186	SCREW #3/4-10 X 4_McMaster 92240A849	18-8 SSSL	1
4	D1002564	SLC EDDY CURRENT DAMPING 8 DIA TUBE ASSY	N/A	1
3	D1002582	SLC BAFFLE TUBE UP ASSEMBLY	N/A	1
2	D1001007	ALIGO AOS, SLC ACB LO TUBE ASSY	N/A	1
1	D1001005	ARM CAVITY BAFFLE BLADE ASSY	N/A	1
ITEM NO.	PART NUMBER	DESCRIPTION	MATERIAL	Default/REQ

NOTES AND TOLERANCES: (UNLESS OTHERWISE SPECIFIED)

DIMENSIONS ARE IN INCHES
 TOLERANCES:
 .XX ± .02
 .XXX ± .010
 ANGULAR ± 0.5°

MATERIAL N/A FINISH N/A μinch

LIGO CALIFORNIA INSTITUTE OF TECHNOLOGY
 MASSACHUSETTS INSTITUTE OF TECHNOLOGY

SYSTEM ADVANCED LIGO SUB-SYSTEM AOS

NEXT ASSY D0901376

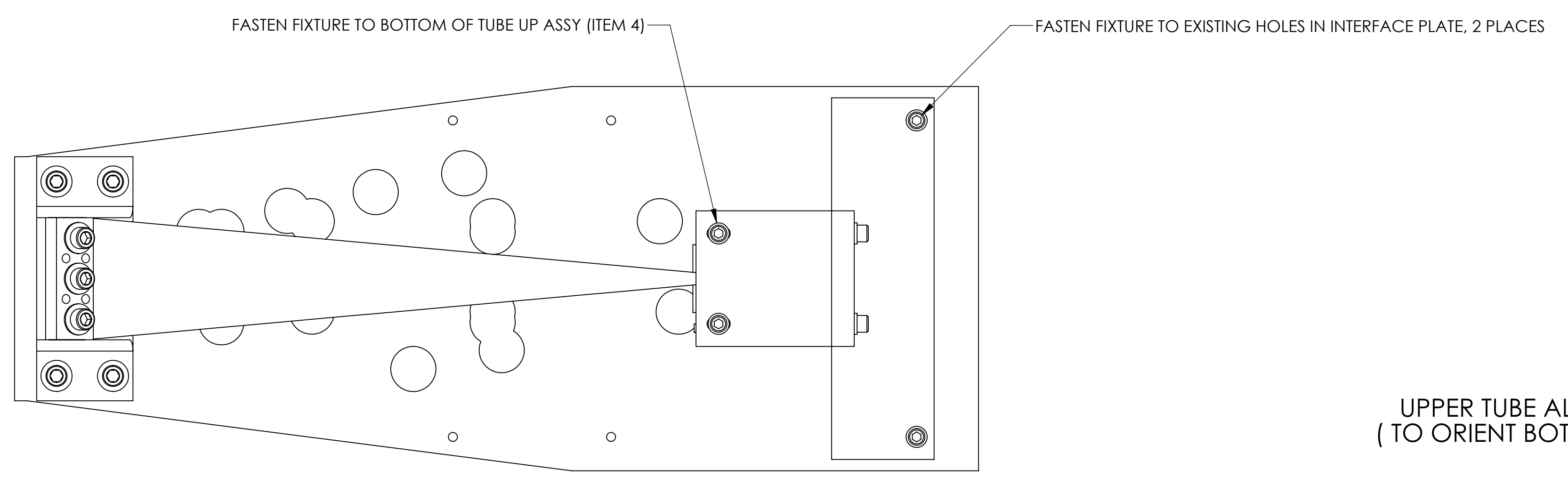
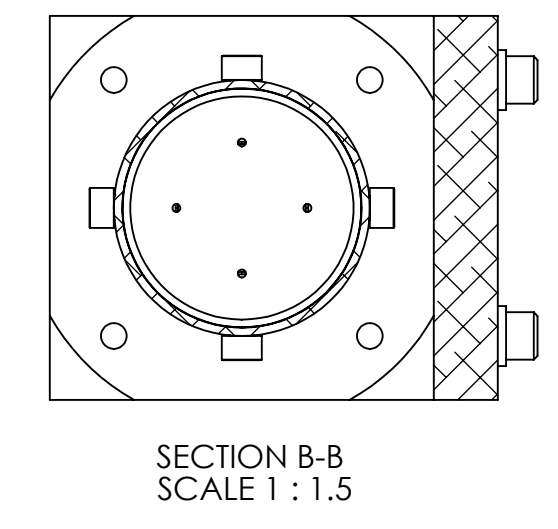
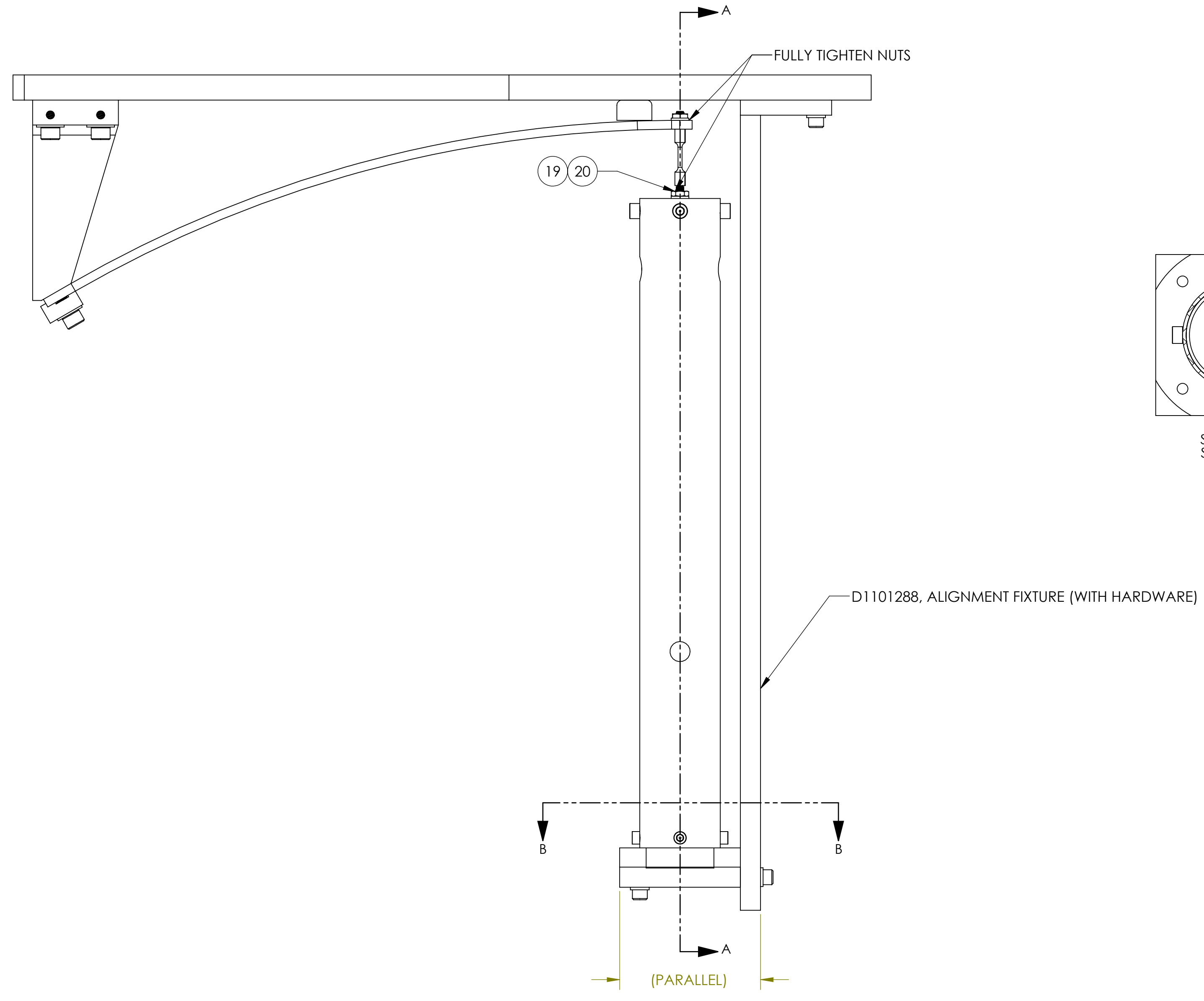
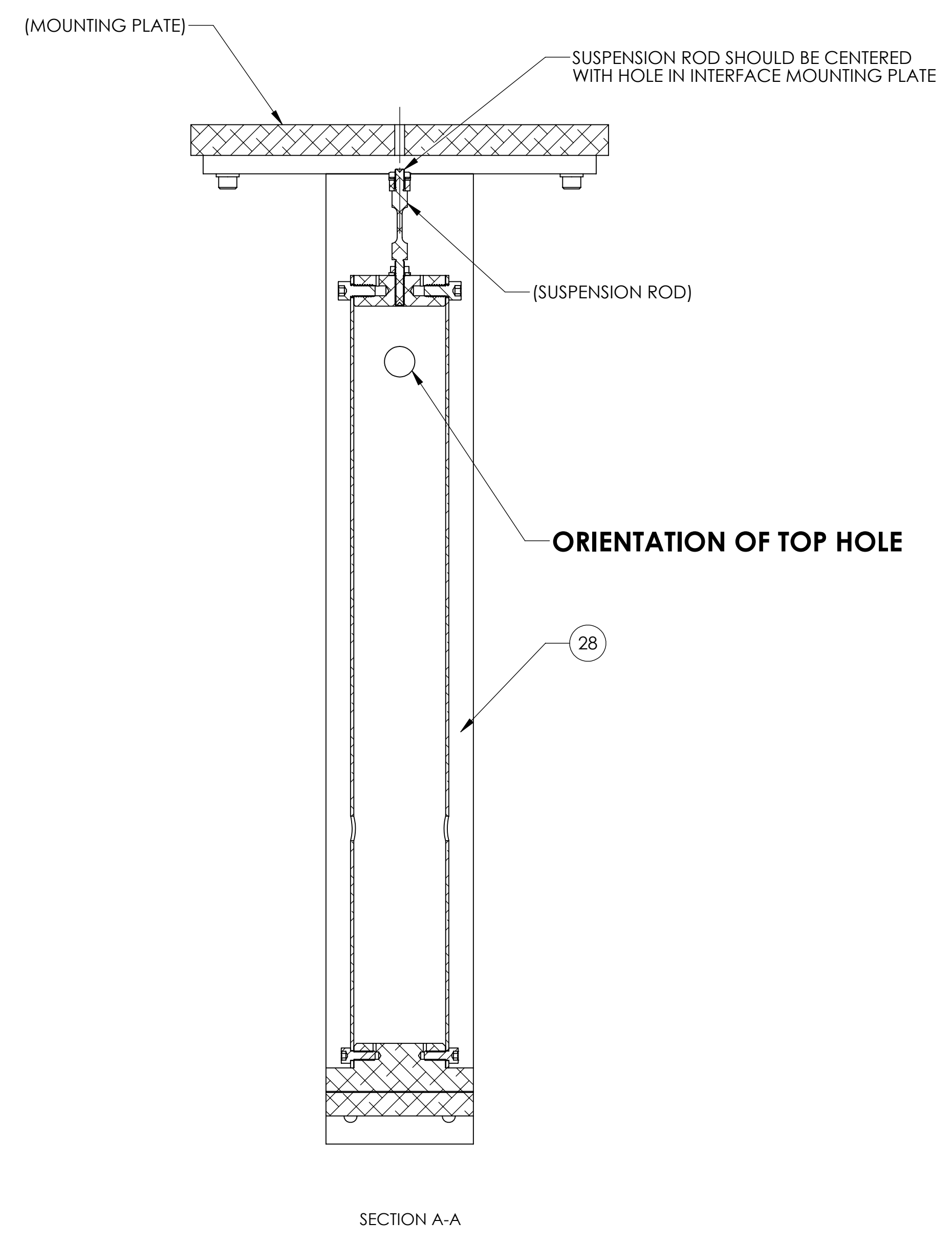
PART NAME
ARM CAVITY BAFFLE SUSPENSION ASSY

DESIGNER	N.Nguyen	02 AUG 2010	SIZE	D	DWG. NO.	D1001011	REV.	v3
DRAFTER	N.Nguyen	25 AUG 2010						
CHECKER	M.Smith	10 NOV 2010						
APPROVAL	D. Coyne	20 NOV 2010	SCALE:	1:2	PROJECTION:			SHEET 1 OF 3

D1001011_AdiLIGO_AOS_SLC_ARM_Cavity_Baffle_Assy_PART_PDM_REV_X.102_DRAWING_PDM_REV_X.033

8 7 6 5 4 3 2 1

H
G
F
E
D
C
B
A



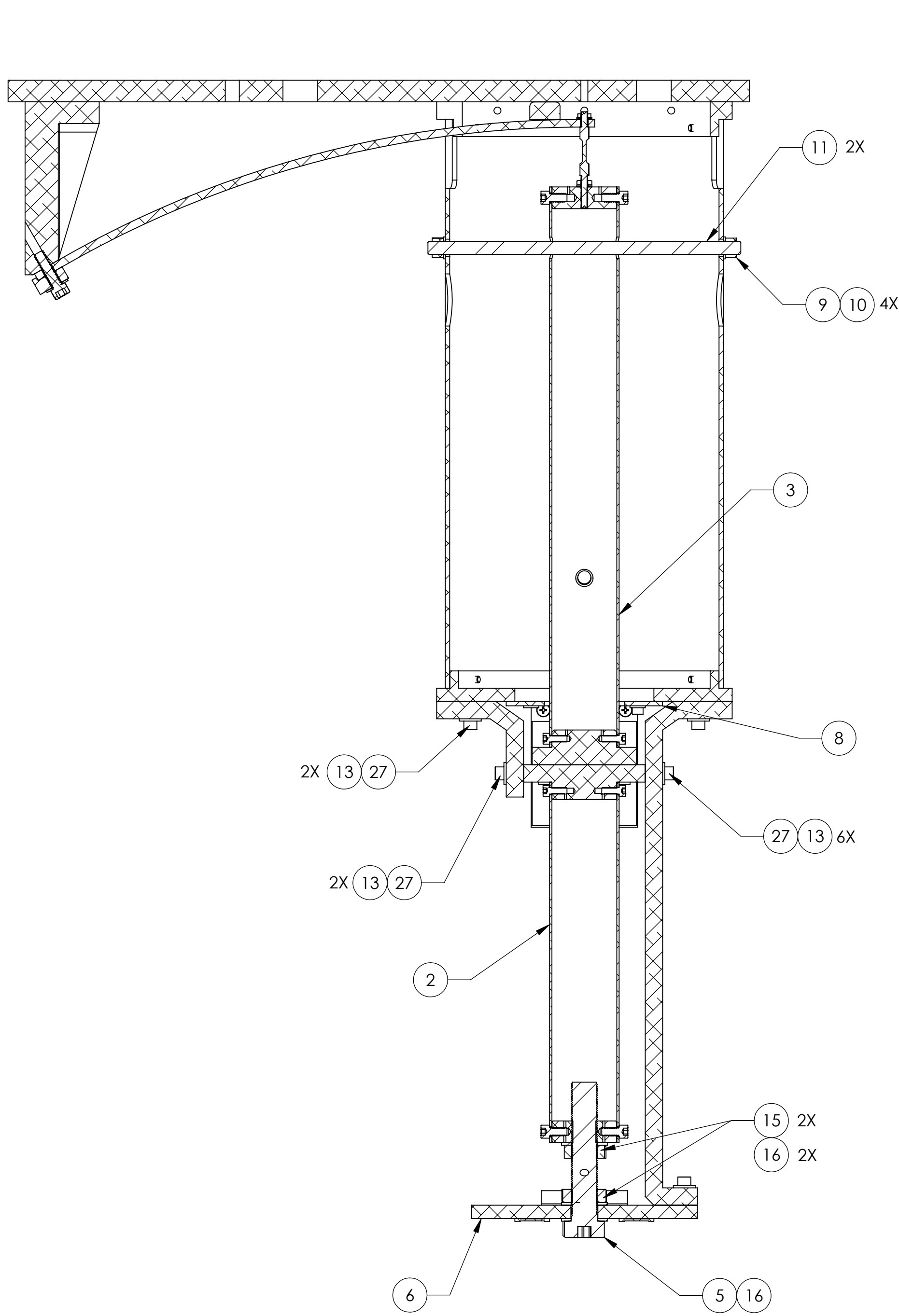
UPPER TUBE ALIGNMENT TOOLING
(TO ORIENT BOTTOM OF ITEM 4 ASSY)

LIGO CALIFORNIA INSTITUTE OF TECHNOLOGY MASSACHUSETTS INSTITUTE OF TECHNOLOGY		
SIZE	DWG. NO.	REV.
D	D1001011	v3
SCALE: 1:2	PROJECTION:	SHEET 2 OF 3

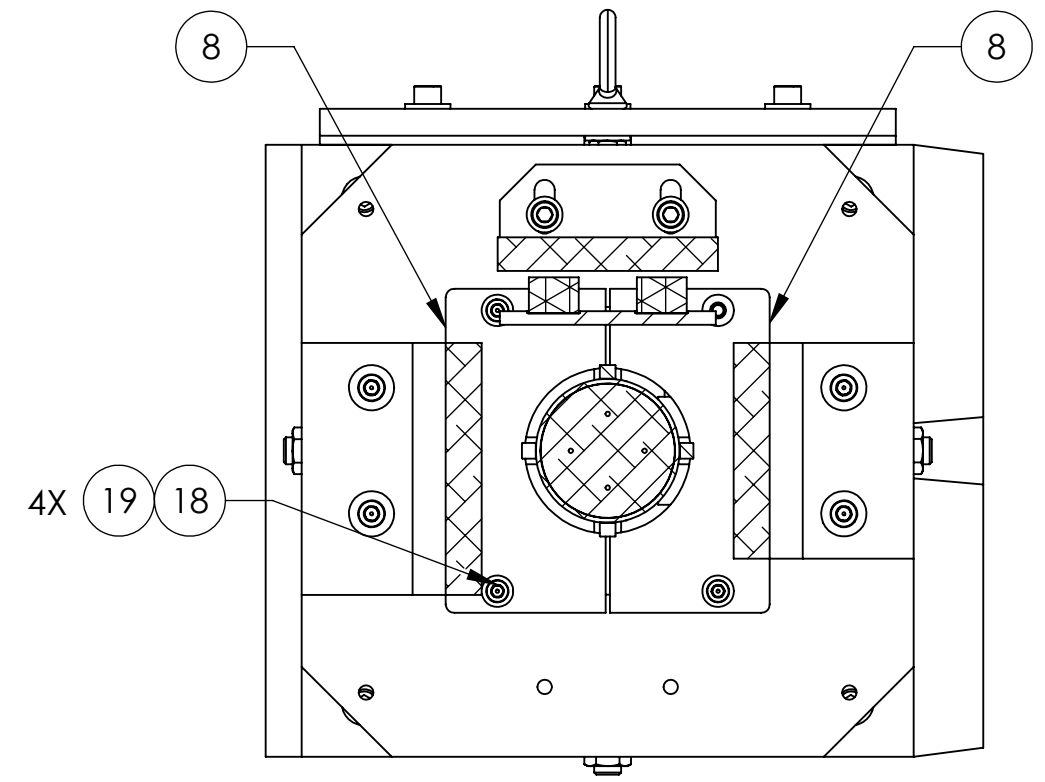
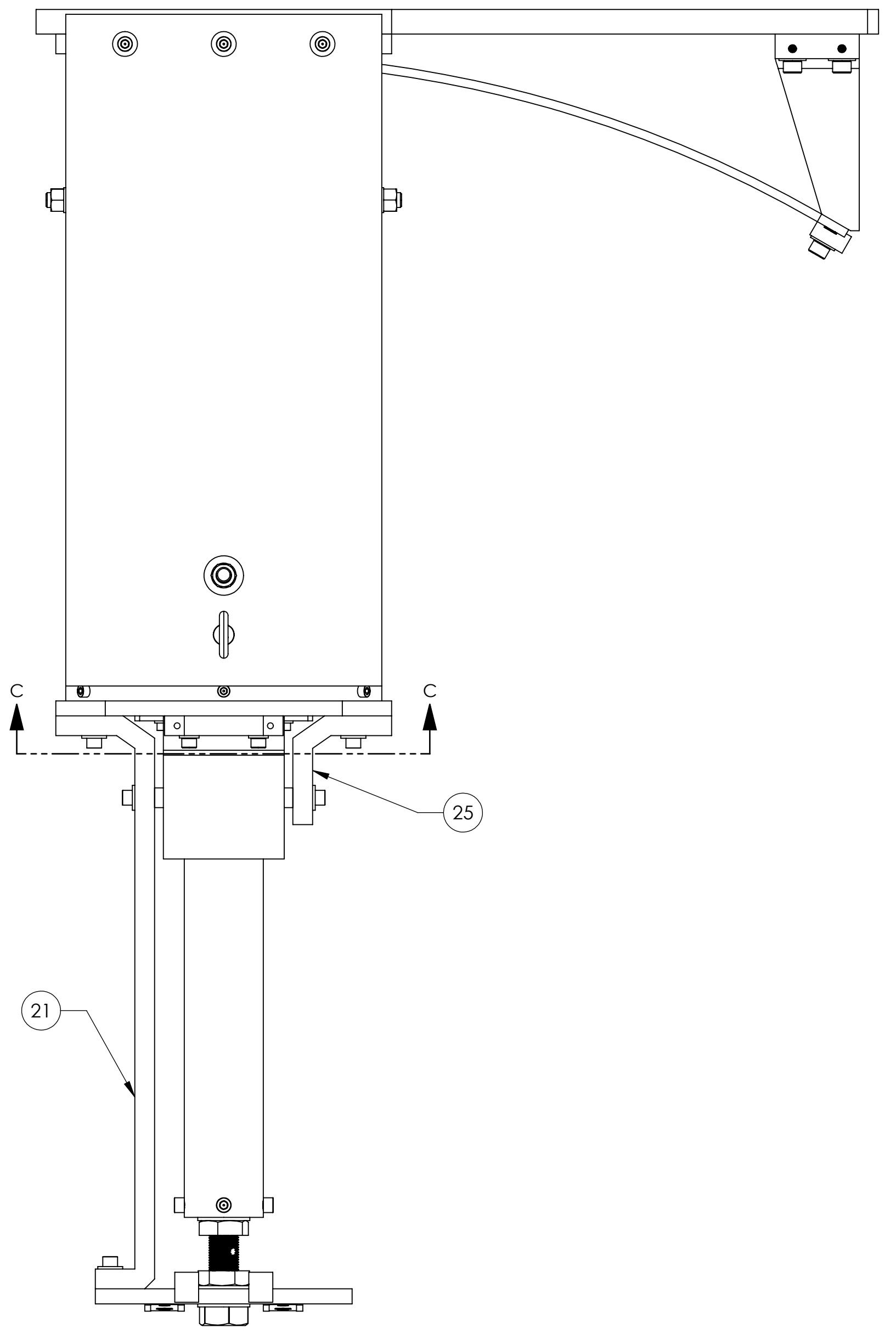
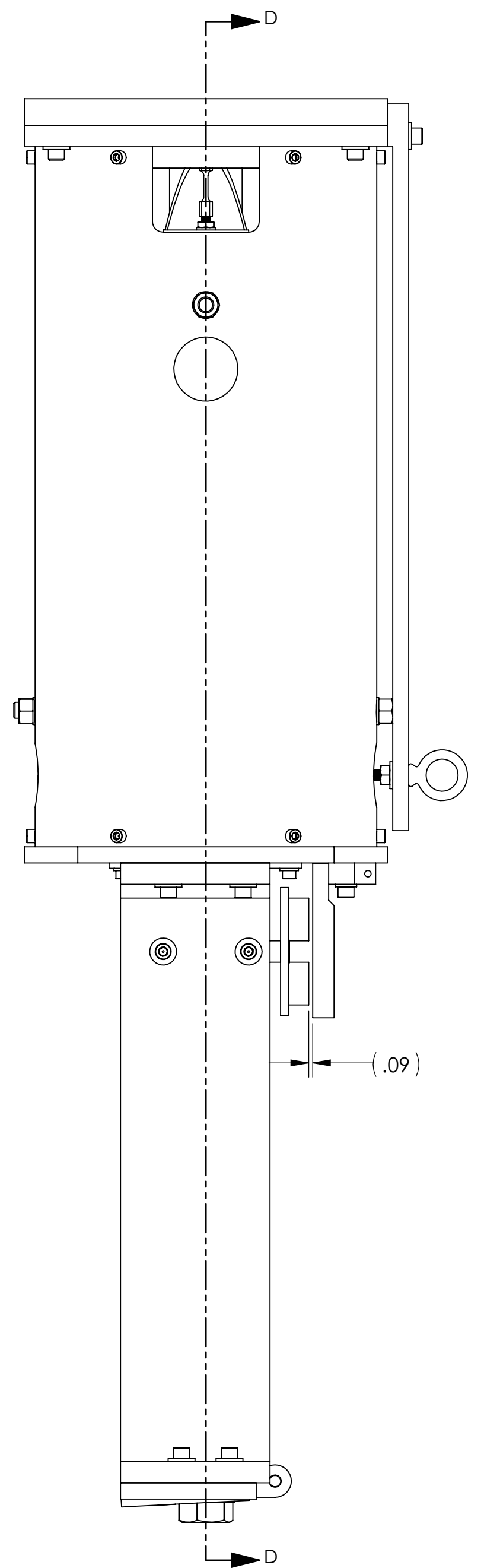
8 7 6 5 4 3 2 1

H
G
F
E
D
C
B
A

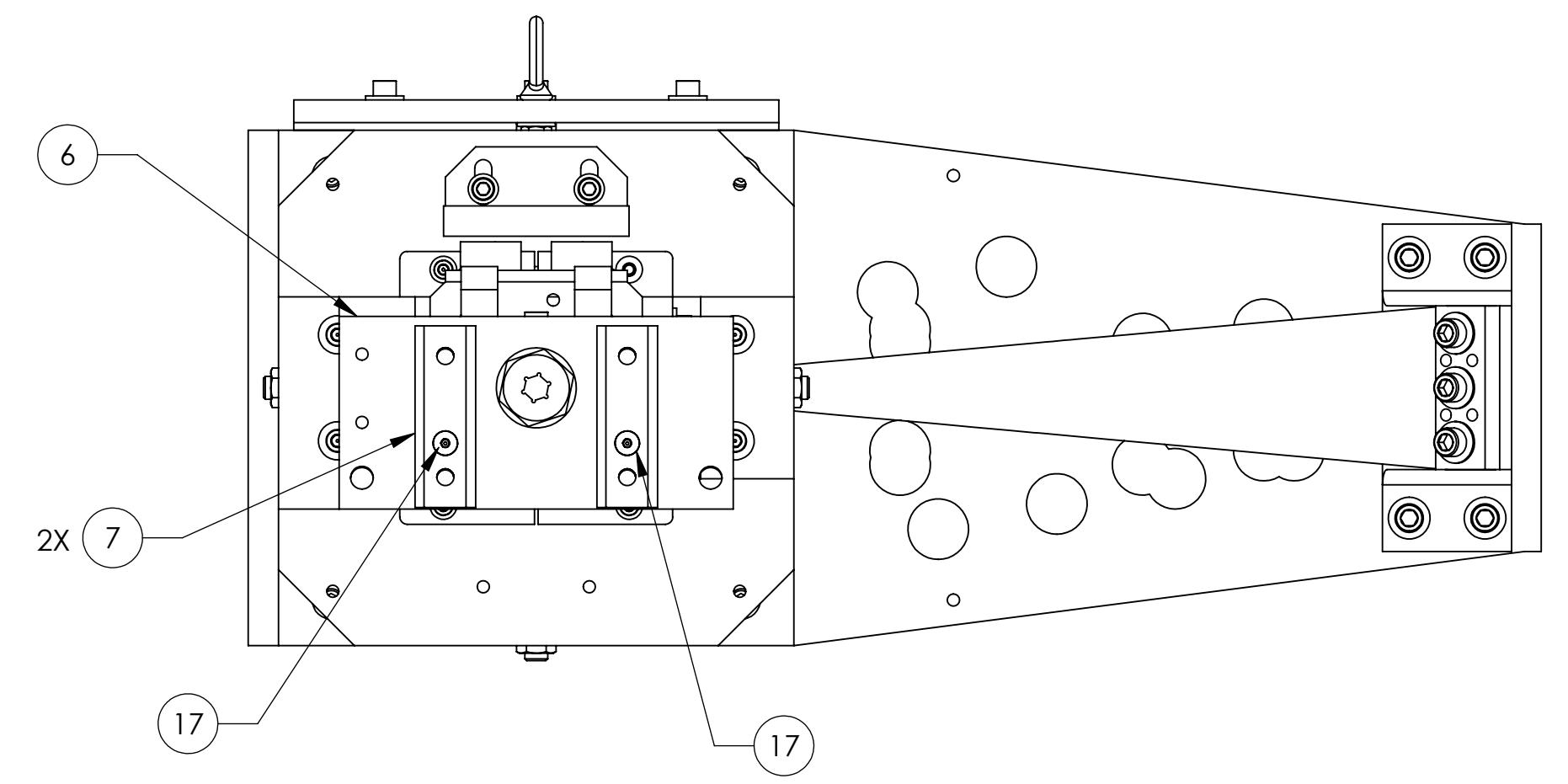
D:\0001011_Adu\GO_LACS_SLC_ARM_Coily_Bottle Assy_PRT_PDM_REV.X-102_DRAWING_PDM_REV.X-033



SECTION D-D
SCALE 3 : 8



SECTION C-C
SCALE 3 : 8



LOWER TUBE LENGTH/
ALIGNMENT TOOLING

CALIFORNIA INSTITUTE OF TECHNOLOGY MASSACHUSETTS INSTITUTE OF TECHNOLOGY		REV.
SIZE	DWG. NO.	REV.
D	D1001011	v3
SCALE: 1:2	PROJECTION:	SHEET 3 OF 3

D1001011_AduIGO_AOS_SLC_ARM_Covily_Baffle Assy. PART PDM REV: X:102, DRAWING PDM REV: X:033