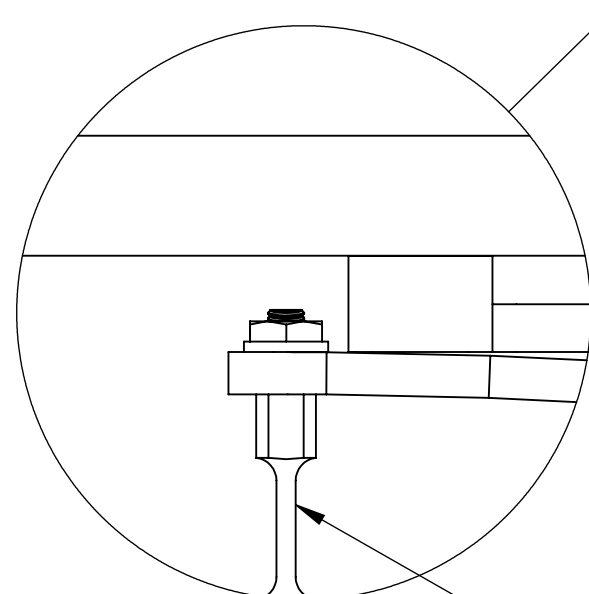
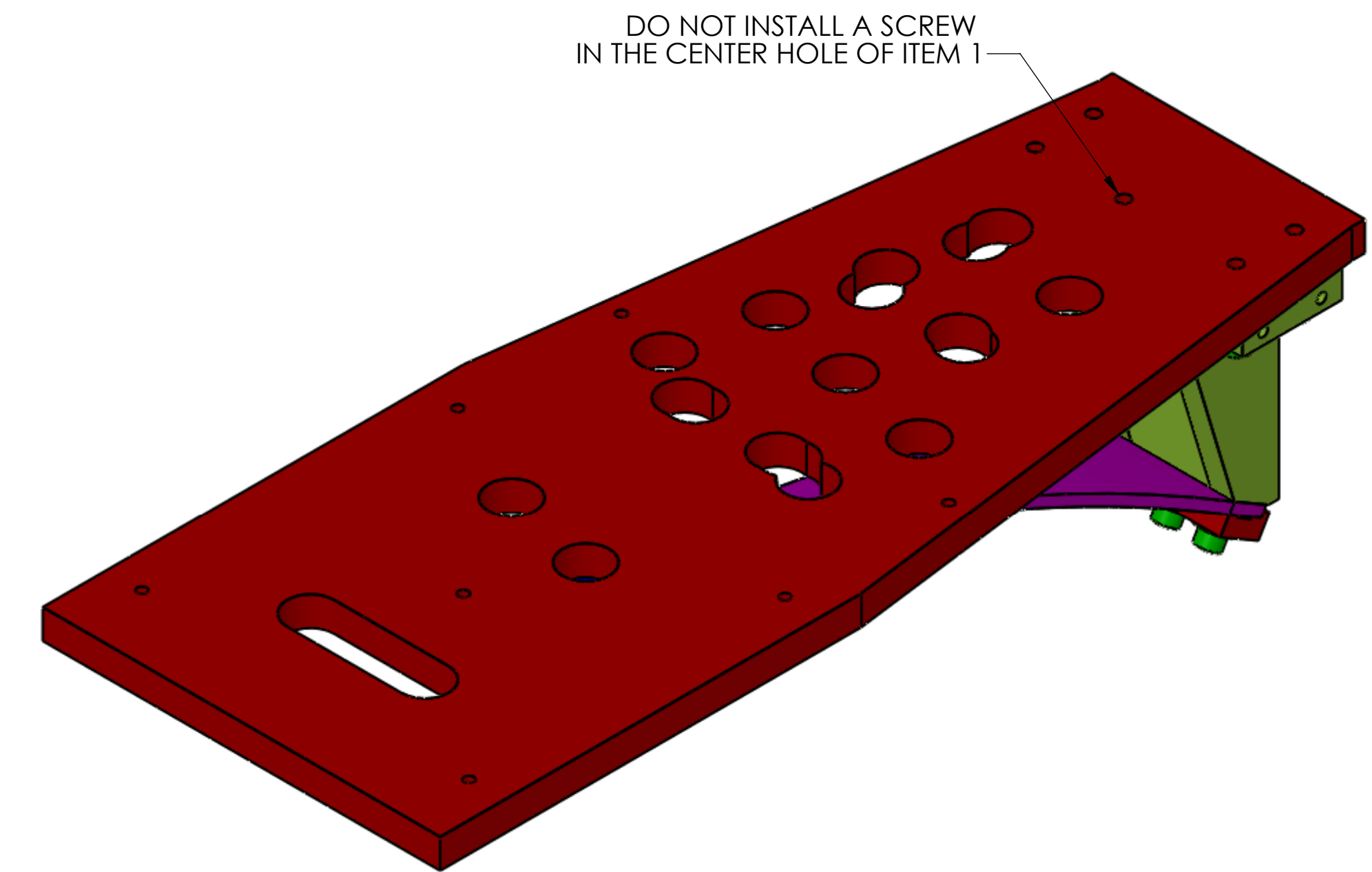
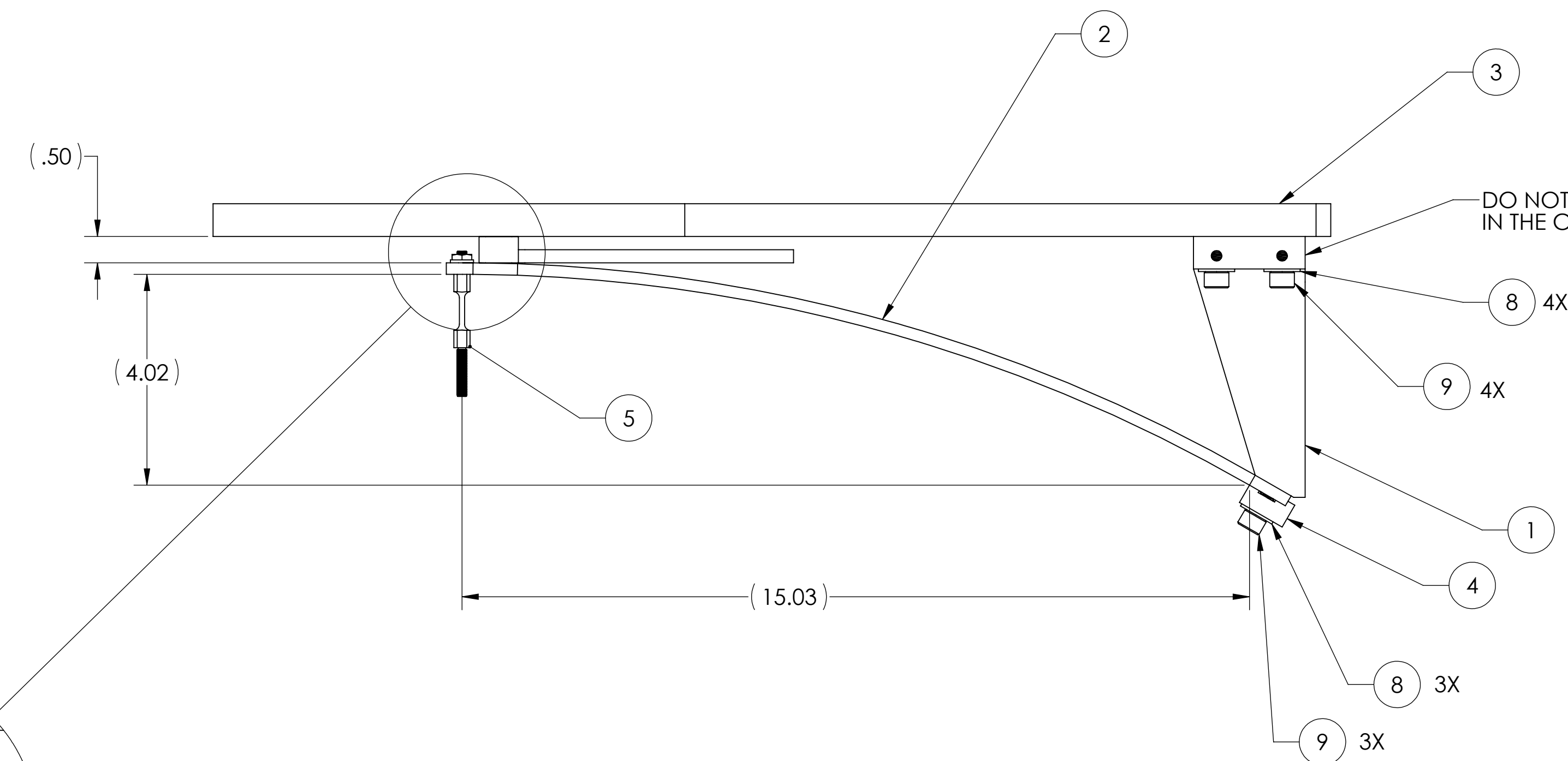


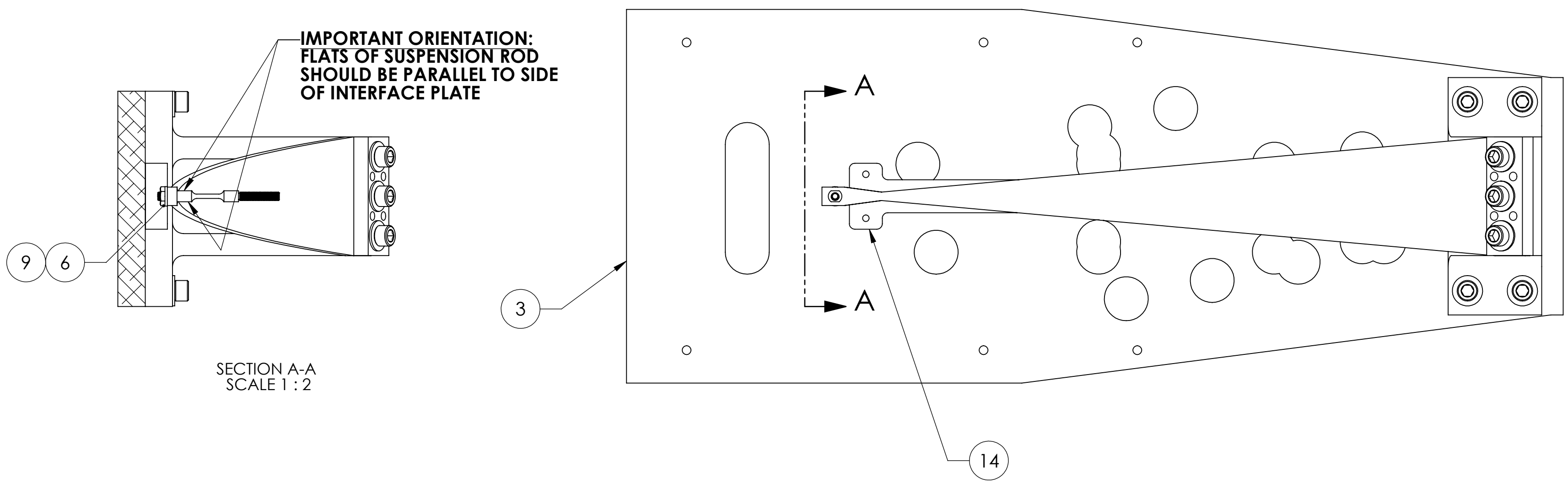
REV.	DATE	DCN #	DRAWING TREE #
v3	02 JUN 2010	E1100216	E1000640
v3	10 SEP 2011	E1100335	E1000640
v4	07 NOV. 2011	E1100335	E1000640
v5	12 NOV 2012	E1100335	E1000640



5 IMPORTANT TO LINE UP ITEM 5 (SLC ACB SUSPENSION ROD) WITH CENTER HOLE OF ITEM 3 (PLATE)

DETAIL A

IMPORTANT ORIENTATION: FLATS OF SUSPENSION ROD SHOULD BE PARALLEL TO SIDE OF INTERFACE PLATE



SECTION A-A SCALE 1:2

ITEM NO.	PART NUMBER	DESCRIPTION	MATERIAL	DEFAULT/ALL PARTS/QTY.	SPARE
14	D1101184	ALIGO ACB BEND FIXTURE PLATE	6061-T6 Al	1	
13	C-2014-A	SCREW, SOCKET HEAD CAP, 1/4-20 UNC-2A X 0.375 LONG, FULLY THREADED	Ag-PLATED 300 SSSL	4	
12	D1101099	ALIGO ACB BEND FIXTURE	6061-T6 Al	1	
11	D1101298	BLADE SPRING BENDING HOOK ASSY	304 SSSL	1	
10	92200A246	SOCKET HEAD CAP SCREW, 10-24 X .875 LG, NAS 1352C-3-14 (OR EQUIV)	300 SSSL	2	
9	C-1820-NA	U-C COMP. 5/16-18 X 1.25L, S.H.C.S.	Ag-PLATED 300 SSSL	7	
8	98019A385	.312 FLAT WASHER, .34 ID X .69 OD X .06 T, NASM 15795-812	300 SSSL	7	
7	N-1024-A	HEX NUT, #10-24, AG PLATED,(OR EQUIVALENT)	18-8 SSSL	1	
6	98019A330	WASHER #10, NASM 15795-808	300 SSSL	1	
5	D1002340	SLC ACB SUSPENSION ROD	316 SSSL	1	
4	D1002844	SLC ACB BLADE CLAMP	304 SSSL	1	
3	D1001138	SLC ACB INTERFACE MTG PLATE	304 SSSL	1	
2	D1002608	SLC ACB SUSPENSION BLADE	MARAGING STEEL C250	1	
1	D1002609	SLC BLADE MOUNTING BRACKET	304 SSSL	1	

NOTES AND TOLERANCES: (UNLESS OTHERWISE SPECIFIED)

DIMENSIONS ARE IN INCHES

TOLERANCES:
 .XX ± .03
 .XXX ± .010
 ANGULAR ± 0.5°

MATERIAL	N/A	FINISH	N/A μinch
----------	-----	--------	-----------

LIGO CALIFORNIA INSTITUTE OF TECHNOLOGY
 MASSACHUSETTS INSTITUTE OF TECHNOLOGY

SYSTEM: ADVANCED LIGO SUB-SYSTEM: AOS

PART NAME: **ARM CAVITY BAFFLE BLADE ASSY**

DESIGNER	N.Nguyen	20 Aug 2010	SIZE	DWG. NO.	REV.
DRAFTER	TQ. NGUYEN	28 MAY 2010	D	D1001005	v5
CHECKER	M. SMITH	10 NOV 2010			
APPROVAL	D. COYNE	20 NOV 2010	SCALE: 1:1	PROJECTION:	SHEET 1 OF 2

D:\001_005_AduLIGO_AOS_SLC_ARM_Cavity_Baffle_Blade Assy_PART PDM REV: X-086_DRAWING PDM REV: X-037

8

7

6

5

4

3

2

1

H

G

F

E

D

C

B

A

H

G

F

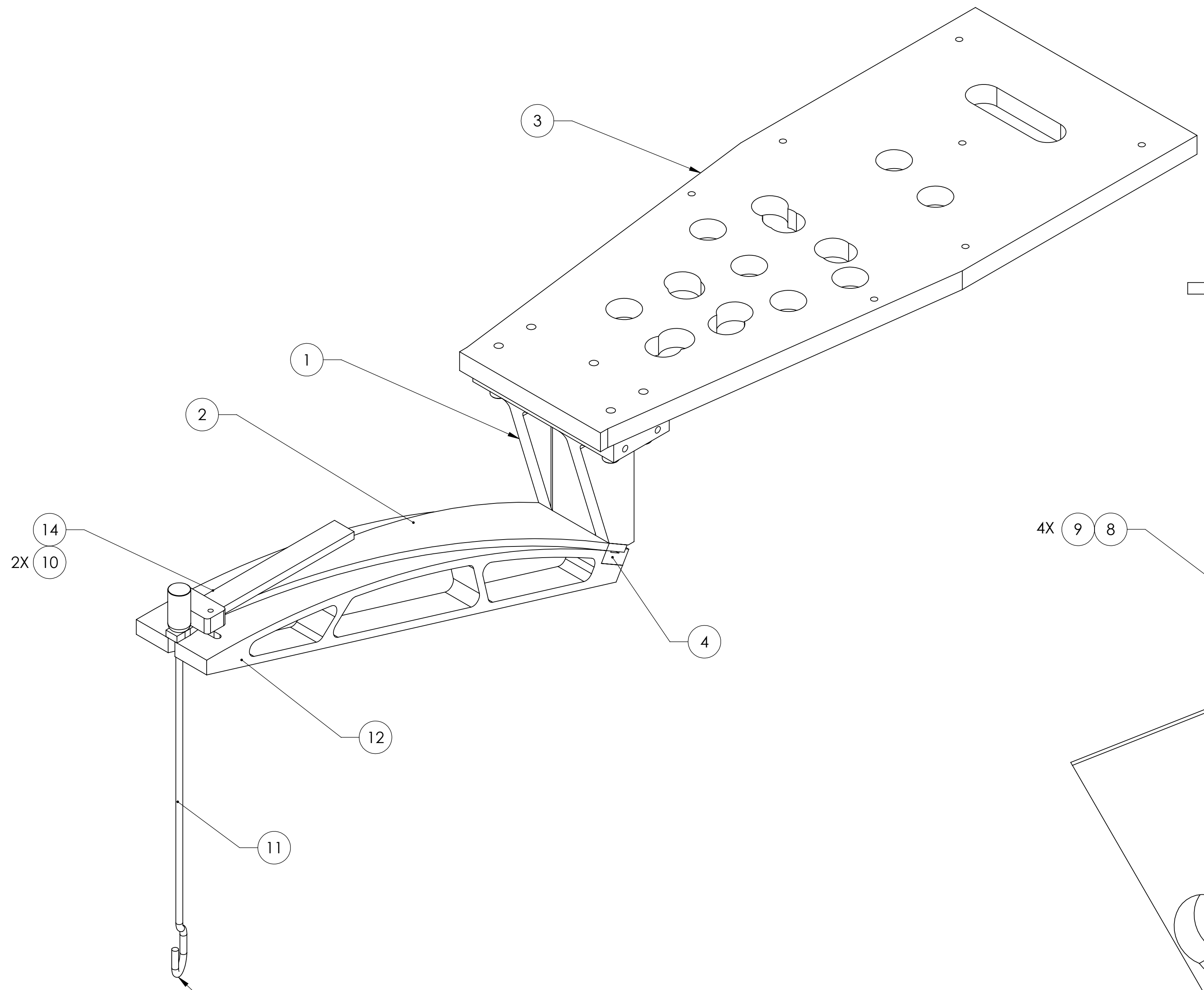
E

D

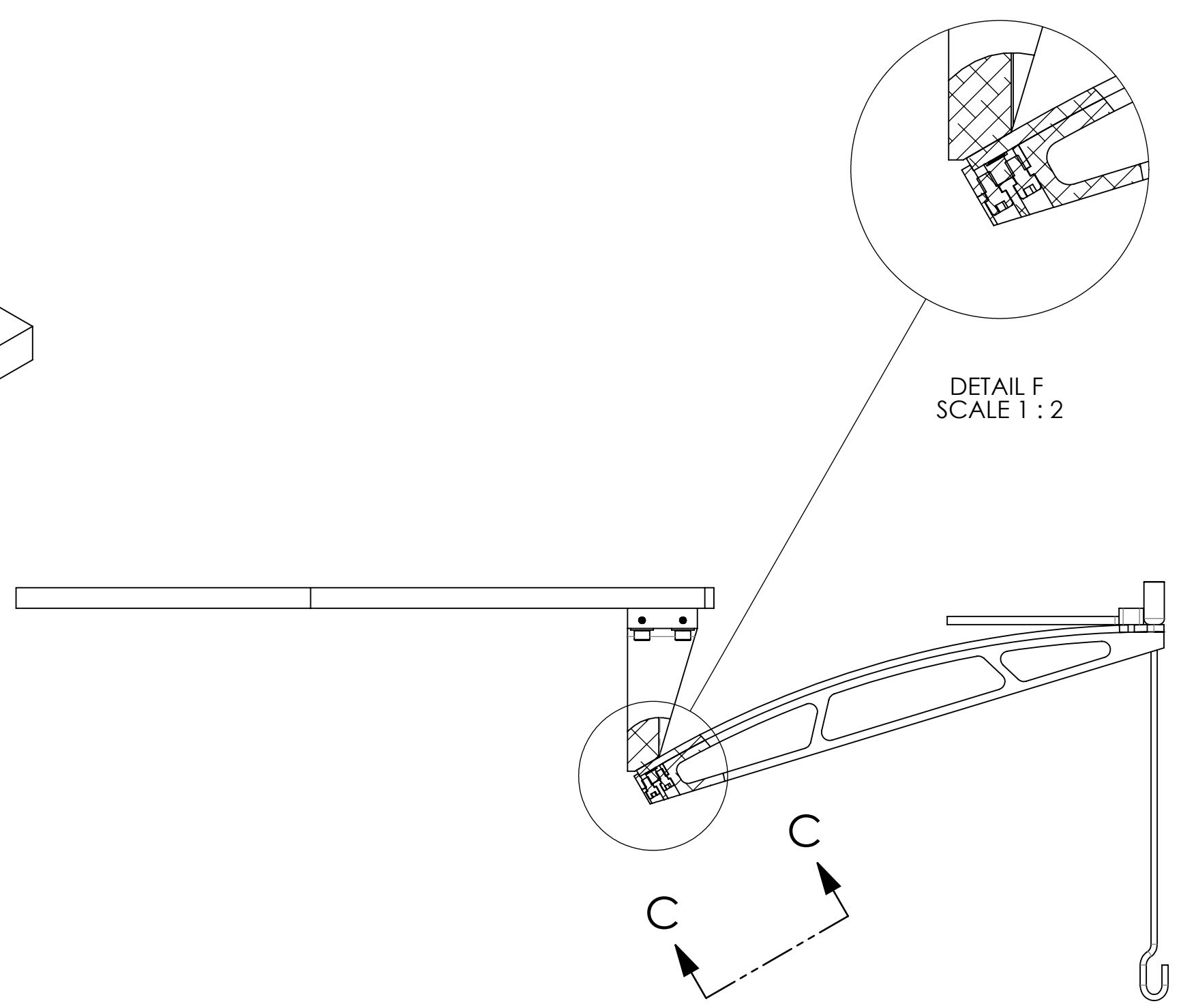
C

B

A

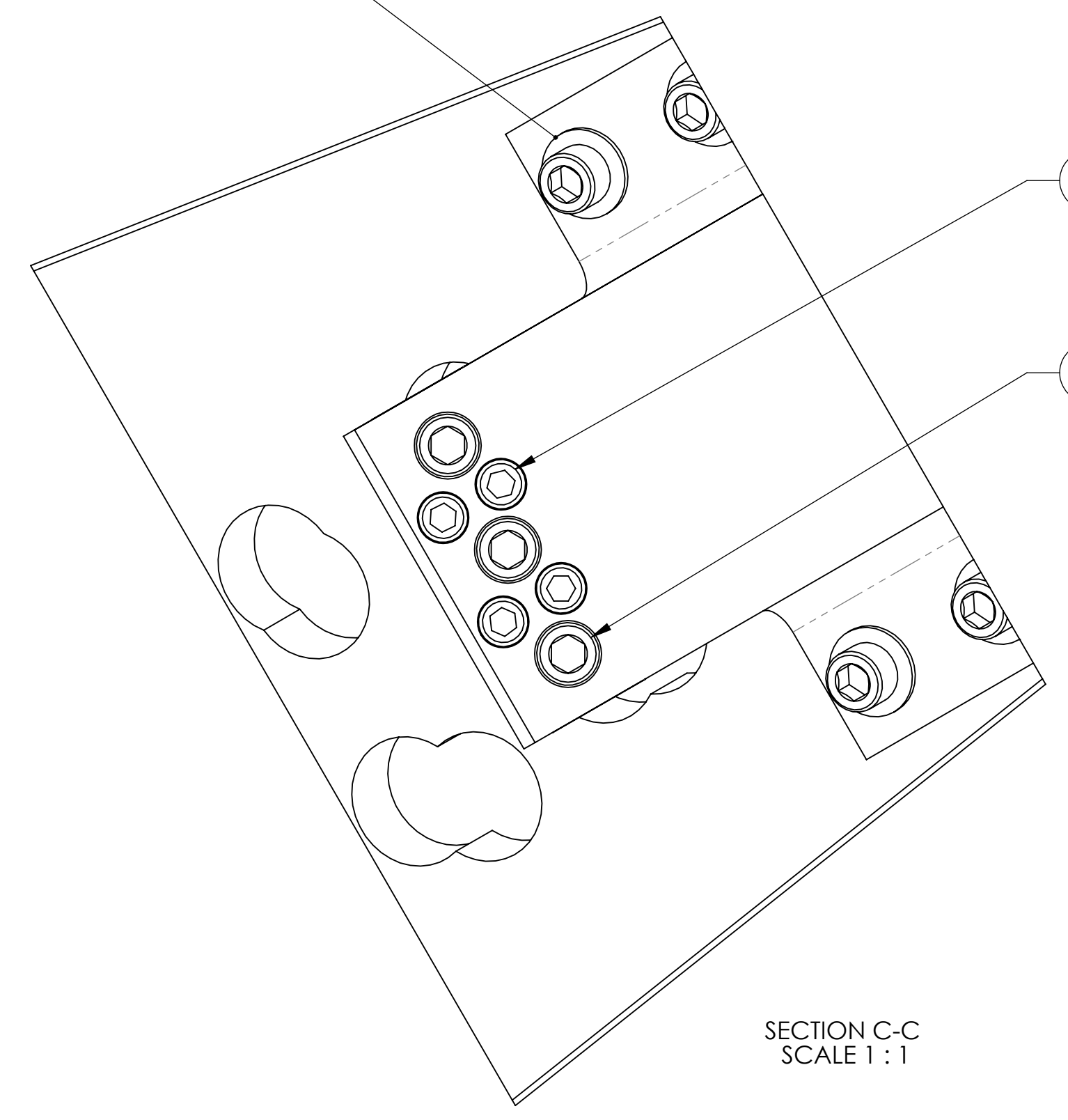


ADD WEIGHTS (~130 LB.) TO BEND SUSPENSION BLADE



DETAIL F
SCALE 1 : 2

4X 9 8



SECTION C-C
SCALE 1 : 1

13 4X

9 3X

BLADE BENDING CONFIGURATION
REFER TO E1100867 FOR DETAILS

CALIFORNIA INSTITUTE OF TECHNOLOGY MASSACHUSETTS INSTITUTE OF TECHNOLOGY		REV.
SIZE	DWG. NO.	REV.
D	D1001005	v5
SCALE: 1:4	PROJECTION:	SHEET 2 OF 2

D1001005_AduLIGO_AOS_S1C_ARM_Coily_Bottle_Blade Assy. PART PDM REV. X-866. DRAWING PDM REV. X-037