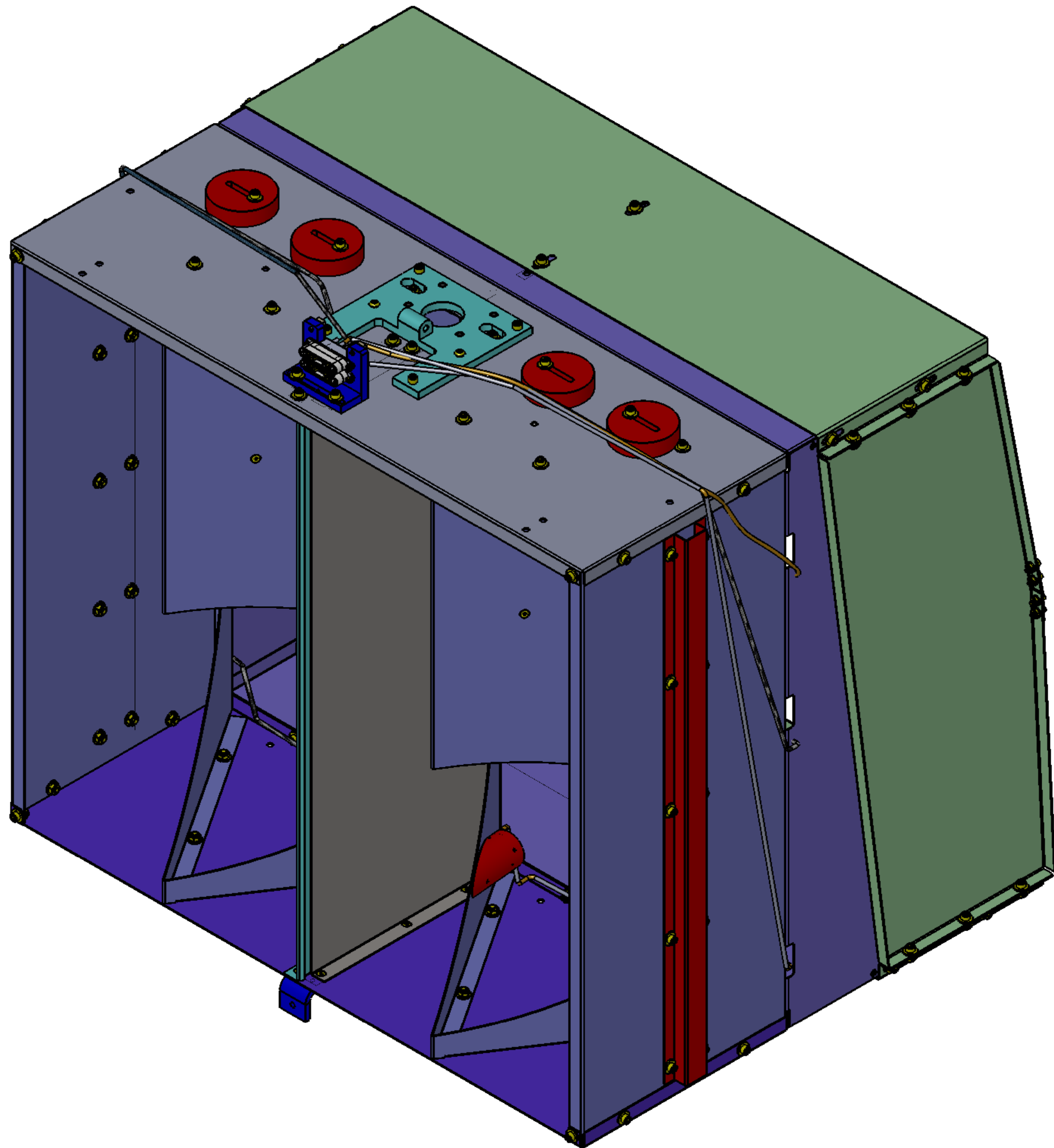


NOTES CONTINUED:
 ① SCREWS MUST BE OXIDIZED BY MEANS OF AIR FURNACE.

REV.	DATE	DCN #	DRAWING TREE #
v1	07 APR 2011	E1100216	E1000668
v2	18 Aug. 2011	E1100216	E1000668
v3	28 SEP 2011	E1100335	E1000668
v4	18 Oct. 2011	E1100335	E1000668
v5	16 DEC 2011	E1100335-v4	-



ITEM NO.	PART NUMBER	DESCRIPTION	MATERIAL	BSC8-H2 48mm/QTY.
36	F402-003C	HALF CLIP, 3/16"	SSTL	AR
35	F442-003C	J-CLIP, 3/8"	SSTL	AR
34	92196A114	SHCS 4-40 x 7/8" L	18-8 SSTL	4
33	92200A541	SHCS, .25-20 x .88, 300 SSTL, MS16995-51	300 SSTL	2
32	92200A544	SCREW, SHC, .25-20 X 1.25 LG., MS16995-53	300 SSTL	4
31	98019A330	WASHER #10, NASM 15795-808	300 SSTL	34
① 30	FA-606-NA	FHSC, 6-32 X 3/8 LG, AG PLATED	18-8 SSTL	24
29	92200A242	McMASTER, SOCKET HEAD CAP SCREW, 10-24 X .50 LG, MS 16995-36 (OR EQUIV)	300 SSTL	8
28	BU-2012-N	SCREW, BUTTON HD, SOC, .25-20 X 3/4" LG.	18-8 SSTL	2
① 27	94518A418	FHSC, 10-24 X 3/4 LG, MS24671-22 (OR EQUIV.)	300 SSTL	18
26	92200A540	SHCS, 1/4-20 X 3/4" LG, MS16995-50 (OR EQUIV)	18-8 SSTL	4
25	N-1024-A	HEX NUT, #10-24, AG PLATED,(OR EQUIVALENT)	18-8 SSTL	26
24	98019A355	WASHER FLAT, 1/4" MIL-15795-810	300 SSTL	200
23	C-2008-NA	SHCS, 1/4-20 x .50 AG PLATED	18-8 SSTL	12
22	C-2008-N	SCREW SHCS, 1/4-20 UNC-2A X 1/2" LG, FULL THREAD	300 SSTL	85
21	N-2520-A	U-C COMP. NUT, HEX .25-20 SILVER PLATED, 18-8 SSTL	18-8 SSTL	97
20	D1100391	ACB SHELF ASSY	N/A	1
19	D1003013	ARM CAVITY BAFFLE PD ASSY	N/A	8
18	D1003111	SLC PHOTODETECTOR CABLE LOWER ASSY	N/A	2
17	D1003025	PD HOUSING	304 SSTL	8
16	D1101427	BRACE, LIFTING, ARM CAVITY BAFFLE	6061-T6 Al	1
15	D1002173	ARM CAVITY BAFFLE HINGE ASSY	N/A	1
14	D1001826	SLC ACB BALANCING WEIGHT	304 SSTL	4
13	D1100353	ACB LEFT SIDE EXTENDER	18 GAUGE 304 SSTL	1
12	D1100458	SLC ACB BOTTOM EXTENDER	18 GAUGE 304 SSTL	1
11	D1100354	ACB RIGHT SIDE EXTENDER	18 GAUGE, 304 SSTL	1
10	D1100288	SLC ACB TOP EXTENDER	18 GAUGE 304 SSTL	1
9	D1001346	αLIGO, ASSY, CABLE BRACKET, HAM TABLE	N/A	1
8	D1101234	ACB STIFFENER SIDE EXTENDER	6061-T6 Al	2
7	D1101796	ARM CAVITY BAFFLE CTR, MIRROR SKIN	18 GAUGE, 304 SSTL	1
6	D1001363	ACB SIDE REINFORCING HATSECTION	304 SSTL	2
5	D1001365	ARM BAFFLE MIDDLE REINFORCING PLATE	18 GAUGE 304 SSTL	2
4	D1000976	ARM CAVITY BAFFLE CTR SKIN	18 GAUGE 304 SSTL	1
3	D1000974	ARM CAVITY BAFFLE TOP SKIN	18 GAUGE 304 SSTL	1
2	D1000975	ARM CAVITY BAFFLE BTM SKIN	18 GAUGE 304 SSTL	1
1	D1000973	ARM CAVITY BAFFLE SKIN	18 GAUGE, 304 SSTL	1
ITEM NO.	PART NUMBER	DESCRIPTION	MATERIAL	BSC8-H2 48mm/QTY.

NOTES AND TOLERANCES: (UNLESS OTHERWISE SPECIFIED)

DIMENSIONS ARE IN INCHES
 TOLERANCES:
 .XX ± N/A
 .XXX ± N/A
 ANGULAR ± N/A °

MATERIAL BOM FINISH N/A

LIGO CALIFORNIA INSTITUTE OF TECHNOLOGY
 MASSACHUSETTS INSTITUTE OF TECHNOLOGY

SYSTEM ADVANCED LIGO SUB-SYSTEM AOS
 NEXT ASSY D0901376

PART NAME
ARM CAVITY BAFFLE BOX ASSY

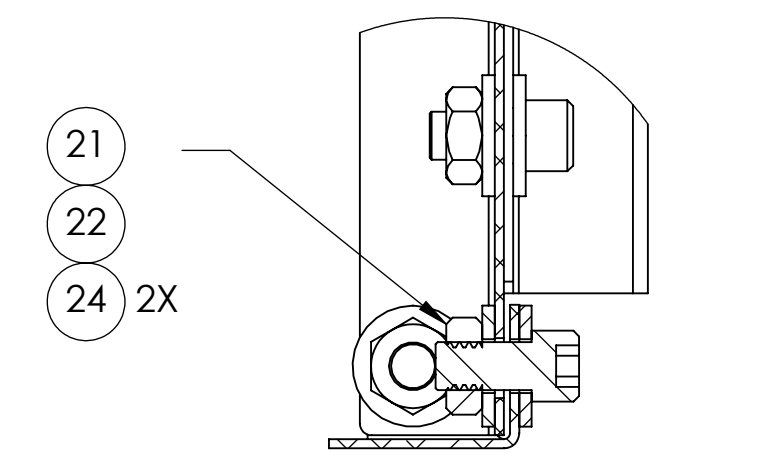
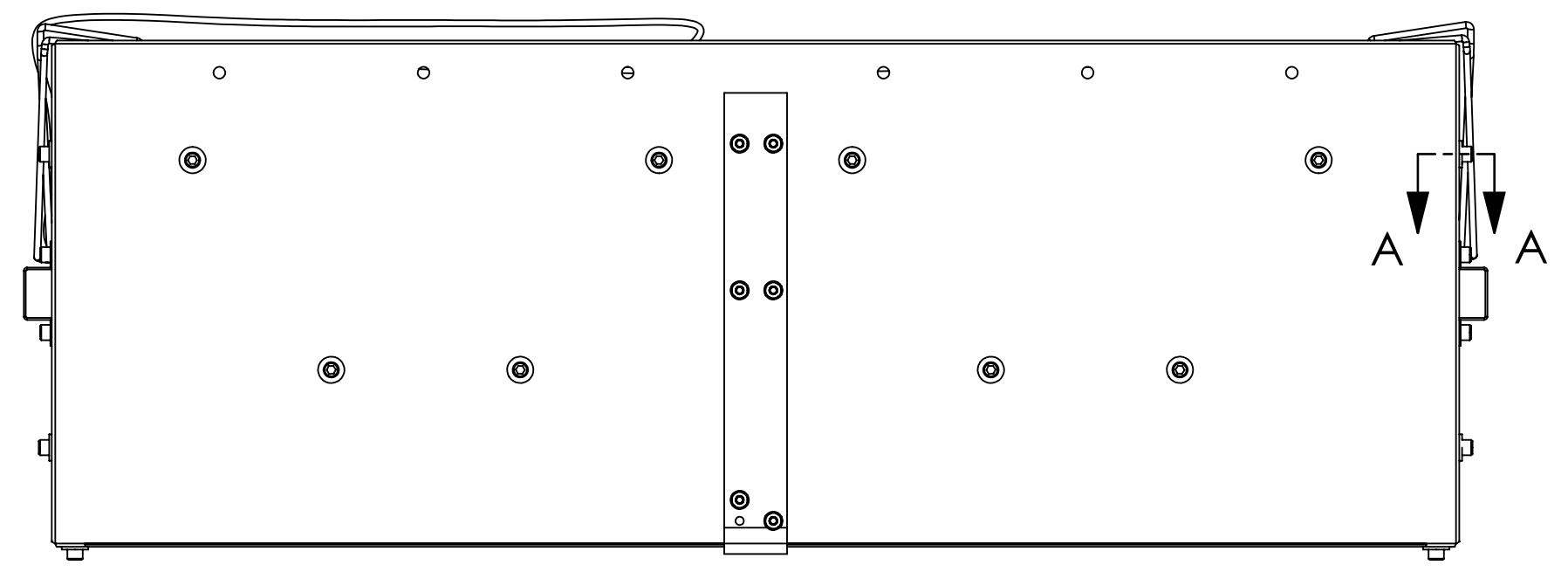
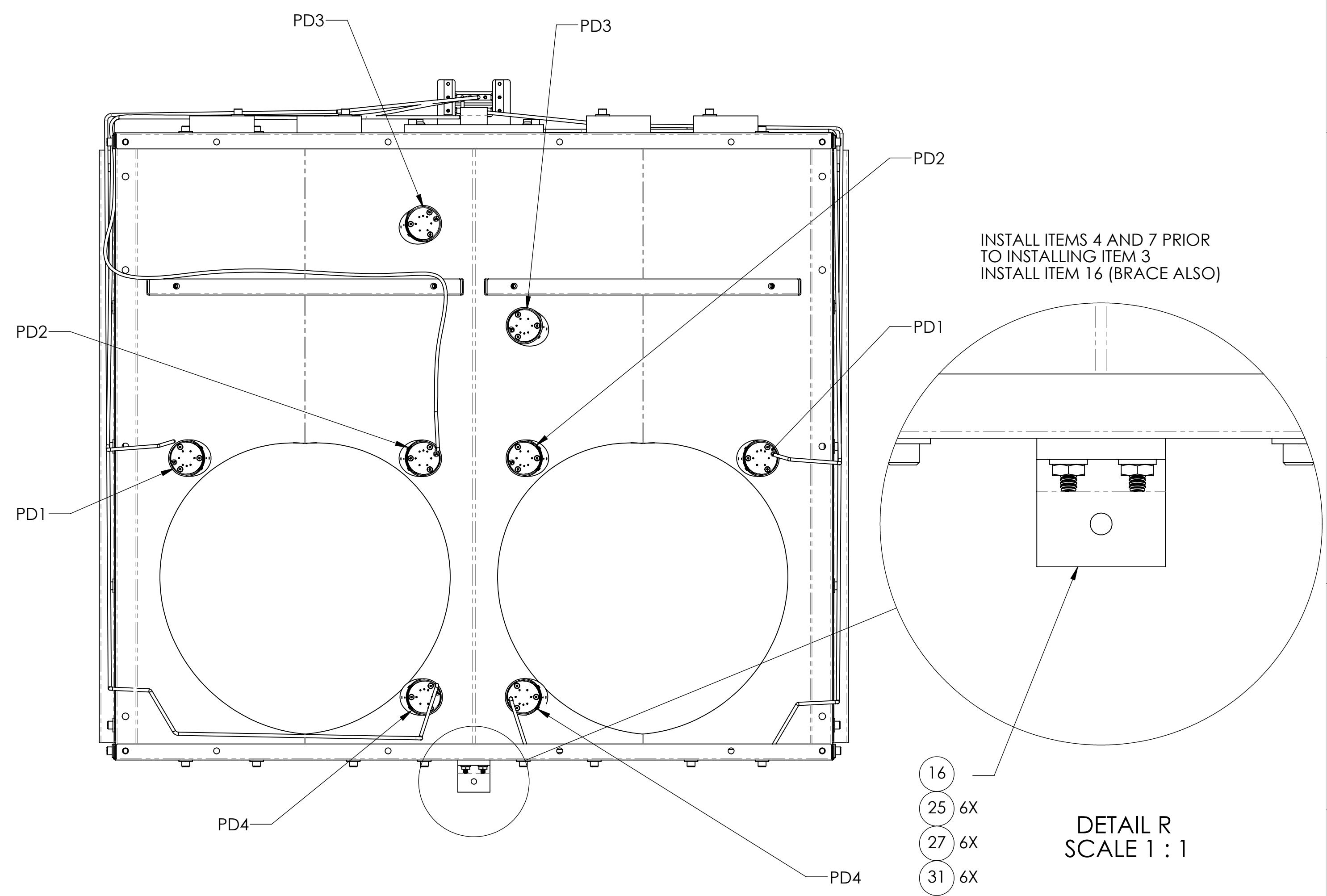
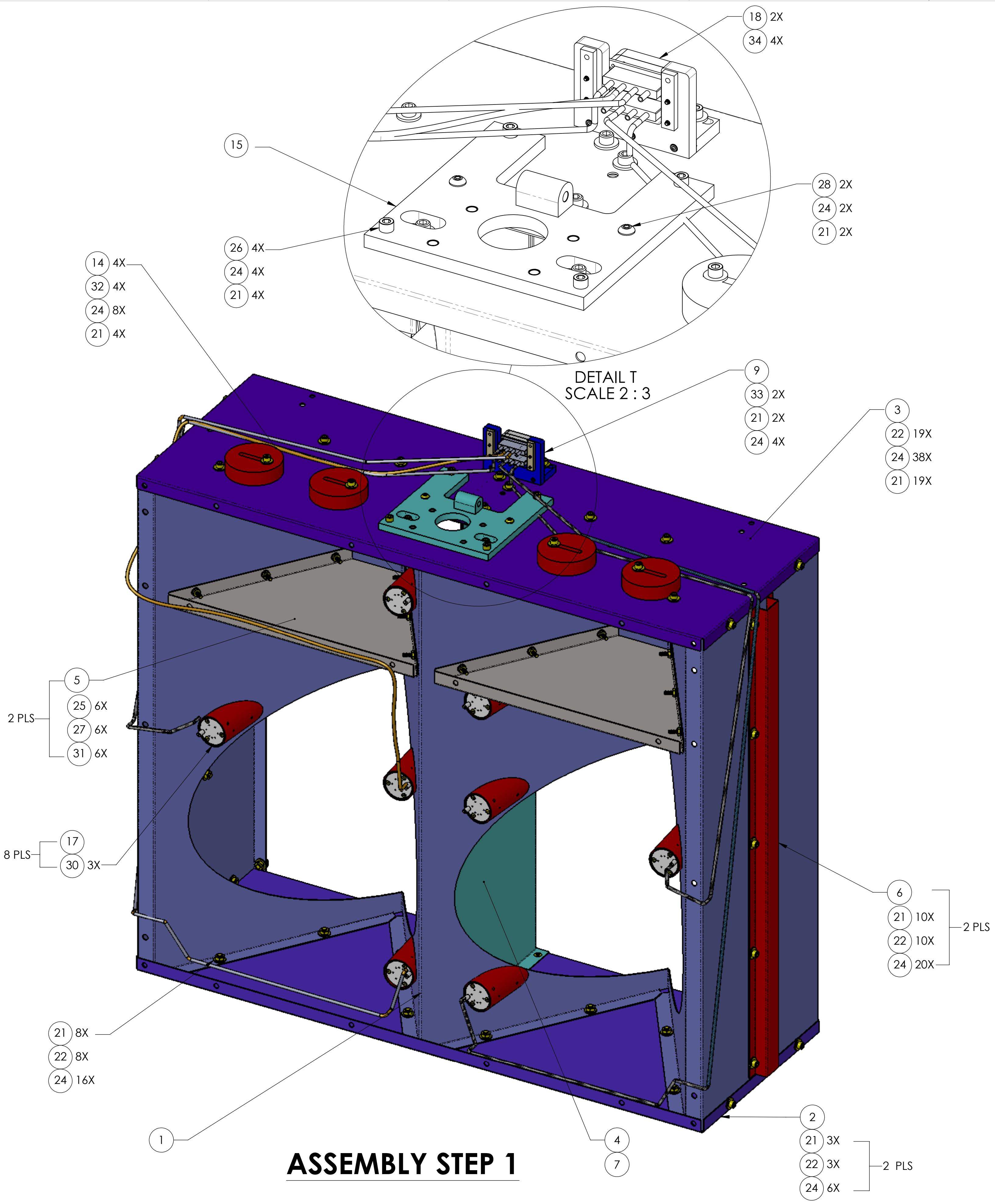
DESIGNER N.Nguyen 01 Jun 2010 SIZE DWG. NO. D1000977 REV. v5
 DRAFTER N.Nguyen 01 Jul 2010
 CHECKER M. Smith 10 NOV 2010
 APPROVAL D. Coyne 20 NOV 2010 SCALE: 1:3 PROJECTION: SHEET 1 OF 5

D1000977_AudiLIGO_AOS_SLC_ARM_Cavity_Baffle_Box Assy, PART PDM REV: X-245, DRAWING PDM REV: X-358

8 7 6 5 4 3 2 1

H
G
F
E
D
C
B
A

H
G
F
E
D
C
B
A



LIGO CALIFORNIA INSTITUTE OF TECHNOLOGY
MASSACHUSETTS INSTITUTE OF TECHNOLOGY

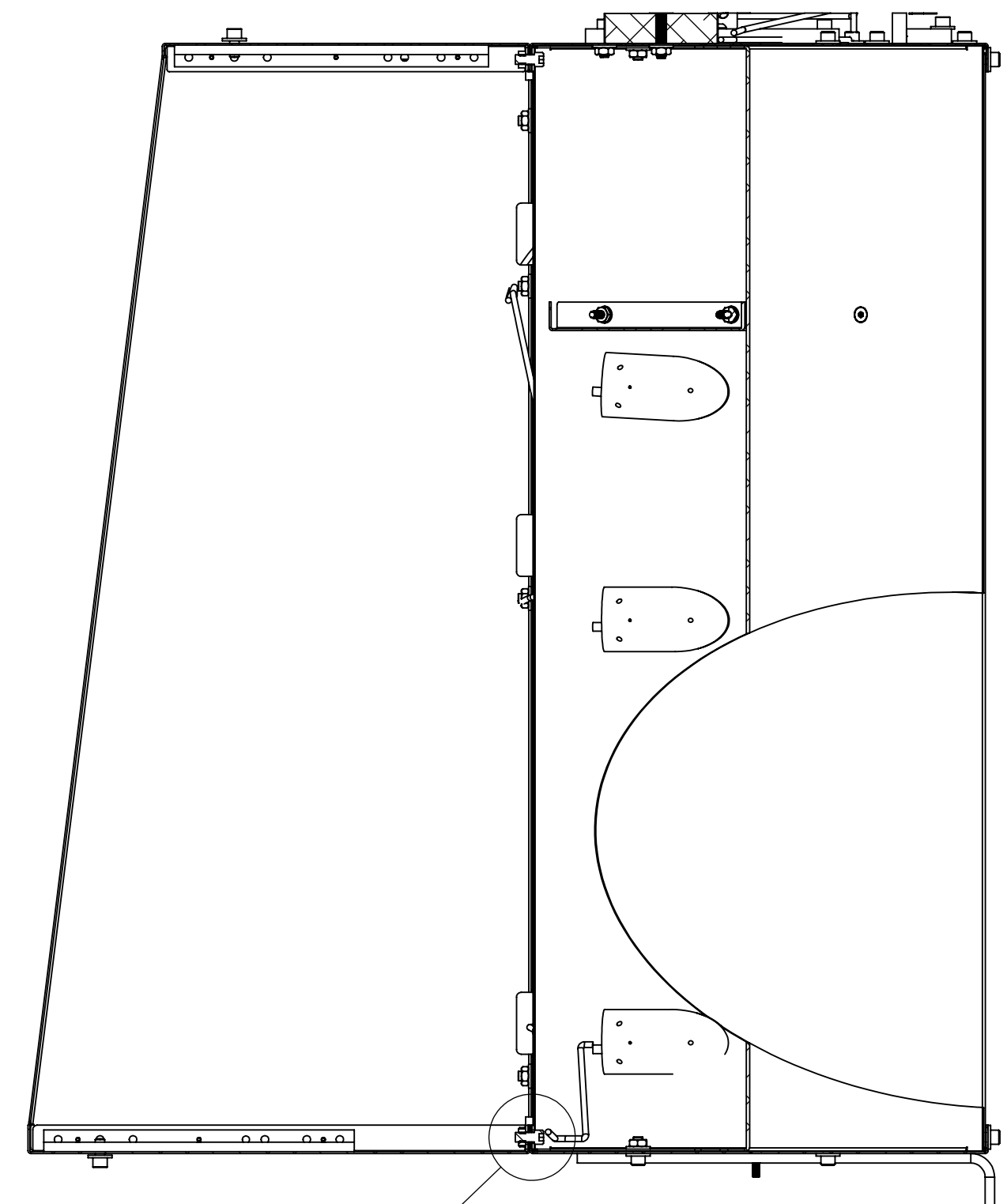
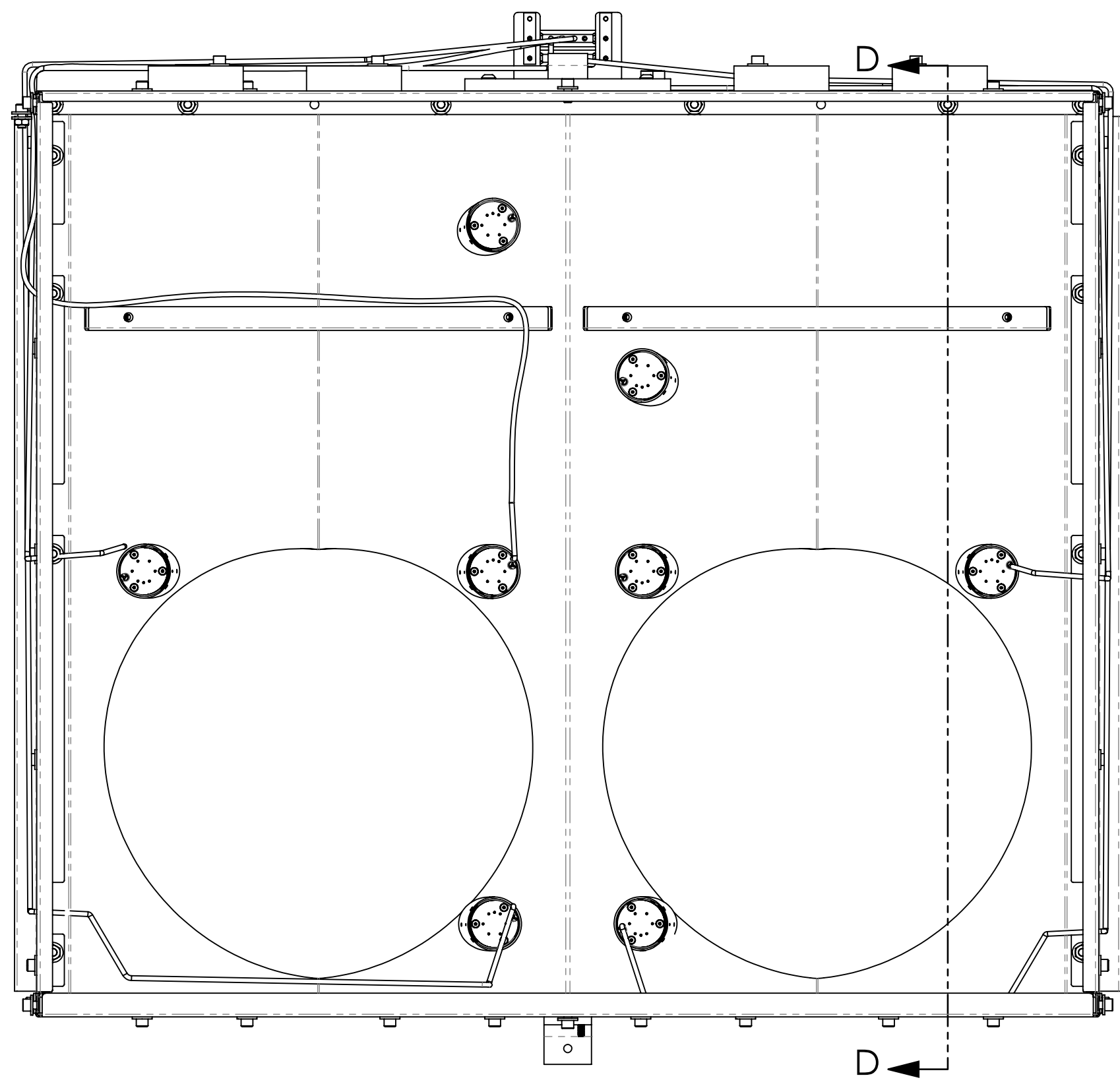
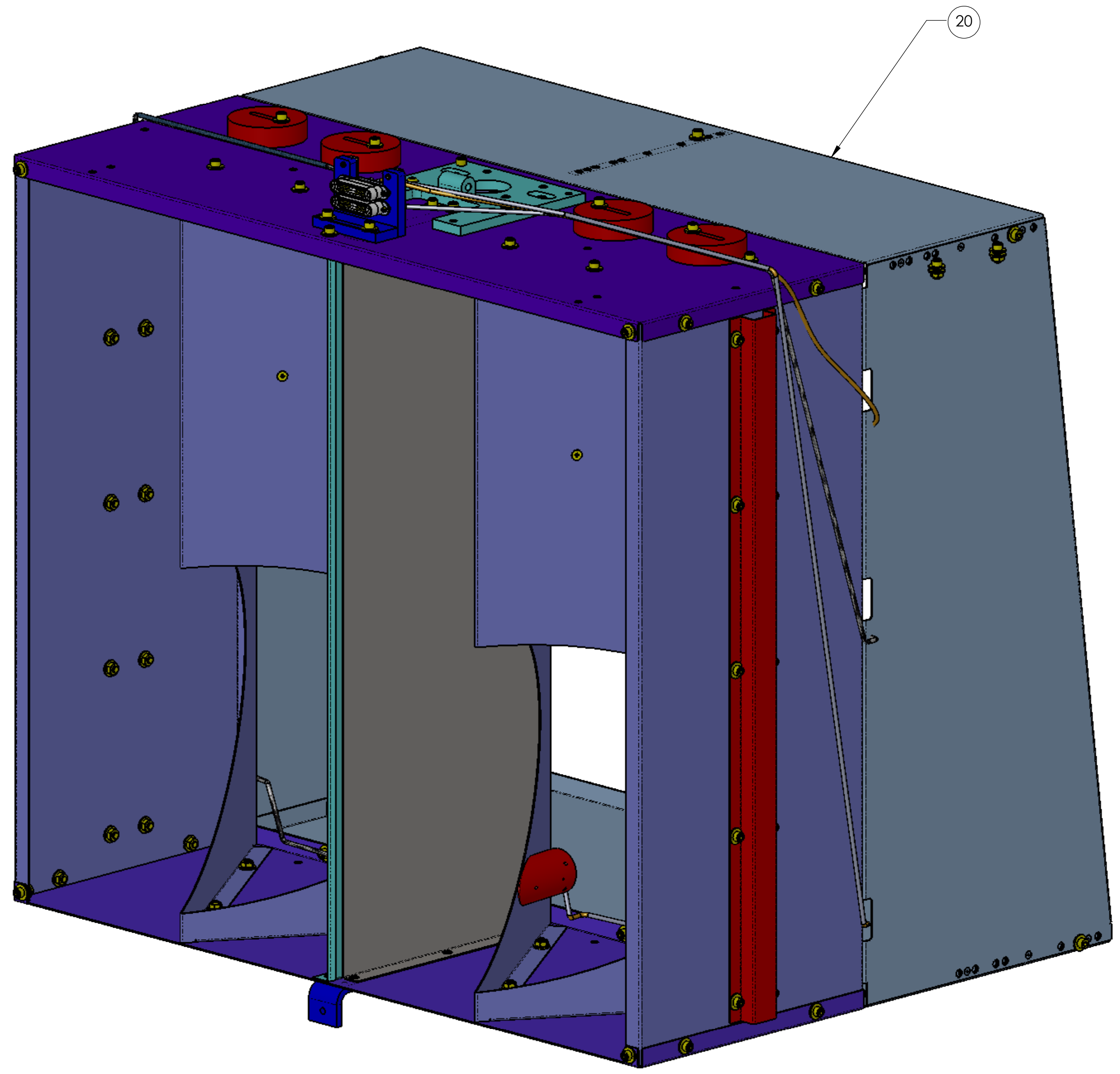
SIZE DWG. NO.	REV.
D D1000977	v5
SCALE: 1:3	PROJECTION:

SHEET 2 OF 5

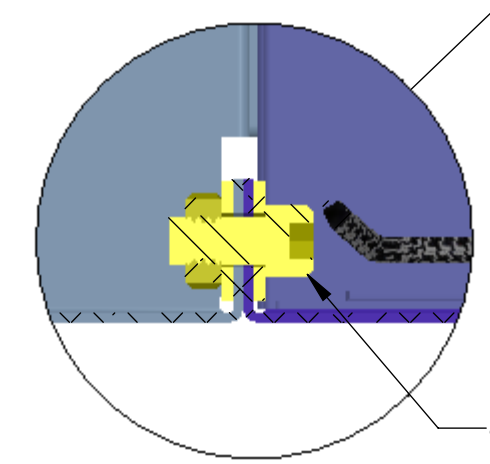
D1000977_AudiLIGO_AQS_SLC_ARM_Cavity_Bottle_Box Assy_PART PDM REV: X-245 DRAWING PDM REV: X-358

8 7 6 5 4 3 2 1

H G F E D C B A



SECTION D-D
SCALE 1 : 4



21
24 2X 20X
22

DETAIL E
SCALE 1 : 1

ASSEMBLY STEP 2

LIGO CALIFORNIA INSTITUTE OF TECHNOLOGY MASSACHUSETTS INSTITUTE OF TECHNOLOGY	
SIZE DWG. NO.	REV.
D D1000977	v5
SCALE: 1:3	PROJECTION:
SHEET 3 OF 5	

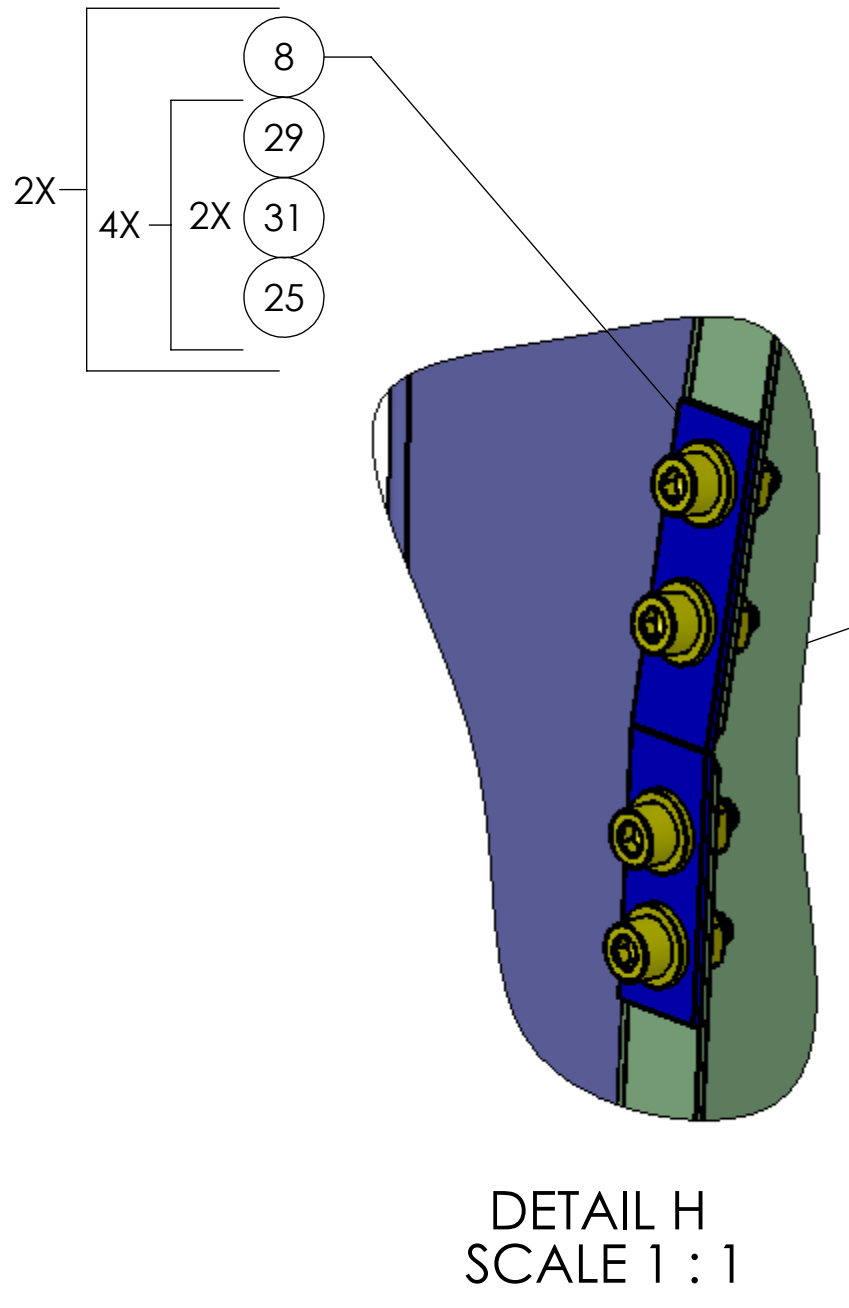
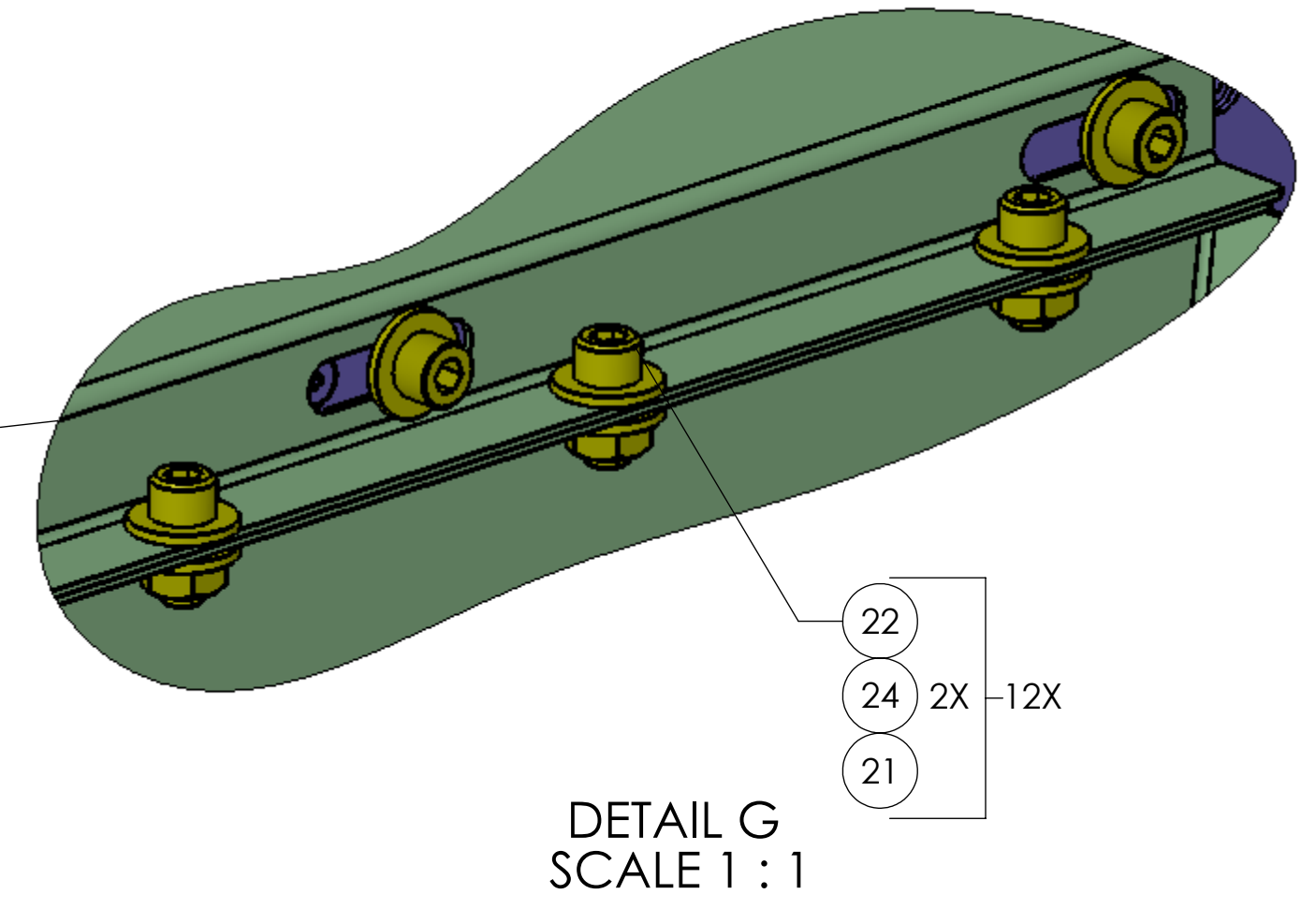
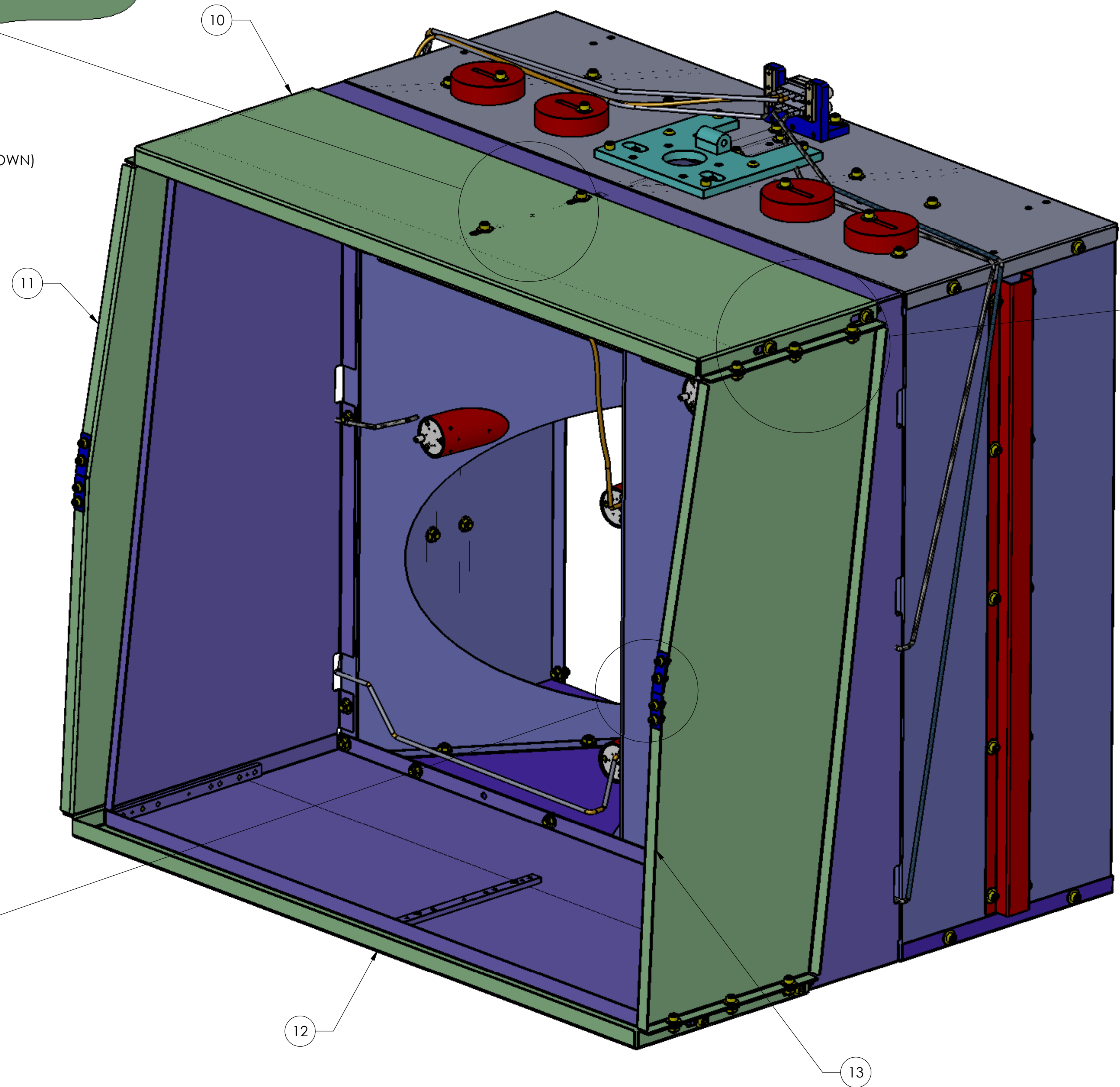
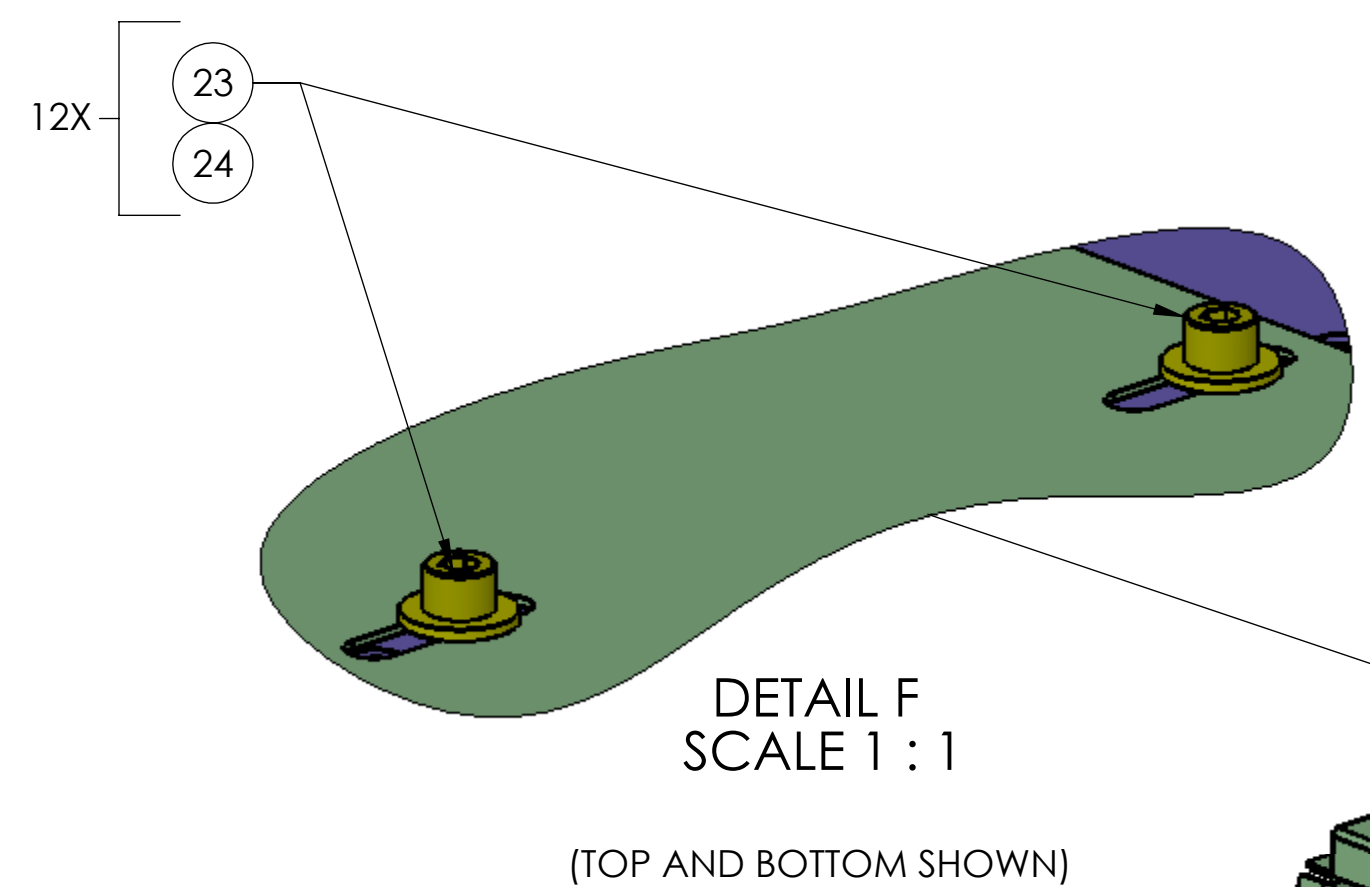
8 7 6 5 4 3 2 1

H G F E D C B A

D1000977_AudiLIGO_ACS_SLC_ARM_Cavity_Bottle_Box_Assy_PART_PDM_REV_X-245_DRAWING_PDM_REV_X-358

8 7 6 5 4 3 2 1

H G F E D C B A

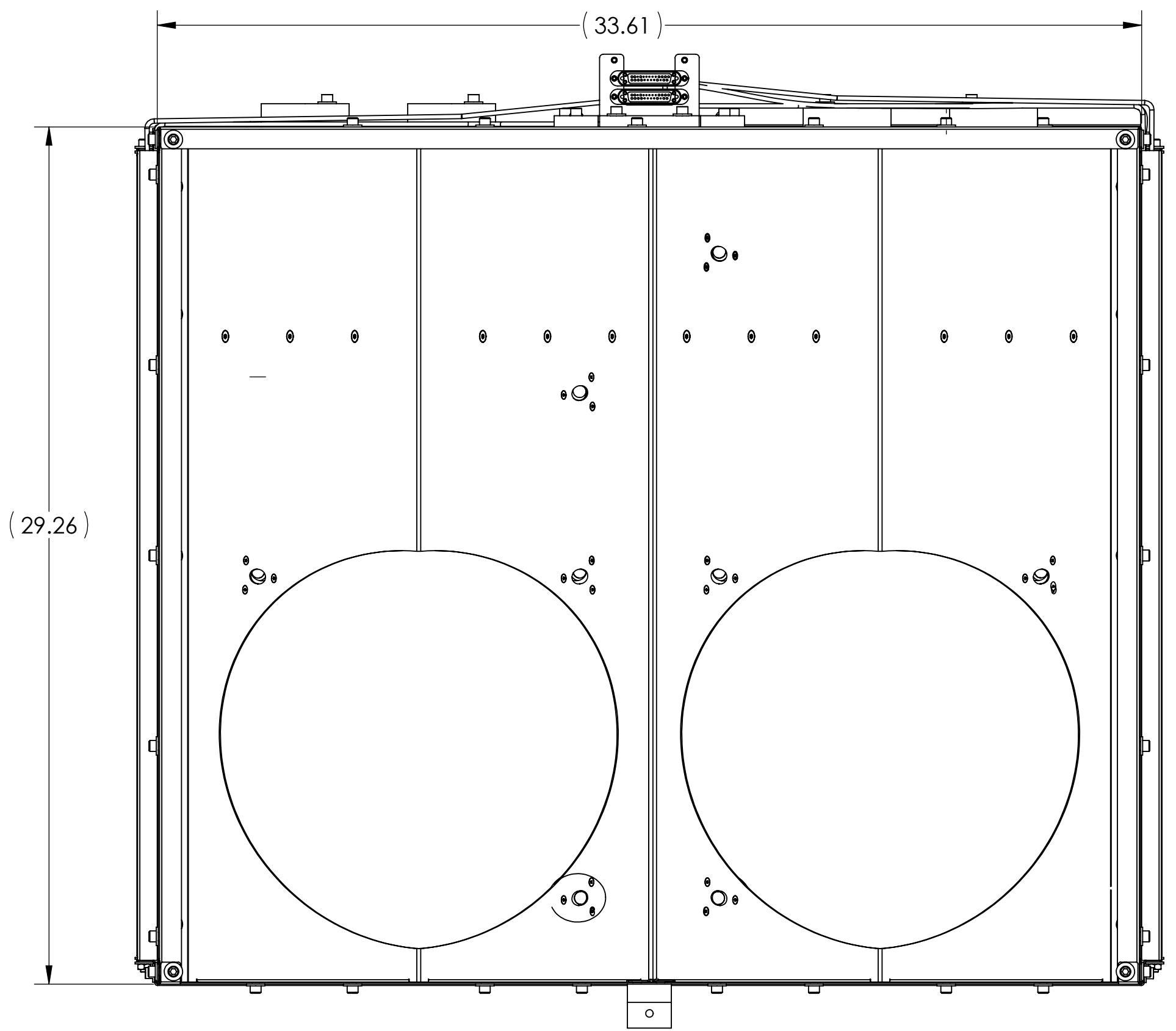
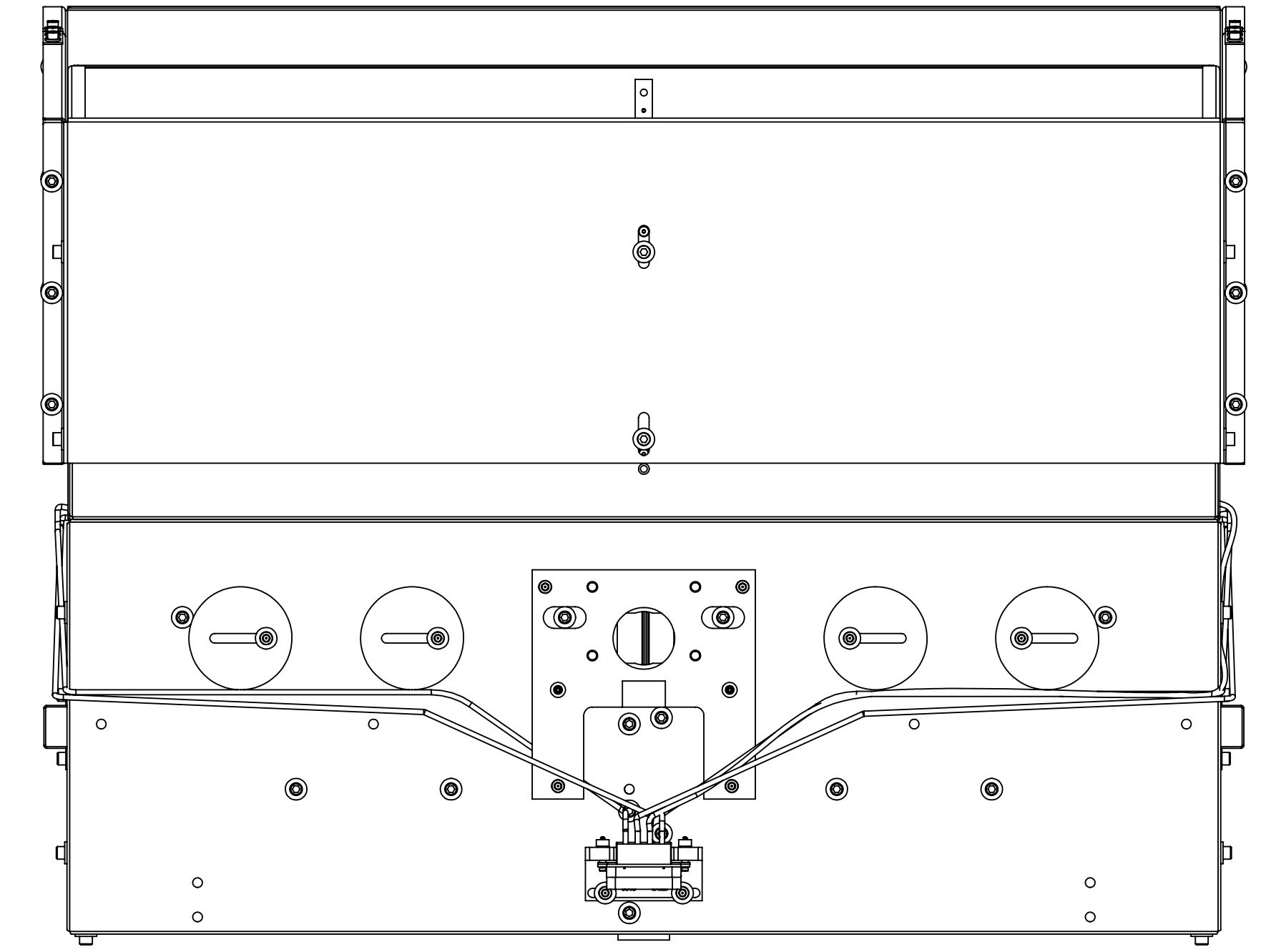


ASSEMBLY STEP 3

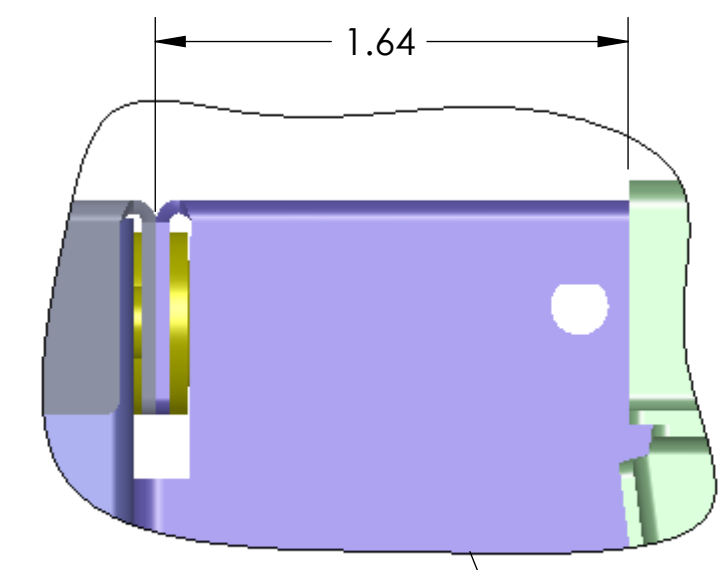
LIGO CALIFORNIA INSTITUTE OF TECHNOLOGY MASSACHUSETTS INSTITUTE OF TECHNOLOGY		REV.
SIZE DWG. NO.	D1000977	v5
SCALE: 1:3	PROJECTION:	SHEET 4 OF 5

D:\000977_AudiGO_ACS_SLC_ARM_Cavity_Bottle_Box_Assy_PART_PDM_REV_X-245_DRAWING_PDM_REV_X-038

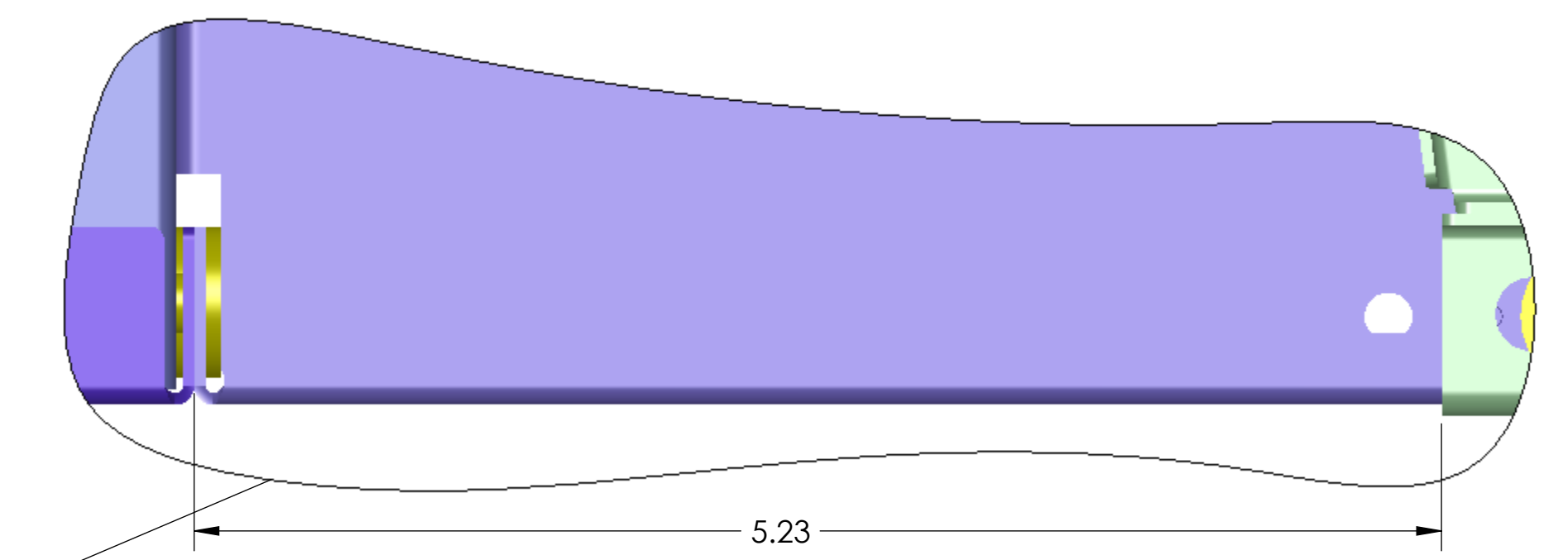
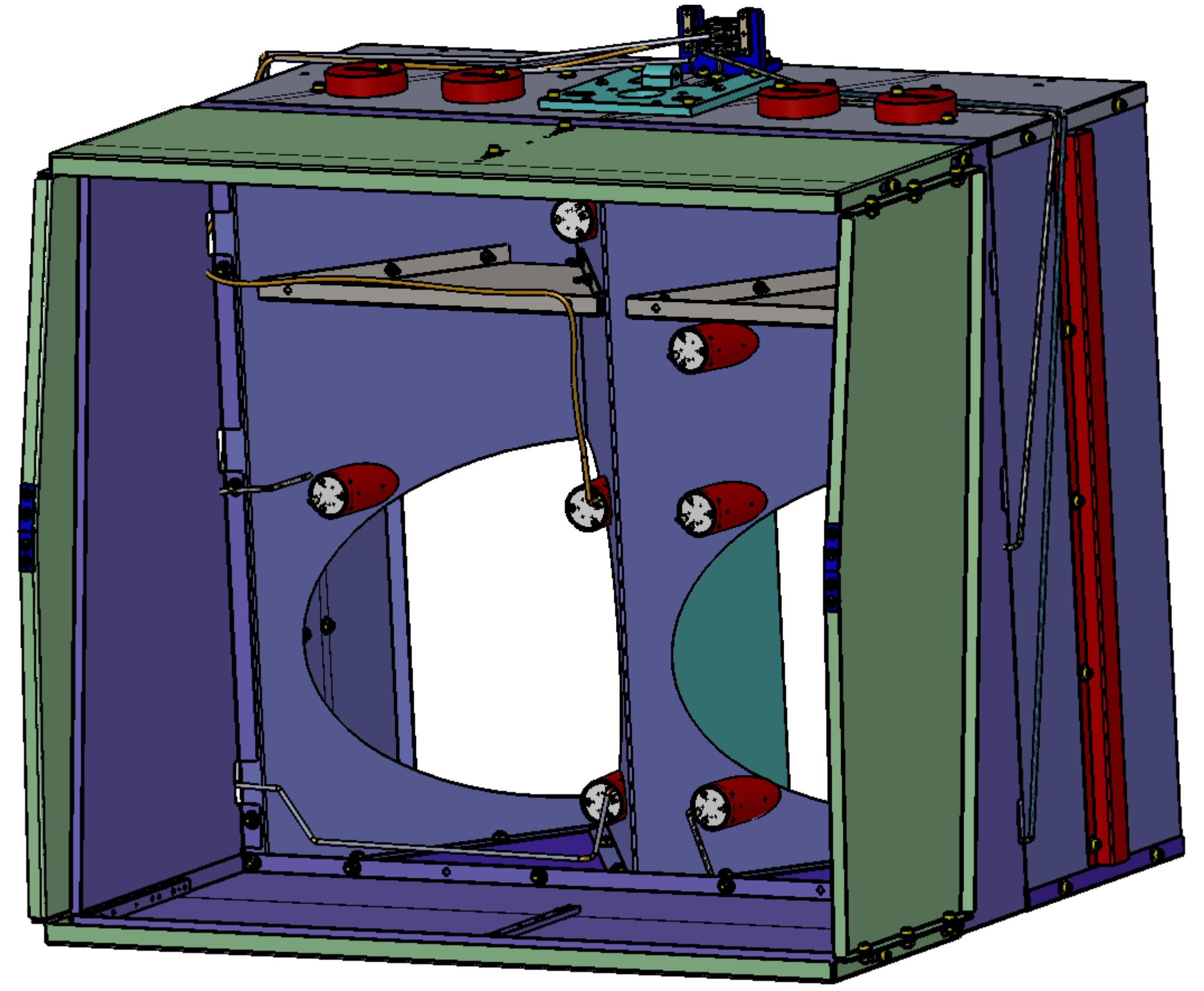
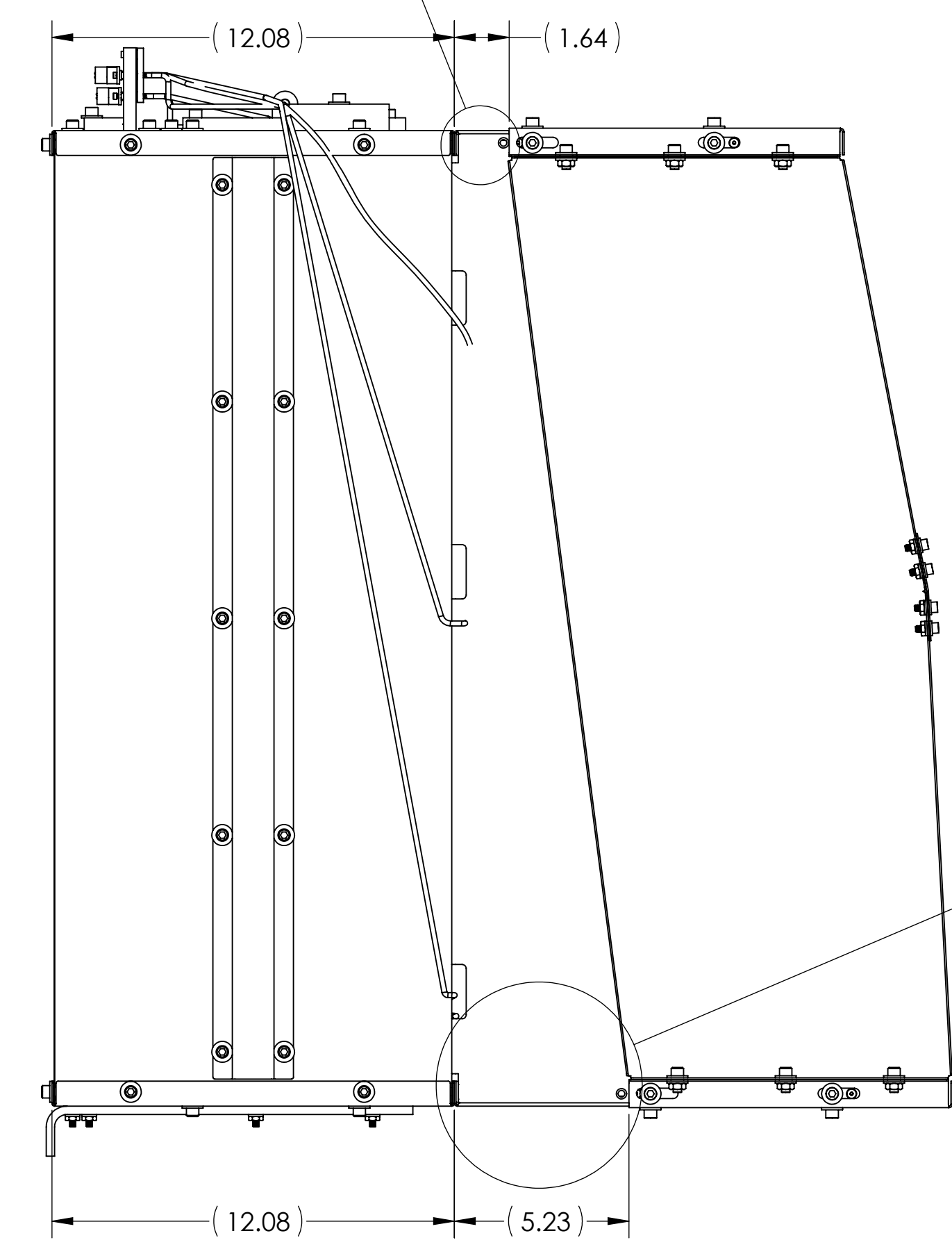
8 7 6 5 4 3 2 1



ASSEMBLY STEP 4



DETAIL K
SCALE 1.5 : 1



DETAIL J
SCALE 1.5 : 1

D1000977_AduIGO_ACS_SLC_ARM_Cavity_Bottle_Box_Assy_PART_PDM_REV_X-245_DRAWING_PDM_REV_X-358