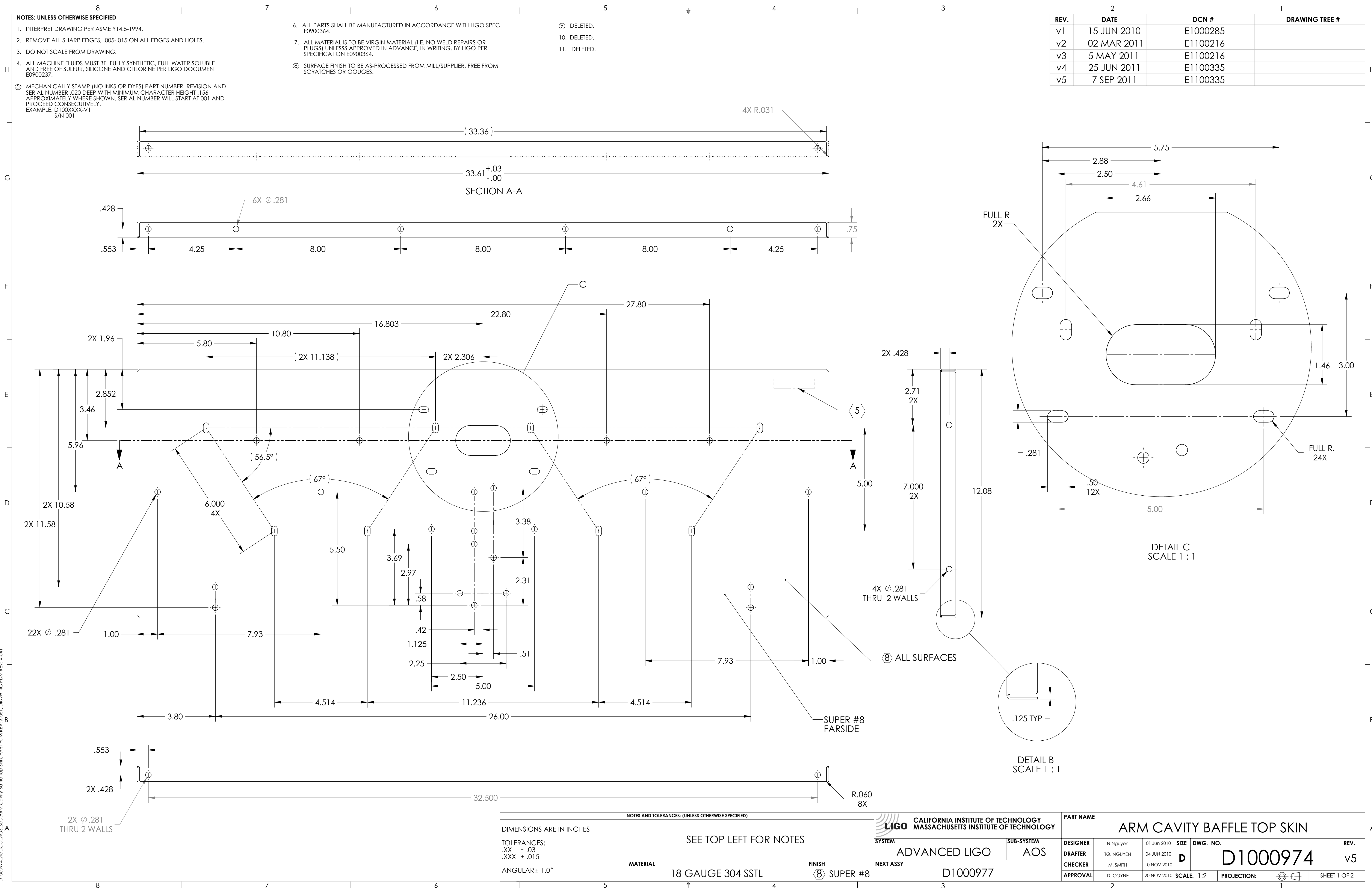


- NOTES: UNLESS OTHERWISE SPECIFIED**
1. INTERPRET DRAWING PER ASME Y14.5-1994.
 2. REMOVE ALL SHARP EDGES, .005-.015 ON ALL EDGES AND HOLES.
 3. DO NOT SCALE FROM DRAWING.
 4. ALL MACHINE FLUIDS MUST BE FULLY SYNTHETIC, FULL WATER SOLUBLE AND FREE OF SULFUR, SILICONE AND CHLORINE PER LIGO DOCUMENT E0900237.
 5. MECHANICALLY STAMP (NO INKS OR DYES) PART NUMBER, REVISION AND SERIAL NUMBER .020 DEEP WITH MINIMUM CHARACTER HEIGHT .156 APPROXIMATELY WHERE SHOWN. SERIAL NUMBER WILL START AT 001 AND PROCEED CONSECUTIVELY. EXAMPLE: D100XXX-V1 S/N 001

6. ALL PARTS SHALL BE MANUFACTURED IN ACCORDANCE WITH LIGO SPEC E0900364.
7. ALL MATERIAL IS TO BE VIRGIN MATERIAL (I.E. NO WELD REPAIRS OR PLUGS) UNLESS APPROVED IN ADVANCE, IN WRITING, BY LIGO PER SPECIFICATION E0900364.
8. SURFACE FINISH TO BE AS-PROCESSED FROM MILL/SUPPLIER, FREE FROM SCRATCHES OR GOUGES.

9. DELETED.
10. DELETED.
11. DELETED.

REV.	DATE	DCN #	DRAWING TREE #
v1	15 JUN 2010	E1000285	
v2	02 MAR 2011	E1100216	
v3	5 MAY 2011	E1100216	
v4	25 JUN 2011	E1100335	
v5	7 SEP 2011	E1100335	

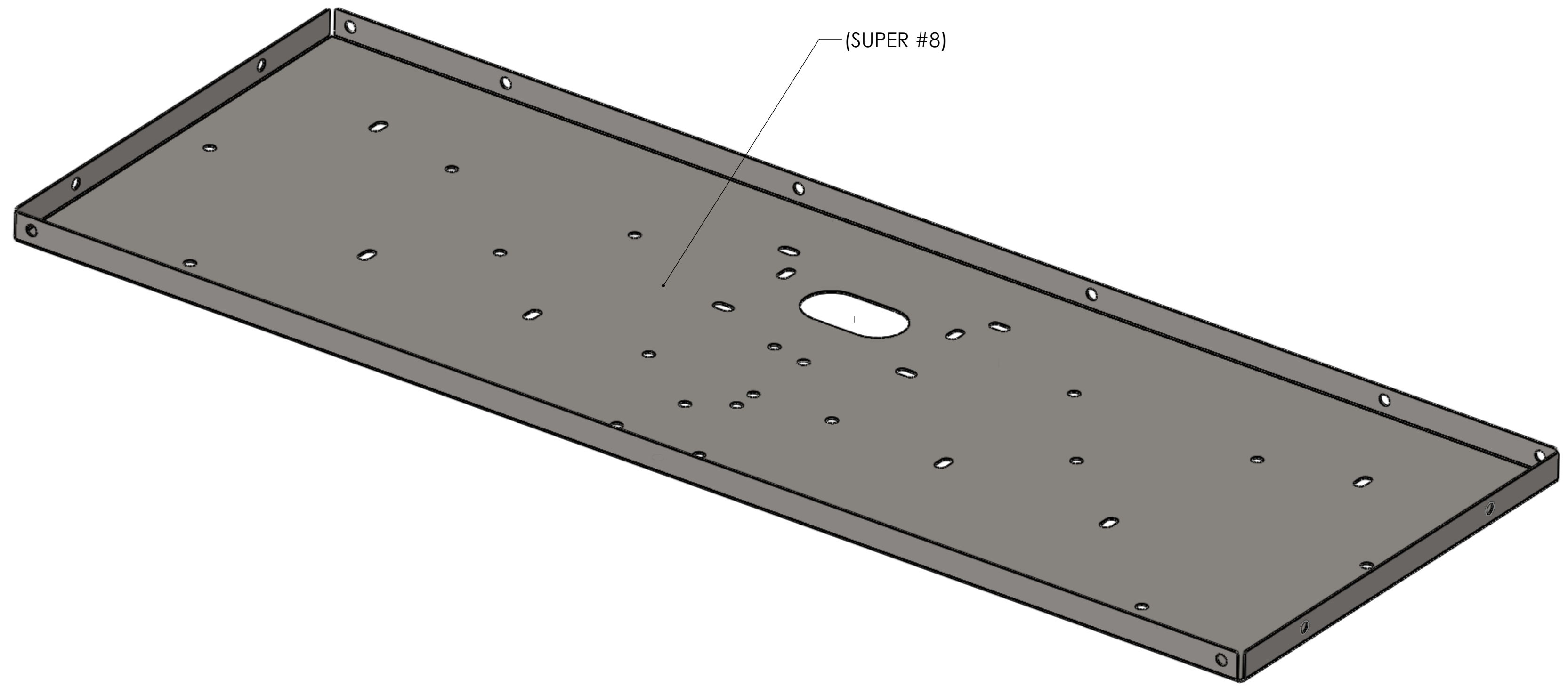
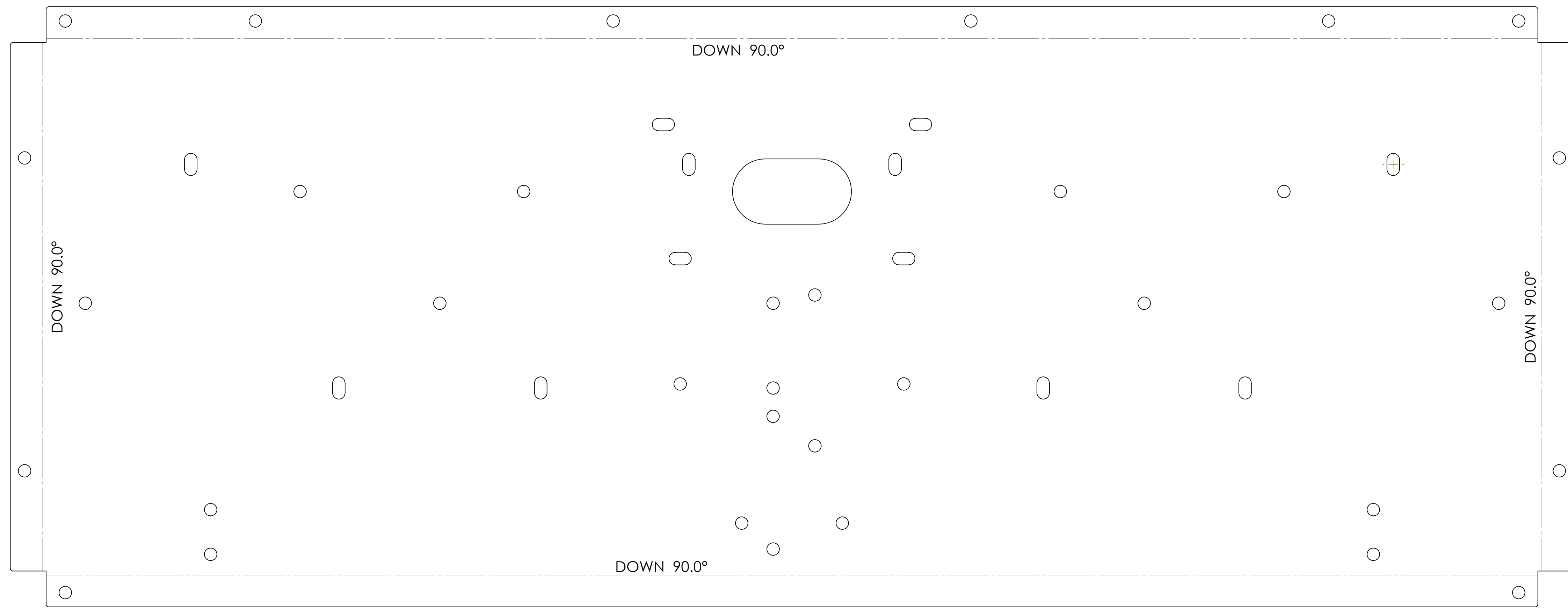



NOTES AND TOLERANCES: (UNLESS OTHERWISE SPECIFIED)	
DIMENSIONS ARE IN INCHES	
TOLERANCES: .XX ± .03 .XXX ± .015	
ANGULAR ± 1.0°	
MATERIAL	FINISH
18 GAUGE 304 SSTL	8 SUPER #8

CALIFORNIA INSTITUTE OF TECHNOLOGY MASSACHUSETTS INSTITUTE OF TECHNOLOGY	
SYSTEM	SUB-SYSTEM
ADVANCED LIGO	AOS
NEXT ASSY	
D1000977	

PART NAME			
ARM CAVITY BAFFLE TOP SKIN			
DESIGNER	N.Nguyen	01 Jun 2010	SIZE DWG. NO.
DRAFTER	TG. NGUYEN	04 JUN 2010	D
CHECKER	M. SMITH	10 NOV 2010	D1000974
APPROVAL	D. COYNE	20 NOV 2010	SCALE: 1:2
PROJECTION:		SHEET 1 OF 2	

D:\000974_Adu\GO_AOS_SLC_ARM_Cavity_Baffle_Top_Skin_PART_PDM_REV_X.061_DRAWING_PDM_REV_X.041



 CALIFORNIA INSTITUTE OF TECHNOLOGY MASSACHUSETTS INSTITUTE OF TECHNOLOGY		REV.
SIZE	DWG. NO.	REV.
D	D1000974	v5
SCALE: 1:2	PROJECTION:	SHEET 2 OF 2

D:\00974_Adu\GO_ACS_SLC_ARM_Covily_Bottle_Top_Skin_PART_PDM_REV_X.061_DRAWING_PDM_REV_X.041