

8

7

6

5

4

3

2

1

NOTES CONTINUED:

⑤ SCRIBE, ENGRAVE, OR MECHANICALLY STAMP (NO INKS OR DYES) DRAWING PART NUMBER, REVISION (AND VARIANT OR "TYPE" IF APPLICABLE) ON NOTED SURFACE OF PART FOLLOWED ON THE NEXT LINE WITH A THREE DIGIT SERIAL NUMBER. SERIAL NUMBERS START AT 001 FOR THE FIRST ARTICLE AND PROCEED CONSECUTIVELY. USE MINIMUM 0.12" HIGH CHARACTERS, UNLESS THE SIZE OF THE PART DICTATES SMALLER CHARACTERS. A VIBRATORY TOOL MAY BE USED.
 EXAMPLE: DXXXXXX-VY, TYPE-XX, S/N XXX

| REV. | DATE | DCN # | DRAWING TREE # |
|------|-------------|----------|----------------|
| v1 | 19 JUN 2010 | E1000191 | - |
| - | - | - | - |
| - | - | - | - |

D

D

C

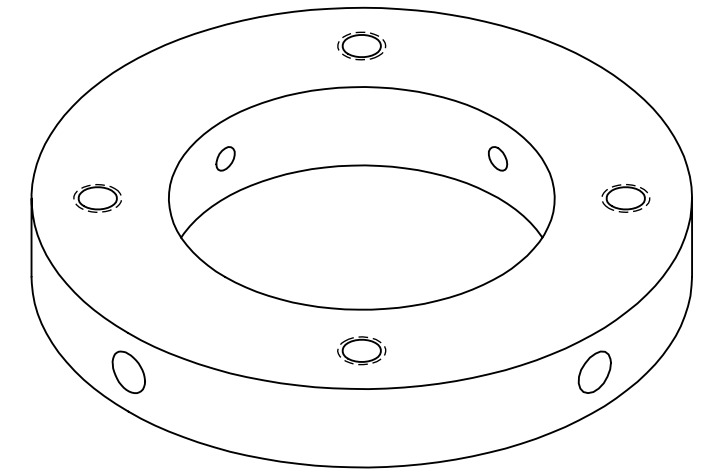
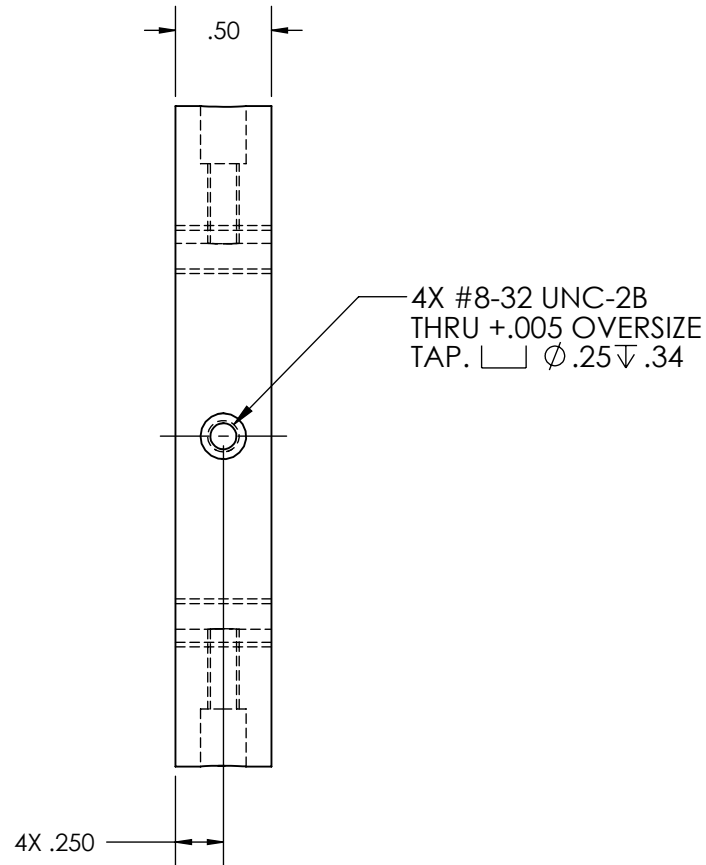
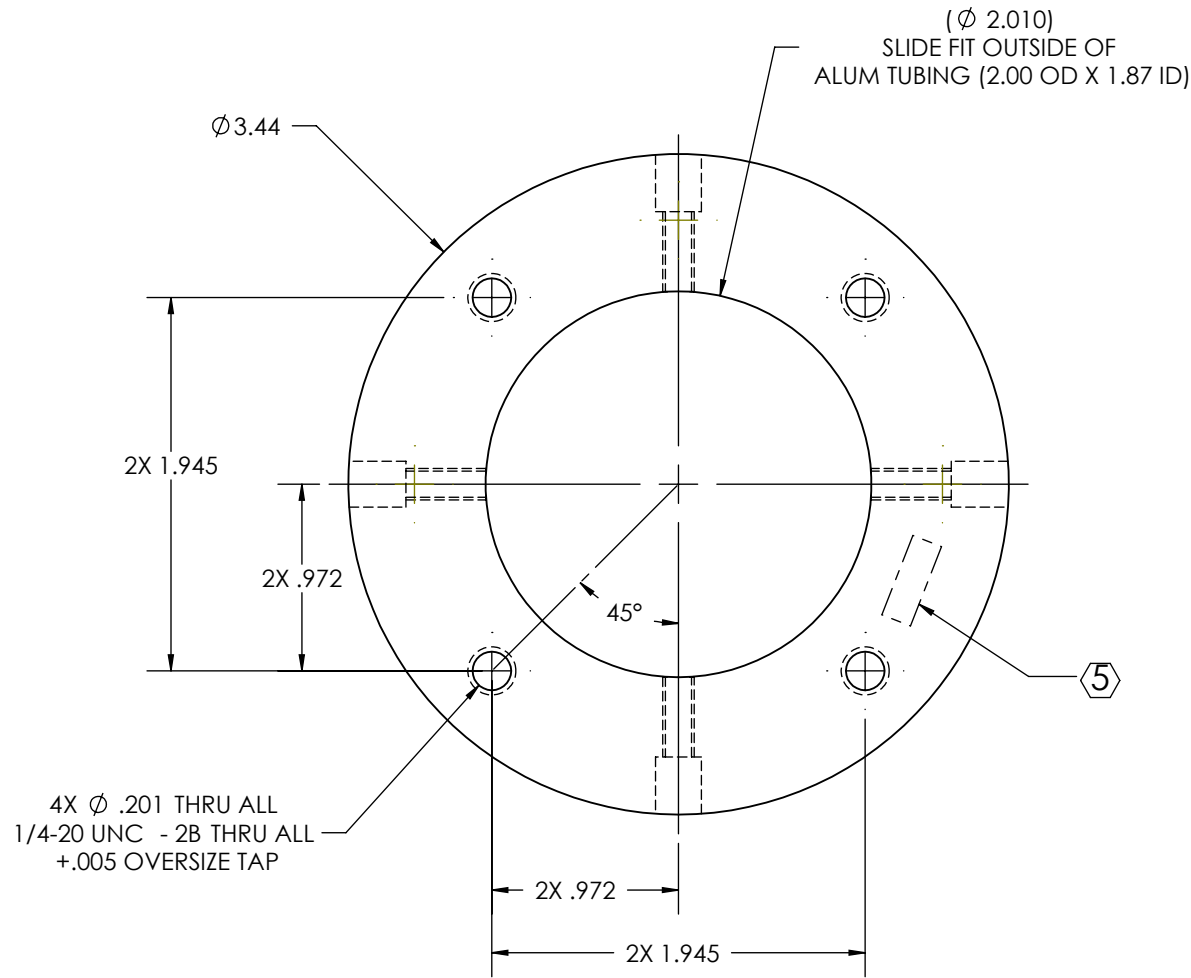
C

B

B

A

A



D1000905_AdLIGO_AOS_SLC Baffle Tube Up Flange, PART PDM REV: X-005, DRAWING PDM REV: X-022

NOTES AND TOLERANCES: (UNLESS OTHERWISE SPECIFIED)

| | | | |
|--------------------------|--|--|------------|
| DIMENSIONS ARE IN INCHES | | 1. INTERPRET DRAWING PER ASME Y14.5-1994. | |
| TOLERANCES: | | 2. REMOVE ALL SHARP EDGES, R.02 MIN. | |
| .XX ± .01 | | 3. DO NOT SCALE FROM DRAWING. | |
| .XXX ± .005 | | 4. ALL MACHINING FLUIDS MUST BE FULLY SYNTHETIC, FULLY WATER SOLUBLE AND FREE OF SULFUR, SILICONE, AND CHLORINE. | |
| ANGULAR ± 1.0° | | MATERIAL | 6061-T6 Al |
| | | FINISH | 32 μinch |

LIGO CALIFORNIA INSTITUTE OF TECHNOLOGY
 MASSACHUSETTS INSTITUTE OF TECHNOLOGY

SYSTEM: **ADVANCED LIGO** SUB-SYSTEM: **AOS**

NEXT ASSY: **D1000900**

| | | | | | |
|-----------|------------|-------------|--------------|---------------------------|-------------|
| PART NAME | | | | SLC BAFFLE TUBE UP FLANGE | |
| DESIGNER | N.Nguyen | 01 Jul 2010 | SIZE | DWG. NO. | |
| DRAFTER | TQ. NGUYEN | 19 JUL 2010 | B | D1000905 | |
| CHECKER | M. SMITH | 19 JUL 2010 | SCALE: | 1:1 | PROJECTION: |
| APPROVAL | D. COYNE | 10 SEP 2010 | SHEET 1 OF 1 | | REV. v1 |

8

7

6

5

4

3

2

1