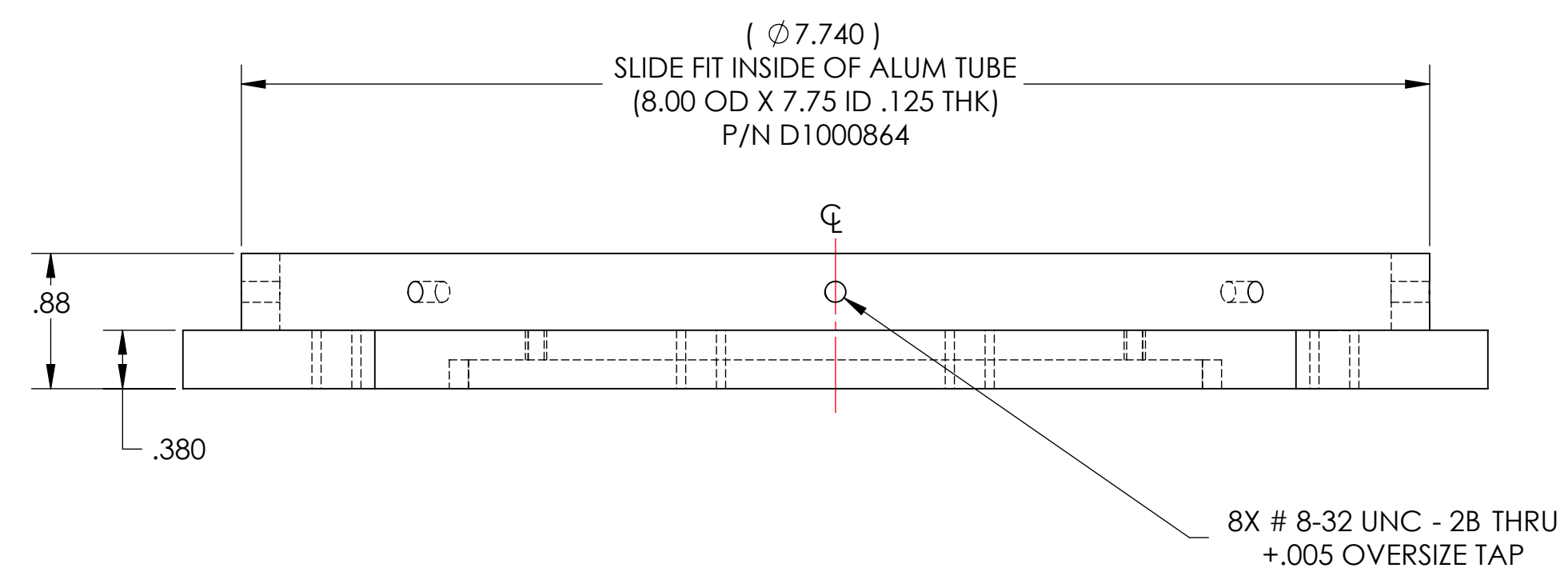
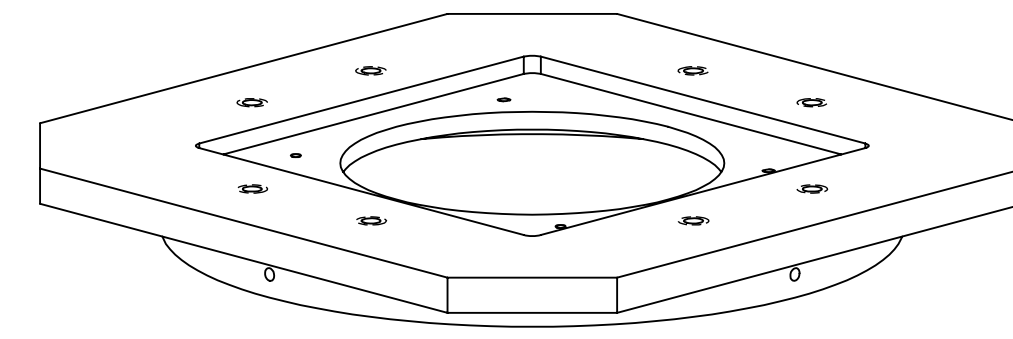


NOTES CONTINUED:
 ⑤ SCRIBE, ENGRAVE, OR MECHANICALLY STAMP (NO INKS OR DYES) DRAWING PART NUMBER, REVISION (AND VARIANT OR TYPE IF APPLICABLE) ON NOTED SURFACE OF PART FOLLOWED ON THE NEXT LINE WITH A THREE DIGIT SERIAL NUMBER. SERIAL NUMBERS START AT 001 FOR THE FIRST ARTICLE AND PROCEED CONSECUTIVELY. USE MINIMUM 0.12" HIGH CHARACTERS, UNLESS THE SIZE OF THE PART DICTATES SMALLER CHARACTERS. A VIBRATORY TOOL MAY BE USED. EXAMPLE: DXXXXXX-VY, TYPE-XX, S/N XXX

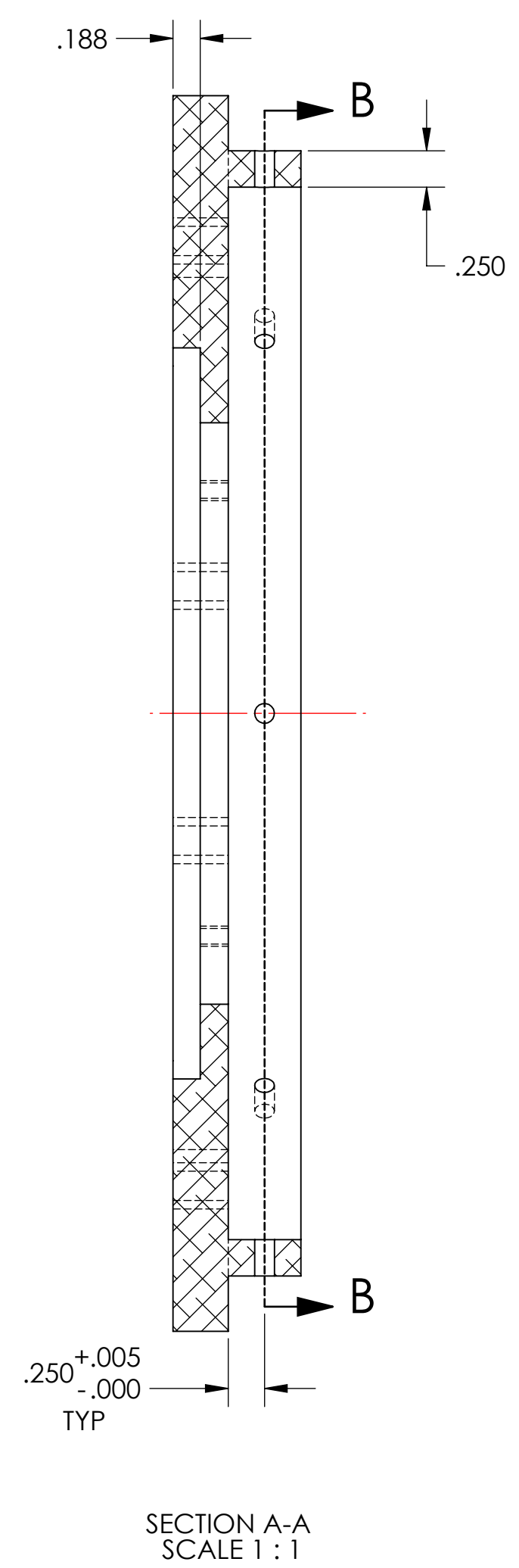
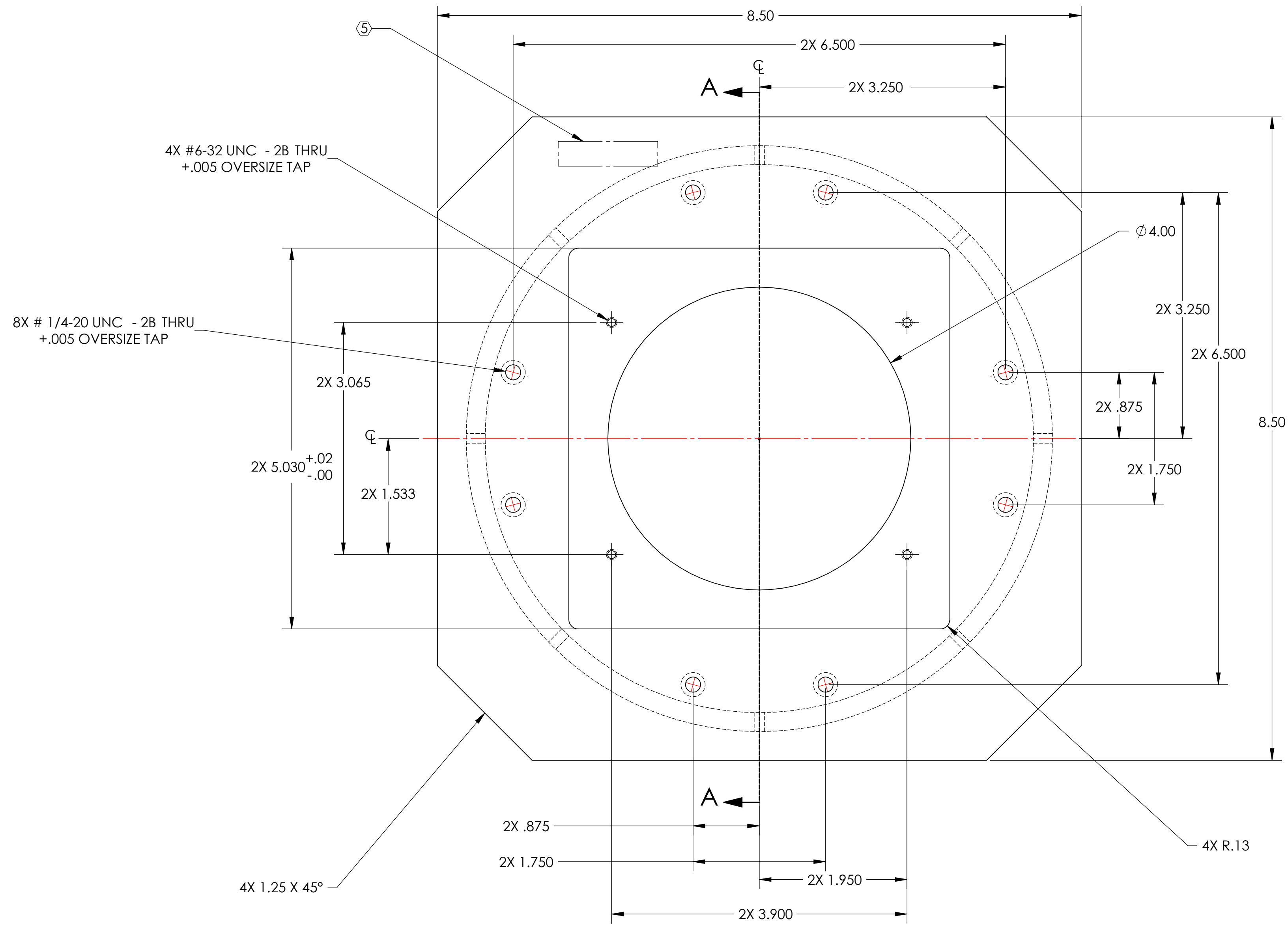
REV.	DATE	DCN #	DRAWING TREE #
v1	03 JUN 2010	E1000191	



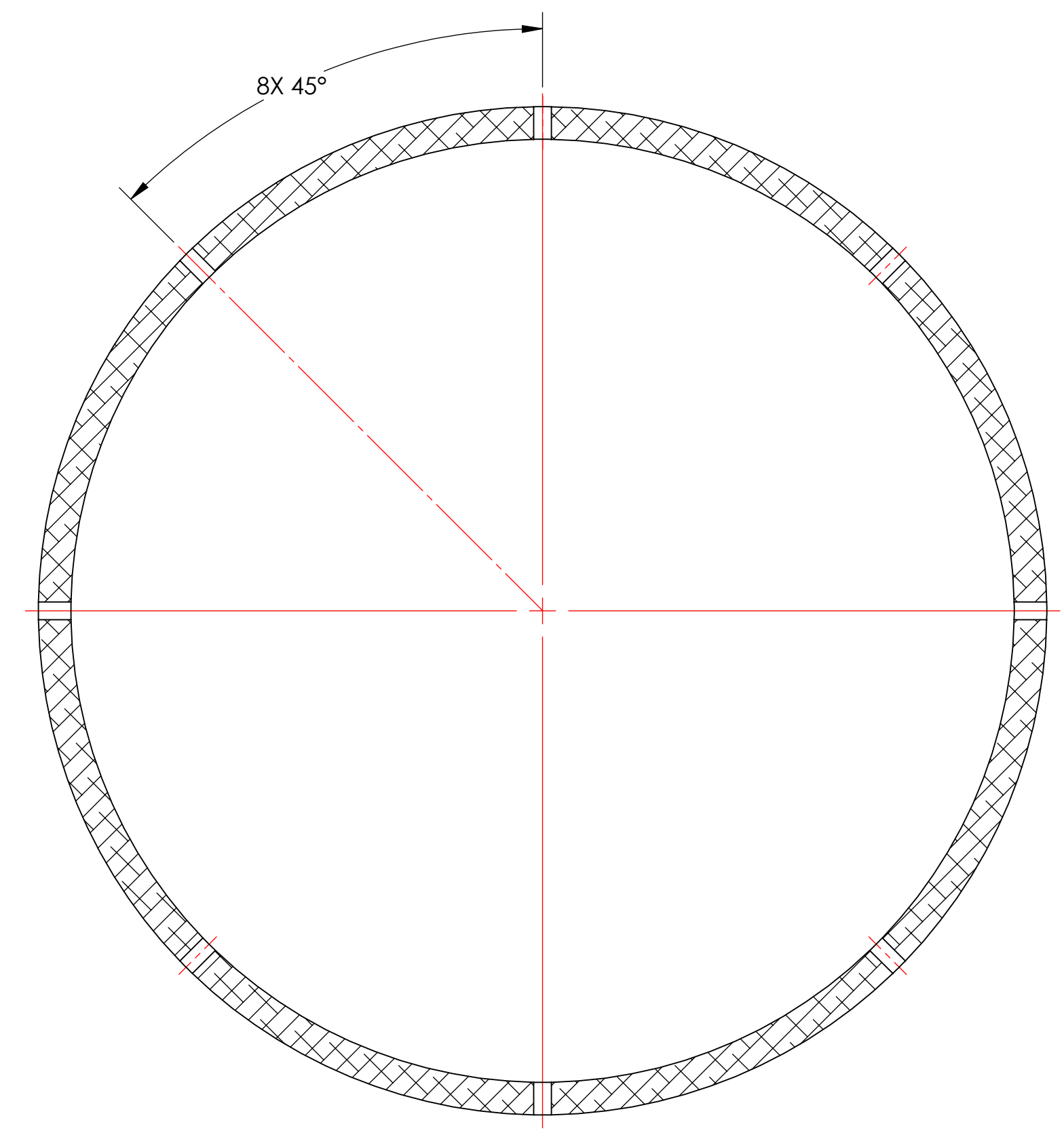
8X # 8-32 UNC - 2B THRU
 +.005 OVERSIZE TAP



GENERAL VIEW
 NO SCALE
 FOR REFERENCE ONLY



SECTION A-A
 SCALE 1 : 1



SECTION B-B
 SCALE 1 : 1

NOTES AND TOLERANCES: (UNLESS OTHERWISE SPECIFIED)				PART NAME	
DIMENSIONS ARE IN INCHES TOLERANCES: .XX ± .01 .XXX ± .005 ANGULAR ± 1.0°				SLC DAMPING TUBE BTM PLATE	
1. INTERPRET DRAWING PER ASME Y14.5-1994. 2. REMOVE ALL SHARP EDGES, R.02 MIN. 3. DO NOT SCALE FROM DRAWING. 4. ALL MACHINING FLUIDS MUST BE FULLY SYNTHETIC, FULLY WATER SOLUBLE AND FREE OF SULFUR, SILICONE, AND CHLORINE.				DESIGNER: N.Nguyen 01 Jun 2010 DRAFTER: TQ. NGUYEN 15 JUL 2010 CHECKER: M. SMITH 15 JUL 2010 APPROVAL: D. COYNE 10 SEP 2010	
MATERIAL: 6061-T6 Al FINISH: 32 μinch		SYSTEM: ADVANCED LIGO SUB-SYSTEM: AOS		SIZE: D DWG. NO.: D1000868 SCALE: 1:1 PROJECTION:	
MATERIAL: 6061-T6 Al FINISH: 32 μinch NEXT ASSY: D1000865				REV. v1 SHEET 1 OF 1	

D1000868_Adr/GO_ACS_3LC Damping Tube Bottom Plate - PART PDM REV: X-021 - DRAWING PDM REV: X-020