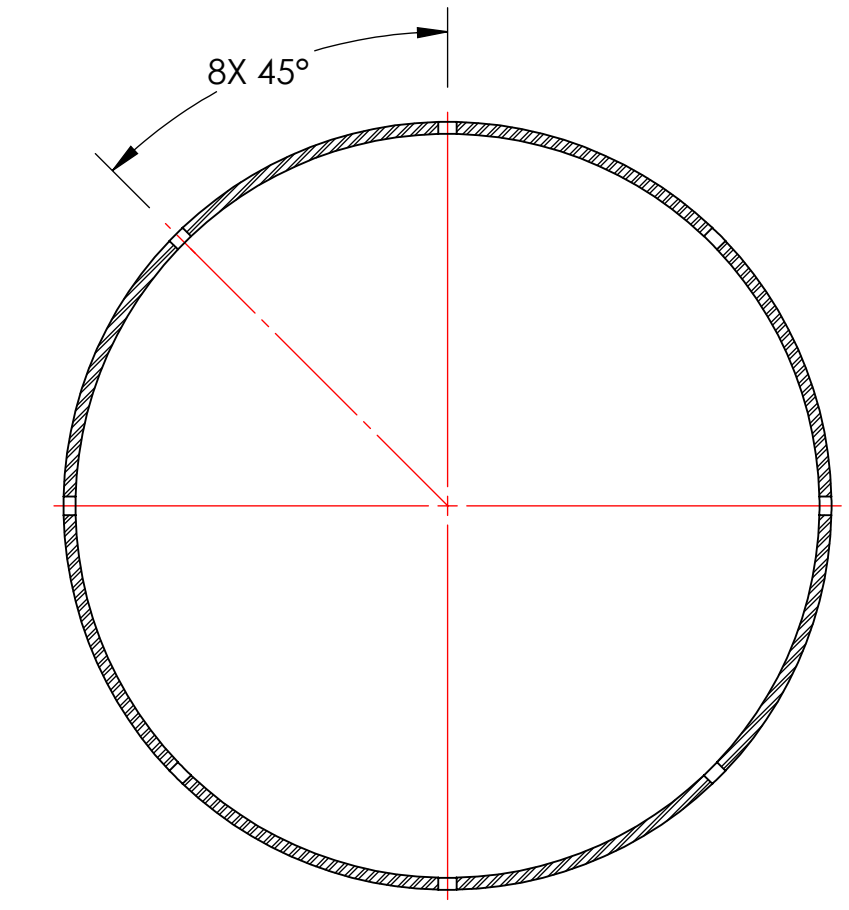
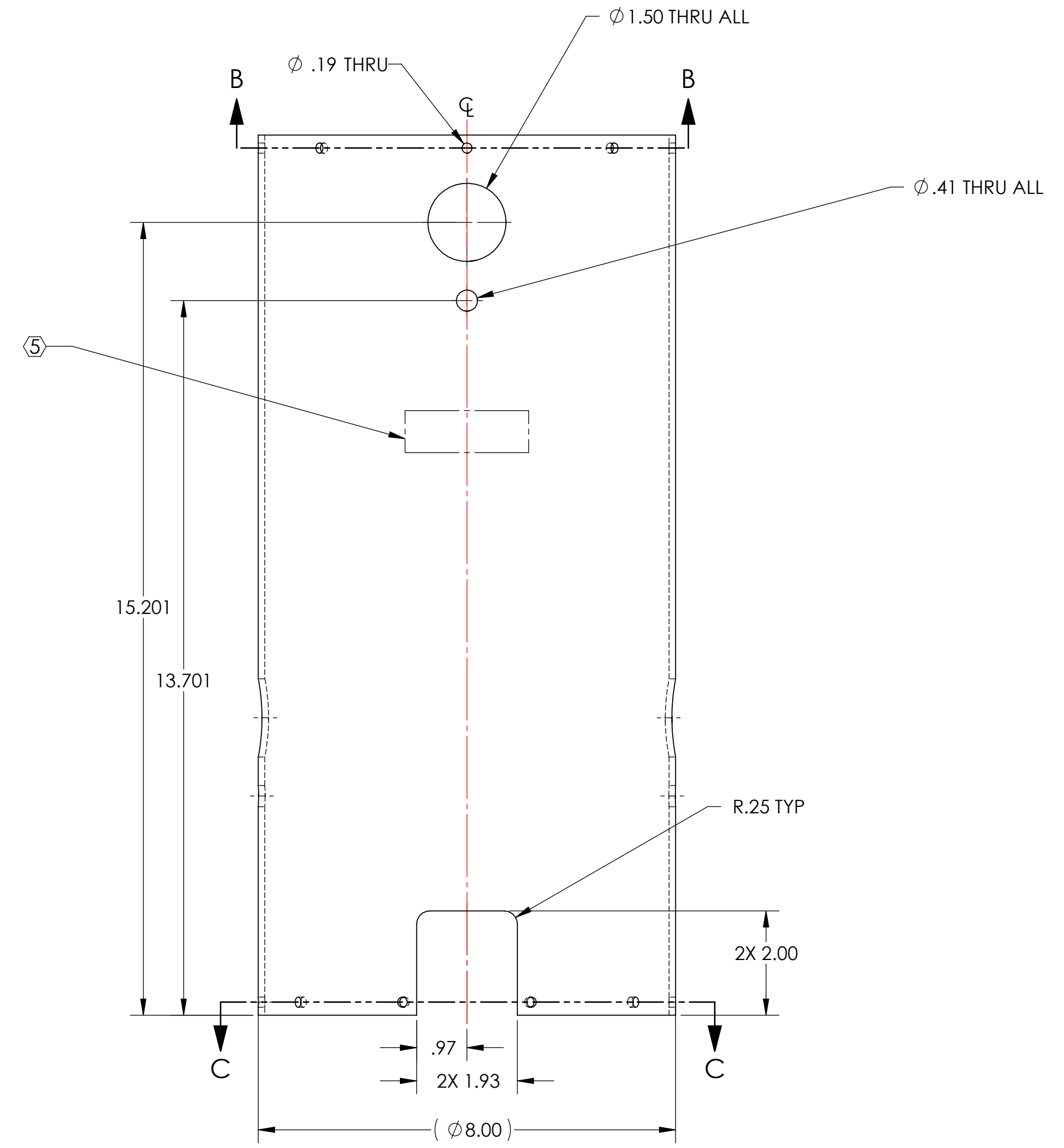


NOTES CONTINUED:
 5. SCRIBE, ENGRAVE, OR MECHANICALLY STAMP (NO INKS OR DYES) DRAWING PART NUMBER, REVISION (AND VARIANT OR "TYPE" IF APPLICABLE) ON NOTED SURFACE OF PART FOLLOWED ON THE NEXT LINE WITH A THREE DIGIT SERIAL NUMBER. SERIAL NUMBERS START AT 001 FOR THE FIRST ARTICLE AND PROCEED CONSECUTIVELY. USE MINIMUM 0.12" HIGH CHARACTERS, UNLESS THE SIZE OF THE PART DICTATES SMALLER CHARACTERS. A VIBRATORY TOOL MAY BE USED. EXAMPLE: DXXXXXX-VY, TYPE-XX, S/N XXX

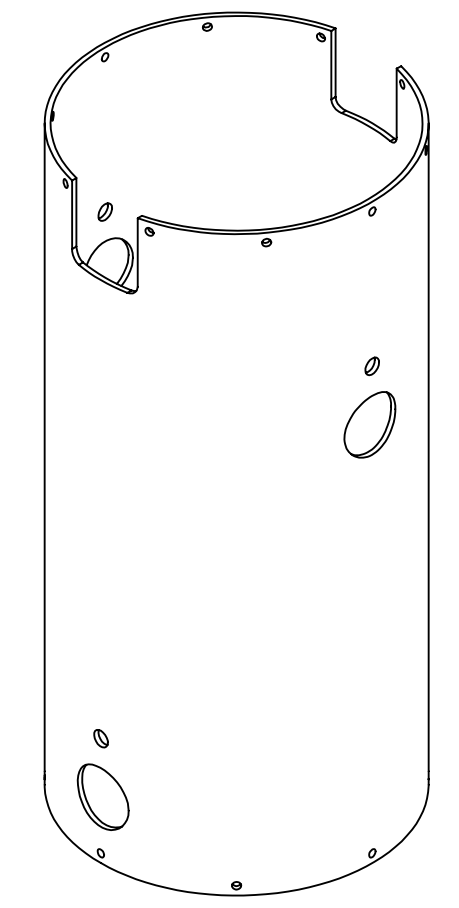
6. SUGGESTING RESOURCE:
 COAST ALUMINUM AND ARCM
 P/N 818B61
 Phone: 800-810 6061
 Fax: 562-946 4188

7. BRIGHT DIP PER E0900364 TO REMOVE ALL SURFACE OXIDES AND POTENTIALLY EMBEDDED CONTAMINANTS.

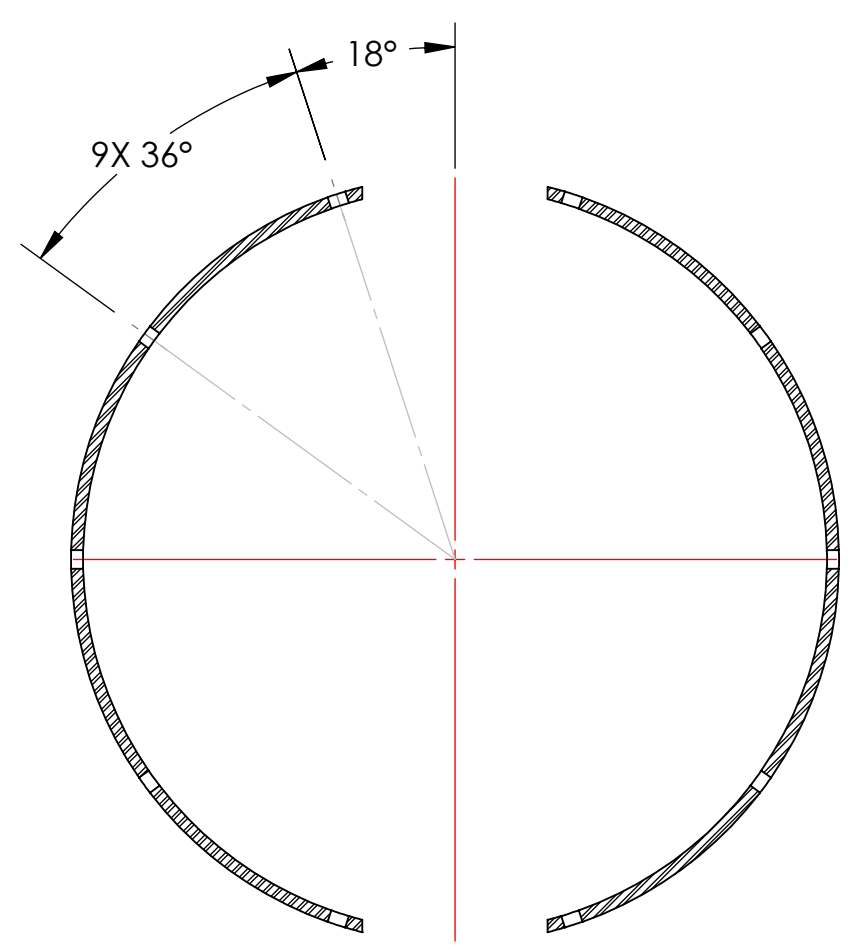
REV.	DATE	DCN #	DRAWING TREE #
v1	03 JUN 2010	E1000191	-
-	-	-	-
-	-	-	-



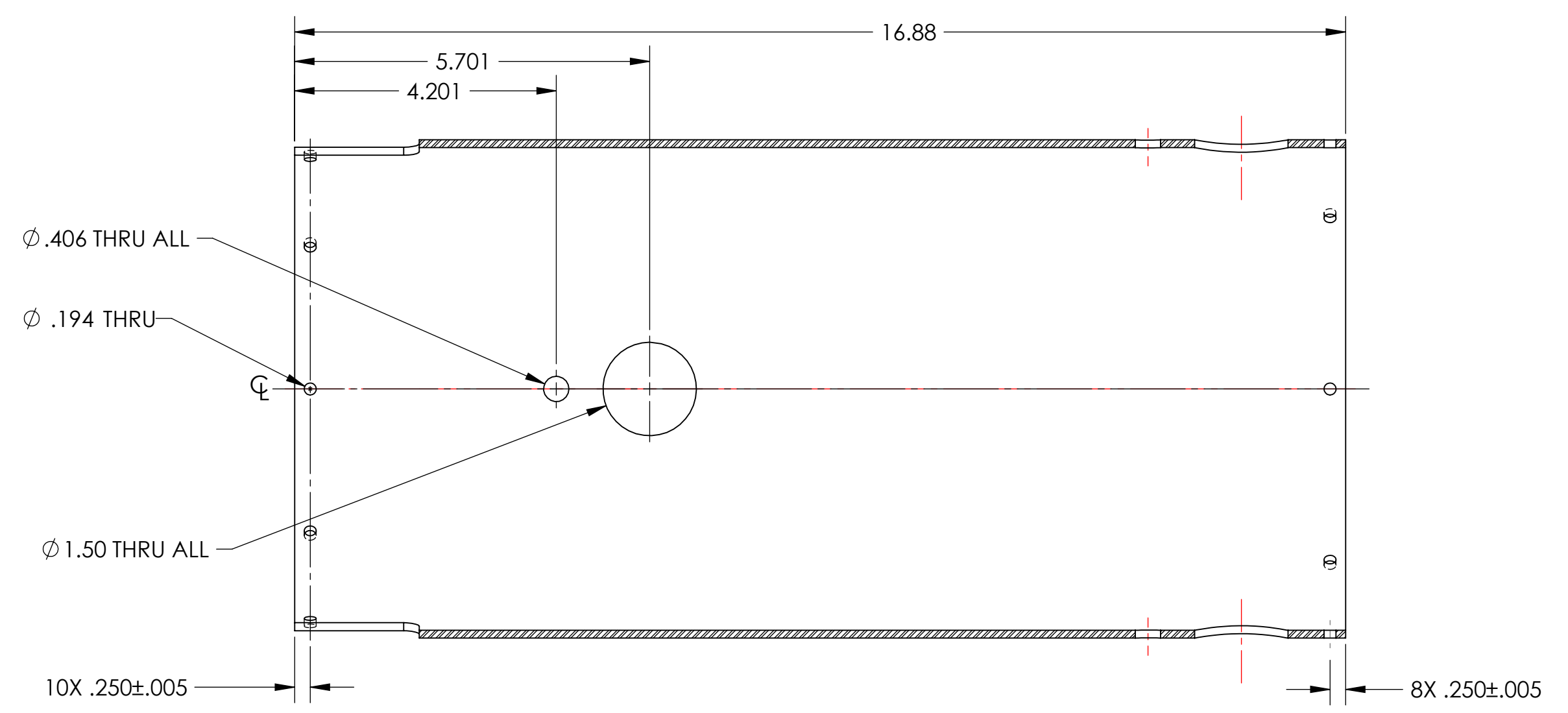
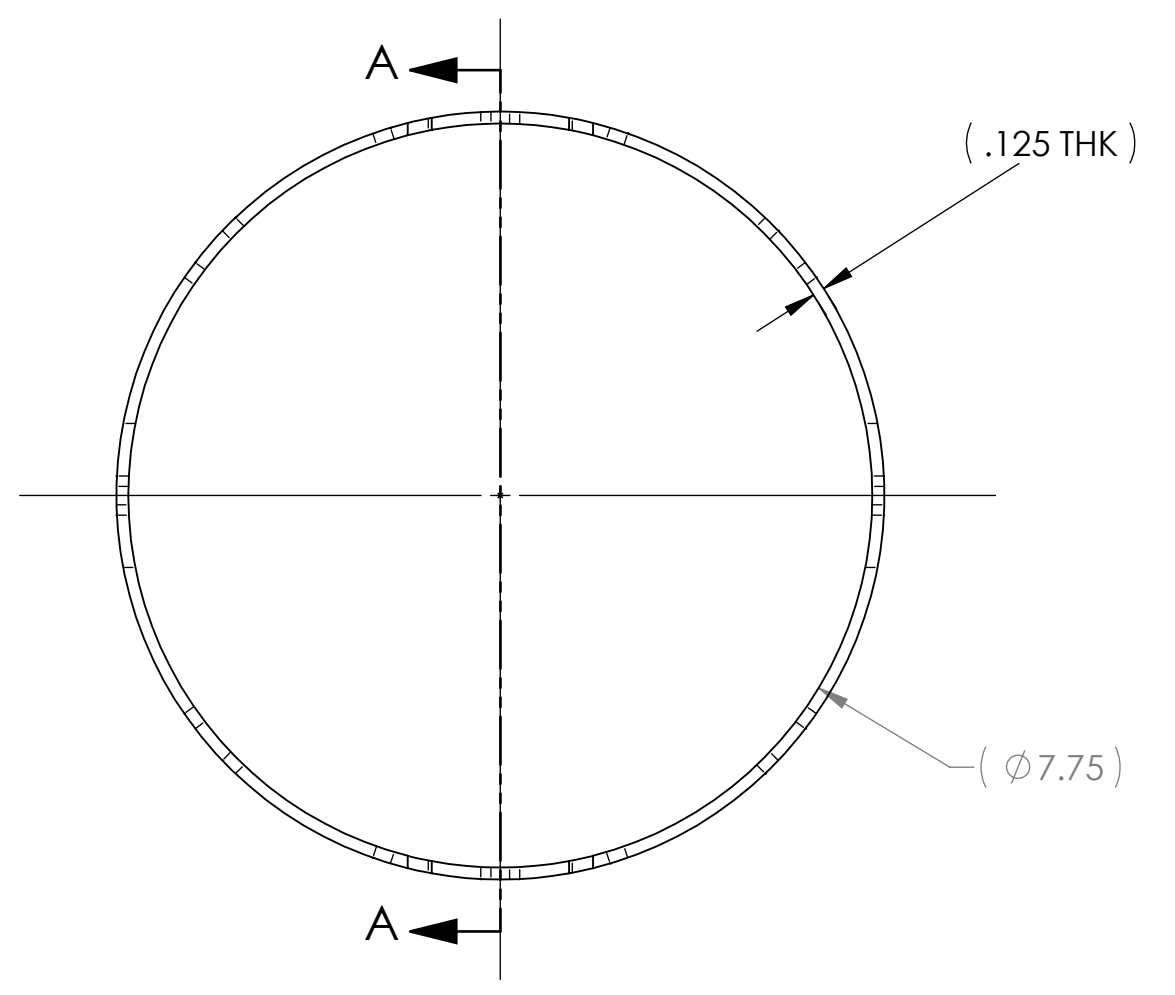
SECTION B-B



GENERAL VIEW
 NO SCALE
 FOR REFERENCE ONLY



SECTION C-C



SECTION A-A
 SCALE 1:2

NOTES AND TOLERANCES: (UNLESS OTHERWISE SPECIFIED)				LIGO CALIFORNIA INSTITUTE OF TECHNOLOGY MASSACHUSETTS INSTITUTE OF TECHNOLOGY		PART NAME					
DIMENSIONS ARE IN INCHES TOLERANCES: .XX ± .03 .XXX ± .015 ANGULAR ± 1.0°				1. INTERPRET DRAWING PER ASME Y14.5-1994. 2. REMOVE ALL SHARP EDGES, R.02 MIN. 3. DO NOT SCALE FROM DRAWING. 4. ALL MACHINING FLUIDS MUST BE FULLY SYNTHETIC, FULLY WATER SOLUBLE AND FREE OF SULFUR, SILICONE, AND CHLORINE.		SYSTEM ADVANCED LIGO		SUB-SYSTEM AOS		SLC DAMPING TUBE	
						NEXT ASSY D1000865		DESIGNER N.Nguyen	DATE 01 Jul 2010	SIZE D	DWG. NO. D1000864
MATERIAL 6061-T6 Al				FINISH 32 μinch		APPROVAL D. COYNE		DATE 01 SEP 2010	SCALE: 1:2	PROJECTION:	SHEET 1 OF 1

D1000864_AutLGO_AOS_SLC Damping Tube_PART PDM REV: X019_DRAWING PDM REV: X019