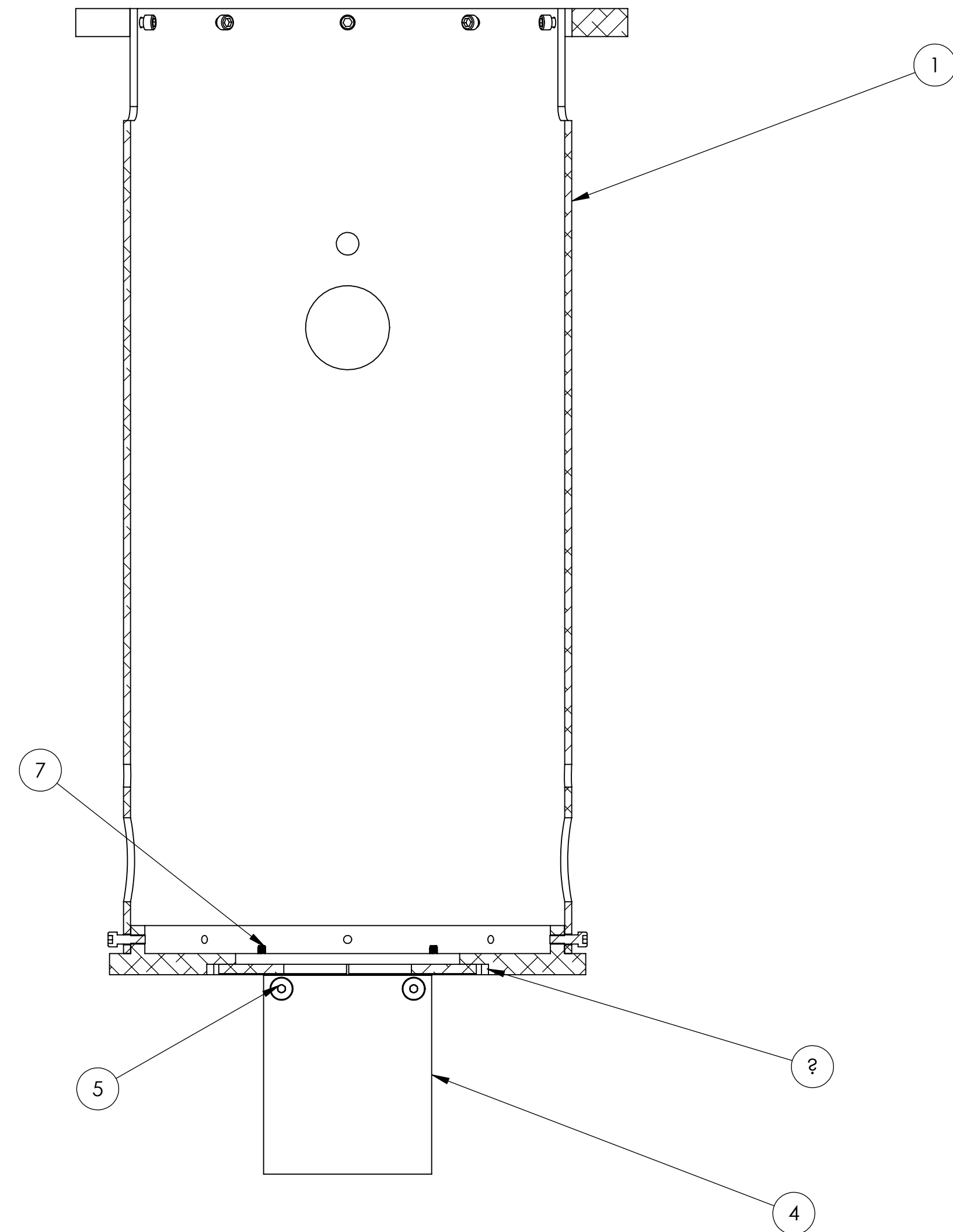
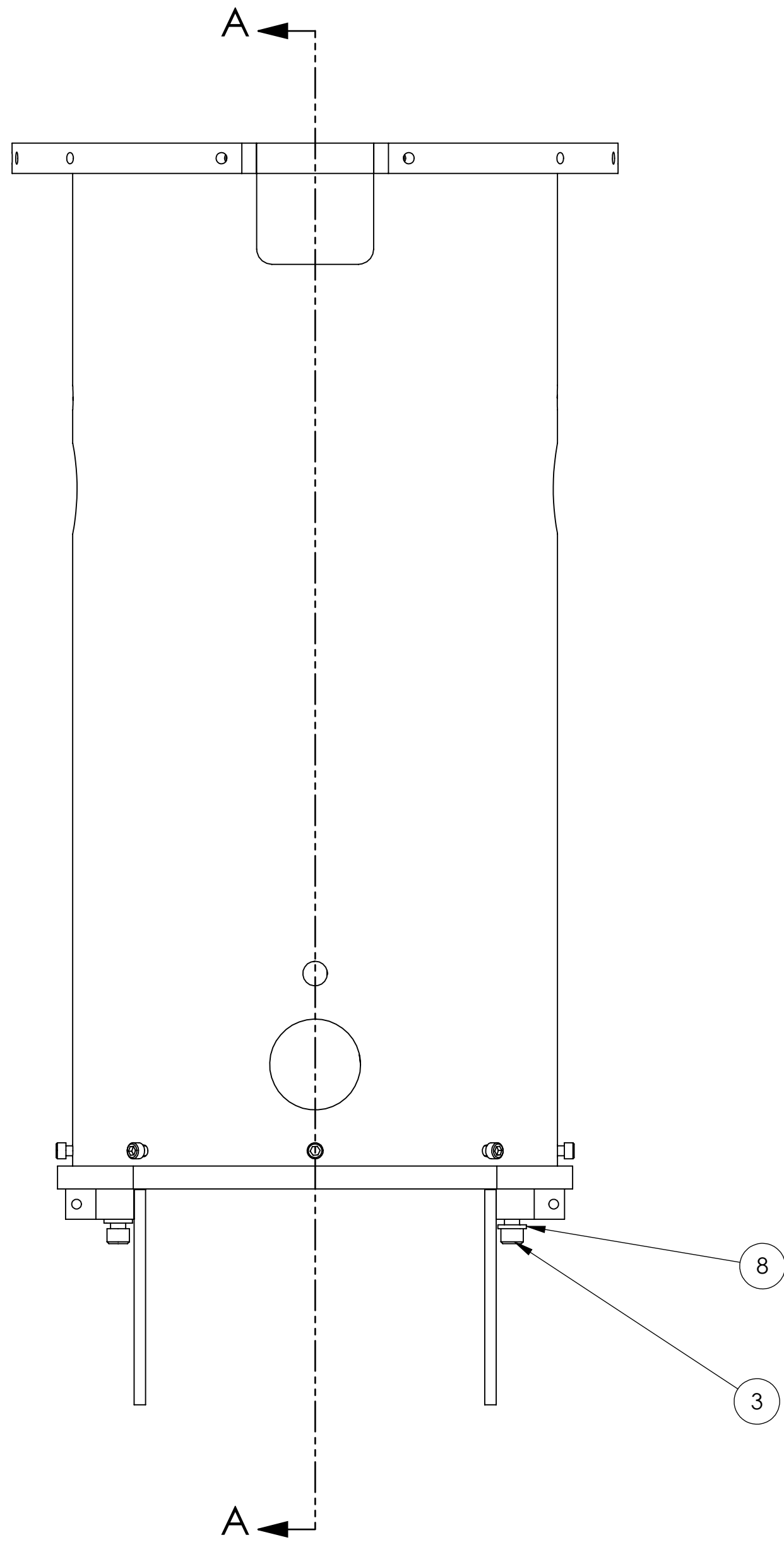
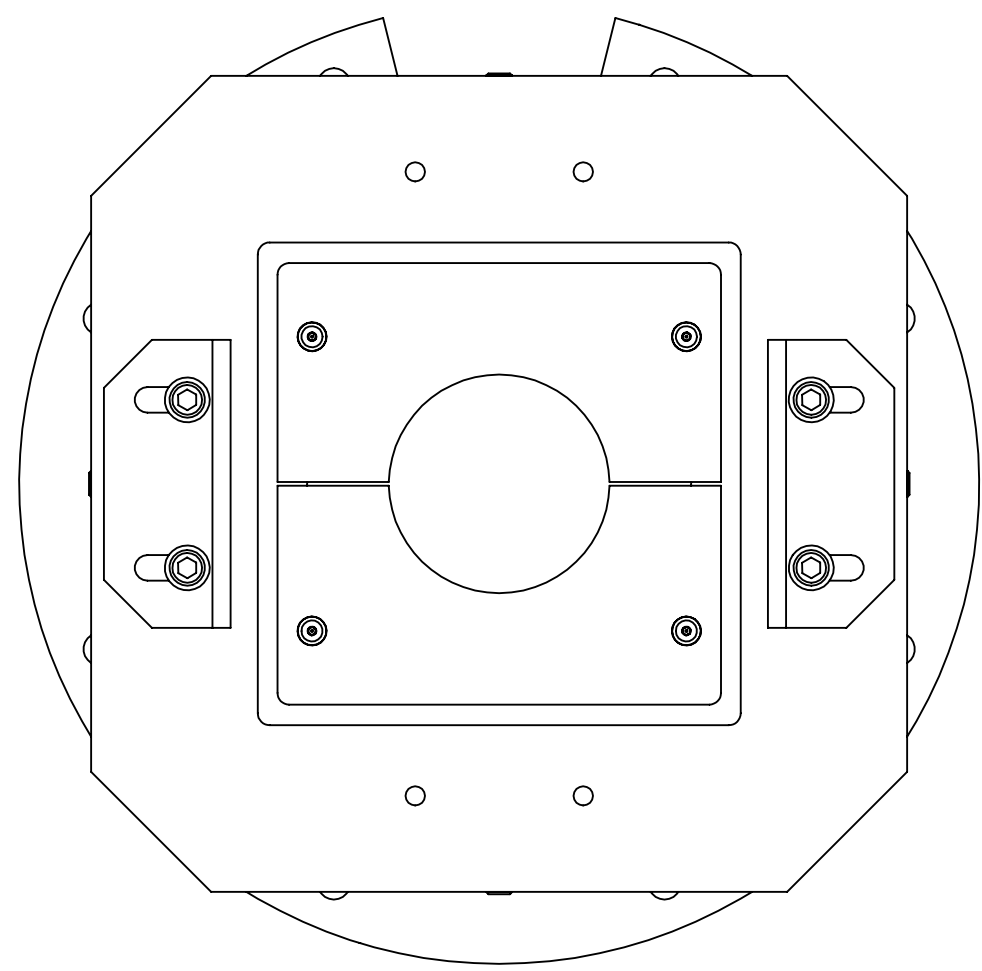
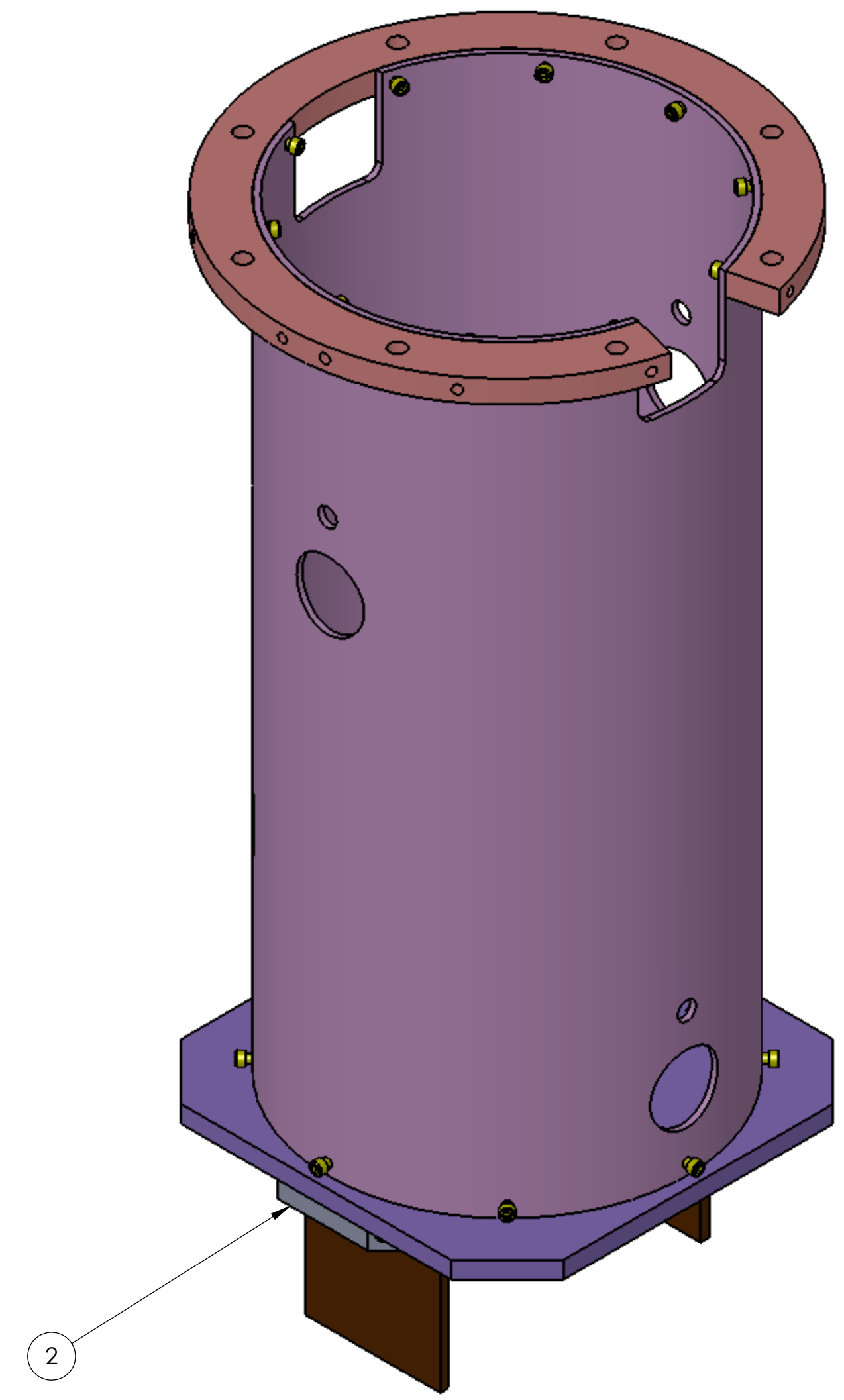


NOTES CONTINUED:

REV.	DATE	DCN #	DRAWING TREE #
v1	24 AUG 2010	E1000191	-
-	-	-	-
-	-	-	-



SECTION A-A
SCALE 1 : 2



NOTES AND TOLERANCES: (UNLESS OTHERWISE SPECIFIED)	
1. INTERPRET DRAWING PER ASME Y14.5-1994. 2. REMOVE ALL SHARP EDGES, R.02 MIN. 3. DO NOT SCALE FROM DRAWING. 4. ALL MACHINING FLUIDS MUST BE FULLY SYNTHETIC, FULLY WATER SOLUBLE AND FREE OF SULFUR, SILICONE, AND CHLORINE.	
DIMENSIONS ARE IN INCHES	
TOLERANCES:	
.XX ± .02	
.XXX ± .010	
ANGULAR ± 0.5°	
MATERIAL	N/A
FINISH	N/A

CALIFORNIA INSTITUTE OF TECHNOLOGY
MASSACHUSETTS INSTITUTE OF TECHNOLOGY

SYSTEM: **ADVANCED LIGO** SUB-SYSTEM: **AOS**

NEXT ASSY: **VARIABLE**

ITEM NO.	PART NUMBER	DESCRIPTION	MATERIAL	REQ	SPARE	TOTAL
8	NAS 620-C416	WASHER, FLAT, 1/4 (NAS 620-C416 OR EQUIVALENT)	18-8 SSSL	4		4
7	90585A214	FLAT HD SHCS #6-32X.50, McMaster Carr	18-8 SSSL	4		4
6	D1001120	SLC EARTHQUAKE STOP RING	6061-T6 Al	2		2
5	93791A512	FLAT HD SHCS#10-32 X 1/2, McMASTER	18-8 SSSL	4		4
4	D1000909	SLC COPPER PLATE	COPPER	2		2
3	92196A540	SCREW, SHCS# 0.25-20 UNC-2A X 0.75 , McMASTER	18-8 SSSL	4		4
2	D1000929	SLC COPPER SUPPORT PLATE	6061-T6 Al	2		2
1	D1000865	SLC DAMPING TUBE ASSEMBLY	N/A	1		1

PART NAME: **SLC EDDY CURRENT DAMPING ASSY**

DESIGNER	N.Nguyen	01 Jun 2010	SIZE	DWG. NO.	REV.
DRAFTER	N.Nguyen	24 AUG 2010	D	D1000863	v1
CHECKER	M. Smith	02 SEP 2010			
APPROVAL	D. Coyne	10 SEP 2010	SCALE: 1:1	PROJECTION:	SHEET 1 OF 1

D1000863_AslLIGO_AOS_SLC Eddy Current Damping Assy PART PDM REV: X-035 DRAWING PDM REV: X-004