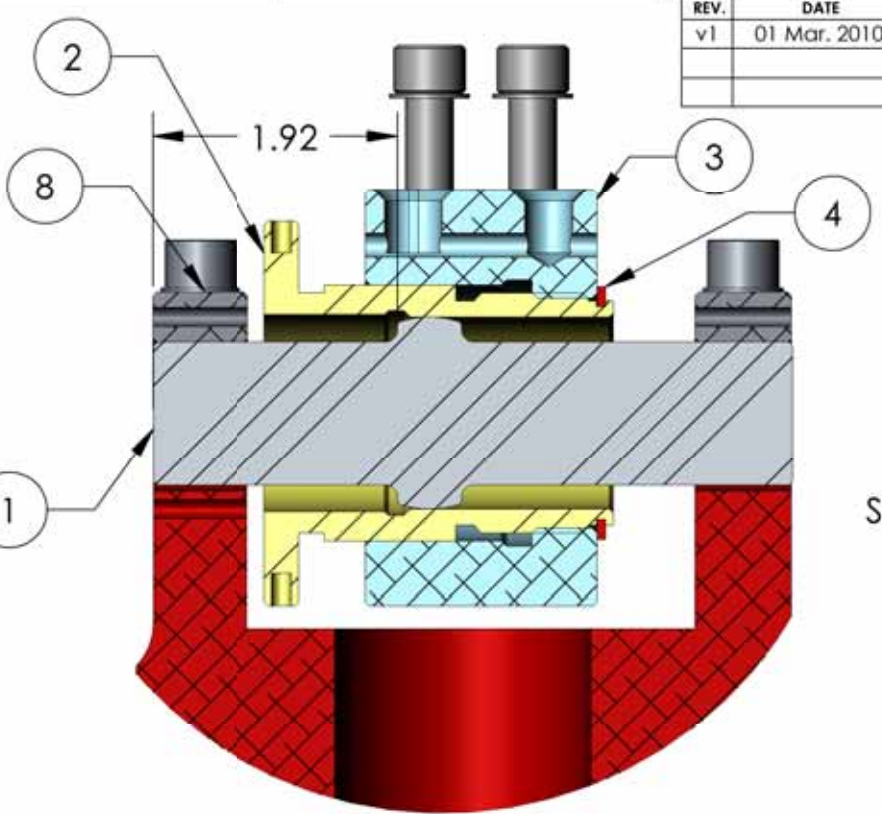
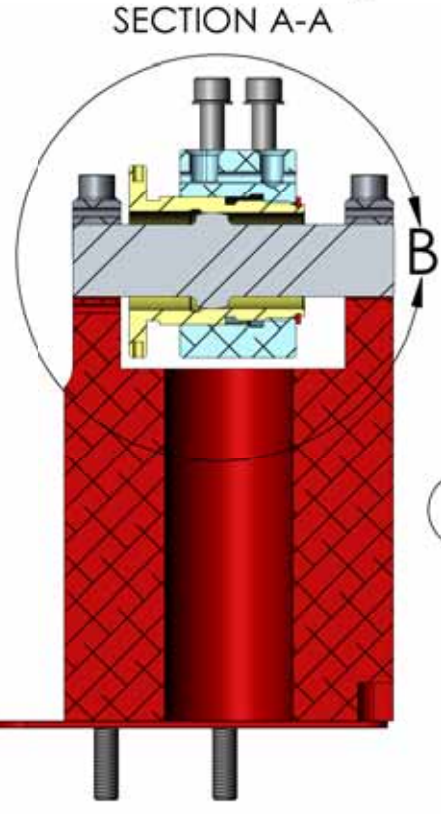
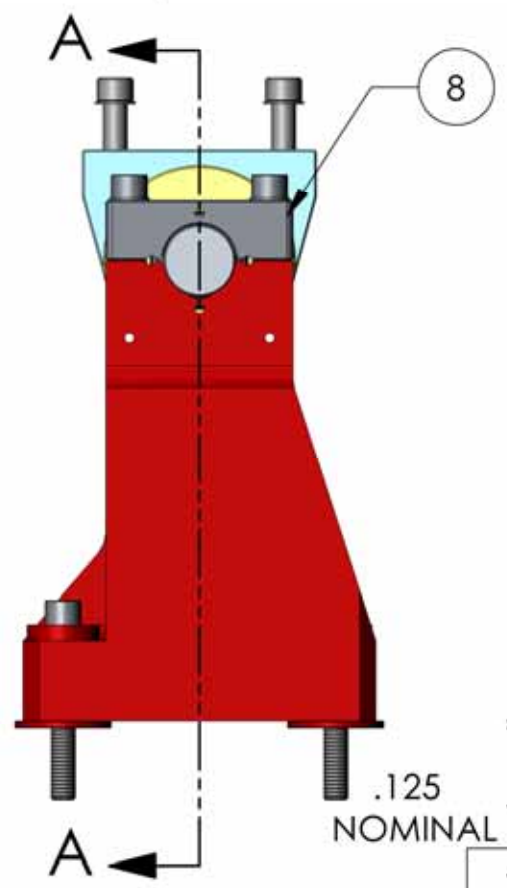
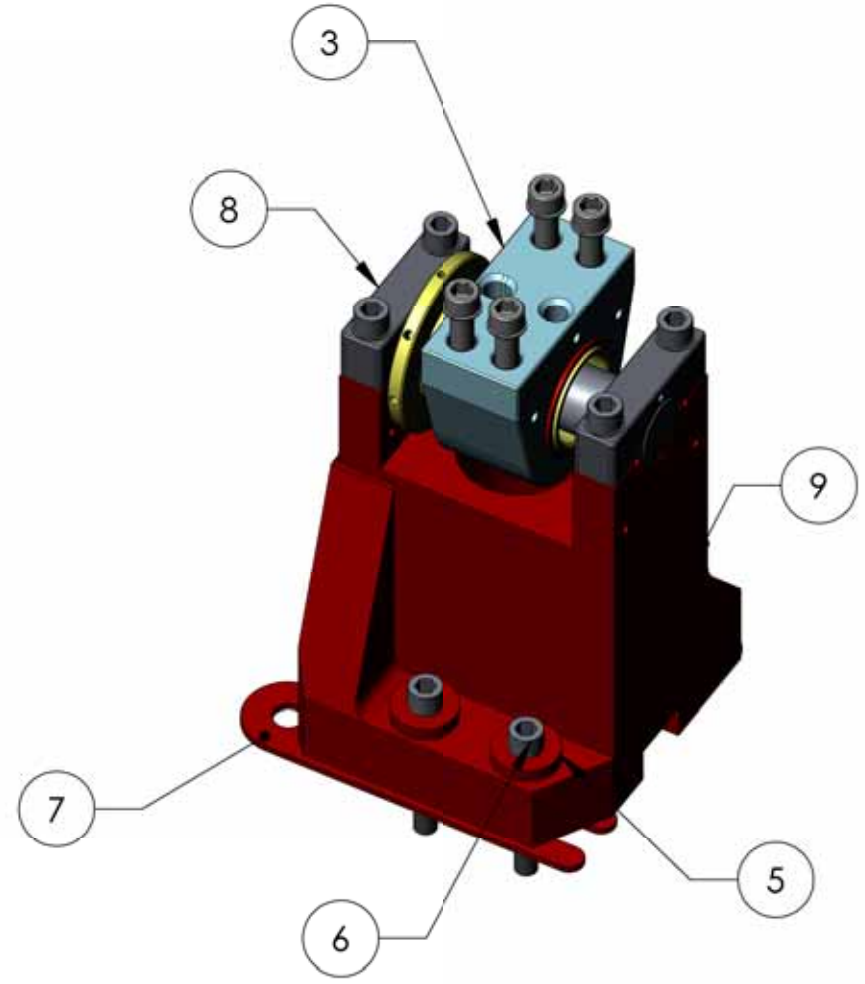


NOTES CONTINUED:
 5. VENDOR REFERENCES ARE PROVIDED AS EXAMPLES OF PARTS MEETING ALL REQUIRED SPECIFICATIONS. EQUIVALENTS ARE ALWAYS ACCEPTABLE UNLESS OTHERWISE SPECIFIED.
 6. REFER TO LIGO E0900357 FOR ASSEMBLY AND LOADING PROCEDURE.

| REV. | DATE | DCN # | DRAWING TREE # |
|------|--------------|----------|----------------|
| v1 | 01 Mar. 2010 | E1000115 | E1000025 |



DETAIL B
SCALE 2 : 3



| ITEM NO. | PART NUMBER | DESCRIPTION | MATERIAL | Stage 0-1 Locked/QTY. |
|----------|----------------------|---|------------------------|-----------------------|
| 12 | HOLOKROME_78102 | SHCS, 3/8"-16x1.5" | 18-8 SS | 4 |
| 11 | McMASTER_92196A627 | SCREW SHCS, 3/8-16 X 1.38 LG. | 18-8 SSTL | 4 |
| 10 | UC_COMPONENTS_WFV-38 | Washer Vented, .39 ID X .62 OD X .032 THK #3/8" | 18-8 SS | 8 |
| 9 | D1000861 | POST, STAGE 0-1 LOCKER, aLIGO BSC ISI | 304 SSTL | 1 |
| 8 | D1000862 | PIN CAP, LOCKER, aLIGO BSC-ISI | 2024-T351 AI | 2 |
| 7 | D0901805 | STAGE 0-1, LOCKER, BASE SHIM SPACER | 304 SSTL | 2 |
| 6 | MCMaster_92196A635 | SHCS, 3/8"-16x2.75" | 18-8 SS | 4 |
| 5 | D047942 | WASHER ADJUSTABLE FOOT, aLIGO BSC ISI | 304, 316 OR 302 SSTL | 4 |
| 4 | SMALLEY_FSE-0175 | SNAP RING 1.75 OD X 1.64 ID X .067 THK | 304, 316 OR 302 SSTL | 1 |
| 3 | D1000908 | HOUSING LOCKER SLEEVE, aLIGO BSC ISI | 2024-T351 AI | 1 |
| 2 | D1000860 | SLEEVE, STAGE 0-1 LOCKER, aLIGO BSC-ISI | AISI 440C PER AMS 5630 | 1 |
| 1 | D047935 | LOCKER SPHERICAL PIN | AISI 440C PER AMS 5630 | 1 |

NOTES AND TOLERANCES: (UNLESS OTHERWISE SPECIFIED)

1. INTERPRET DRAWING PER ASME Y14.5-1994.
 2. REMOVE ALL SHARP EDGES, R.02 MIN.
 3. DO NOT SCALE FROM DRAWING.
 4. ALL MACHINING FLUIDS MUST BE FULLY SYNTHETIC, FULLY WATER SOLUBLE AND FREE OF SULFUR, SILICONE, AND CHLORINE.

DIMENSIONS ARE IN INCHES
 TOLERANCES:
 XX ± N/A
 XXX ± N/A
 ANGULAR ± N/A*

LIGO CALIFORNIA INSTITUTE OF TECHNOLOGY MASSACHUSETTS INSTITUTE OF TECHNOLOGY
 SYSTEM: ADVANCED LIGO SUB-SYSTEM: SEI
 NEXT ASSY: D0901182

PART NAME: Stage 0-1 Locker aLIGO BSC-ISI

| | | | | | |
|----------|-------------|--------------|--------|----------|-------------|
| DESIGNER | SEI | 08 APR 2010 | SIZE | DWG. NO. | REV. |
| DRAFTER | M.HILLARD | 01 Mar. 2010 | B | D1000854 | v1 |
| CHECKER | J.MATICHARD | 01 Mar. 2010 | SCALE: | 1:3 | PROJECTION: |
| APPROVAL | K.MASON | 01 Mar. 2010 | SHEET | 1 OF 1 | |

D1000854 Stage 0-1 Lockers, aLIGO BSC-ISI, PART PDM REV: X-008, DRAWING PDM REV: X-003