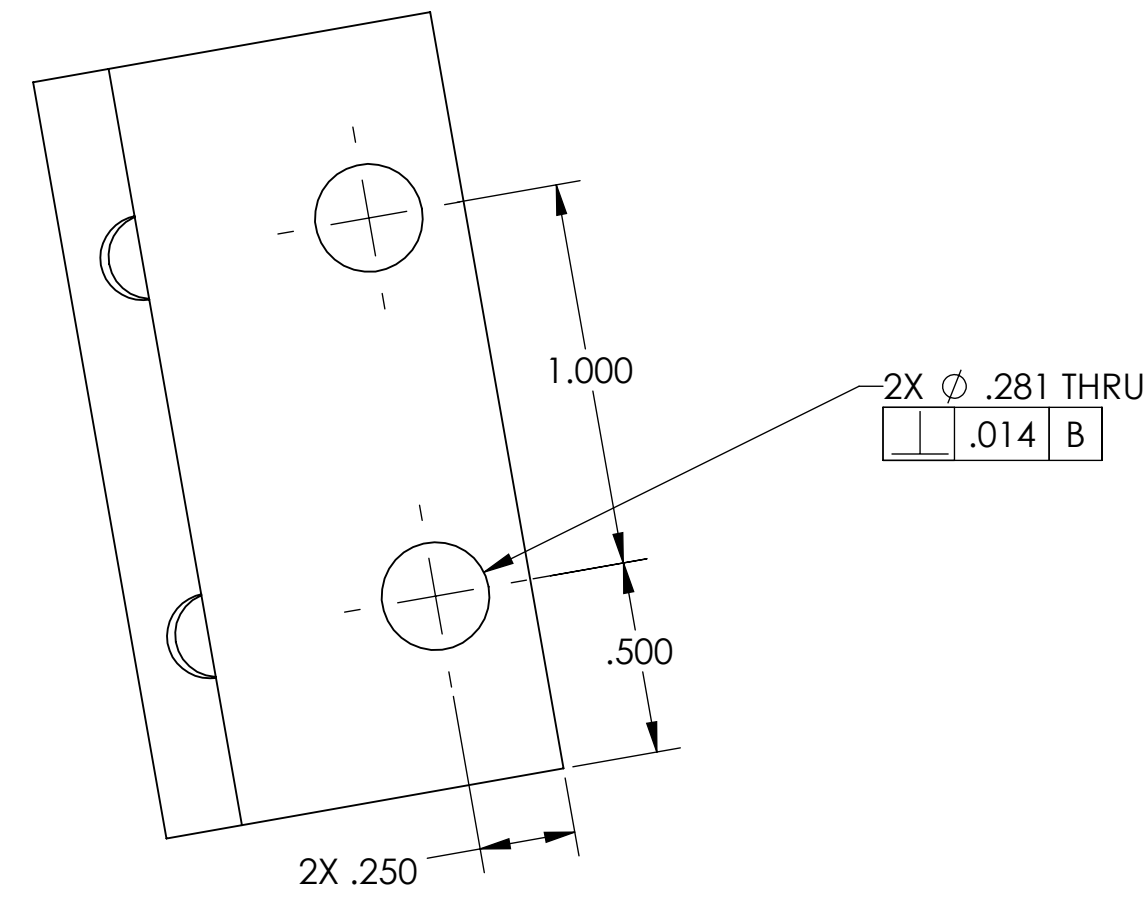
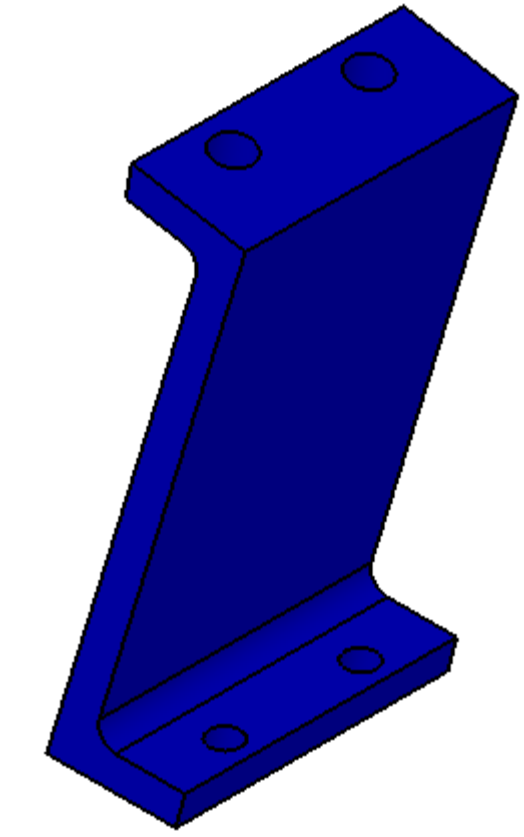
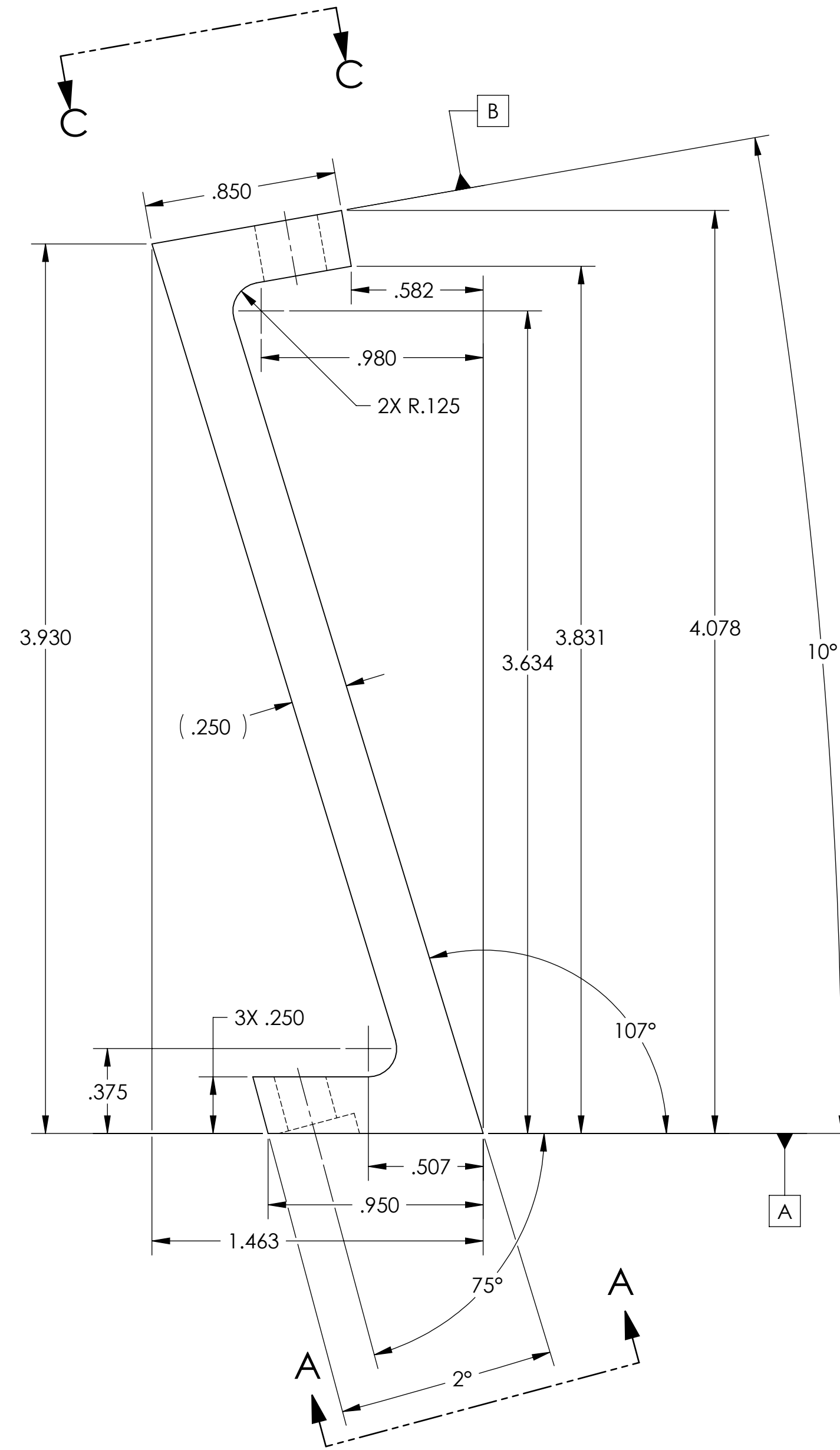
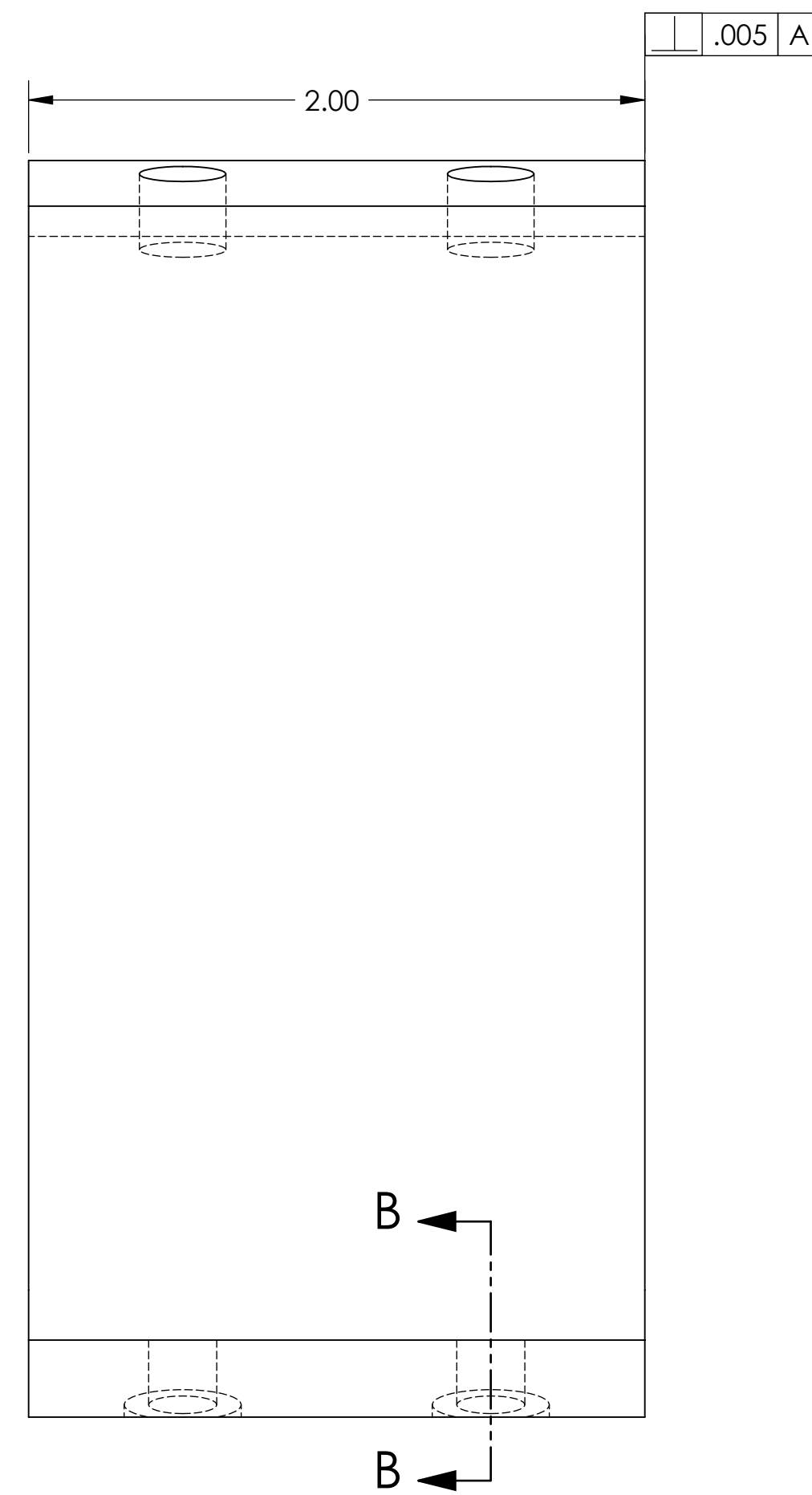


- NOTES: UNLESS OTHERWISE SPECIFIED**
1. INTERPRET DRAWING PER ASME Y14.5-1994.
 2. REMOVE ALL SHARP EDGES 0.005" to 0.015".
 3. DO NOT SCALE FROM DRAWING.
 4. ALL MACHINING FLUIDS MUST BE FULLY SYNTHETIC, FULLY WATER SOLUBLE AND FREE OF SULFUR, SILICONE, AND CHLORINE. REFER TO LIGO E0900237 FOR LIST OF APPROVED COOLANTS.
 5. SCRIBE, ENGRAVE (A VIBRATORY TOOL MAY BE USED), LASER MARK OR MECHANICALLY STAMP (NO INKS OR DYES) DRAWING PART NUMBER, REVISION (AND VARIANT OR "TYPE" IF APPLICABLE) ON NOTED SURFACE OF PART FOLLOWED ON THE NEXT LINE WITH A THREE DIGIT SERIAL NUMBER. SERIAL NUMBERS START AT 001 FOR THE FIRST ARTICLE AND PROCEED CONSECUTIVELY. USE MINIMUM 0.12" HIGH CHARACTERS, UNLESS THE SIZE OF THE PART DICTATES SMALLER CHARACTERS. EXAMPLE: DXXXXXX-VY, TYPE-XX, S/N XXX
 6. MACHINE ALL SURFACES TO REMOVE OXIDES AND MILL FINISH. USE OF ABRASIVE REMOVAL TECHNIQUES IS NOT ALLOWED. REFER TO LIGO-E0900364
 7. ALL PARTS SHALL BE MANUFACTURED IN ACCORDANCE WITH LIGO SPECIFICATION E0900364.
 8. ALL MATERIAL IS TO BE VIRGIN MATERIAL (i.e. NO WELD REPAIRS, PLUGS OR RECYCLED MATERIAL). NO REPAIRS SHALL BE MADE UNLESS APPROVED IN ADVANCE, AND IN WRITING, BY LIGO LABORATORY. REFER TO LIGO-E0900364.

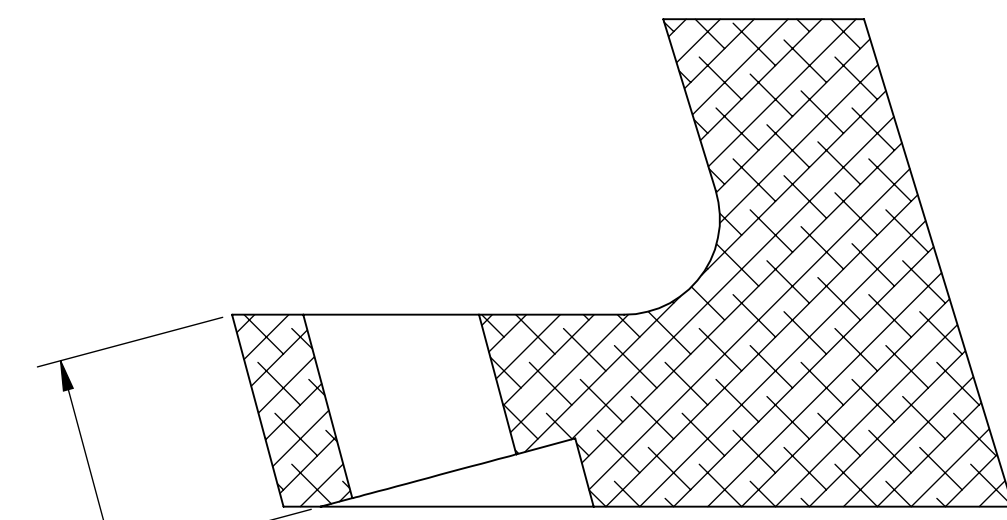
REV.	DATE	DCN #	DRAWING TREE #
v1	19 MAY 2011	E1000822-v1	-
v2	31 JAN 2012	E1000822-v3	-
-	-	-	-



VIEW C-C
SCALE 2:1



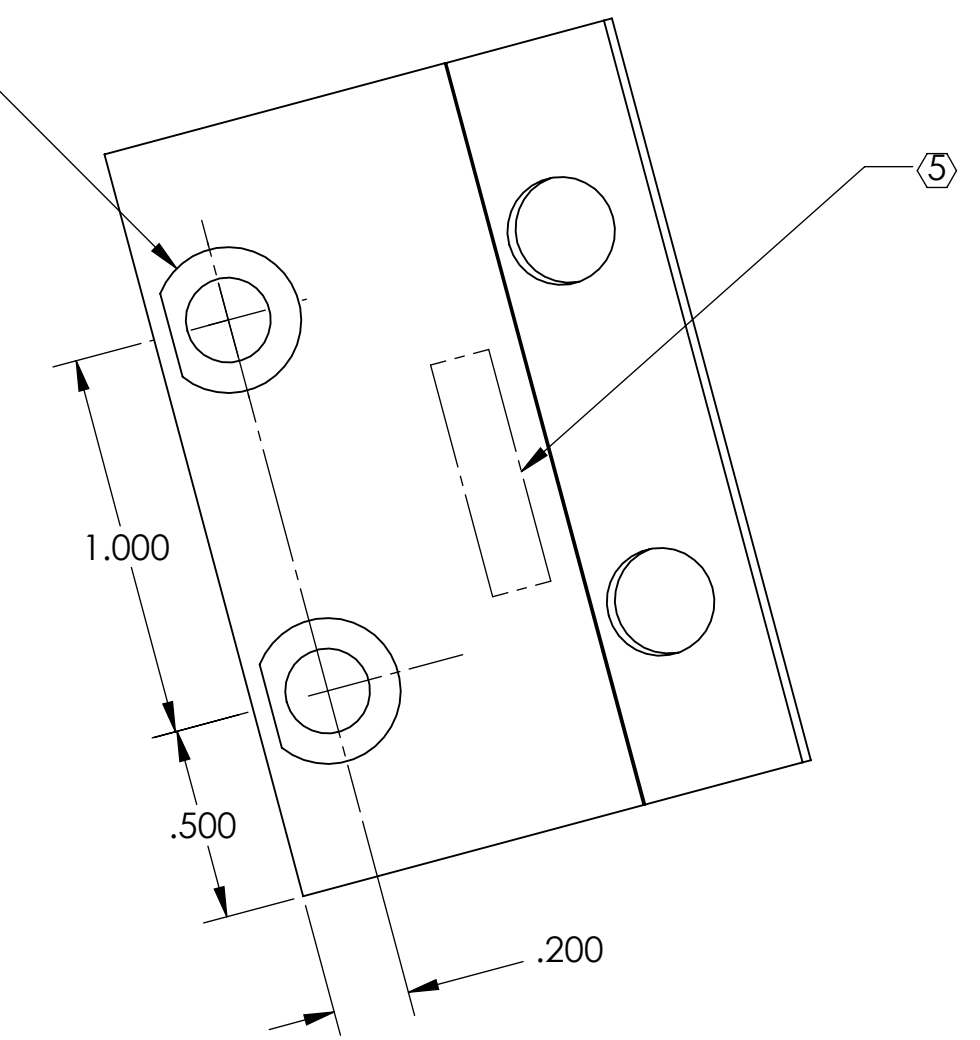
GENERAL VIEW
FOR REFERENCE ONLY
NO SCALE



.27
FLAT CLEARANCE FOR
#10 SOCKET HEAD CAP SCREW

SECTION B-B
SCALE 4:1

2X Ø .221 ∇ .50
Ø .38
SEE SECTION B-B FOR
COUNTERBORE DEPTH



VIEW A-A

NOTES AND TOLERANCES: (UNLESS OTHERWISE SPECIFIED)				LIGO CALIFORNIA INSTITUTE OF TECHNOLOGY MASSACHUSETTS INSTITUTE OF TECHNOLOGY				PART NAME				
DIMENSIONS ARE IN INCHES								STANDOFF SPACER_RIGHT				
TOLERANCES: .XX ± .01 .XXX ± .005 ANGULAR ± 0.5°								SYSTEM ADVANCED LIGO		SUB-SYSTEM AOS		DESIGNER H. KELMAN
MATERIAL 6061-T6 Al				FINISH 63 μ inch		NEXT ASSY D1002863		DRAFTER TG. NGUYEN	9 NOV 2010	SCALE: 2:1		SHEET 1 OF 1
								CHECKER M. SMITH	25 JUL 2011	PROJECTION:		
								APPROVAL D. COYNE	25 JUL 2011			

D1000783_dLIGO_MC_Tube_Baffle_Site_Mount_Standoff_Spacers_Right_PART_PDM_REV: X-024 DRAWING PDM REV: X-024