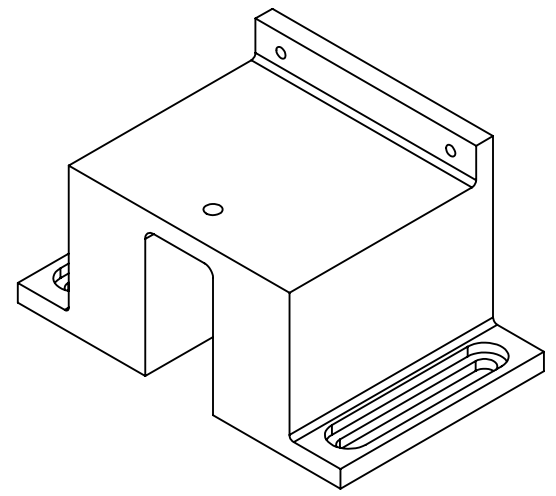
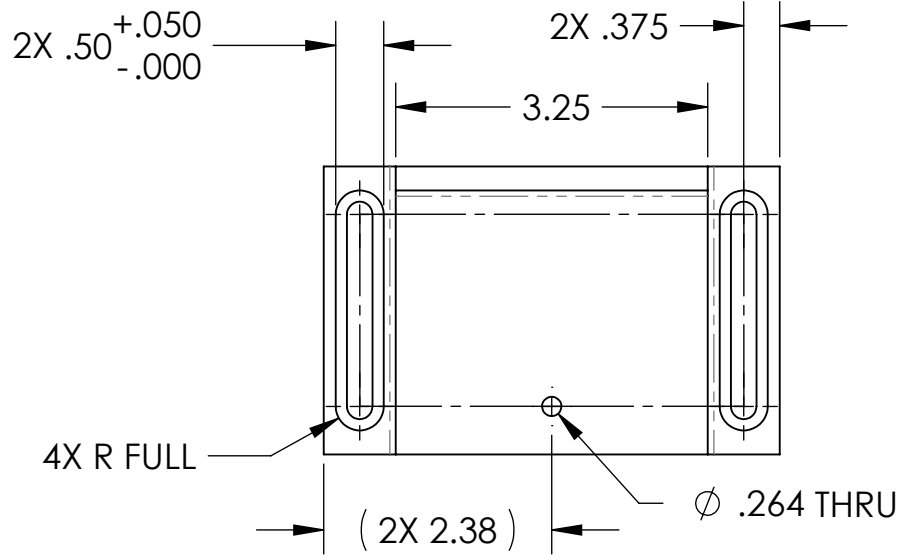


D1000715_HARTMANN SENSOR CAMERA MOUNT, PART PDM REV: X-015, DRAWING PDM REV: X-007

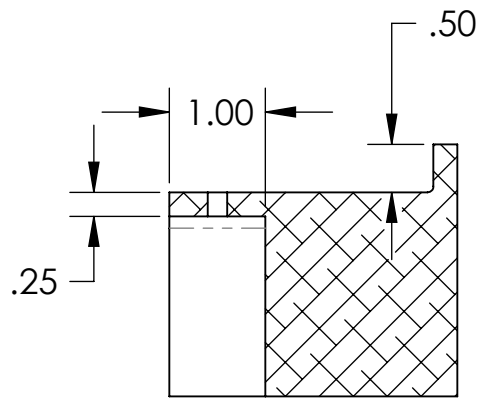
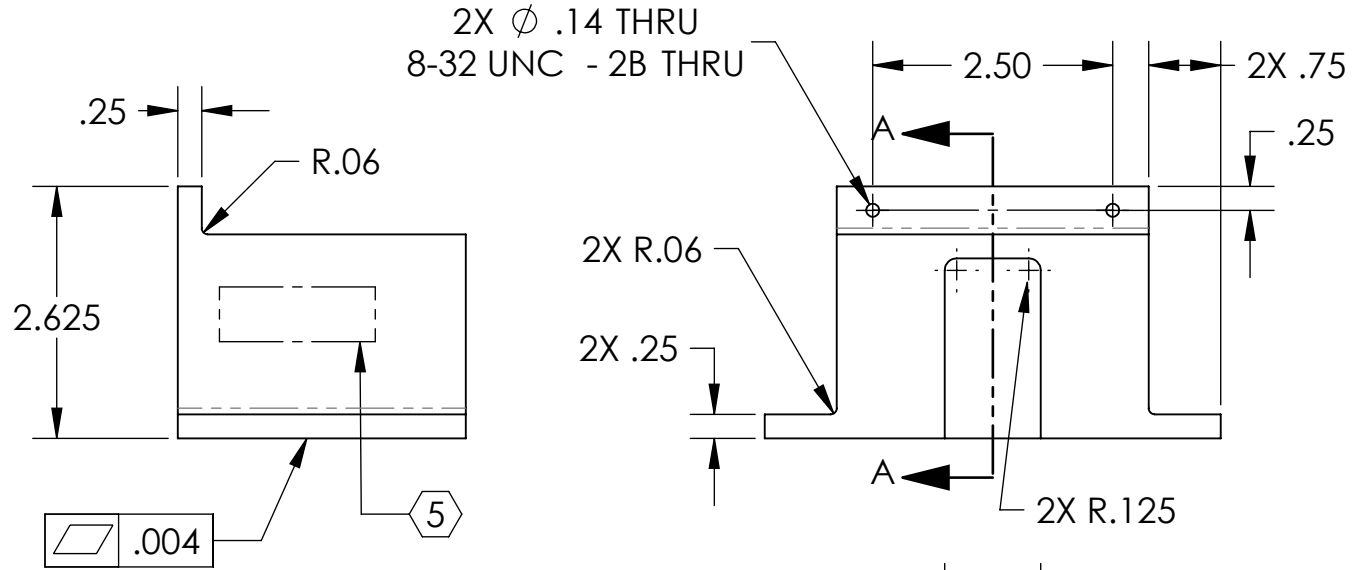
NOTES CONTINUED:
 5 SCRIBE, ENGRAVE (A VIBRATORY TOOL MAY BE USED), LASER MARK OR MECHANICALLY STAMP (NO INKS OR DYES) DRAWING PART NUMBER, REVISION (AND VARIANT OR "TYPE" IF APPLICABLE) ON NOTED SURFACE OF PART FOLLOWED ON THE NEXT LINE WITH A THREE DIGIT SERIAL NUMBER. SERIAL NUMBERS START AT 001 FOR THE FIRST ARTICLE AND PROCEED CONSECUTIVELY. USE MINIMUM 0.12" HIGH CHARACTERS, UNLESS THE SIZE OF THE PART DICTATES SMALLER CHARACTERS. EXAMPLE: DXXXXXX-VY, TYPE-XX, S/N XXX

CONFIGURATION	DESCRIPTION
-01	SOLID BASE
-02	FINNED BASE (SHEET 2)

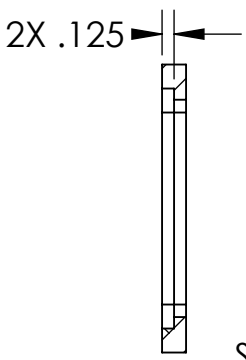
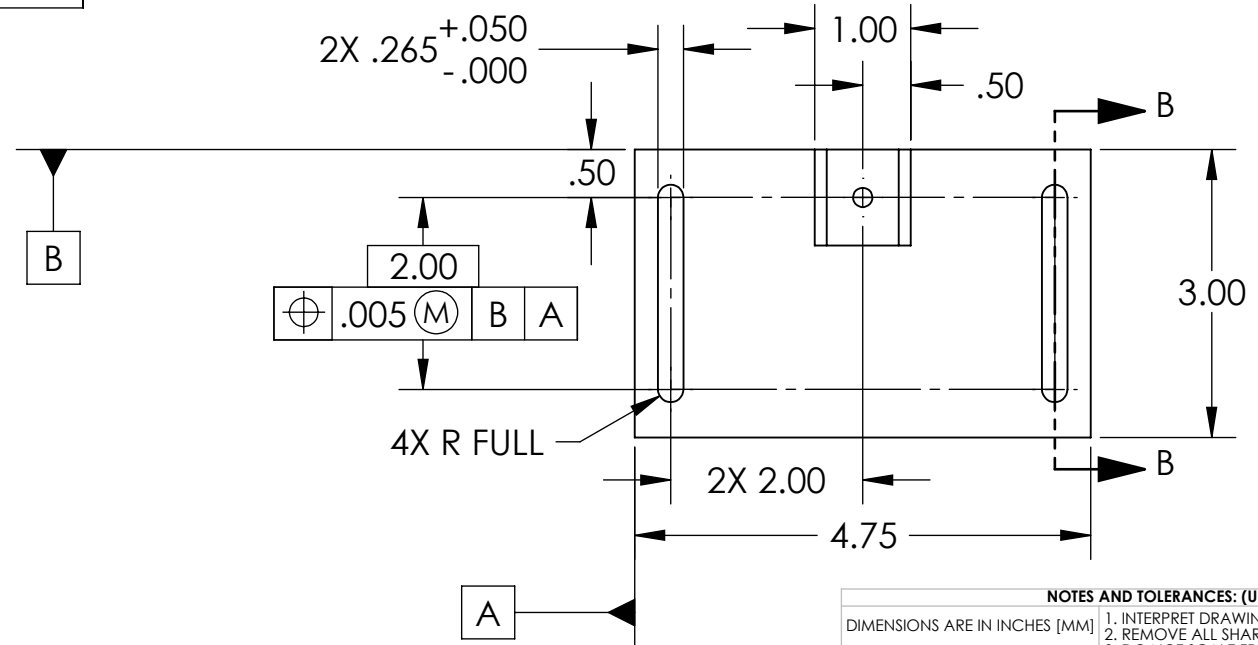
REV.	DATE	DCN #	DRAWING TREE #
v4	28-FEB-2011	E1100147-v1	E1100148-v1
-	-	-	-
-	-	-	-



CONFIGURATION -01
SOLID BASE



SECTION A-A
SCALE 1 : 2



SECTION B-B
SCALE 1 : 2

NOTES AND TOLERANCES: (UNLESS OTHERWISE SPECIFIED)

- INTERPRET DRAWING PER ASME Y14.5-1994.
- REMOVE ALL SHARP EDGES, R.02 MIN.
- DO NOT SCALE FROM DRAWING.
- ALL MACHINING FLUIDS MUST BE FULLY SYNTHETIC, FULLY WATER SOLUBLE AND FREE OF SULFUR, SILICONE, AND CHLORINE.

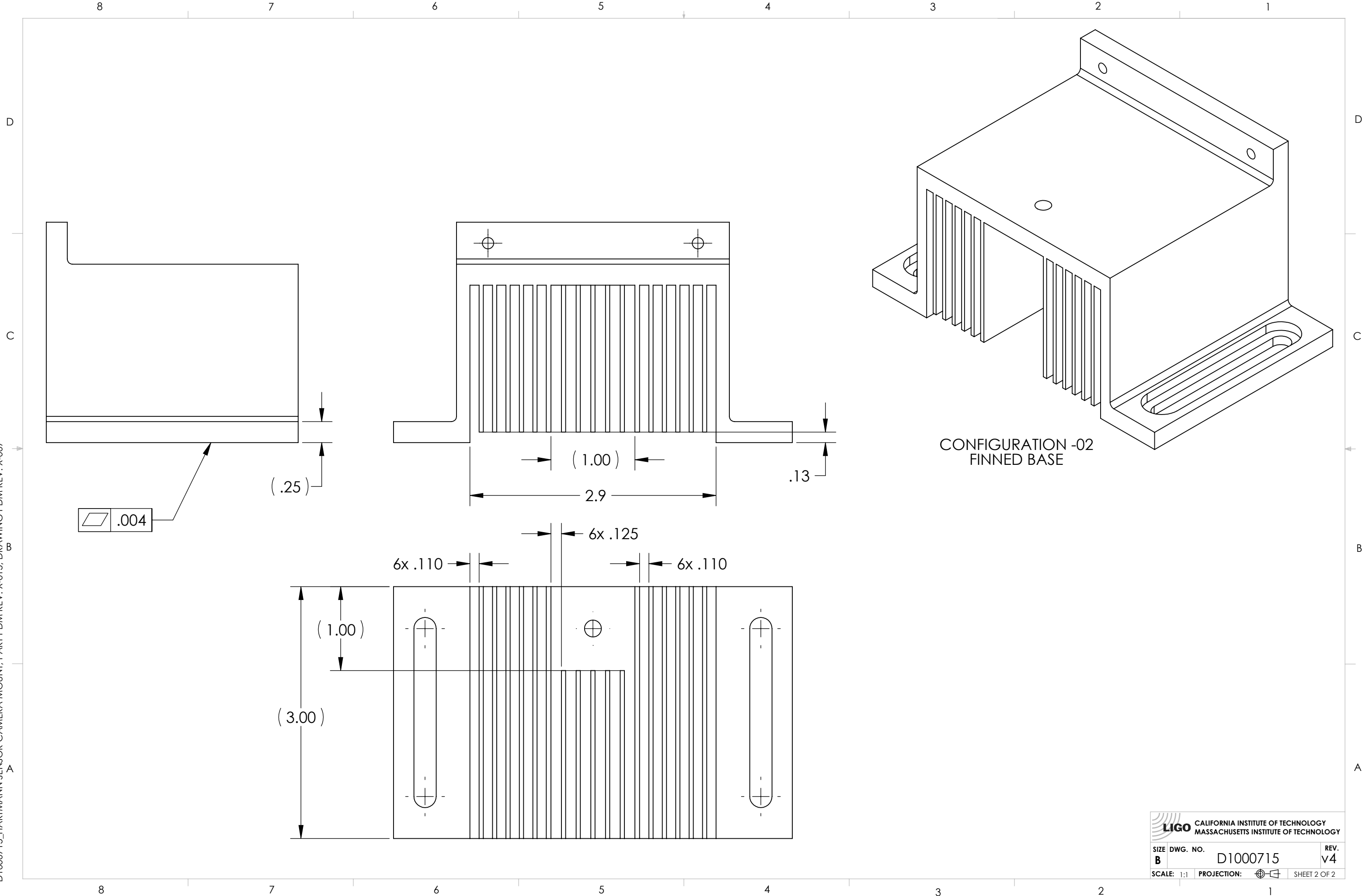
DIMENSIONS ARE IN INCHES [MM]

TOLERANCES:
 .XX ± .01
 .XXX ± .005
 ANGULAR ± 0.5°


MATERIAL	6061 Alloy	FINISH	63 μinch
SYSTEM	ADVANCED LIGO	SUB-SYSTEM	AOS
NEXT ASSY	D1000657		

CALIFORNIA INSTITUTE OF TECHNOLOGY MASSACHUSETTS INSTITUTE OF TECHNOLOGY		PART NAME HARTMANN SENSOR CAMERA MOUNT	
DESIGNER	M. JACOBSON 26-MAR-2010	SIZE	DWG. NO.
DRAFTER	M. JACOBSON 22 APR 2010	B	D1000715
CHECKER	B. ANDERSON 15 FEB 2011	SCALE:	1:1
APPROVAL	A. BROOKS 22 APR 2010	PROJECTION:	
REV.	v4	SHEET	1 OF 2

D1000715_HARTMANN SENSOR CAMERA MOUNT, PART PDM REV: X-015, DRAWING PDM REV: X-007



CONFIGURATION -02
FINNED BASE

 CALIFORNIA INSTITUTE OF TECHNOLOGY MASSACHUSETTS INSTITUTE OF TECHNOLOGY		
SIZE B	DWG. NO. D1000715	REV. v4
SCALE: 1:1	PROJECTION: 	SHEET 2 OF 2