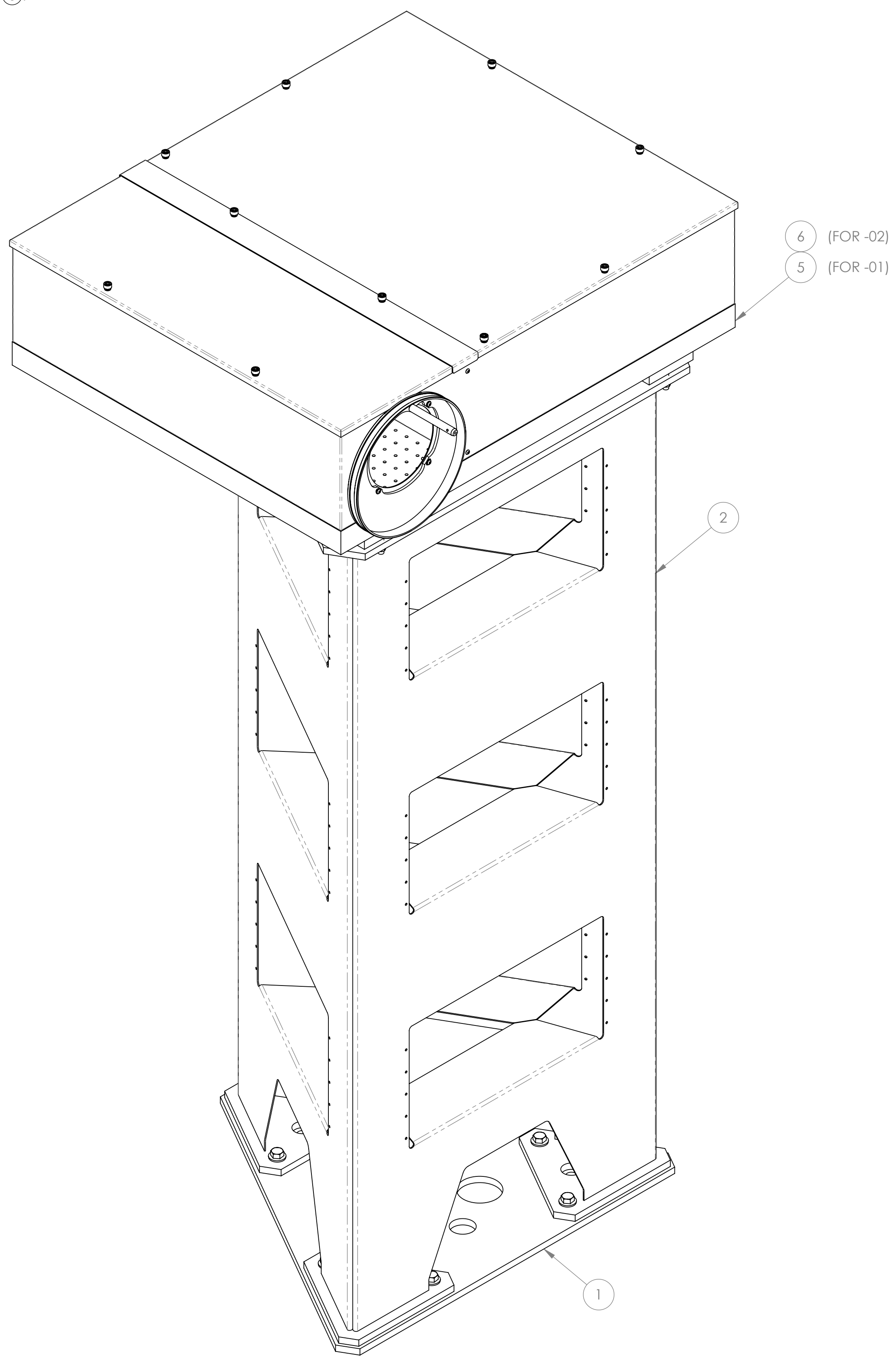


NOTES CONTINUED:
 (3) NOTED DIMENSION MAY VARY AFTER LEVELING OF ITEM (5)/(6).

REV.	DATE	DCN #	DRAWING TREE #
v1	21 JAN 2014	E1300649-x0	-
v2	25 APR 2014	-	-



**-01 SHOWN
(ETMX)**

ITEM NO.	PART NUMBER	DESCRIPTION	REV.	MATERIAL	-01 (ETMX) /QTY.	-02 (ETMY) /QTY.
10	92196A628 (McM-Carr) or equiv	SCREW, SOCKET HEAD CAP, 3/8-16 UNC-2A X 1.5 LONG		18-8 SSTL	3	3
9	NAS 620-C616	WASHER, FLAT, 3/8		300 SSTL	3	3
8	91847A031 (McM-Carr) or equiv	JAM NUT, 3/8-16		18-8 SSTL	6	6
7	92765A512 (McM-Carr) or equiv	SCREW, SOCKET SET, 3/8-16 X 1-1/2L, OVAL POINT		Alloy Steel	3	3
6	D1201072-02	ALIGO AOS PCAL TRANSMITTER MODULE, Y-ARM	v1	N/A	-	1
5	D1201072-01	ALIGO AOS PCAL TRANSMITTER MODULE, X-ARM	v1	N/A	1	-
4	91286A368 (McM-Carr) or equiv	HEX HEAD CAP SCREW, GRADE 8, 1/2-20 X 1.25L, ARMOR COAT		Alloy Steel	9	9
3	95221A115 (McM-Carr) or equiv	BELLEVILLE WASHER, 13MM ID, 29MM OD, 3MM TH, 3.95MM HT, ZN PL		Alloy Steel	9	9
2	D1000675	ADLOG AOS PHOTCAL TX PIER INSTALLATION [ETMY H1]	v4	N/A	1	1
1	D1000670	ALIGO AOS PIER FOOTING 3	v1	6061-T6 Al	1	1

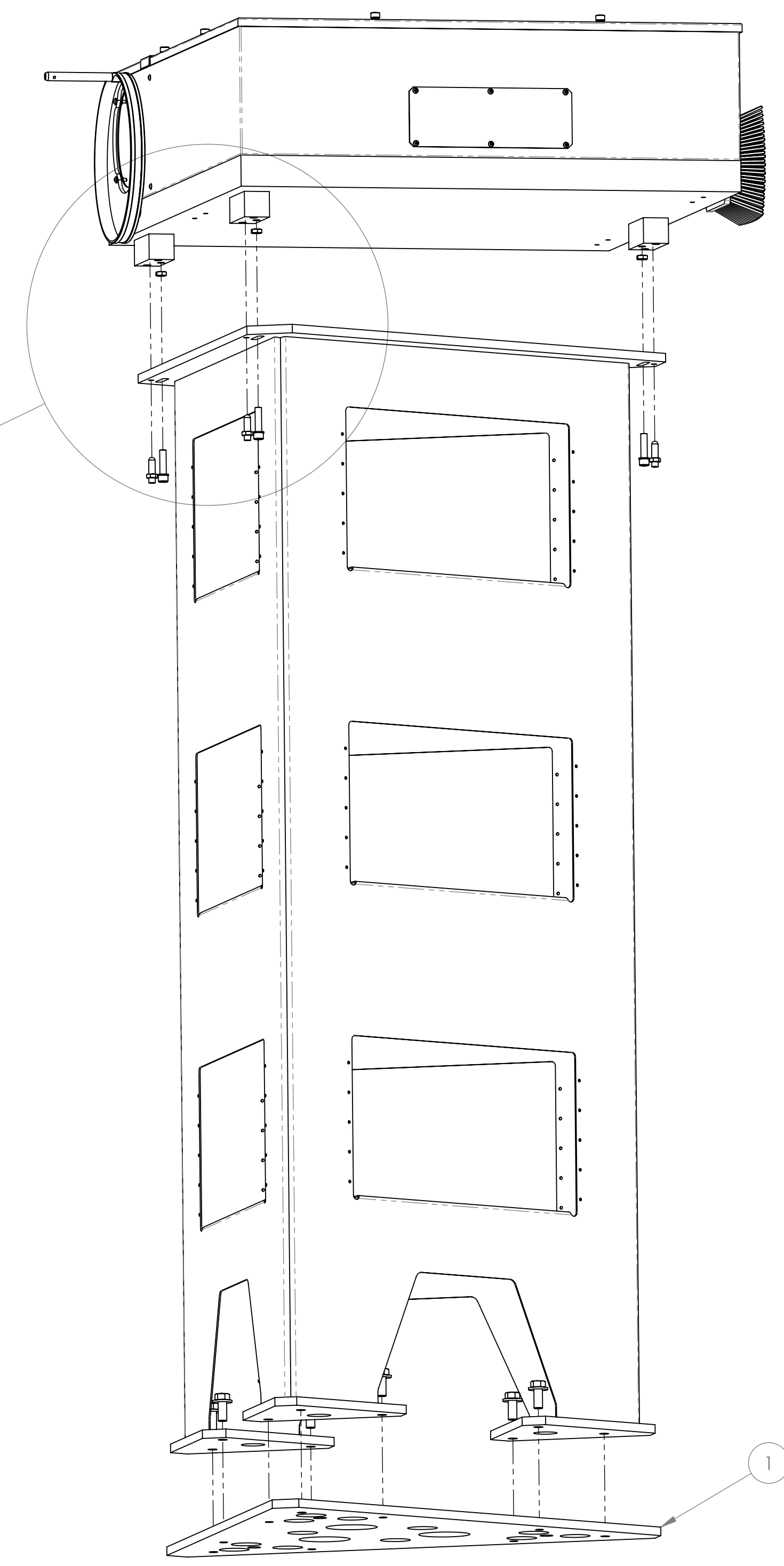
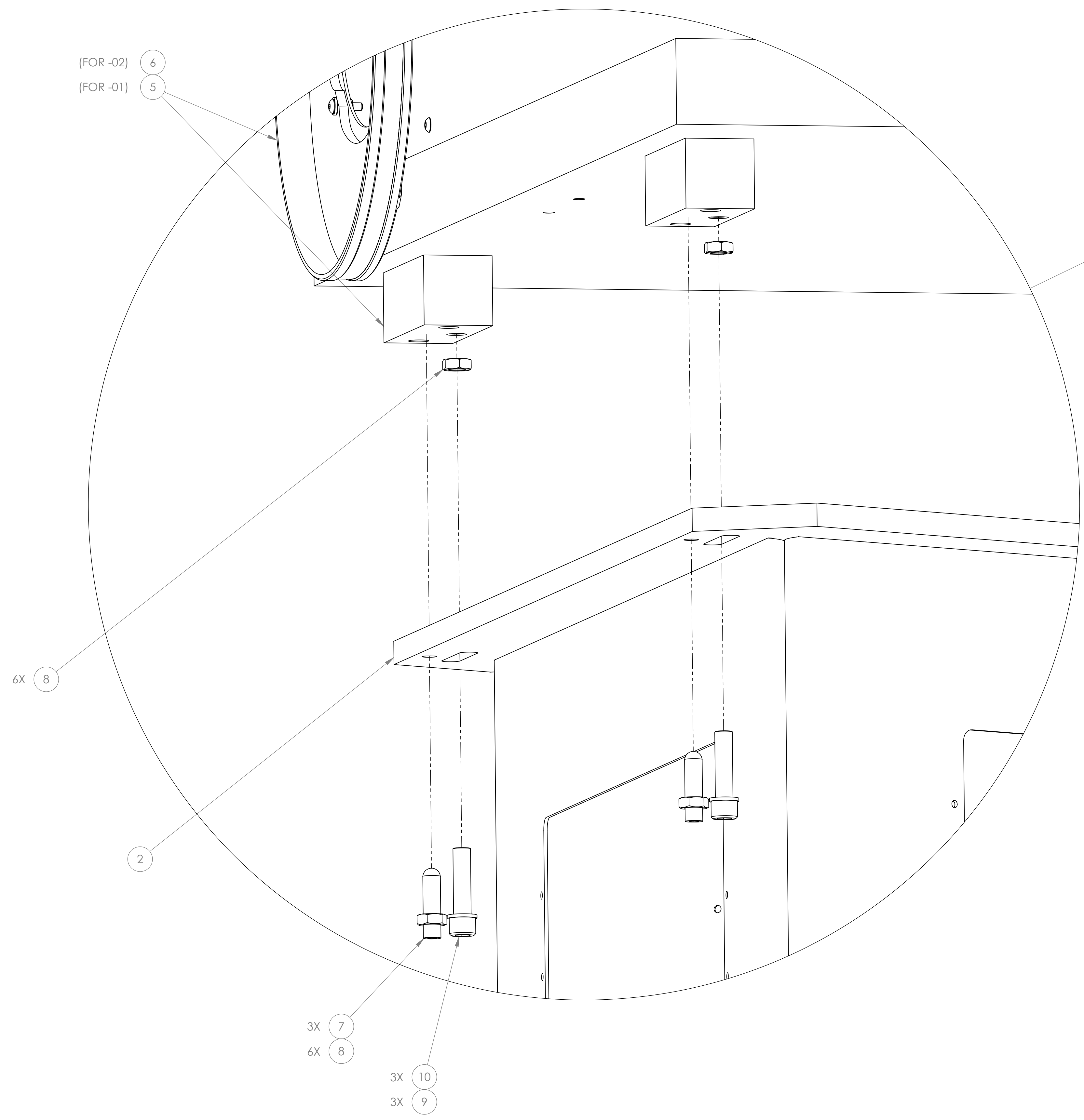
DIMENSIONS ARE IN INCHES TOLERANCES: .XX ± .XXX ± ANGULAR ± °		NOTES AND TOLERANCES: (UNLESS OTHERWISE SPECIFIED) 1. INTERPRET DRAWING PER ASME Y14.5-1994. 2. DO NOT SCALE FROM DRAWING.		LIGO CALIFORNIA INSTITUTE OF TECHNOLOGY MASSACHUSETTS INSTITUTE OF TECHNOLOGY		PART NAME ALIGO AOS PHOTCAL TX PIER ASSEMBLY	
MATERIAL		FINISH		SYSTEM		SUB-SYSTEM	
N/A		N/A μinch		ADVANCED LIGO		AOS	
				NEXT ASSY		DESIGNER	
				D0901467 D0901468		R. SAVAGE C. CONLEY	
						07 NOV 2012	
						SIZE	
						D	
						DWG. NO.	
						D1000676	
						REV.	
						v2	
						APPROVAL	
						SEE DCN	
						SCALE: NONE	
						PROJECTION:	
						SHEET 1 OF 4	

D1000676.dwg CALIGO AOS Photocal TX Pier Assembly - PART FDM REV: X-02 DRAWING PDM REV: X-008

8 7 6 5 4 3 2 1

H
G
F
E
D
C
B
A

H
G
F
E
D
C
B
A

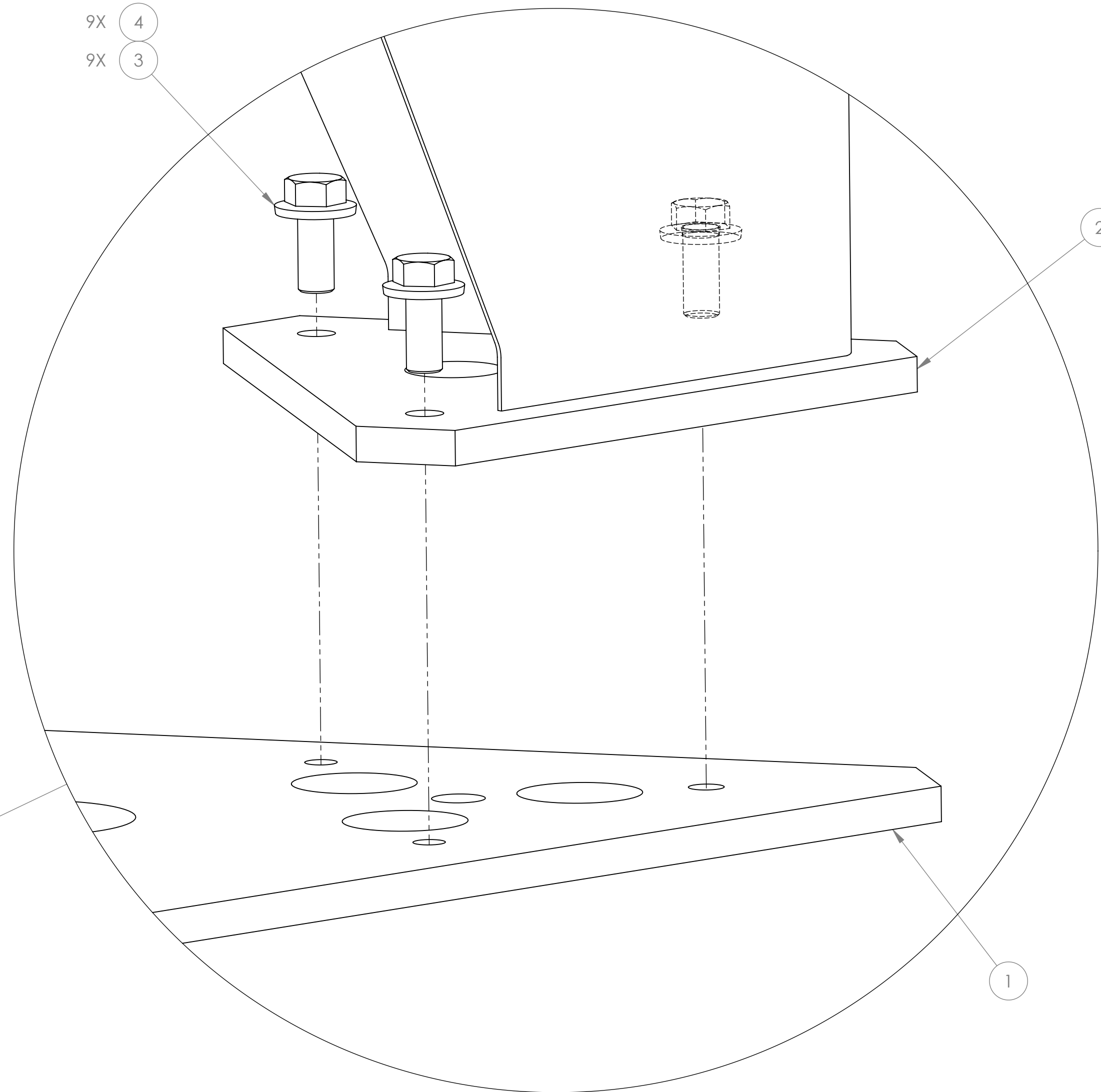
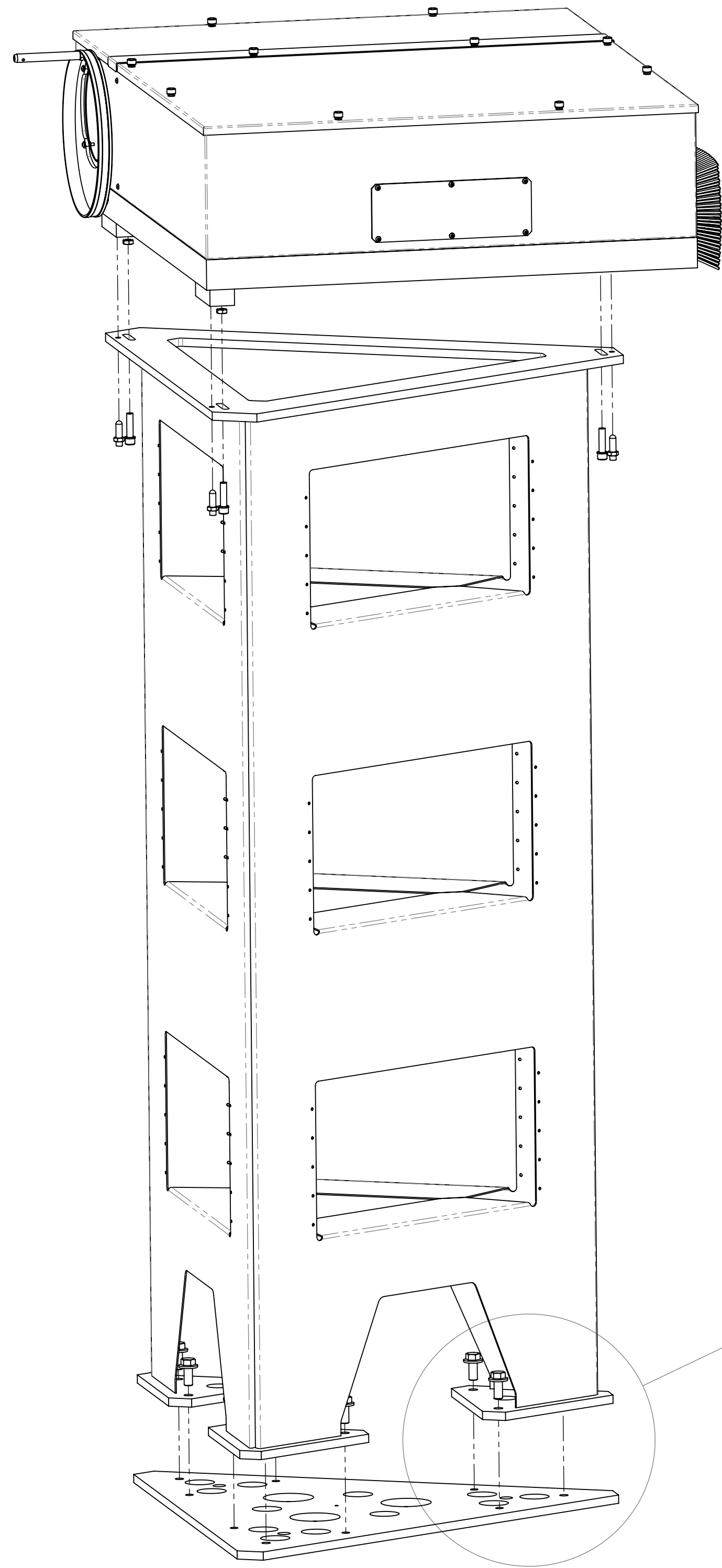


-01 SHOWN
(ETMX)

D1000676.dwg ACS Physical TX Per Assembly, PAR FDM REV: X-02, DRAWING PDM REV: X-03P

LIGO CALIFORNIA INSTITUTE OF TECHNOLOGY MASSACHUSETTS INSTITUTE OF TECHNOLOGY		REV.
SIZE DWG. NO.	D1000676	v2
SCALE: NONE	PROJECTION:	SHEET 2 OF 4

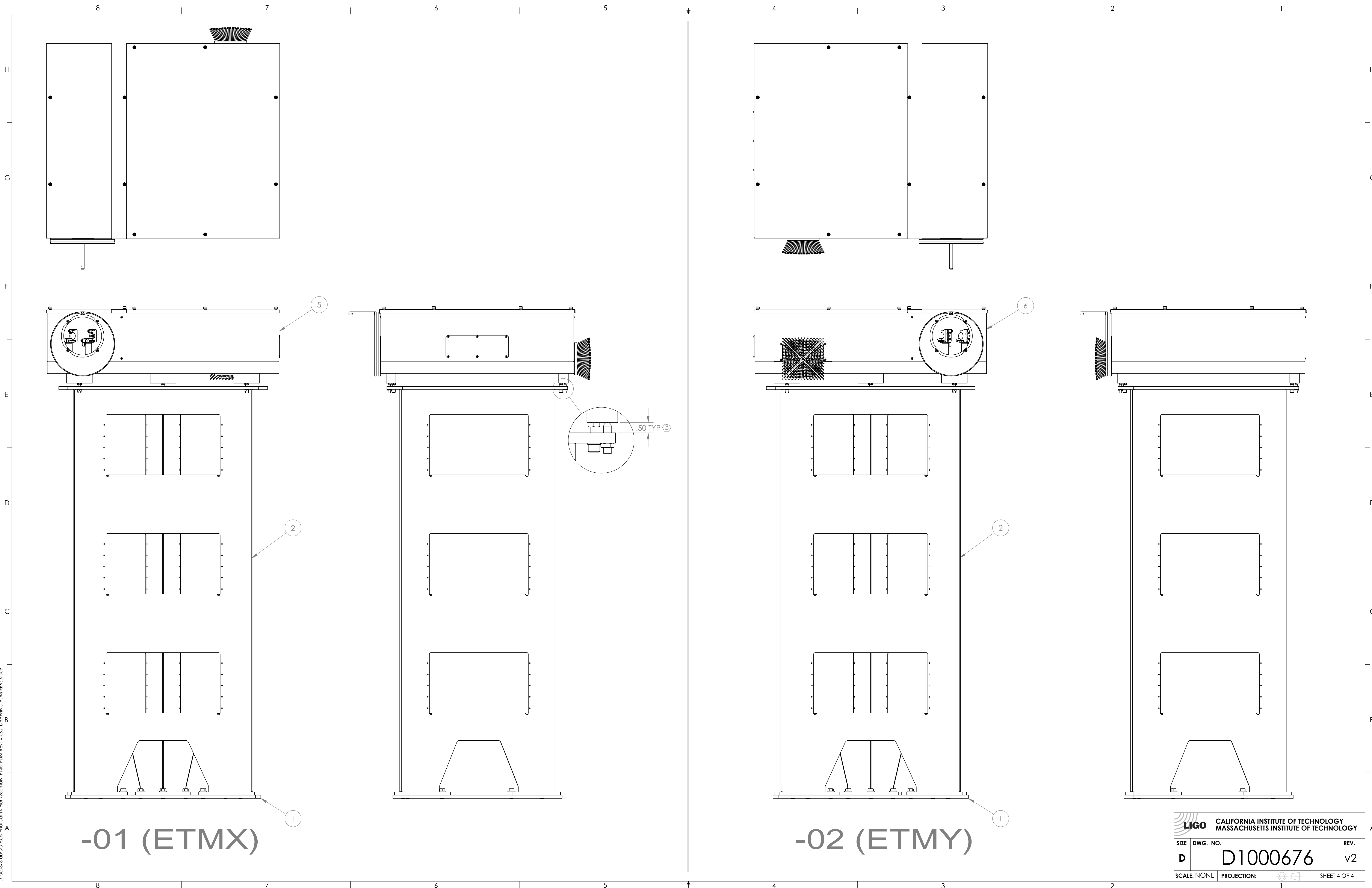
8 7 6 5 4 3 2 1



-01 SHOWN
(ETMX)

LIGO CALIFORNIA INSTITUTE OF TECHNOLOGY MASSACHUSETTS INSTITUTE OF TECHNOLOGY		REV.
SIZE	DWG. NO.	REV.
D	D1000676	v2
SCALE: NONE	PROJECTION:	SHEET 3 OF 4

D1000676.dwg LIGO ACS Phys/Cal TX Per Assembly, PAR FDM REV: X-02, DRAWING FDM REV: X-03P



-01 (ETMX)

-02 (ETMY)

LIGO CALIFORNIA INSTITUTE OF TECHNOLOGY MASSACHUSETTS INSTITUTE OF TECHNOLOGY		REV.
SIZE	DWG. NO.	REV.
D	D1000676	v2
SCALE: NONE	PROJECTION:	SHEET 4 OF 4

D1000676.dwg: AOS PhysCal TX Per Assembly; PAR FDM REV: X-02; DRAWING PDM REV: X-03P