

NOTES CONTINUED:

5 SERIAL NUMBERS START AT 001 FOR THE FIRST ARTICLE AND PROCEED CONSECUTIVELY. BAG AND TAG PARTS WITH THEIR DRAWING NUMBER, REVISION, TYPE OR CONFIGURATION (IF APPLICABLE), AND QUANTITY (SN).

6 GEOMETRIC TOLERANCES SHALL APPLY TO THE REPEATED HEXAGONAL HOLE PATTERN OF DETAIL A TO THE EXTENTS, AT A MINIMUM, OF THE INTERIOR REFERENCE AREA .46 X .46 [11.8 X 11.8]

TYPE (CONFIGURATION)	MATERIAL THICKNESS
-01	.005 [0.127]
-02	.002 [0.050]

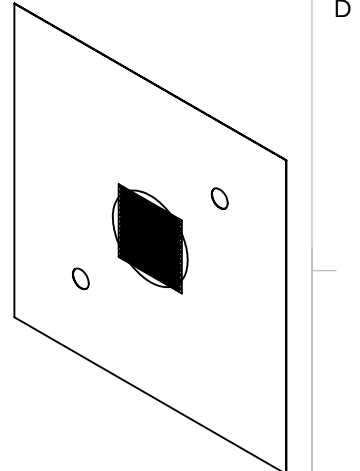
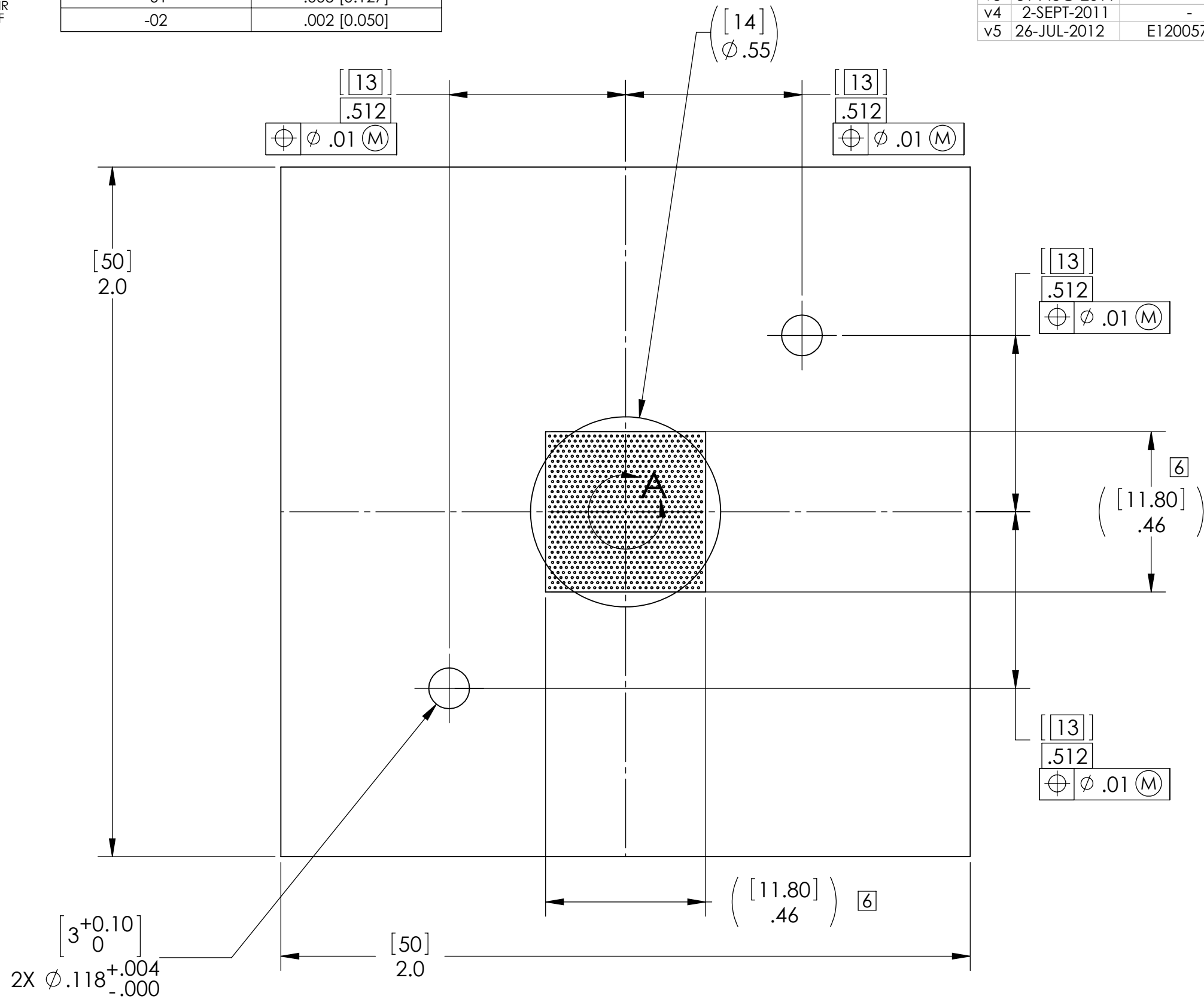
REV.	DATE	DCN #	DRAWING TREE #
v2	28-FEB-2011	E1100147-v1	E1100148-v1
v3	31-AUG-2011	-	-
v4	2-SEPT-2011	-	-
v5	26-JUL-2012	E1200579-v1	E1200580-v1

D

C

B

A



D

C

B

A

D1000669\_TCS HARTMANN SENSOR PLATE, PART PDM REV: X-026, DRAWING PDM REV: X-018

DETAIL A  
SCALE 6 : 1

NOTES AND TOLERANCES: (UNLESS OTHERWISE SPECIFIED)

DIMENSIONS ARE IN INCHES [MM]

TOLERANCES:  
.XX ± .01  
.XXX ± .001  
ANGULAR ± 0.1°

1. INTERPRET DRAWING PER ASME Y14.5-1994.  
2. NO RAISED EDGES OR BURRS.  
3. DO NOT SCALE FROM DRAWING.  
4. ALL MACHINING FLUIDS MUST BE FULLY SYNTHETIC, FULLY WATER SOLUBLE AND FREE OF SULFUR, SILICONE, AND CHLORINE.

MATERIAL: INVAR 36  
FINISH: 32 μinch

**LIGO** CALIFORNIA INSTITUTE OF TECHNOLOGY  
MASSACHUSETTS INSTITUTE OF TECHNOLOGY

SYSTEM: ADVANCED LIGO  
SUB-SYSTEM: AOS

NEXT ASSY: D1000657

PART NAME: HARTMANN SENSOR PLATE

DESIGNER	ADELAIDE	04-JAN-2010	SIZE	DWG. NO.	REV.
DRAFTER	M. JACOBSON	13-APR-2010	B	D1000669	v5
CHECKER	P. VEITCH	26-JUL-2012	SCALE:	2:1	PROJECTION:
APPROVAL	A. BROOKS	26-JUL-2012	SHEET 1 OF 1		

8

7

6

5

4

3

2

1