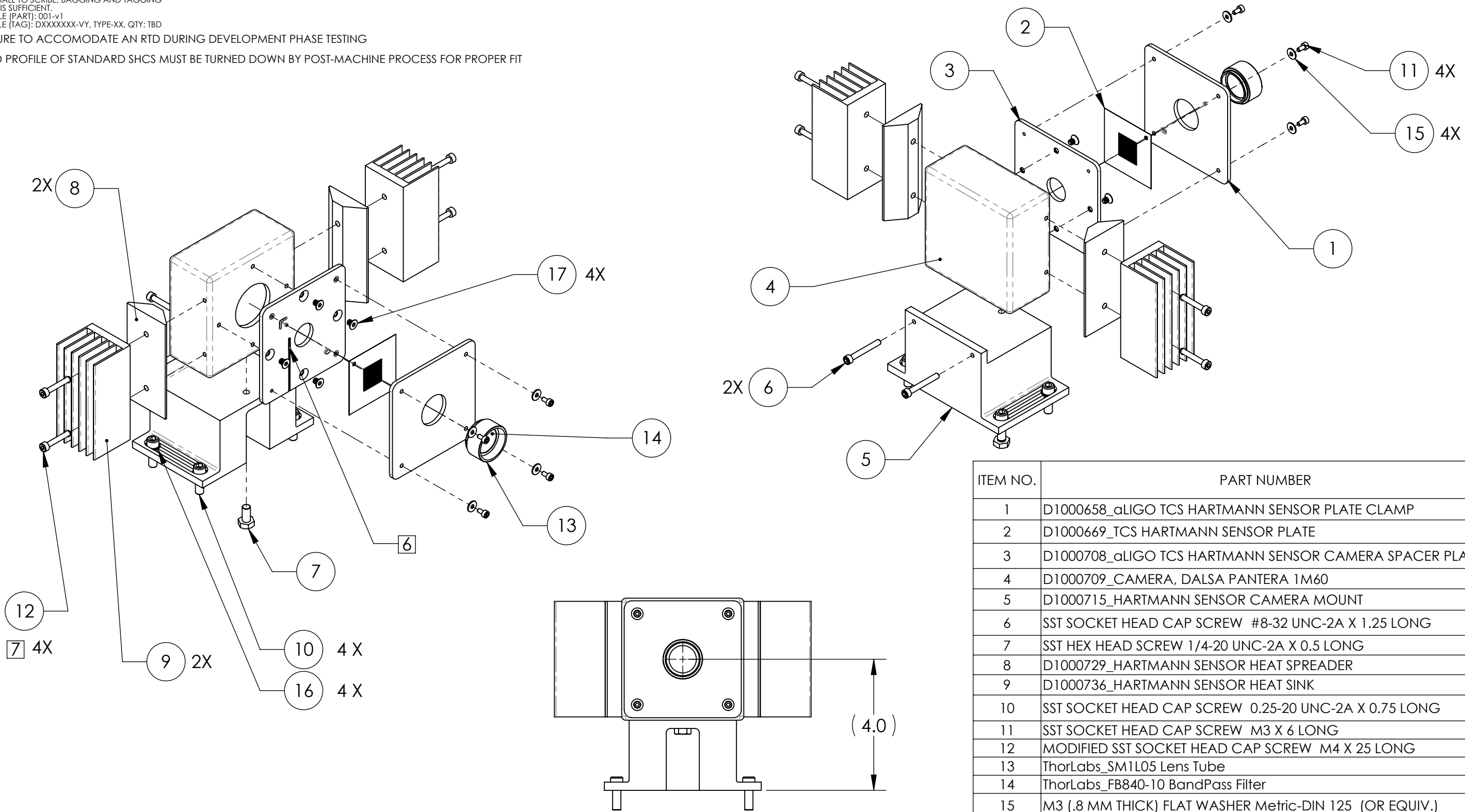


NOTES CONTINUED:
 5 SCRIBE, ENGRAVE, LASER MARK OR MECHANICALLY STAMP (NO DYES OR INKS) A UNIQUE THREE DIGIT SERIAL NUMBER & REVISION NUMBER ON EACH PART. SERIAL NUMBERS START AT 001 FOR THE FIRST ARTICLE AND PROCEED CONSECUTIVELY. BAG AND TAG PARTS WITH THEIR DRAWING PART NUMBER, REVISION, VARIANT OR "TYPE" (IF APPLICABLE), AND QUANTITY. IF PARTS ARE TOO SMALL TO SCRIBE, BAGGING AND TAGGING ALONE IS SUFFICIENT.
 EXAMPLE (PART): 001-v1
 EXAMPLE (TAG): DXXXXXX-VY, TYPE-XX, QTY: TBD

- 6 FEATURE TO ACCOMODATE AN RTD DURING DEVELOPMENT PHASE TESTING
- 7 HEAD PROFILE OF STANDARD SHCS MUST BE TURNED DOWN BY POST-MACHINE PROCESS FOR PROPER FIT

REV.	DATE	DCN #	DRAWING TREE #
v2	28-FEB-2011	E1100147-v1	E1100148-v1
v3	31-MAY-2011	E1100490-v1	E1100148-v2
-	-	-	-

D1000657_HARTMANN SENSOR, PART PDM REV: X-055, DRAWING PDM REV: X-011



ITEM NO.	PART NUMBER	QTY.
1	D1000658_aLIGO TCS HARTMANN SENSOR PLATE CLAMP	1
2	D1000669_TCS HARTMANN SENSOR PLATE	1
3	D1000708_aLIGO TCS HARTMANN SENSOR CAMERA SPACER PLATE	1
4	D1000709_CAMERA, DALSA PANTERA 1M60	1
5	D1000715_HARTMANN SENSOR CAMERA MOUNT	1
6	SST SOCKET HEAD CAP SCREW #8-32 UNC-2A X 1.25 LONG	2
7	SST HEX HEAD SCREW 1/4-20 UNC-2A X 0.5 LONG	1
8	D1000729_HARTMANN SENSOR HEAT SPREADER	2
9	D1000736_HARTMANN SENSOR HEAT SINK	2
10	SST SOCKET HEAD CAP SCREW 0.25-20 UNC-2A X 0.75 LONG	4
11	SST SOCKET HEAD CAP SCREW M3 X 6 LONG	4
12	MODIFIED SST SOCKET HEAD CAP SCREW M4 X 25 LONG	4
13	ThorLabs_SM1L05 Lens Tube	1
14	ThorLabs_FB840-10 BandPass Filter	1
15	M3 (.8 MM THICK) FLAT WASHER Metric-DIN 125 (OR EQUIV.)	4
16	0.25in, MS 15795-854 FLAT WASHERS (OR EQUIV.)	4
17	FHSCS M4 X 6 MM LONG, McMASTER 92125A186	4

NOTES AND TOLERANCES: (UNLESS OTHERWISE SPECIFIED)
 1. INTERPRET DRAWING PER ASME Y14.5-1994.
 2. REMOVE ALL SHARP EDGES, R.02 MIN.
 3. DO NOT SCALE FROM DRAWING.
 4. ALL MACHINING FLUIDS MUST BE FULLY SYNTHETIC, FULLY WATER SOLUBLE AND FREE OF SULFUR, SILICONE, AND CHLORINE.

DIMENSIONS ARE IN INCHES [MM]
 TOLERANCES:
 .XX ± .05
 .XXX ± .002
 ANGULAR ± 0.1°

MATERIAL N/A FINISH N/A μinch

LIGO CALIFORNIA INSTITUTE OF TECHNOLOGY MASSACHUSETTS INSTITUTE OF TECHNOLOGY

SYSTEM ADVANCED LIGO SUB-SYSTEM AOS NEXT ASSY D1000635, D1000636

PART NAME HARTMANN SENSOR, ASSEMBLY

DESIGNER	ADELAIDE	04-JAN-2010	SIZE	DWG. NO.	REV.
DRAFTER	M. JACOBSON	24 MAR 2010	B	D1000657	v3
CHECKER	B. ANDERSON	28 FEB 2011	SCALE:	1:2	PROJECTION:
APPROVAL	A. BROOKS	14 MAY 2010	SHEET	1 OF 1	