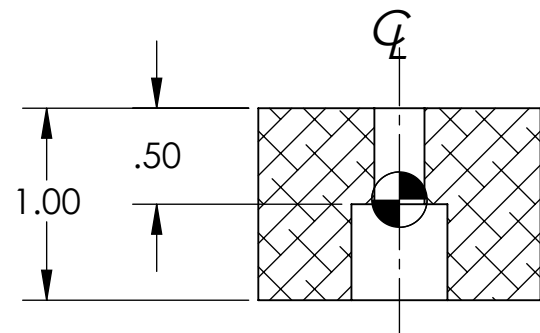
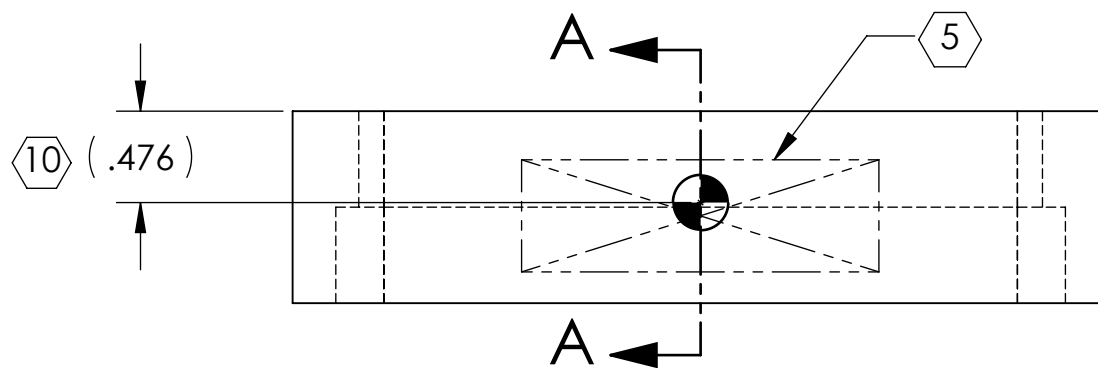
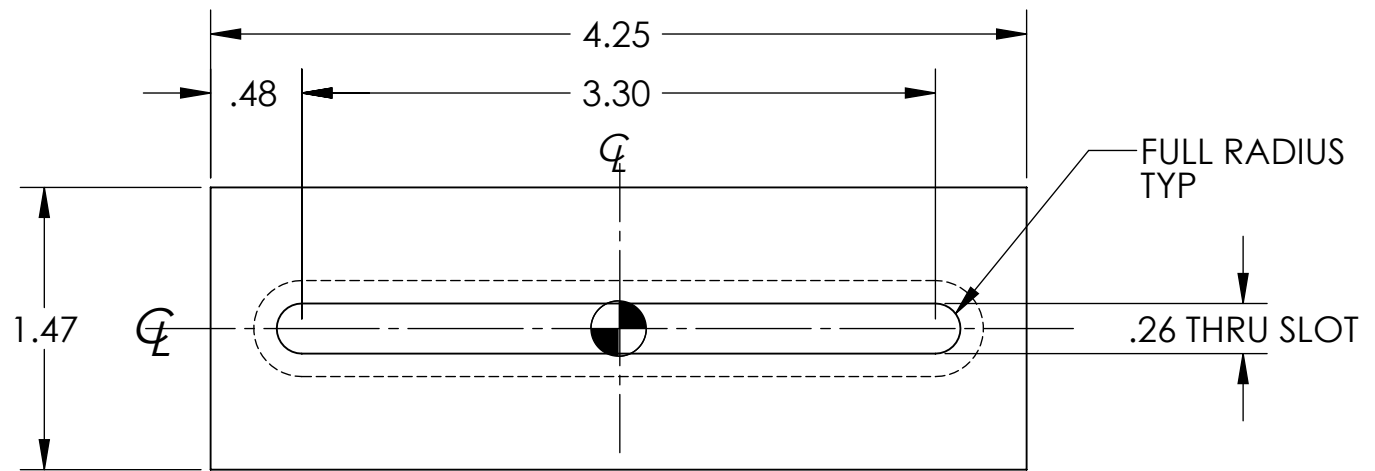
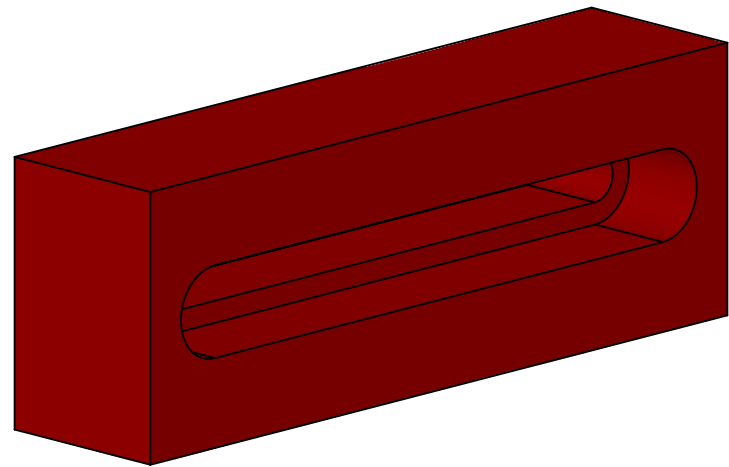


D1000655 aLIGO TOP MASS TOP SLOTTED BAR, PART PDM REV: X-037, DRAWING PDM REV: X-013

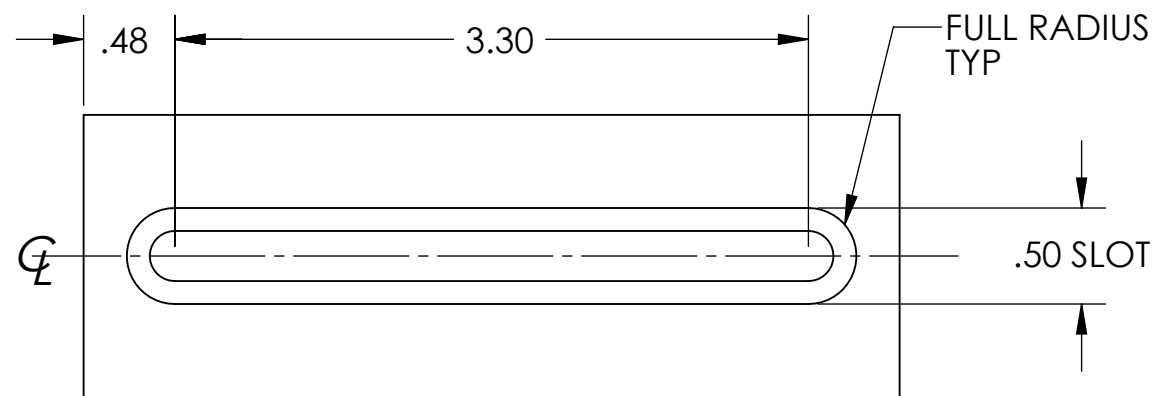
8 7 6 5 4 3 2 1

- NOTES CONTINUED:**
- 5. SCRIBE, ENGRAVE (A VIBRATORY TOOL MAY BE USED), LASER MARK OR MECHANICALLY STAMP (NO INKS OR DYES) DRAWING PART NUMBER AND REVISION ON NOTED SURFACE OF PART FOLLOWED WITH A THREE DIGIT SERIAL NUMBER. SERIAL NUMBERS START AT 001 FOR THE FIRST ARTICLE AND PROCEED CONSECUTIVELY. USE MINIMUM 0.06" HIGH CHARACTERS. EXAMPLE: DXXXXXX-VY, S/N XXX
  - 6. MASS: 1.407 LB [.638 KG].
  - 7. MACHINE ALL SURFACES TO REMOVE OXIDES AND MILL FINISH. USE OF ABRASIVE REMOVAL TECHNIQUES IS NOT ALLOWED. REFER TO LIGO-E0900364.
  - 8. ALL PARTS SHALL BE MANUFACTURED IN ACCORDANCE WITH LIGO SPECIFICATION E0900364.
  - 9. ALL MATERIAL IS TO BE VIRGIN MATERIAL (i.e. NO WELD REPAIRS, PLUGS OR RECYCLED MATERIAL). NO REPAIRS SHALL BE MADE UNLESS APPROVED IN ADVANCE, AND IN WRITING, BY LIGO LABORATORY. REFER TO LIGO-E0900364.
  - 10. CENTER OF GRAVITY (CG) DIMENSIONS SHOWN FOR INTERNAL REFERENCE ONLY.

REV.	DATE	DCN #	DRAWING TREE #
v1	JUN-29-2010	E1000234	
v2	10 AUG 2011	E1100351	



SECTION A-A



NOTES AND TOLERANCES: (UNLESS OTHERWISE SPECIFIED)				LIGO CALIFORNIA INSTITUTE OF TECHNOLOGY MASSACHUSETTS INSTITUTE OF TECHNOLOGY		PART NAME	
DIMENSIONS ARE IN INCHES TOLERANCES: .XX ± .010.01 .XXX ± .005.005 ANGULAR ± 1.05°				1. INTERPRET DRAWING PER ASME Y14.5-1994. 2. REMOVE ALL SHARP EDGES, R.02 MIN. 3. DO NOT SCALE FROM DRAWING. 4. ALL MACHINING FLUIDS MUST BE FULLY SYNTHETIC, FULLY WATER SOLUBLE AND FREE OF SULFUR, SILICONE, AND CHLORINE.		aLIGO TOP MASS SIDE SLOTTED BAR	
						MATERIAL 304 SSSL FINISH 63 μinch Ra	
SYSTEM aLIGO AOS SUB-SYSTEM AOS NEXT ASSY D1000444				DESIGNER K. MAILAND 19 MAR 2010 DRAFTER I ROMERO 4/14/10 CHECKER K MAILAND 4/14/10 APPROVAL K MAILAND 4/14/10		SIZE DWG. NO. B D1000655 REV. v2	
				SCALE: 1:1		PROJECTION:  SHEET 1 OF 1	

8 7 6 5 4 3 2 1