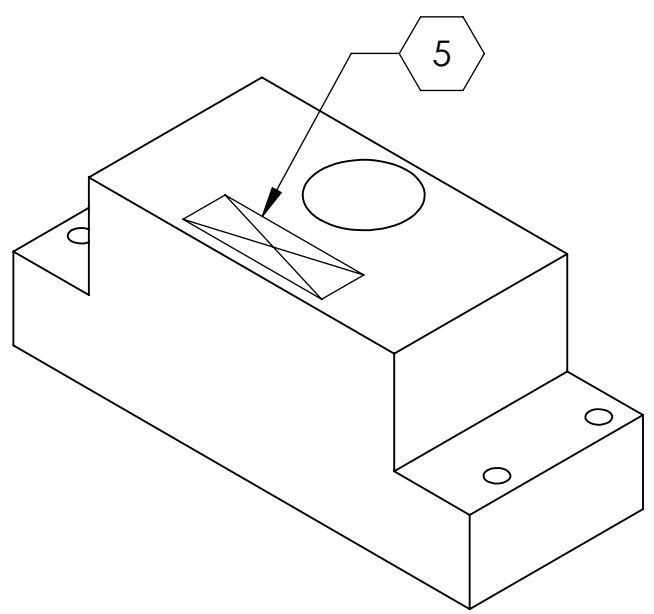


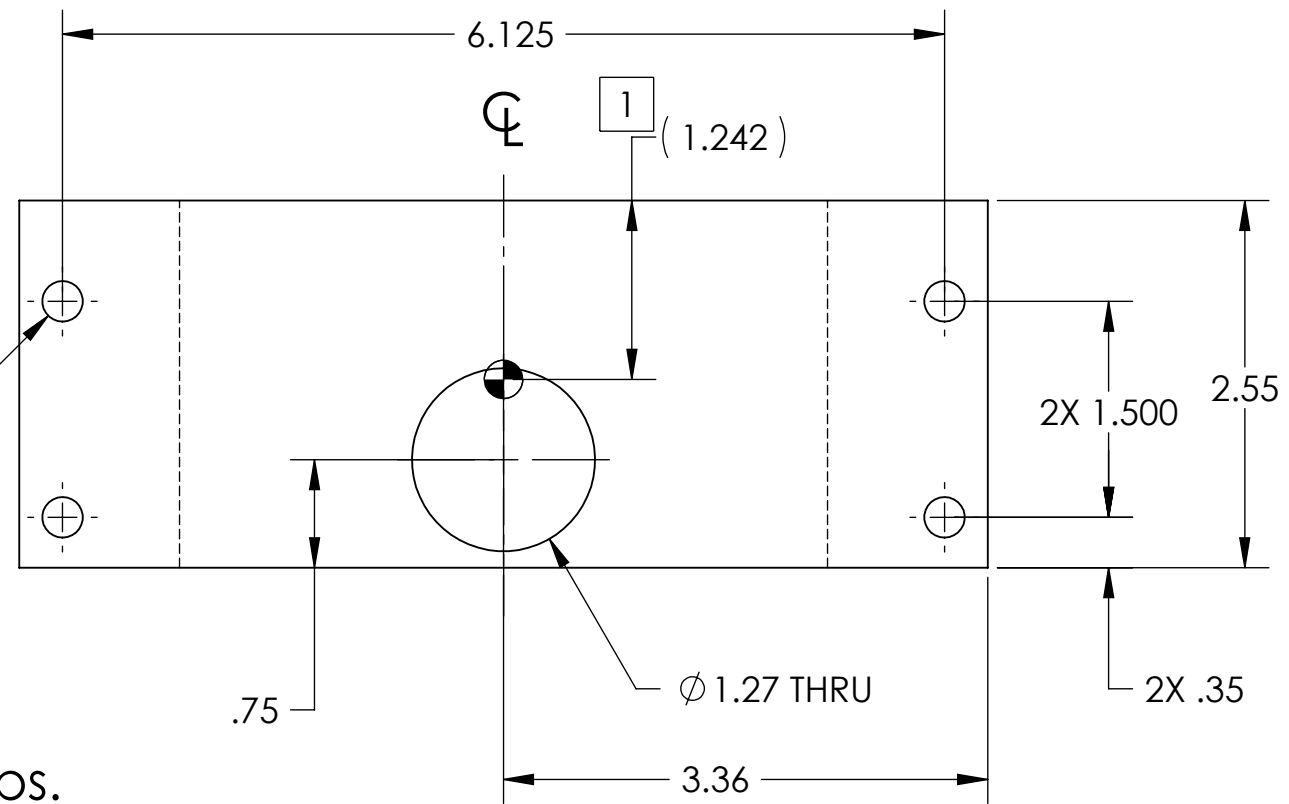
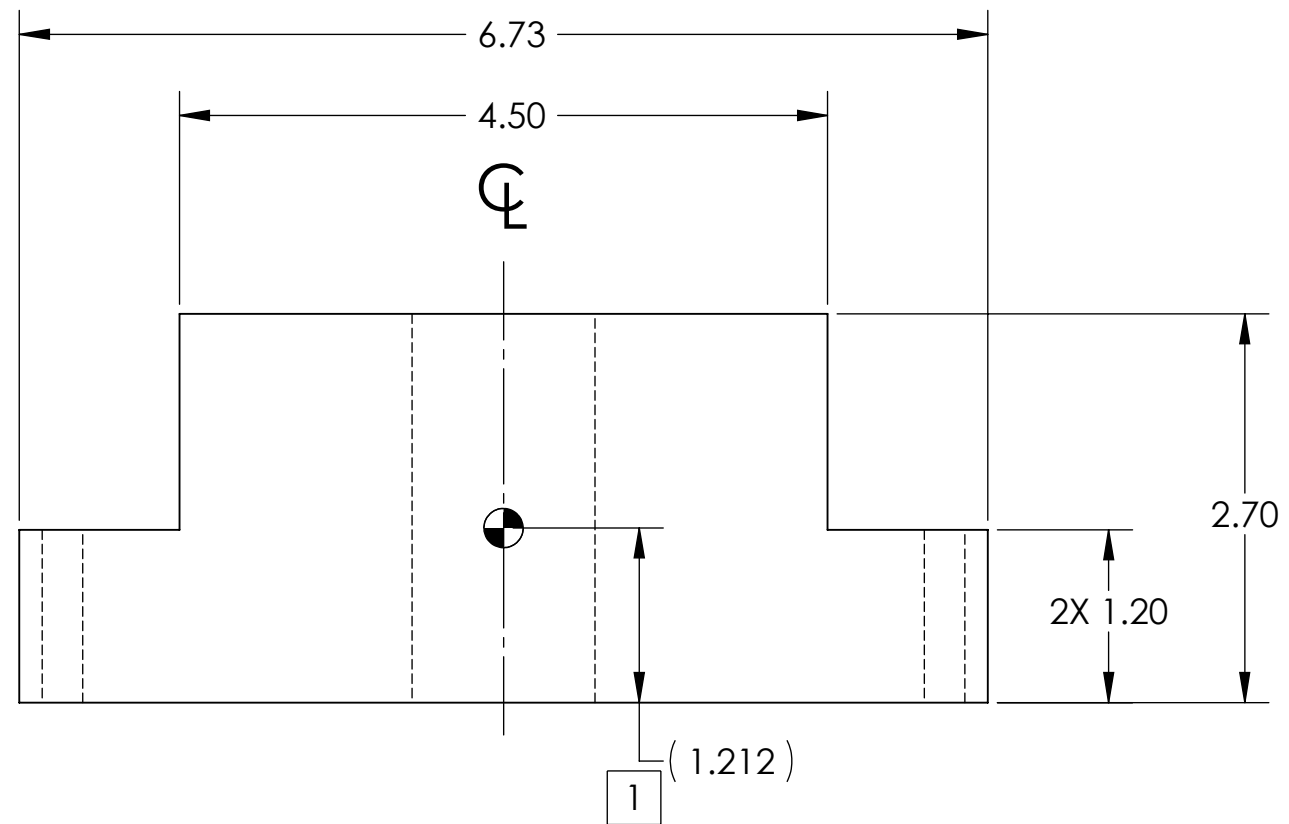
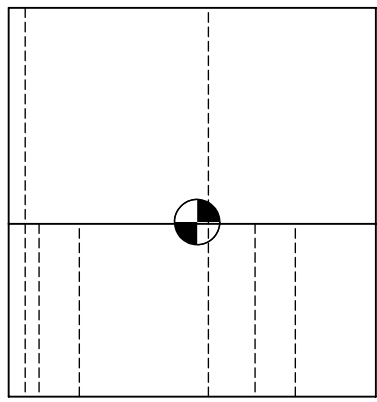
NOTES CONTINUED:
 5. SCRIBE, ENGRAVE, OR MECHANICALLY STAMP (NO INKS OR DYES) DRAWING PART NUMBER, REVISION (AND VARIANT OR "TYPE" IF APPLICABLE) ON NOTED SURFACE OF PART FOLLOWED ON THE NEXT LINE WITH A THREE DIGIT SERIAL NUMBER. SERIAL NUMBERS START AT 001 FOR THE FIRST ARTICLE AND PROCEED CONSECUTIVELY. USE MINIMUM 0.12" HIGH CHARACTERS, UNLESS THE SIZE OF THE PART DICTATES SMALLER CHARACTERS. A VIBRATORY TOOL MAY BE USED.
 EXAMPLE: DXXXXXX-VY, TYPE-XX, S/N XXX

REV.	DATE	DCN #	DRAWING TREE #
v1	JUN-29-2010	E1000234	

D
C
B
A



ISO VIEW



4X ϕ .281 THRU ALL

ϕ 1.27 THRU

NOTE: WEIGHT 9.846 lbs.

- MACHINE ALL SURFACES TO REMOVE OXIDES AND MILL FINISH, USE OF ABRASIVE TECHNIQUES IS NOT ALLOWED.
- DO NOT USE SANDPAPER, SCOTCH BRITE OR SIMILAR PRODUCTS.
- ALL PARTS SHALL BE MANUFACTURED IN ACCORDANCE WITH LIGO SPECIFICATION E0900364

1 CENTER OF GRIVITY (CG) DIMENSIONS SHOWN FOR INTERNAL REFERENCE ONLY

DIMENSIONS ARE IN INCHES	
TOLERANCES:	.XX \pm .01
	.XXX \pm .005
ANGULAR \pm 1°	

NOTES AND TOLERANCES: (UNLESS OTHERWISE SPECIFIED)	
1.	INTERPRET DRAWING PER ASME Y14.5-1994.
2.	REMOVE ALL SHARP EDGES, R.02 MIN.
3.	DO NOT SCALE FROM DRAWING.
4.	ALL MACHINING FLUIDS MUST BE FULLY SYNTHETIC, FULLY WATER SOLUBLE AND FREE OF SULFUR, SILICONE, AND CHLORINE.
MATERIAL	S. STL. 304
FINISH	32 μ inch

CALIFORNIA INSTITUTE OF TECHNOLOGY MASSACHUSETTS INSTITUTE OF TECHNOLOGY	PART NAME		aLIGO TOP ADD MASS TEE	
	SYSTEM aLIGO AOS	SUB-SYSTEM TRANSMON	DESIGNER I ROMERO	DATE 4/14/10
NEXT ASSY D1000444	CHECKER K MAILAND	DATE 4/14/10	SIZE DWG. NO. B D1000633	REV. v1
		APPROVAL K MAILAND	DATE 4/14/10	SCALE: 1:1 PROJECTION:

D1000633 aLIGO TOP ADD MASS TEE, PART PDM REV: X-001, DRAWING PDM REV: X-003