

REV.	DATE	DCN #	DRAWING TREE #

NOTES CONTINUED:
 ○ SCRIBE, ENGRAVE, OR MECHANICALLY STAMP TWO INKS OR DYES DRAWING PART NUMBER AND REVISION ON NOTED SURFACE FOLLOWED ON THE NEXT LINE BY A THREE DIGIT SERIAL NUMBER. SERIAL NUMBERS START AT 001 FOR THE FIRST ARTICLE AND PROCEED CONSECUTIVELY. USE OF HIGH CHARACTERS. EXAMPLE: DXXXXXXV; SIV001. A VIBRATORY TOOL MAY BE USED.

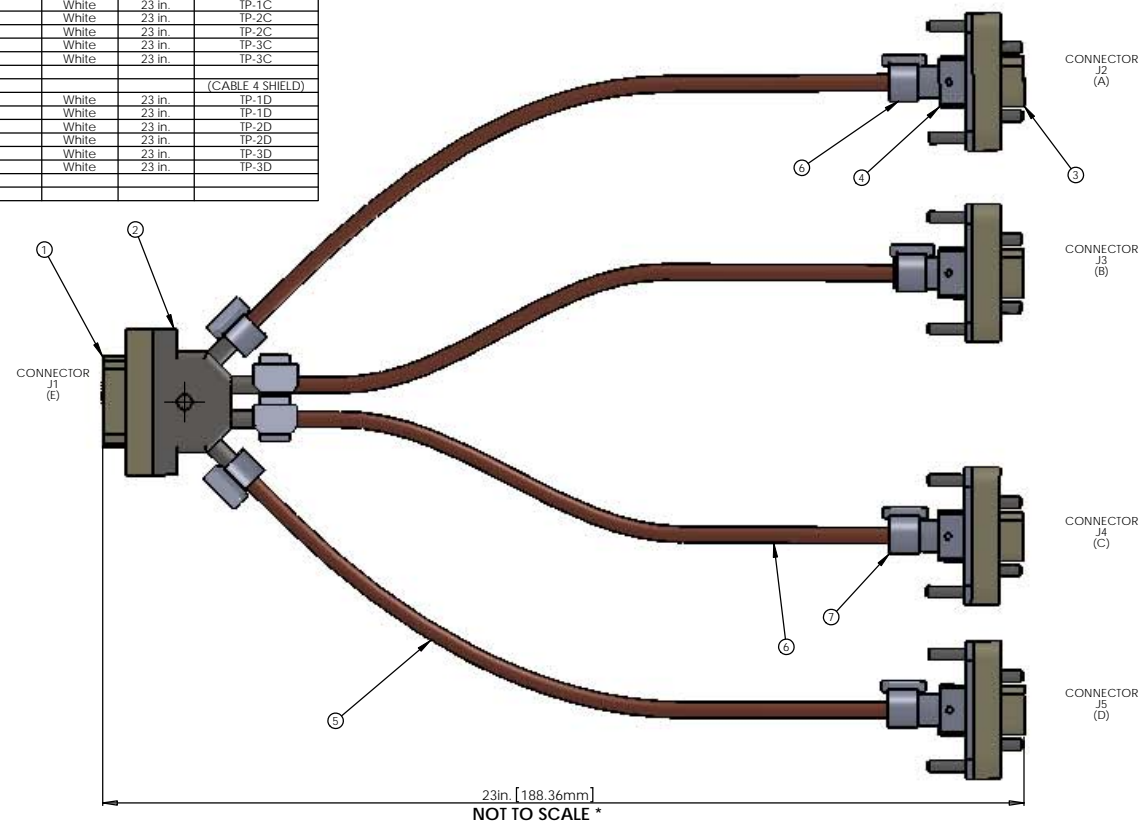
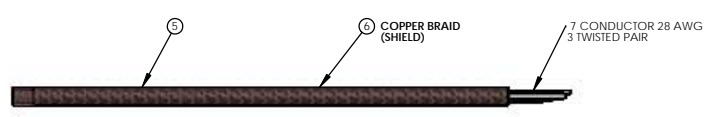
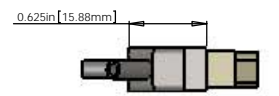
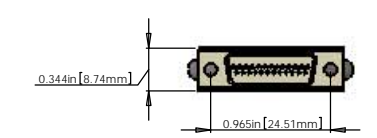
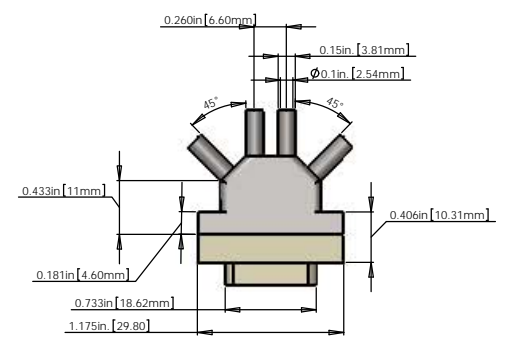
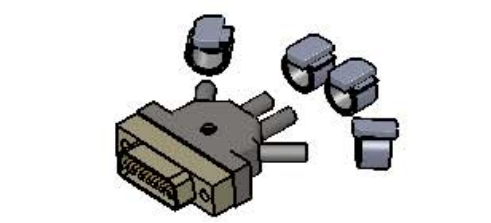
V25AM-23-B CABLE ASSEMBLY CIRCUIT SUMMARY

VμD25 M/1S-23-4_μD9 F/5S:B

FROM

CONNECTOR J1 - 25 PIN MALE MICRO_D CONNECTOR

PIN	WIRE NAME	COLOR	LENGTH	TWISTED PAIR
E1	(CONNECTOR SHELL)			(CABLE 1 SHIELD)
E1	(CABLE 1) WIRE 1	White	23 in	SINGLE WIRE
E14	(CABLE 1) WIRE 14	White	23 in	TP-1A
E2	(CABLE 1) WIRE 2	White	23 in	TP-1A
E15	(CABLE 1) WIRE 15	White	23 in	TP-2A
E3	(CABLE 1) WIRE 3	White	23 in	TP-2A
E16	(CABLE 1) WIRE 16	White	23 in	TP-3A
E4	(CABLE 1) WIRE 4	White	23 in	TP-3A
E1	(CABLE 2 SHIELD)			(CABLE 2 SHIELD)
E17	(CABLE 2) WIRE 17	White	23 in	TP-1B
E5	(CABLE 2) WIRE 5	White	23 in	TP-1B
E18	(CABLE 2) WIRE 18	White	23 in	TP-2B
E6	(CABLE 2) WIRE 6	White	23 in	TP-2B
E19	(CABLE 2) WIRE 19	White	23 in	TP-3B
E7	(CABLE 2) WIRE 7	White	23 in	TP-3B
E1	(CABLE 3 SHIELD)			(CABLE 3 SHIELD)
E20	(CABLE 3) WIRE 20	White	23 in	TP-1C
E8	(CABLE 3) WIRE 8	White	23 in	TP-1C
E21	(CABLE 3) WIRE 21	White	23 in	TP-2C
E9	(CABLE 3) WIRE 9	White	23 in	TP-2C
E22	(CABLE 3) WIRE 22	White	23 in	TP-3C
E10	(CABLE 3) WIRE 10	White	23 in	TP-3C
E1	(CABLE 4 SHIELD)			(CABLE 4 SHIELD)
E23	(CABLE 4) WIRE 23	White	23 in	TP-1D
E11	(CABLE 4) WIRE 11	White	23 in	TP-1D
E24	(CABLE 4) WIRE 24	White	23 in	TP-2D
E12	(CABLE 4) WIRE 12	White	23 in	TP-2D
E25	(CABLE 4) WIRE 25	White	23 in	TP-3D
E13	(CABLE 4) WIRE 13	White	23 in	TP-3D



V25AM-23-B CABLE ASSEMBLY CIRCUIT SUMMARY

TO

CONNECTOR J2 - 9 PIN FEMALE MICRO_D CONNECTOR (PEEK)

PIN	WIRE NAME	SIGNAL
A5	(CONNECTOR SHELL)	SHIELD
A5	(CABLE 1) SHIELD	SHIELD
A5	(CABLE 1) WIRE 14	PD1-K
A6	(CABLE 1) WIRE 2	PD1-A
A2	(CABLE 1) WIRE 15	LED1-A
A7	(CABLE 1) WIRE 3	LED1-K
A4	(CABLE 1) WIRE 16	COIL1-FN
A9	(CABLE 1) WIRE 4	COIL1-ST

V25AM-23-B CABLE ASSEMBLY CIRCUIT SUMMARY

TO

CONNECTOR J3 - 9 PIN FEMALE MICRO_D CONNECTOR (PEEK)

PIN	WIRE NAME	SIGNAL
B5	(CONNECTOR SHELL)	SHIELD
B5	(CABLE 2) SHIELD	SHIELD
B5	(CABLE 2) WIRE 1	SHIELD
B1	(CABLE 2) WIRE 17	PD2-K
B6	(CABLE 2) WIRE 5	PD2-A
B2	(CABLE 2) WIRE 18	LED2-A
B7	(CABLE 2) WIRE 6	LED2-K
B4	(CABLE 2) WIRE 19	COIL2-FN
B9	(CABLE 2) WIRE 7	COIL2-ST

V25AM-23-B CABLE ASSEMBLY CIRCUIT SUMMARY

TO

CONNECTOR J4 - 9 PIN FEMALE MICRO_D CONNECTOR (PEEK)

PIN	WIRE NAME	SIGNAL
C5	(CONNECTOR SHELL)	SHIELD
C5	(CABLE 3) SHIELD	SHIELD
C5	(CABLE 3) WIRE 1	SHIELD
C1	(CABLE 3) WIRE 20	PD3-K
C6	(CABLE 3) WIRE 8	PD3-A
C2	(CABLE 3) WIRE 21	LED3-A
C7	(CABLE 3) WIRE 9	LED3-K
C4	(CABLE 3) WIRE 22	COIL3-FN
C9	(CABLE 3) WIRE 10	COIL3-ST

V25AM-23-B CABLE ASSEMBLY CIRCUIT SUMMARY

TO

CONNECTOR J5 - 9 PIN FEMALE MICRO_D CONNECTOR (PEEK)

PIN	WIRE NAME	SIGNAL
D5	(CONNECTOR SHELL)	SHIELD
D5	(CABLE 4) SHIELD	SHIELD
D5	(CABLE 4) WIRE 1	SHIELD
D1	(CABLE 4) WIRE 23	PD4-K
D6	(CABLE 4) WIRE 11	PD4-A
D2	(CABLE 4) WIRE 24	LED4-A
D7	(CABLE 4) WIRE 12	LED4-K
D4	(CABLE 4) WIRE 25	COIL4-FN
D9	(CABLE 4) WIRE 13	COIL4-ST

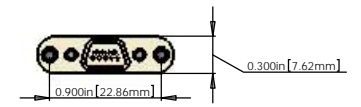
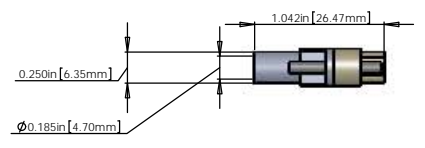
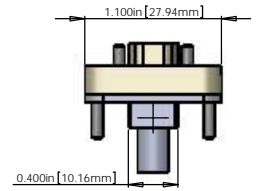
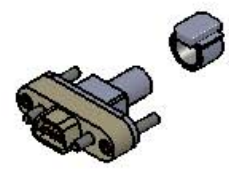
BILL OF MATERIALS

ITEM NO.	PART NUMBER	DESCRIPTION	QTY.	LENGTH
①	GLENAIR #DCDM25P-S-MC225-240	MicroD25 MALE CONNECTOR (J1) FOR UHV	1	
②	ITICOR # 040-1243-0025	MicroD25 CONNECTOR BACKSHELL FOR UHV (STAINLESS)	1	
③	ITICOR # TS0094 WITH 60in. FLYING LEADS WITH BACKSHELL	MicroD9 FEMALE CONNECTOR (J2, J3, J4, J5) FOR UHV (PEEK)	4	
④		MicroD9 CONNECTOR BACKSHELL FOR UHV (STAINLESS)	4	
⑤	C1	7 COND. (3 TWISTED PAIR) CABLE (ADD COPPER BRAID (SHIELD) ⑥)	4	23in.*
⑥	COPPER BRAID	CONTINENTAL CORDAGE PART #2483x40BC	4	23in.*
⑦	GLENAIR 600-052	GLENAIR 600-052 STANDARD BRAID CLAMP	8	

* NOTE: THE OVERALL LENGTH IS MEASURED FROM PIN TIP (25 PIN) TO PIN TIP (9 PIN) OF THE CABLE. Use whatever length is necessary for the internal wiring of the connectors and strip length to achieve the correct overall length.

NOTES: (UNLESS OTHERWISE SPECIFIED)

- MATERIAL: a. CONNECTOR SHELL - PEEK.
 b. BACKSHELL - STAINLESS STEEL WITH VENT HOLE.
 c. CONTACTS - BERYLLIUM COPPER ALLOW C17300 0.00050 MIN. GOLD OVER NICKEL.
 d. HARDWARE: CORROSION RESISTANCE STEEL, PASSIVATED
 e. PEEK BRAID - PEEK CARBON FIBRE LOADED
- CABLE 7 COND. 28 AWG. (40 STRD 44 AWG) WITH 2 LAYERS OF KAPTON TAPE 3 TWISTED PAIRS (4 TO 5 TWISTS PER INCH) OVERALL 40AWG COPPER BRAID 80% COVERAGE OVERALL PEEK BRAID MIN. 50% COVERAGE OVERALL CABLE O.D. WILL BE APPROX. 0.240 in.



STANDARD USE FOR THIS CABLE

SUBSYSTEM	STANDARD USE
SUS	QUAD SUSPENSIONS UIM

NOTES AND TOLERANCES: (UNLESS OTHERWISE SPECIFIED)

- INTERPRET DRAWING PER ASME Y14.5-1994.
- REMOVE ALL SHARP EDGES: R.02 MIN.
- DO NOT SCALE FROM DRAWING.
- ALL MACHINING FLUIDS MUST BE FULLY SYNTHETIC, FULLY WATER SOLUBLE AND FREE OF SULFUR, SILICONE, AND CHLORINE.

DIMENSIONS ARE IN: TOLERANCES: .XX ±, .XXX ±, ANGULAR ± °

DESIGNER	DATE	DCN	DWG. NO.	REV.
E880281	10/01/00		D1000563-v2	E
CHECKER	DATE	DCN	DWG. NO.	REV.
APPROVAL	DATE	DCN	DWG. NO.	REV.

SCALE: 2:1 PROJECTION: SHEET 1 OF 1

DRAWING: V25AM-23-B PART: DRAWING: DRAWING FOR REV