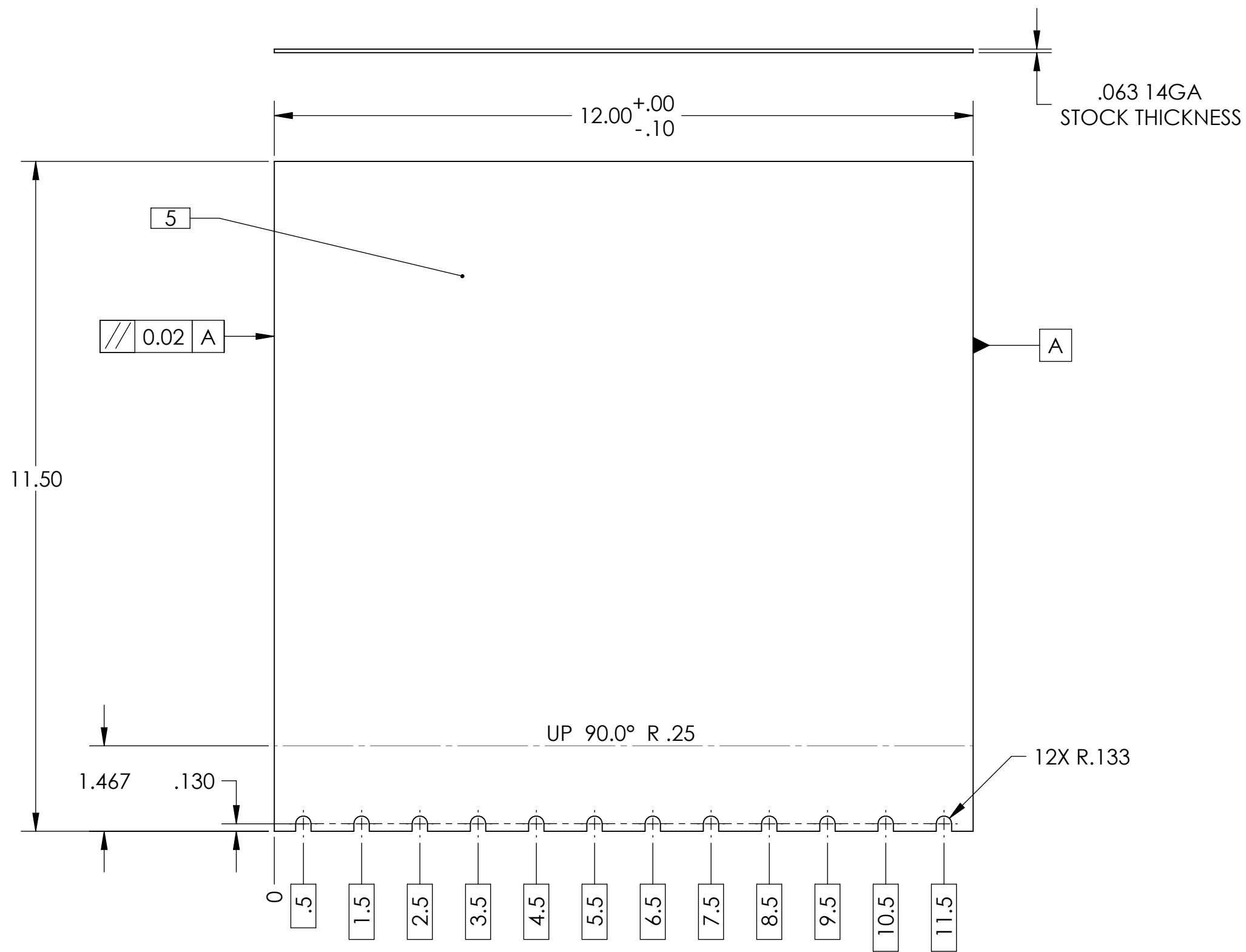


D1000516\_TCS LASER ENCLOSURE, BREADBOARD INTERIOR 12 IN PANEL, PART PDM REV: X-005, DRAWING PDM REV: X-006

- NOTES CONTINUED:**
- 5. WITH GLASS BEADS, BLAST NEAR SURFACE, CONTAINING THE FOLD LINES, TO ACHIEVE ABRADED FINISH
  - 6. BLACK ANODIZE ALL SURFACES PER MIL-A-8625, TYPE II OR III, CLASS 2 2 MIL MAXIMUM THICKNESS

REV.	DATE	DCN #	DRAWING TREE #
-	-	-	-
-	-	-	-
-	-	-	-



CONFIGURATION -01	FLAT PATTERN (SHEET 1)
CONFIGURATION -02	USE CASE (SHEET 2)

**NOTES AND TOLERANCES: (UNLESS OTHERWISE SPECIFIED)**

DIMENSIONS ARE IN INCHES  
 TOLERANCES:  
 .XX ± .01  
 .XXX ± .005  
 ANGULAR ± 0.2°

1. INTERPRET DRAWING PER ASME Y14.5-1994.  
 2. REMOVE ALL SHARP EDGES, R.02 MIN.  
 3. DO NOT SCALE FROM DRAWING.  
 4. ALL MACHINING FLUIDS MUST BE FULLY SYNTHETIC, FULLY WATER SOLUBLE AND FREE OF SULFUR, SILICONE, AND CHLORINE.

**MATERIAL** 5052-O **FINISH** 125 μinch

	CALIFORNIA INSTITUTE OF TECHNOLOGY MASSACHUSETTS INSTITUTE OF TECHNOLOGY		<b>PART NAME</b> LASER ENCLOSURE, BREADBOARD INT 12 IN PANEL		
	<b>SYSTEM</b> ADVANCED LIGO	<b>SUB-SYSTEM</b> AOS	<b>DESIGNER</b> M. JACOBSON 08 MAR 2010	<b>SIZE DWG. NO.</b> B D1000516	<b>REV.</b> v1
<b>DRAFTER</b> M. JACOBSON 08 MAR 2010	<b>CHECKER</b> K. MAILAND 09 MAR 2010	<b>APPROVAL</b>	<b>SCALE:</b> 1:2	<b>PROJECTION:</b>	SHEET 1 OF 2

8 7 6 5 4 3 2 1

D

D

C

C

B

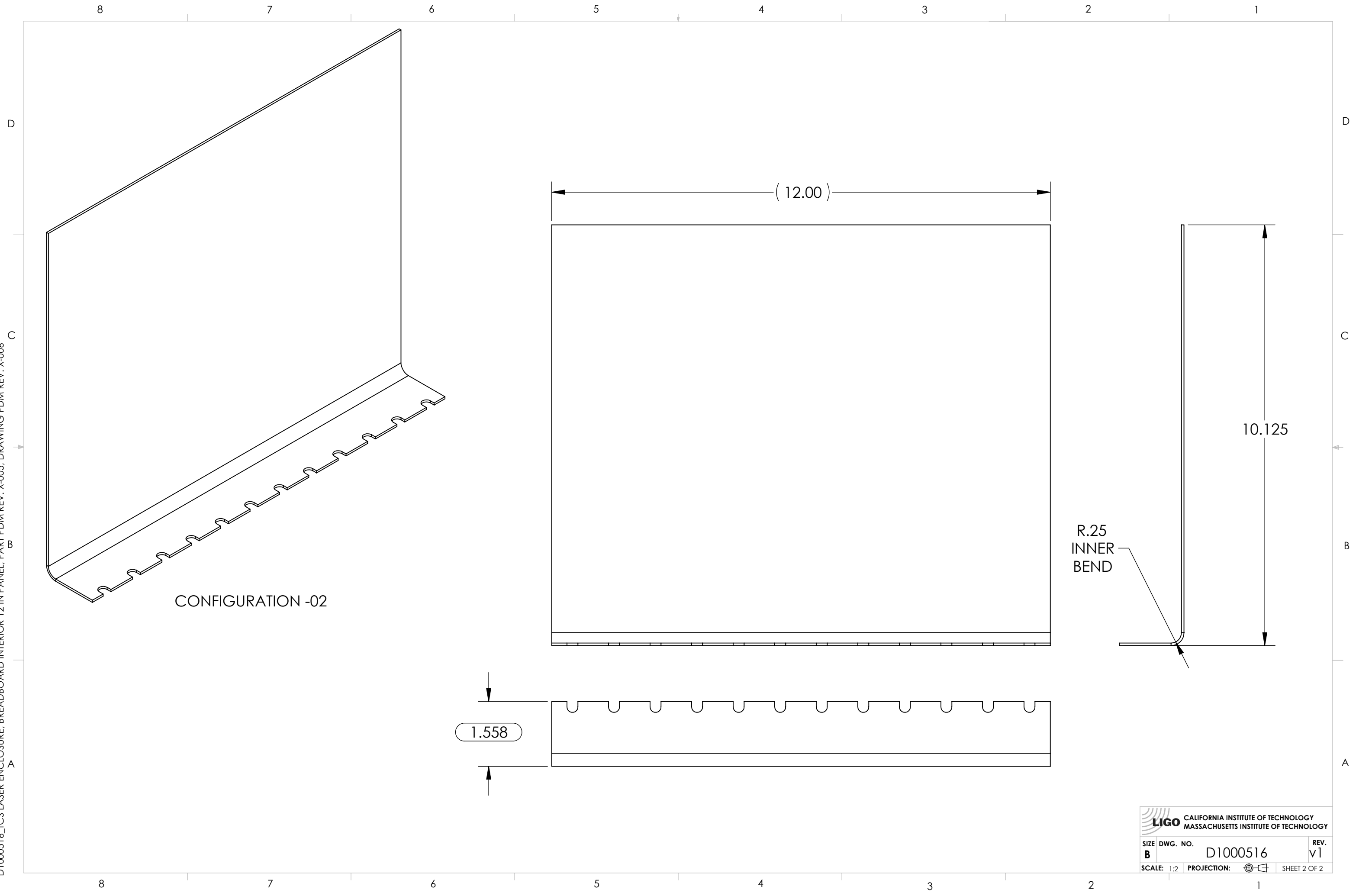
B


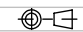
A

A

8 7 6 5 4 3 2 1

D1000516\_TCS LASER ENCLOSURE, BREADBOARD INTERIOR 12 IN PANEL, PART PDM REV: X-005, DRAWING PDM REV: X-006



 CALIFORNIA INSTITUTE OF TECHNOLOGY MASSACHUSETTS INSTITUTE OF TECHNOLOGY	
SIZE <b>B</b>	DWG. NO. D1000516
SCALE: 1:2	PROJECTION:  SHEET 2 OF 2
REV. v1	