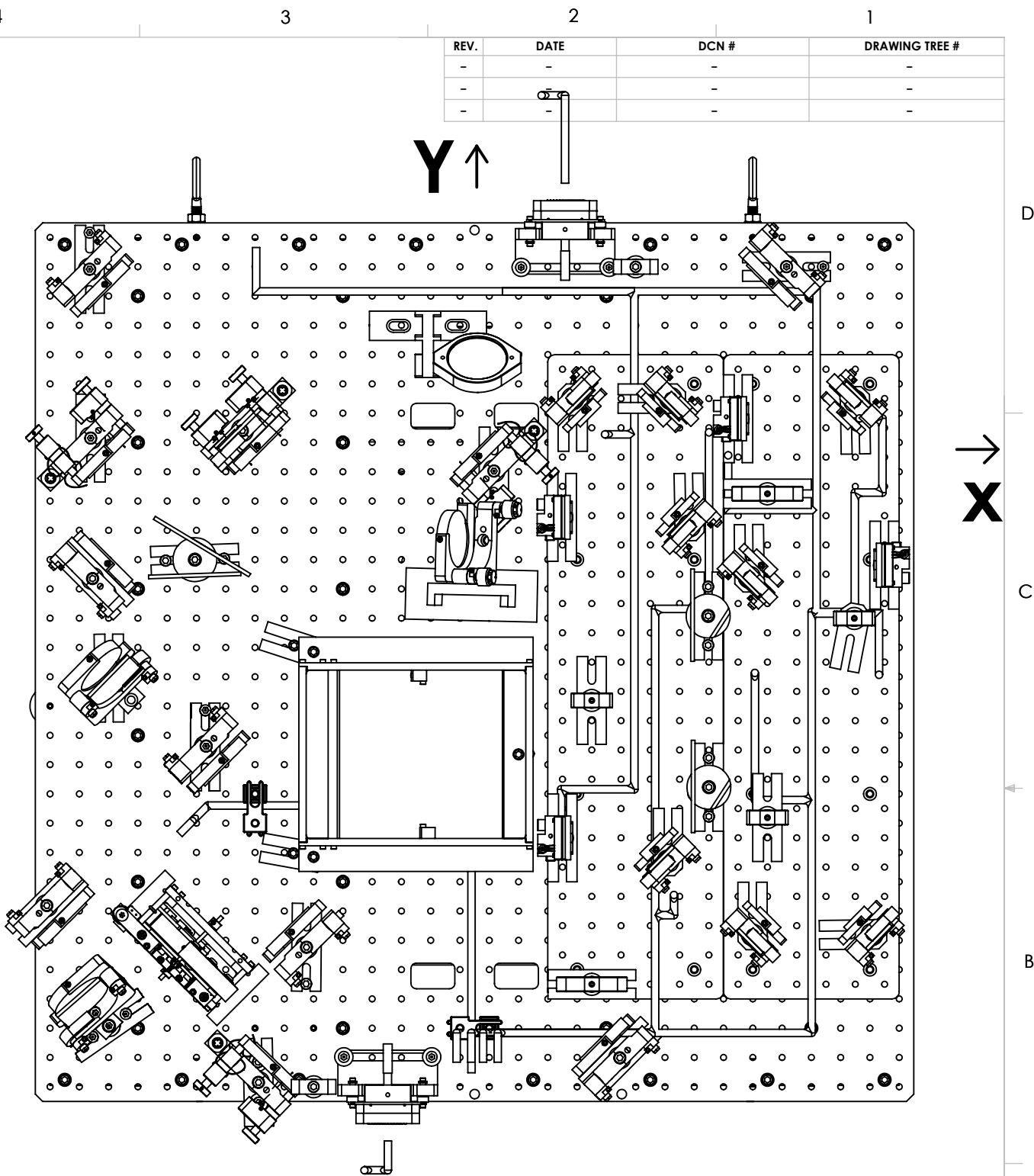
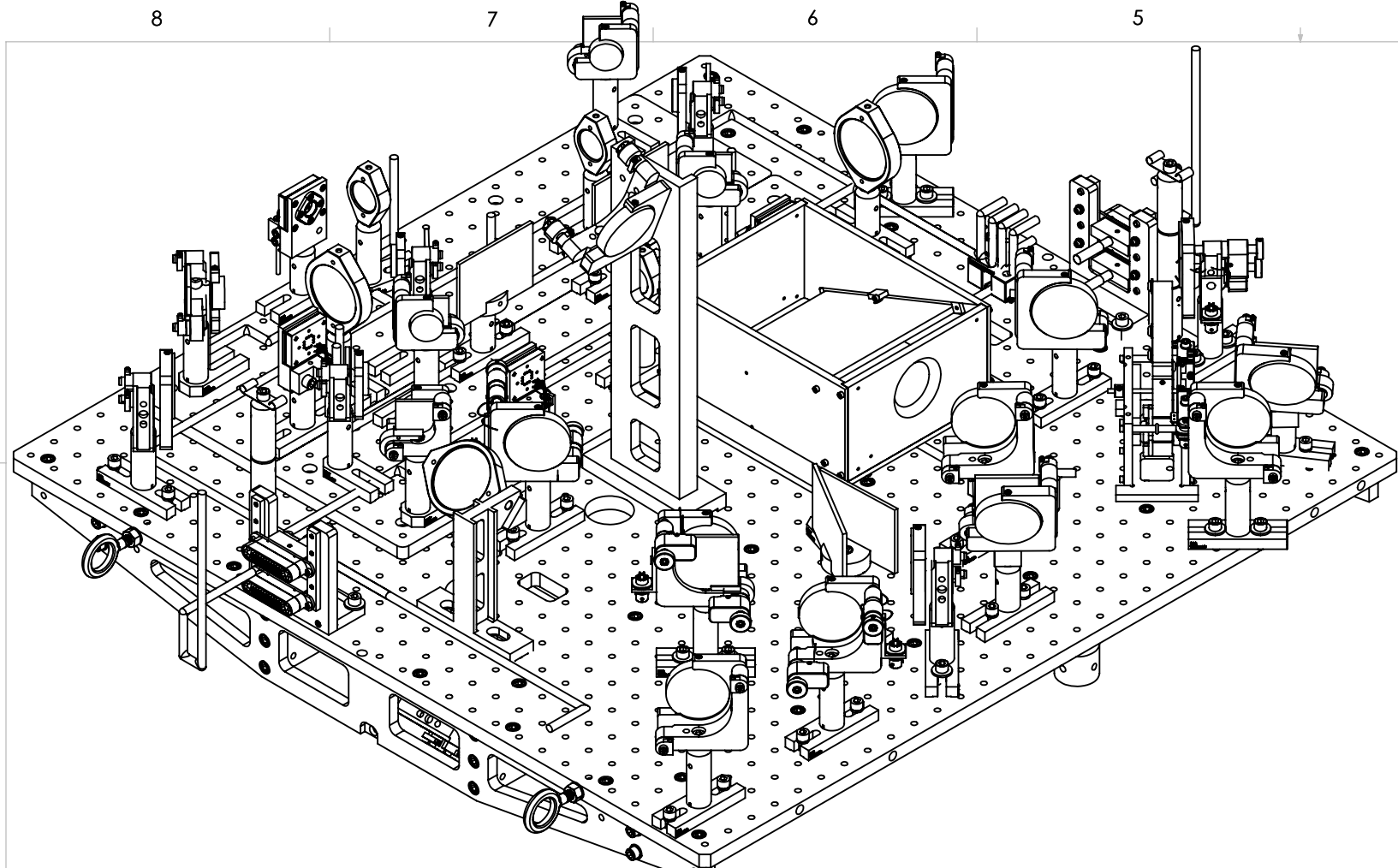


D1000484_ISC_TRANSMON_Assembly, PART PDM REV: X-128, DRAWING PDM REV: X-006



REV.	DATE	DCN #	DRAWING TREE #
-	-	-	-
-	-	-	-
-	-	-	-

23		TMS, AD-HOC CABLE MOUNT POST, First Article	N/A	2
22	D0900004	UHV COMPATIBLE CABLE CLAMP	PEEK	2
21	D0900004	2x UHV COMPATIBLE CABLE CLAMP	PEEK	3
20	D1300033	BRACKET, CABLE, TABLE, TMS, ISC, aLIGO	N/A	2
19	D1001160	aLIGO OPTICS TABLE SHRUCTRAL ASSEMBLY	N/A	1
18	D1001076	TRANSMON HIGH POWER BEAM DUMP	N/A	1
17	D1000971	TRANSMON BEAM DUMP - SMALL	-	1
16	D1200004	Green QPD SLED ASSEMBLY	N/A	1
15	D1200011	IR QPD SLED ASSEMBLY	N/A	1
14	D1001434	TMS, SISKIYOU MOUNT BRACKET, UPPER INBOARD	6061-T6 Al	1
13	IXM200.C2 (SISKIYOU)	2" 2-AXIS MIRROR MOUNT	6061-T6 Al	1
12	MI2045-1047 (PRECISION PHOTONICS)	MIRROR, 2" DIAMETER, 1047NM HR, 45 DEGREE POLARIZATION	TRANSPARENT GLASS	1
11	D1003295	ISC - TransMon Periscope Lens Assembly	N/A	1
10	D1100257	LH Compound Angled Mirror Mount, With Beam Dump	N/A	1
9	D1100642	ISC Rotary Beam Diverter	N/A	1
8	D1300231	2" MIRROR MOUNT RH	N/A	3
7	D1300231	2" MIRROR MOUNT RT, WITH PICO MOTORS	N/A	1
6	D1300231	2" MIRROR MOUNT RH, with Pico Motors & Beam Dump	N/A	1
5	D1101616	2" MIRROR MOUNT LH	N/A	3
4	D1101616	2" MIRROR MOUNT LH, With PICO Motors	N/A	2
3		Y-End First Article LHO, Periscope Half, Under Table	N/A	1
2		TRANSMON 2" MIRROR MOUNT LEFT HAND ASSEMBLY	N/A	1
1	D1100257	ISC TransMon Compound Angled Mirror Mount ASM	N/A	1
ITEM NO.	PART NUMBER	DESCRIPTION	MATERIAL	QTY
PARTS LIST				

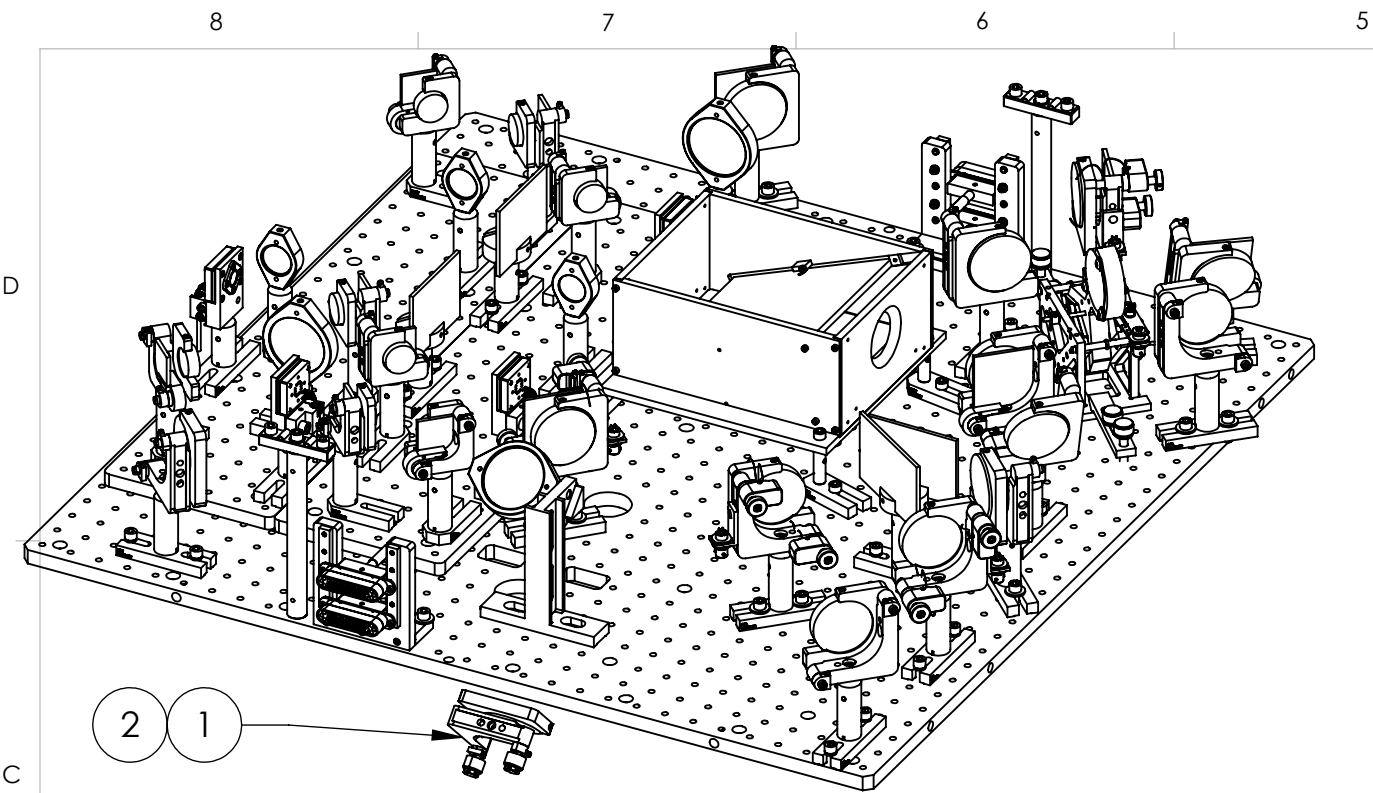
(FIRST ARTICLE, WBSC6)

NOTES AND TOLERANCES: (UNLESS OTHERWISE SPECIFIED)

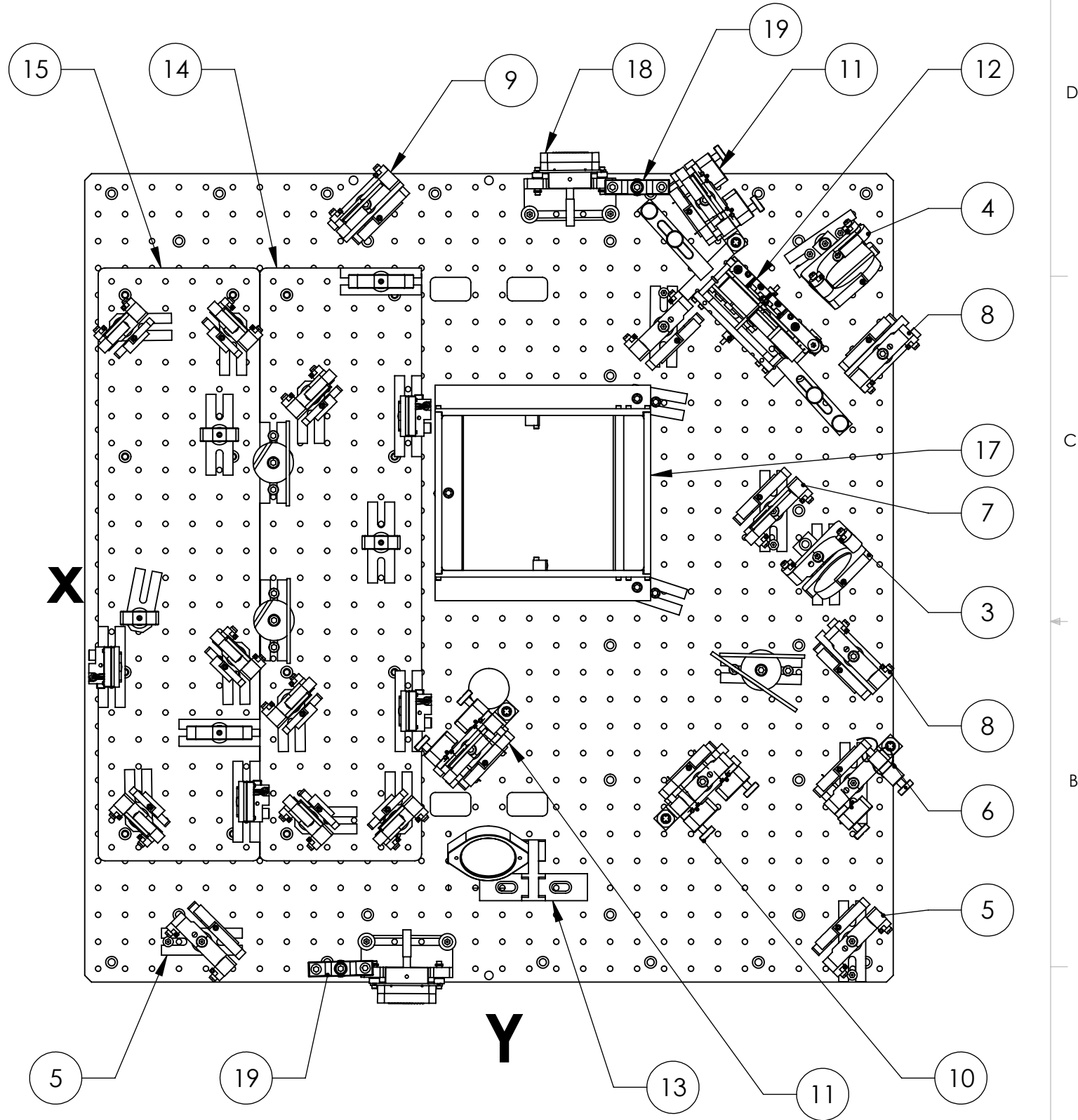
MATERIAL	FINISH
	N/A

CALIFORNIA INSTITUTE OF TECHNOLOGY MASSACHUSETTS INSTITUTE OF TECHNOLOGY		PART NAME	
SYSTEM ADVANCED LIGO		SUB-SYSTEM ISC	
DESIGNER	J. FISHER	SIZE	DWG. NO.
DRAFTER	SBARNUM	14 AUG 2013	B D1000484
CHECKER	LBARSOTTI	AUG 2013	
APPROVAL	PFRITSCHEL	AUG 2013	
SCALE: 1:5		PROJECTION:	REV. v11
		SHEET 1 OF 3	

D1000484_ISC_TRANSMON_Assembly, PART PDM REV: X-009, DRAWING PDM REV: X-006



See D1201458 for specific optic locations, post heights and mount specification.

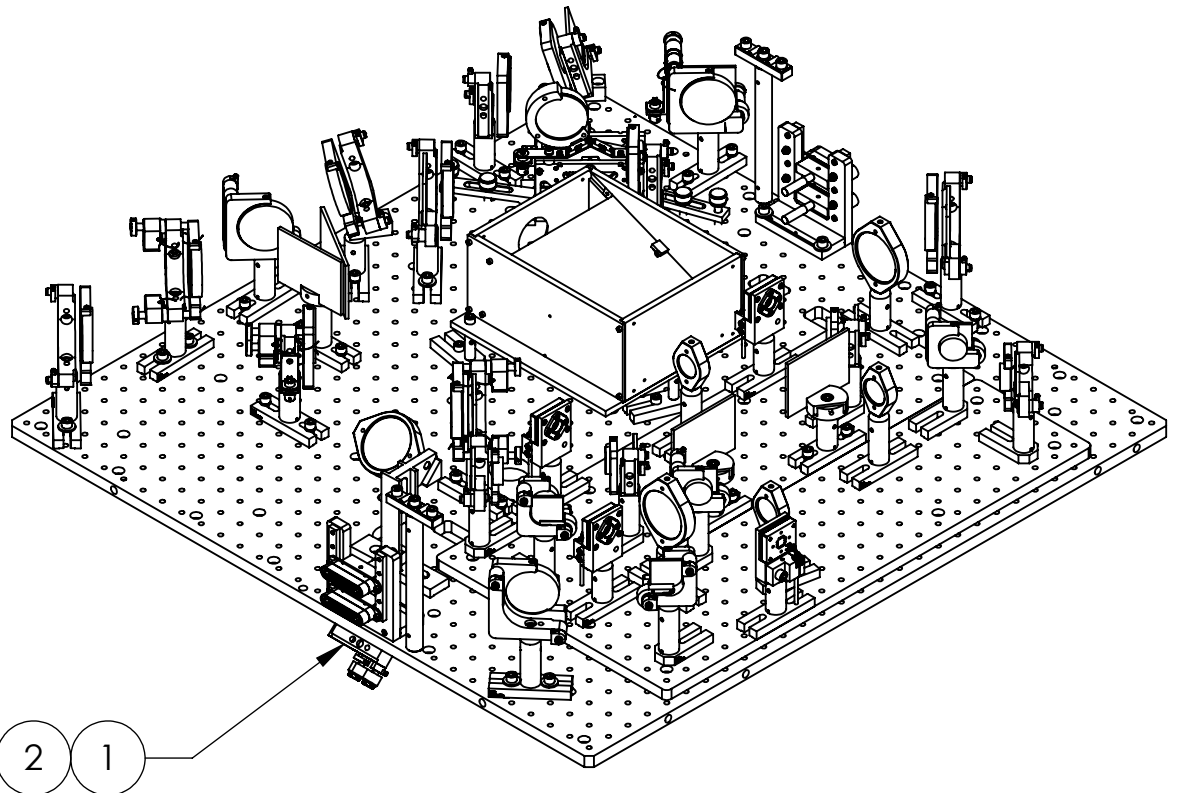


ITEM NO.	PART NUMBER	DESCRIPTION	MATERIAL	QTY
20	D1200384	Custom TC-3 Dog Clamp, ISC, aLIGO	N/A	2
19	D1300074	Cable Post Assembly, TMS, ISC, aLIGO	N/A	2
18	D1300033	BRACKET, CABLE, TABLE, TMS, ISC, aLIGO	N/A	2
17	D1001076	TRANSMON HIGH POWER BEAM DUMP	N/A	1
16	D1000971	TRANSMON BEAM DUMP - SMALL	--	1
15	D1200004	Green QPD SLED ASSEMBLY	N/A	1
14	D1200011	IR QPD SLED ASSEMBLY	N/A	1
13	D1003295	ISC - TransMon Periscope Lens Assembly	N/A	1
12	D1100642	ISC Rotary Beam Diverter	N/A	1
11	D1300231	2" MIRROR MOUNT RH, with Pico Motors & Beam Dump	N/A	2
10	D1300231	2" MIRROR MOUNT RH, WITH PICO MOTORS	N/A	1
9	D1300231	2" MIRROR MOUNT RT WITH BEAM DUMP	N/A	1
8	D1300231	2" MIRROR MOUNT RH	N/A	2
7	D1101616	2" MIRROR MOUNT LH, With BEAM DUMP	N/A	1
6	D1101616	2" MIRROR MOUNT LH, With PICO Motors	N/A	1
5	D1101616	2" MIRROR MOUNT LH	N/A	3
4	D1100257	LH Compound Angled Mirror Mount, With Beam Dump	N/A	1
3	D1100257	RH Compound Angled Mirror Mount	N/A	1
2	MIRROR	2" Mirror (under the table)	Glass	1
1	IXM200.C2 (SISKIYOU)	2" 2-AXIS MIRROR MOUNT	6061-T6 Al	1
PARTS LIST				

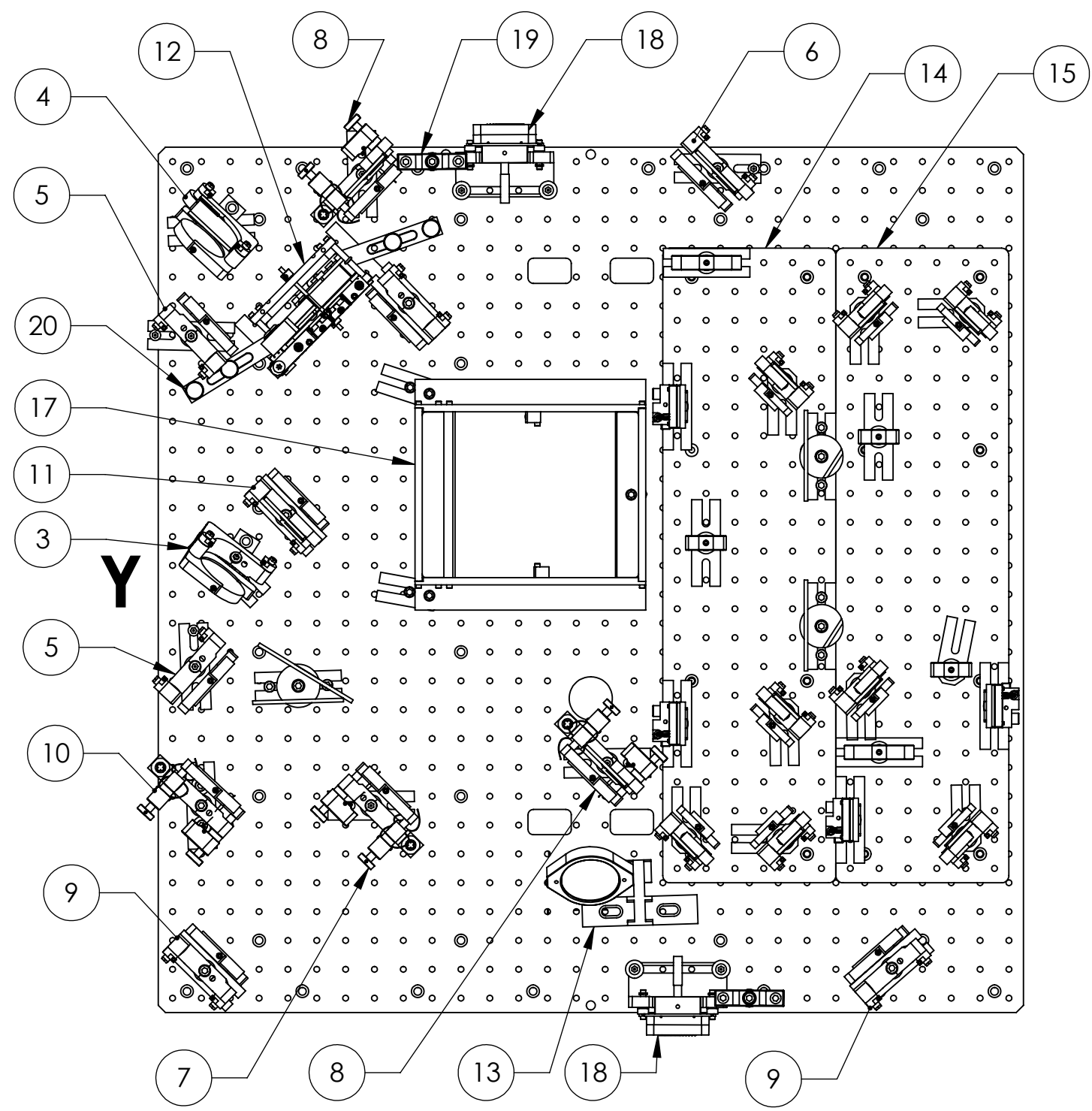
Y END, BSCs 10, 5

CALIFORNIA INSTITUTE OF TECHNOLOGY
 MASSACHUSETTS INSTITUTE OF TECHNOLOGY
 SIZE DWG. NO. **B** D1000484 REV. **v11**
 SCALE: 1:5 PROJECTION: SHEET 2 OF 3

D1000484_ISC_TRANSMON_Assembly_PART PDM REV: X-128, DRAWING PDM REV: X-006



See D1201457 for specific optic locations, post heights and mount specification.



ITEM NO.	PART NUMBER	DESCRIPTION	MATERIAL	QTY
20	D1200384	Custom TC-3 Dog Clamp, ISC, aLIGO	N/A	2
19	D1300074	Cable Post Assembly, TMS, ISC, aLIGO	N/A	2
18	D1300033	BRACKET, CABLE, TABLE, TMS, ISC, aLIGO	N/A	2
17	D1001076	TRANSMON HIGH POWER BEAM DUMP	N/A	1
16	D1000971	TRANSMON BEAM DUMP - SMALL	--	1
15	D1200004	Green QPD SLED ASSEMBLY	N/A	1
14	D1200011	IR QPD SLED ASSEMBLY	N/A	1
13	D1003295	ISC - TransMon Periscope Lens Assembly	N/A	1
12	D1100642	ISC Rotary Beam Diverter	N/A	1
11	D1300231	2" MIRROR MOUNT RT WITH BEAM DUMP	N/A	1
10	D1300231	2" MIRROR MOUNT RT, WITH PICO MOTORS	N/A	1
9	D1300231	2" MIRROR MOUNT RT	N/A	3
8	D1101616	2" MIRROR MOUNT LH, With PICO MOTORS & BEAM DUMP	N/A	2
7	D1101616	2" MIRROR MOUNT LH, With PICO Motors	N/A	1
6	D1101616	2" MIRROR MOUNT LH, With BEAM DUMP	N/A	1
5	D1101616	2" MIRROR MOUNT LH	N/A	2
4	D1100257	ISC TransMon Compound Angled Mirror Mount ASM	N/A	1
3	D1100257	LH Compound Angled Mirror Mount	N/A	1
2	MIRROR	2" Mirror (under the table)	Glass	1
1	IXM200.C2 (SISKIYOU)	2" 2-AXIS MIRROR MOUNT	6061-T6 Al	1
PARTS LIST				

X
X-END, BSCs 9, 4

CALIFORNIA INSTITUTE OF TECHNOLOGY
 MASSACHUSETTS INSTITUTE OF TECHNOLOGY
 SIZE DWG. NO. **B** D1000484 REV. **v11**
 SCALE: 1:5 PROJECTION: SHEET 3 OF 3