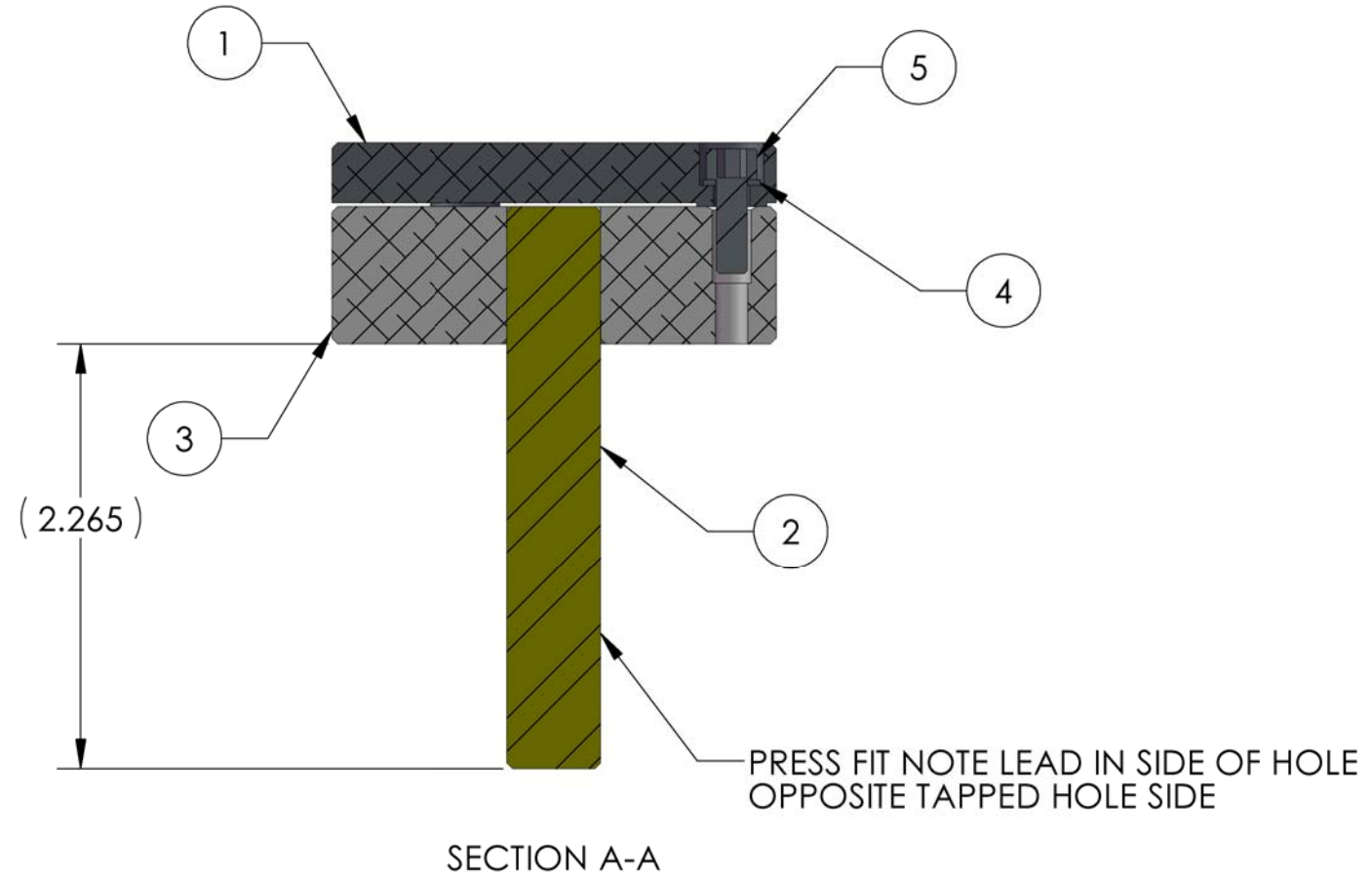
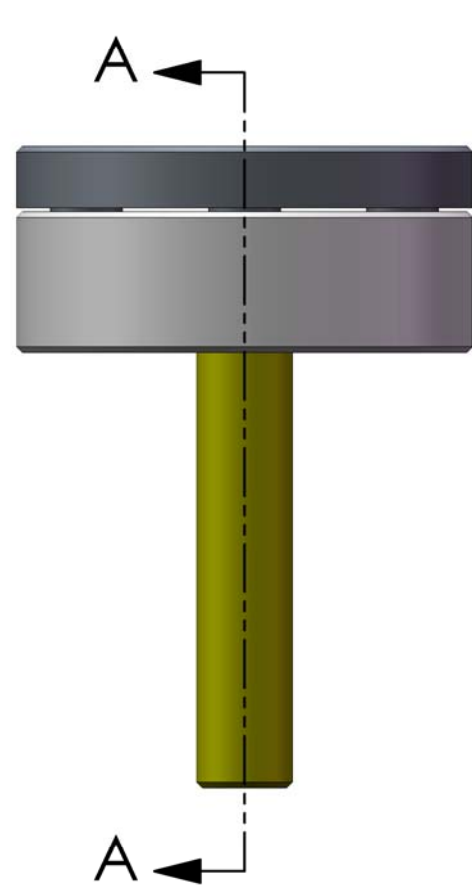


D1000468 POSITION SENSOR TARGET ASSEMBLY, aLIGO BSC ISI, PART PDM REV: X-046, DRAWING PDM REV: X-004

NOTES CONTINUED:
 5. VENDOR REFERENCES ARE PROVIDED AS EXAMPLES OF PARTS MEETING ALL REQUIRED SPECIFICATIONS. EQUIVALENTS ARE ALWAYS ACCEPTABLE UNLESS OTHERWISE SPECIFIED.
 6. REFER TO LIGO E0900357 FOR ASSEMBLY PROCEDURE.

REV.	DATE	DCN #	DRAWING TREE #
v1	01 Mar. 2010	E1000049	E1000025



5	HOLOKROME_78028	SHCS, #8-32x.50"	18-8 SS	3
4	UC_COMPONENTS_WFV-08	Washer Vented, .17 ID X .304 OD X .032 THK #8	18-8 SS	3
3	D1000472	POSITION SENSOR TARGET BODY, aLIGO BSC ISI	6061-T6 Al	1
2	McMASTER_90145A725	DOWEL PIN .5000_ .5002 OD X 3"LG	18-8 SSSL	1
1	D1000470	POSITION SENSOR TARGET, aLIGO BSC ISI	1100-H14	1
ITEM NO.	PART NUMBER	DESCRIPTION	MATERIAL	REQ

DIMENSIONS ARE IN INCHES		NOTES AND TOLERANCES: (UNLESS OTHERWISE SPECIFIED)		LIGO CALIFORNIA INSTITUTE OF TECHNOLOGY MASSACHUSETTS INSTITUTE OF TECHNOLOGY		PART NAME	
TOLERANCES: .XX ± N/A .XXX ± N/A ANGULAR ± N/A *		1. INTERPRET DRAWING PER ASME Y14.5-1994. 2. REMOVE ALL SHARP EDGES, R.02 MIN. 3. DO NOT SCALE FROM DRAWING. 4. ALL MACHINING FLUIDS MUST BE FULLY SYNTHETIC, FULLY WATER SOLUBLE AND FREE OF SULFUR, SILICONE, AND CHLORINE.		SYSTEM ADVANCED LIGO		SUB-SYSTEM SEI	
MATERIAL SEE BOM		FINISH N/A μinch		NEXT ASSY D1000478		DESIGNER S.BARNUM 01 Mar. 2010	
						DRAFTER M.HILLARD 01 Mar. 2010	
						CHECKER F.MATICHARD 01 Mar. 2010	
						APPROVAL K.MASON 01 Mar. 2010	
						SIZE DWG. NO. B D1000468	
						REV. v1	
						SCALE: 1:1 PROJECTION: SHEET 1 OF 1	