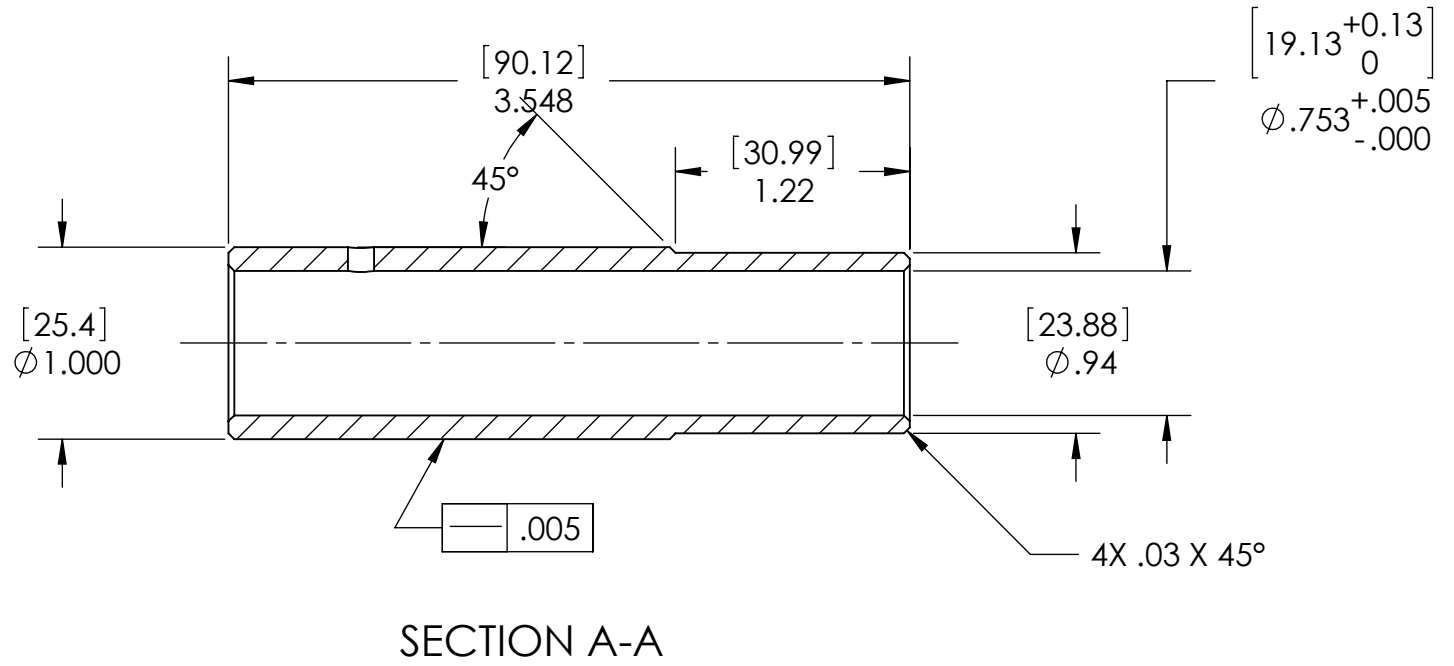
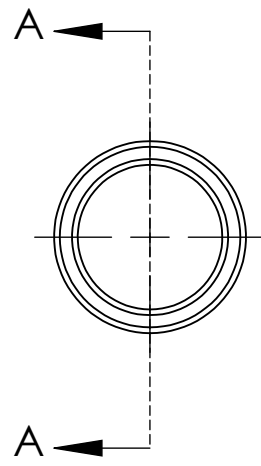
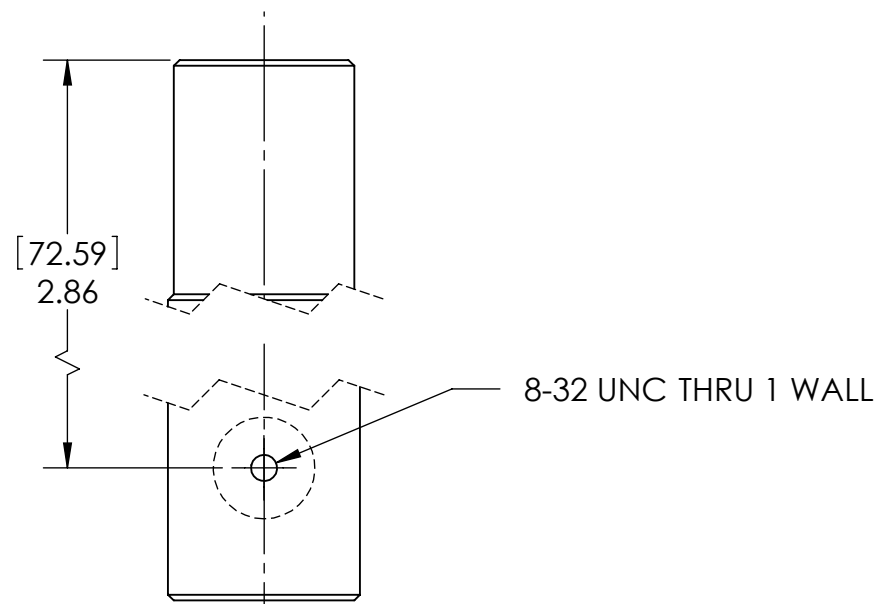


D1000348 LOCATING SLEEVE, R OPTIC INSPECTION FIXTURE, COC CONTAINER, ADVANCED LIGO, PART PDM REV: X-000, DRAWING PDM REV: X-001

8 7 6 5 4 3 2 1

NOTES CONTINUED:
⑤ SCRIBE, ENGRAVE, OR MECHANICALLY STAMP (NO DYES OR INKS) A UNIQUE THREE DIGIT SERIAL NUMBER & REVISION NUMBER ON EACH PART. SERIAL NUMBERS START AT 001 FOR THE FIRST ARTICLE AND PROCEED CONSECUTIVELY. BAG AND TAG PARTS WITH THEIR DRAWING PART NUMBER, REVISION, VARIANT OR "TYPE" (IF APPLICABLE), AND QUANTITY. IF PARTS ARE TOO SMALL TO SCRIBE, BAGGING AND TAGGING ALONE IS SUFFICIENT.
EXAMPLE (PART): 001-v1
EXAMPLE (TAG): DXXXXXX-VY, TYPE-XX, QTY: TBD

REV.	DATE	DCN #	DRAWING TREE #
V1	17 JUN 2010		



DIMENSIONS ARE IN INCHES [MM]		NOTES AND TOLERANCES: (UNLESS OTHERWISE SPECIFIED)		LIGO CALIFORNIA INSTITUTE OF TECHNOLOGY MASSACHUSETTS INSTITUTE OF TECHNOLOGY		PART NAME	
TOLERANCES: .XX ± .01 .XXX ± .005 ANGULAR ± 0.5°		1. INTERPRET DRAWING PER ASME Y14.5-1994. 2. REMOVE ALL SHARP EDGES, R.02 MIN. 3. DO NOT SCALE FROM DRAWING. 4. ALL MACHINING FLUIDS MUST BE FULLY SYNTHETIC, FULLY WATER SOLUBLE AND FREE OF SULFUR, SILICONE, AND CHLORINE.		ADVANCED LIGO		LOCATING SLEEVE, R OPTIC INSPECTION FIXTURE	
MATERIAL PFA440 HP (PRESHRUNK)		FINISH N/A μinch		SUB-SYSTEM COC		DESIGNER K. BUCKLAND	
				NEXT ASSY		DRAFTER K. BUCKLAND	
						CHECKER	
						APPROVAL	
						SCALE: 1:1 PROJECTION:	
						SHEET 1 OF 1	

8 7 6 5 4 3 2 1