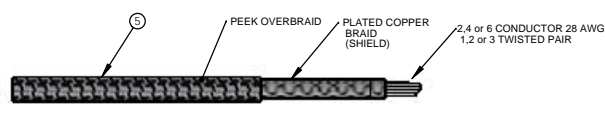
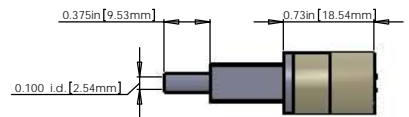
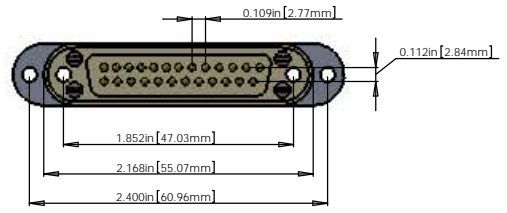
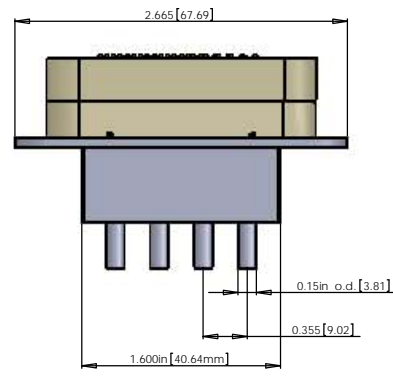
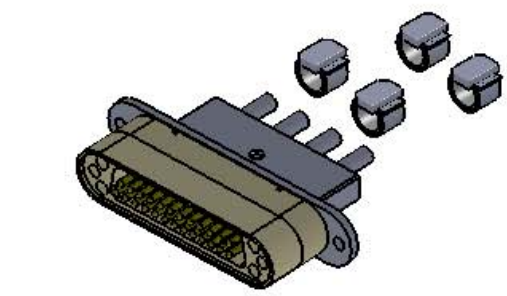


REV.	DATE	DCN #	DRAWING TREE #

NOTES CONTINUED:
 ① SCRIBE, ENGRAVE, OR MECHANICALLY STAMP TWO INKS OR DYES DRAWING PART NUMBER AND REVISION ON NOTED SURFACE FOLLOWED ON THE NEXT LINE BY A THREE DIGIT SERIAL NUMBER. SERIAL NUMBERS START AT 001 FOR THE FIRST ARTICLE AND PROCEED CONSECUTIVELY. USE OF HIGH CHARACTERS. EXAMPLE: DXXXXXXV, SVN001. A VIBRATORY TOOL MAY BE USED.

V25R CABLE ASSEMBLY CIRCUIT SUMMARY V-DB25 M/1-60-4 μD9 F/5

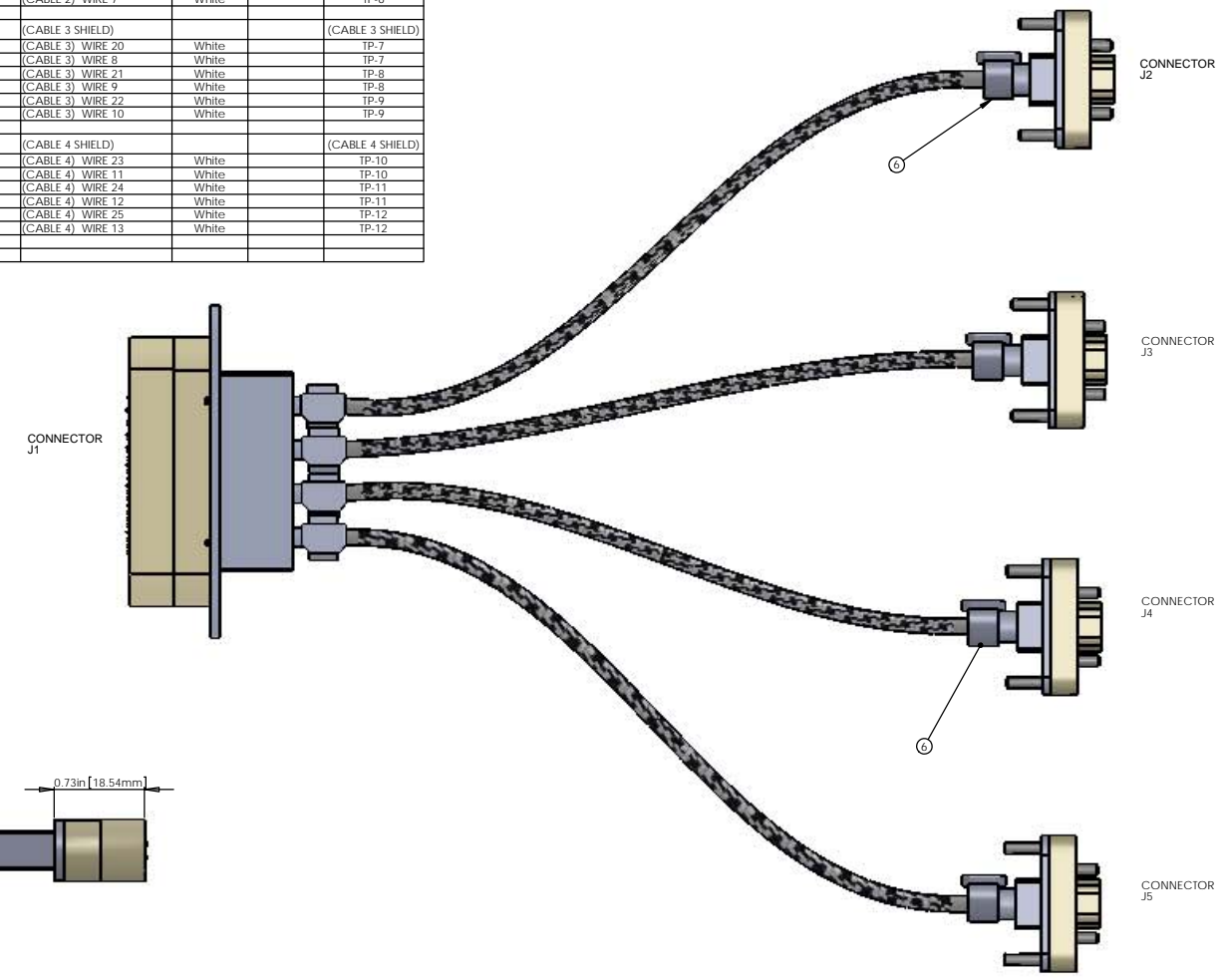
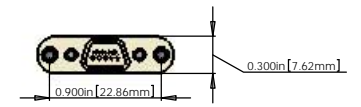
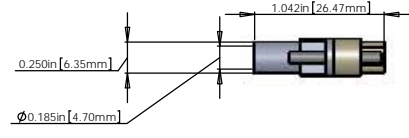
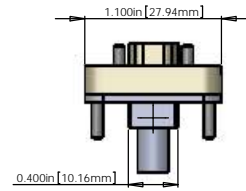
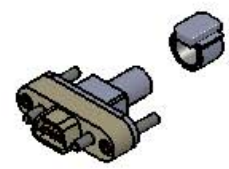
FROM				
CONNECTOR J1 - 25 PIN MALE SUBMINI_D CONNECTOR (PEEK)				
PIN	WIRE NAME	COLOR	LENGTH	TWISTED PAIR
1	(CABLE 1) SHIELD			(CABLE 1) SHIELD
1	(CABLE 1) WIRE 1	White		SINGLE WIRE
14	(CABLE 1) WIRE 14	White		TP-1
2	(CABLE 1) WIRE 2	White		TP-1
15	(CABLE 1) WIRE 15	White		TP-2
3	(CABLE 1) WIRE 3	White		TP-2
16	(CABLE 1) WIRE 16	White		TP-3
4	(CABLE 1) WIRE 4	White		TP-3
1	(CABLE 2) SHIELD			(CABLE 2) SHIELD
17	(CABLE 2) WIRE 17	White		TP-4
5	(CABLE 2) WIRE 5	White		TP-4
18	(CABLE 2) WIRE 18	White		TP-5
6	(CABLE 2) WIRE 6	White		TP-5
19	(CABLE 2) WIRE 19	White		TP-6
7	(CABLE 2) WIRE 7	White		TP-6
1	(CABLE 3) SHIELD			(CABLE 3) SHIELD
20	(CABLE 3) WIRE 20	White		TP-7
8	(CABLE 3) WIRE 8	White		TP-7
21	(CABLE 3) WIRE 21	White		TP-8
9	(CABLE 3) WIRE 9	White		TP-8
22	(CABLE 3) WIRE 22	White		TP-9
10	(CABLE 3) WIRE 10	White		TP-9
1	(CABLE 4) SHIELD			(CABLE 4) SHIELD
23	(CABLE 4) WIRE 23	White		TP-10
11	(CABLE 4) WIRE 11	White		TP-10
24	(CABLE 4) WIRE 24	White		TP-11
12	(CABLE 4) WIRE 12	White		TP-11
25	(CABLE 4) WIRE 25	White		TP-12
13	(CABLE 4) WIRE 13	White		TP-12



ITEM NO.	PART NUMBER	DESCRIPTION	QTY.	LENGTH
①	CUSTOM DB25 MALE	DB25 MALE CONNECTOR (J1) FOR UHV (PEEK)	1	
②	CUSTOM BACKSHELL	DB25 CONNECTOR BACKSHELL FOR UHV (STAINLESS)	1	
③	CUSTOM DB9 FEMALE	DB9 FEMALE CONNECTOR (J2, J3, J4, J5) FOR UHV (PEEK)	4	
④	CUSTOM BACKSHELL	DB9 CONNECTOR BACKSHELL FOR UHV (STAINLESS)	4	
⑤	C1	9 COND. (1,2 or 3 TW PAIR) SHIELD/CABLE WITH COPPER BRAID (SHIELD) AND PEEK OVERBRAID	4	60"
⑥	GLENAIR 600-052	GLENAIR 600-052 STANDARD BRAID CLAMP	8	

NOTES: (UNLESS OTHERWISE SPECIFIED)

- MATERIAL:
 - a. CONNECTOR SHELL - PEEK
 - b. BACKSHELL - STAINLESS STEEL WITH VENT HOLE.
 - c. CONTACTS - BERYLLIUM COPPER ALLOW C17300 0.00050 MIN. GOLD OVER NICKEL
 - d. HARDWARE: CORROSION RESISTANCE STEEL, PASSIVATED
 - e. PEEK BRAID - PEEK CARBON FIBRE LOADED
- CABLE 2,4 or 6 COND. 28 AWG, (40 STRD 44 AWG) WITH 2 LAYERS OF KAPTON TAPE 1,2 or 3 TWISTED PAIRS (4 TO 5 TWISTS PER INCH) OVERALL 40AWG SILVER PLATED COPPER BRAID 90% COVERAGE OVERALL PEEK BRAID MIN. 50% COVERAGE OVERALL CABLE O.D. WILL BE APPROX. 0.240 IN.



V25R CABLE ASSEMBLY CIRCUIT SUMMARY

TO		
CONNECTOR J2 - 9 PIN FEMALE MICRO_D CONNECTOR (PEEK)		
Pin	Wire Name	SIGNAL
5	(CABLE 1) SHIELD	SHIELD
5	(CABLE 1) WIRE 1	SHIELD
1	(CABLE 1) WIRE 14	PD-K
6	(CABLE 1) WIRE 2	PD-A
2	(CABLE 1) WIRE 15	LED-A
7	(CABLE 1) WIRE 3	LED-K
4	(CABLE 1) WIRE 16	FN COIL
9	(CABLE 1) WIRE 4	ST COIL

V25R CABLE ASSEMBLY CIRCUIT SUMMARY

TO		
CONNECTOR J3 - 9 PIN FEMALE MICRO_D CONNECTOR (PEEK)		
Pin	Wire Name	SIGNAL
5	(CABLE 2) SHIELD	SHIELD
5	(CABLE 2) WIRE 1	SHIELD
1	(CABLE 2) WIRE 17	PD-K
6	(CABLE 2) WIRE 5	PD-A
2	(CABLE 2) WIRE 18	LED-A
7	(CABLE 2) WIRE 6	LED-K
4	(CABLE 2) WIRE 19	FN COIL
9	(CABLE 2) WIRE 7	ST COIL

V25R CABLE ASSEMBLY CIRCUIT SUMMARY

TO		
CONNECTOR J4 - 9 PIN FEMALE MICRO_D CONNECTOR (PEEK)		
Pin	Wire Name	SIGNAL
5	(CABLE 3) SHIELD	SHIELD
5	(CABLE 3) WIRE 1	SHIELD
1	(CABLE 3) WIRE 20	PD-K
6	(CABLE 3) WIRE 8	PD-A
2	(CABLE 3) WIRE 21	LED-A
7	(CABLE 3) WIRE 9	LED-K
4	(CABLE 3) WIRE 22	FN COIL
9	(CABLE 3) WIRE 10	ST COIL

V25R CABLE ASSEMBLY CIRCUIT SUMMARY

TO		
CONNECTOR J5 - 9 PIN FEMALE MICRO_D CONNECTOR (PEEK)		
Pin	Wire Name	SIGNAL
5	(CABLE 4) SHIELD	SHIELD
5	(CABLE 4) WIRE 1	SHIELD
1	(CABLE 4) WIRE 23	PD-K
6	(CABLE 4) WIRE 11	PD-A
2	(CABLE 4) WIRE 24	LED-A
7	(CABLE 4) WIRE 12	LED-K
4	(CABLE 4) WIRE 25	FN COIL
9	(CABLE 4) WIRE 13	ST COIL

STANDARD USE FOR THIS CABLE		
SUBSYSTEM	AIR/VAC	STANDARD USE
SUS	IN-VAC	MC1, MC2

NOTES AND TOLERANCES (UNLESS OTHERWISE SPECIFIED)		CALIFORNIA INSTITUTE OF TECHNOLOGY MASSACHUSETTS INSTITUTE OF TECHNOLOGY		PART NAME CUSTOM CABLE SPECIFICATION V25R	
1. INTERPRET DRAWING PER ASME Y14.5-1994. 2. REMOVE ALL SHARP EDGES: R.02 MIN. 3. DO NOT SCALE FROM DRAWING. 4. ALL MACHINING FLUIDS MUST BE FULLY SYNTHETIC, FULLY WATER SOLUBLE AND FREE OF SULFUR, SILICONE, AND CHLORINE.		DESIGNER	DATE	DWG. NO.	REV.
TOLERANCES: XXX ± XXX ±	ANGULAR ±	DRAFTER	DATE	D1000230-v1	
MATERIAL	FINISH	CHECKER	DATE	SCALE: 2:1	PROJECTION:
Material <not specified>	μinch	APPROVAL			SHEET 1 OF 1