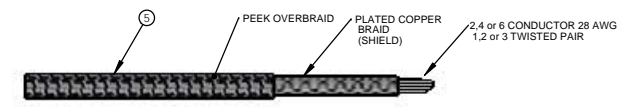
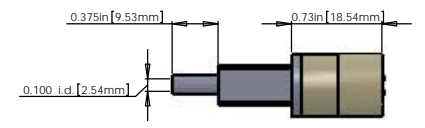
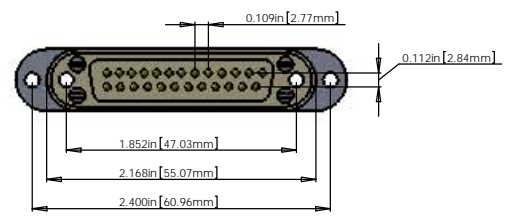
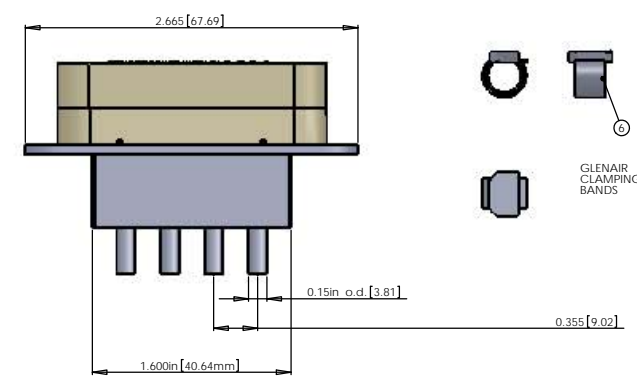
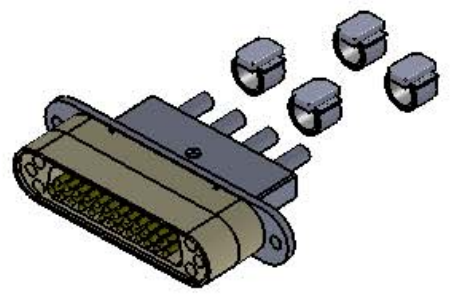
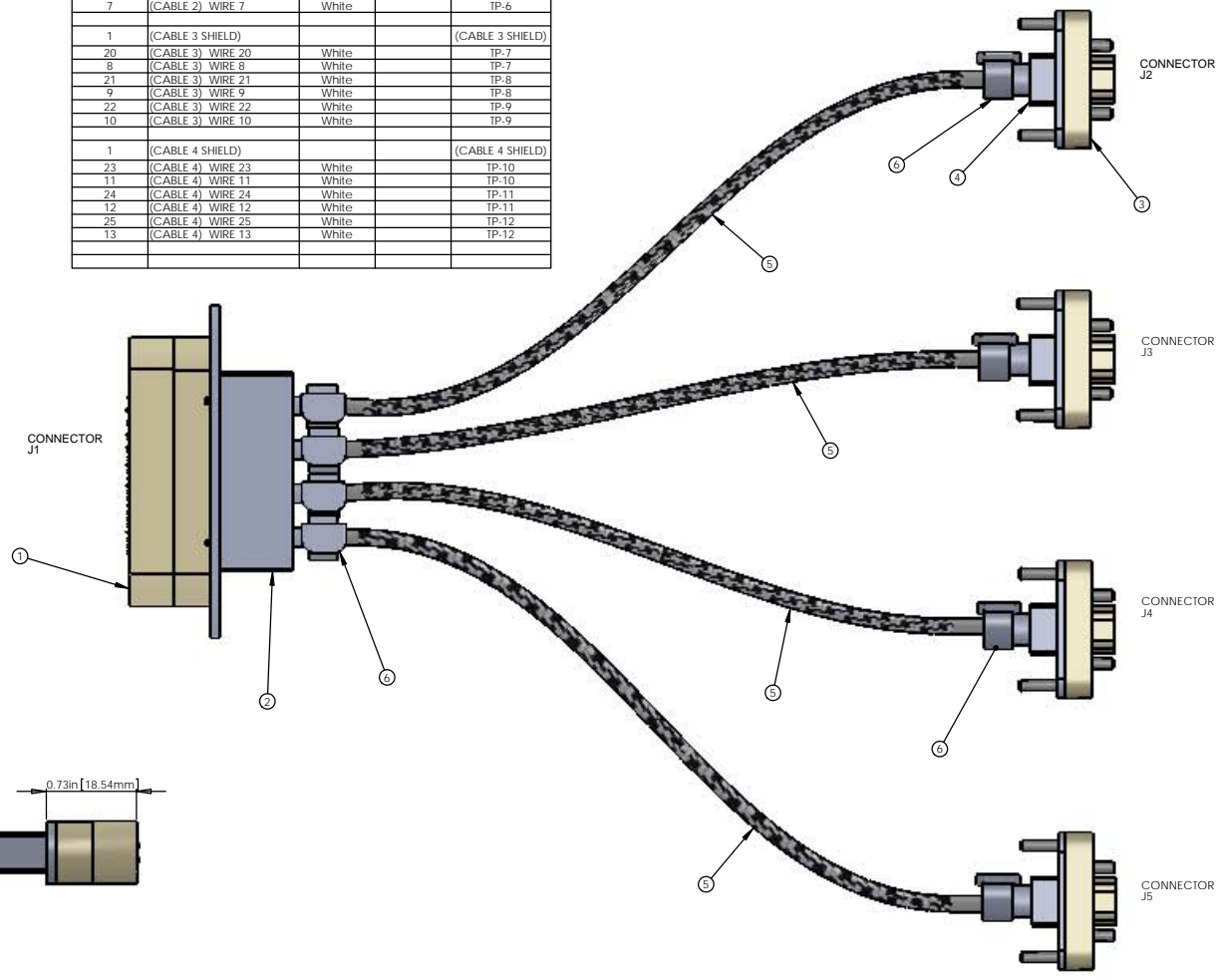


REV.	DATE	DCN #	DRAWING TREE #

NOTES CONTINUED:  
 ○ SCRIBE, ENGRAVE, OR MECHANICALLY STAMP TWO INVS OR DYES DRAWING PART NUMBER AND REVISION ON NOTED SURFACE FOLLOWED ON THE NEXT LINE BY A THREE DIGIT SERIAL NUMBER. SERIAL NUMBERS START AT 001 FOR THE FIRST ARTICLE AND PROCEED CONSECUTIVELY. USE 07 HIGH CHARACTERS. EXAMPLE: D000000V, S01001. A VIBRATORY TOOL MAY BE USED.



V25P CABLE ASSEMBLY CIRCUIT SUMMARY				
V-DB25 M/1-60-4 μD9 F/5				
FROM				
CONNECTOR J1 - 25 PIN MALE SUBMINI_D CONNECTOR (PEEK)				
PIN	WIRE NAME	COLOR	LENGTH	TWISTED PAIR
1	(CABLE 1) SHIELD			(CABLE 1) SHIELD
1	(CABLE 1) WIRE 1	White		SINGLE WIRE
14	(CABLE 1) WIRE 14	White		TP-1
2	(CABLE 1) WIRE 2	White		TP-1
15	(CABLE 1) WIRE 15	White		TP-2
3	(CABLE 1) WIRE 3	White		TP-2
16	(CABLE 1) WIRE 16	White		TP-3
4	(CABLE 1) WIRE 4	White		TP-3
1	(CABLE 2) SHIELD			(CABLE 2) SHIELD
17	(CABLE 2) WIRE 17	White		TP-4
5	(CABLE 2) WIRE 5	White		TP-4
18	(CABLE 2) WIRE 18	White		TP-5
6	(CABLE 2) WIRE 6	White		TP-5
19	(CABLE 2) WIRE 19	White		TP-6
7	(CABLE 2) WIRE 7	White		TP-6
1	(CABLE 3) SHIELD			(CABLE 3) SHIELD
20	(CABLE 3) WIRE 20	White		TP-7
8	(CABLE 3) WIRE 8	White		TP-7
21	(CABLE 3) WIRE 21	White		TP-8
9	(CABLE 3) WIRE 9	White		TP-8
22	(CABLE 3) WIRE 22	White		TP-9
10	(CABLE 3) WIRE 10	White		TP-9
1	(CABLE 4) SHIELD			(CABLE 4) SHIELD
23	(CABLE 4) WIRE 23	White		TP-10
11	(CABLE 4) WIRE 11	White		TP-10
24	(CABLE 4) WIRE 24	White		TP-11
12	(CABLE 4) WIRE 12	White		TP-11
25	(CABLE 4) WIRE 25	White		TP-12
13	(CABLE 4) WIRE 13	White		TP-12



V25P CABLE ASSEMBLY CIRCUIT SUMMARY		
TO		
CONNECTOR J2 - 9 PIN FEMALE MICRO_D CONNECTOR (PEEK)		
Pin	Wire Name	SIGNAL
5	(CABLE 1) SHIELD	SHIELD
1	(CABLE 1) WIRE 14	PD-K
6	(CABLE 1) WIRE 2	PD-A
2	(CABLE 1) WIRE 15	LED-A
7	(CABLE 1) WIRE 3	LED-K
4	(CABLE 1) WIRE 16	FN COIL
9	(CABLE 1) WIRE 4	ST COIL

V25P CABLE ASSEMBLY CIRCUIT SUMMARY		
TO		
CONNECTOR J3 - 9 PIN FEMALE MICRO_D CONNECTOR (PEEK)		
Pin	Wire Name	SIGNAL
5	(CABLE 2) SHIELD	SHIELD
5	(CABLE 2) WIRE 17	SHIELD
1	(CABLE 2) WIRE 17	PD-K
6	(CABLE 2) WIRE 5	PD-A
2	(CABLE 2) WIRE 18	LED-A
7	(CABLE 2) WIRE 6	LED-K
4	(CABLE 2) WIRE 19	FN COIL
9	(CABLE 2) WIRE 7	ST COIL

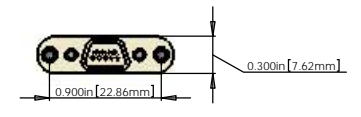
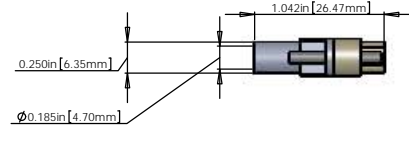
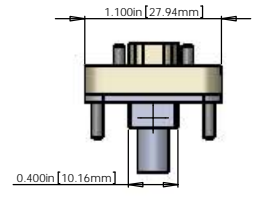
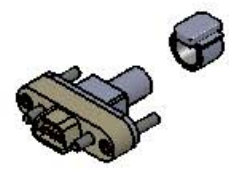
V25P CABLE ASSEMBLY CIRCUIT SUMMARY		
TO		
CONNECTOR J4 - 9 PIN FEMALE MICRO_D CONNECTOR (PEEK)		
Pin	Wire Name	SIGNAL
5	(CABLE 3) SHIELD	SHIELD
5	(CABLE 3) WIRE 1	SHIELD
1	(CABLE 3) WIRE 20	PD-K
6	(CABLE 3) WIRE 8	PD-A
2	(CABLE 3) WIRE 21	LED-A
7	(CABLE 3) WIRE 9	LED-K
4	(CABLE 3) WIRE 22	FN COIL
9	(CABLE 3) WIRE 10	ST COIL

V25P CABLE ASSEMBLY CIRCUIT SUMMARY		
TO		
CONNECTOR J5 - 9 PIN FEMALE MICRO_D CONNECTOR (PEEK)		
Pin	Wire Name	SIGNAL
5	(CABLE 4) SHIELD	SHIELD
5	(CABLE 4) WIRE 1	SHIELD
1	(CABLE 4) WIRE 23	PD-K
6	(CABLE 4) WIRE 11	PD-A
2	(CABLE 4) WIRE 24	LED-A
7	(CABLE 4) WIRE 12	LED-K
4	(CABLE 4) WIRE 25	FN COIL
9	(CABLE 4) WIRE 13	ST COIL

BILL OF MATERIALS				
ITEM NO.	PART NUMBER	DESCRIPTION	QTY.	LENGTH
1	CUSTOM DB25 MALE	DB25 MALE CONNECTOR (J1) FOR UHV (PEEK)	1	
2	CUSTOM BACKSHELL	DB25 CONNECTOR BACKSHELL FOR UHV (STAINLESS)	1	
3	CUSTOM BACKSHELL	DB9 FEMALE CONNECTOR (J2,J3,J4,J5) FOR UHV (PEEK)	4	
4	CUSTOM BACKSHELL	DB9 CONNECTOR BACKSHELL FOR UHV (STAINLESS)	4	
5		9 COND. (4 TW PAIR - SHIELD) CABLE WITH COPPER BRAID (SHIELD) AND PEEK OVERBRAID	4	
6	GLENAIR 600-052	GLENAIR 600-052 STANDARD BRAID CLAMP	8	

NOTES: ( UNLESS OTHERWISE SPECIFIED )

- MATERIAL:
  - CONNECTOR SHELL - PEEK
  - BACKSHELL - STAINLESS STEEL WITH VENT HOLE
  - CONTACTS - BERYLLIUM COPPER ALLOW C17300 0.00050 MIN. GOLD OVER NICKEL
  - HARDWARE - CORROSION RESISTANCE STEEL, PASSIVATED
  - PEEK BRAID - PEEK CARBON FIBRE LOADED
- CABLE 2, 4 or 6 COND. 28 AWG, (40 STRD 44 AWG) WITH 2 LAYERS OF KAPTON TAPE 1, 2 or 3 TWISTED PAIRS (4 TO 5 TWISTS PER INCH)  
 OVERALL 40AWG SILVER PLATED COPPER BRAID 90% COVERAGE  
 OVERALL PEEK BRAID MIN. 50% COVERAGE  
 OVERALL CABLE O.D. WILL BE APPROX. 0.240 IN.



NOTES AND TOLERANCES: (UNLESS OTHERWISE SPECIFIED)

- INTERPRET DRAWING PER ASME Y14.5-1994.
- REMOVE ALL SHARP EDGES: R.02 MIN.
- DO NOT SCALE FROM DRAWING.
- ALL MACHINING FLUIDS MUST BE FULLY SYNTHETIC, FULLY WATER SOLUBLE AND FREE OF SULFUR, SILICONE, AND CHLORINE.

DIMENSIONS ARE IN: TOLERANCES: .XX ±, .XXX ±, ANGULAR: ±

MATERIAL	Material <not specified>	FINISH	μinch
NEXT ASSY			

CALIFORNIA INSTITUTE OF TECHNOLOGY  
 MASSACHUSETTS INSTITUTE OF TECHNOLOGY

DESIGNER	E880288	DATE	08/02/2018
DRAWN			
CHECKER			
APPROVAL			

PART NAME: CUSTOM CABLE SPECIFICATION V25P  
 SUB-SYSTEM: SUS  
 SITE: E  
 DWG. NO.: D1000229-v1  
 SCALE: 2:1  
 PROJECTION: 1st Angle  
 SHEET 1 OF 1